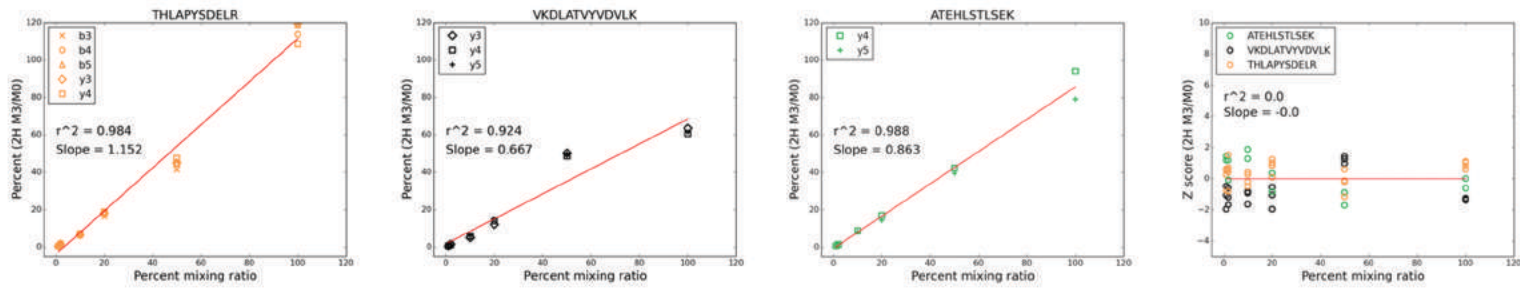
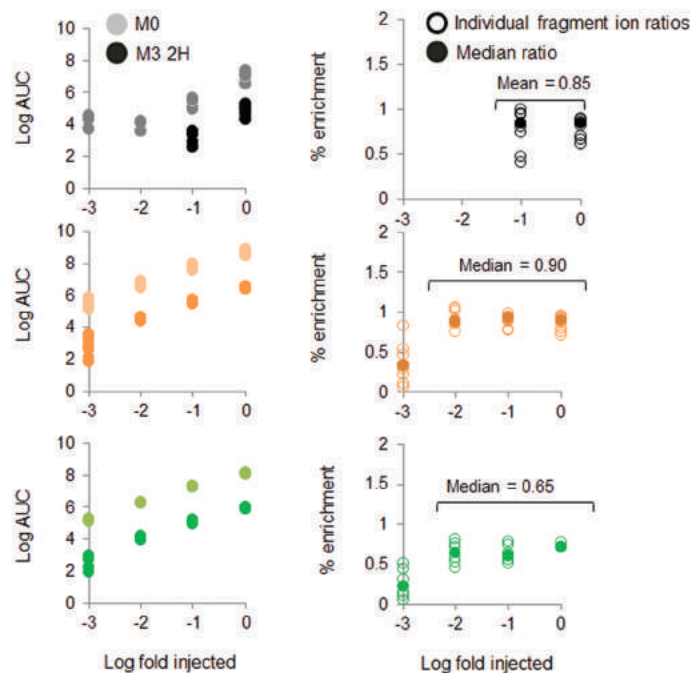
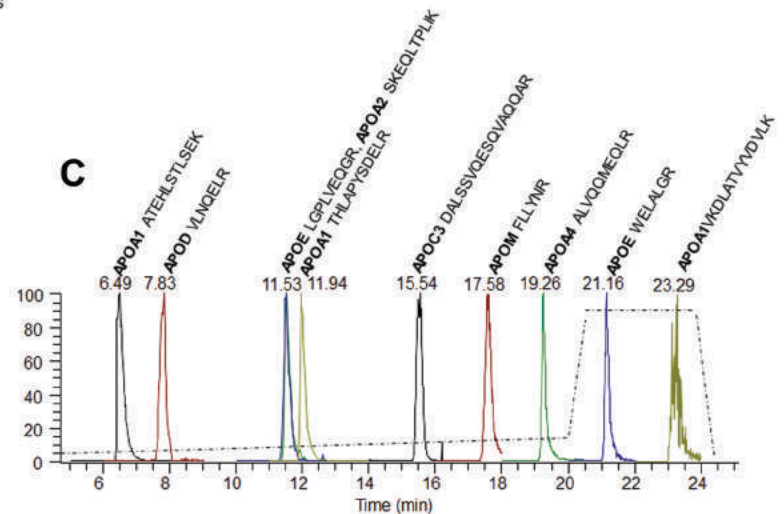


A**B****C**

Supplemental Figure 3. Limits of detection and quantification for low enrichment D3-Leu isotopically labeled peptides. (A) Standard curves for three apoA-I peptides and corresponding z-score plot. Z scores were calculated for each mixing ratio with the combined fragments ions of the three peptides. (B) A serial dilution analysis of the 100:1 D0-to-D3-Leu apoA-1 standard mixture. Left panel, absolute quantification of the area under the curve (AUC) of the M0 and 2H M3 peaks of fragment ions listed in (A). Right panel, the median ratios calculated for each dilution. (C) The extracted ion chromatograms of an M0 peak of a fragment ion for the indicated peptides. The relative peak abundances are scaled equally for demonstrative purposes.