

Supplemental Information

The solution structure of the forkhead box-O DNA binding domain of *Brugia malayi*
DAF-16a

Sarah K. Casper^{1,2^}, Scott J. Schoeller^{3^}, Danielle M. Zgoba¹, Andrew J. Phillips³,
Thomas J. Morien³, Gary R. Chaffee³, Peter C. Sackett^{1#}, Francis C. Peterson⁴, Kirsten
Crossgrove^{1*} and Christopher T. Veldkamp^{3,4*}

¹Department of Biological Sciences, University of Wisconsin-Whitewater, 800 West
Main Street, Whitewater, WI 53190, ²Department of Health Sciences, Blackhawk
Technical College, 1740 U.S. 41, Janesville, WI 53545, ³Department of Chemistry,
University of Wisconsin-Whitewater, 800 West Main Street, Whitewater, WI 53190,
⁴Department of Biochemistry, Medical College of Wisconsin, 8701 Watertown Plank
Road, Milwaukee, WI 53226

*Corresponding authors

^These authors contributed equally.

#Current Address: Evonik Industries, 900 S Palm St, Janesville, WI 53548.

Supplemental Figures

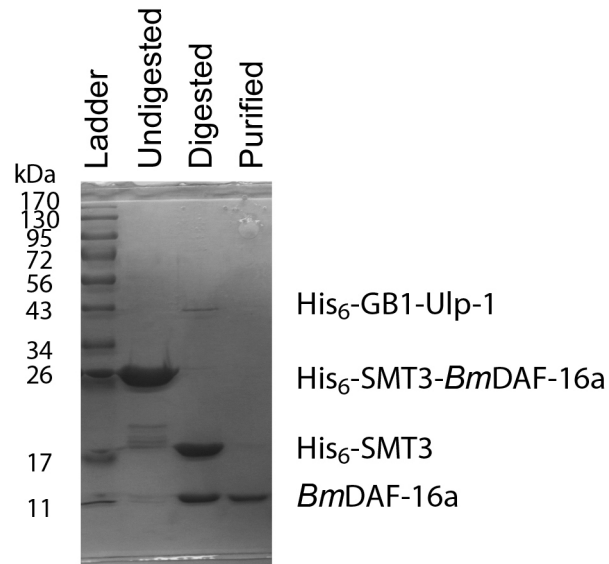


Figure S1. SDS-PAGE analysis of the purification of *BmDAF-16a* (342-442). Lane 1 contains molecular weight standards. Lane 2 contains refolded His₆-SMT3-*BmDAF-16a* (342-442) fusion protein. Lane 3 contains Ulp-1 digested fusion protein that was loaded onto an IMAC column. Lane 4 contains purified *BmDAF-16a* (342-442), the flow through from the IMAC column.

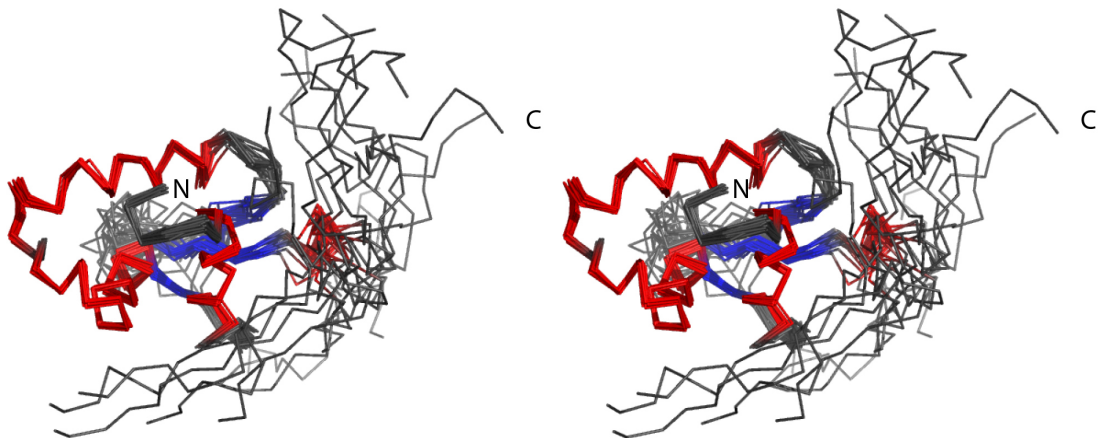


Figure S2. Stereo view of the ensemble of 20 *BmDAF-16a* (342-442) structures.

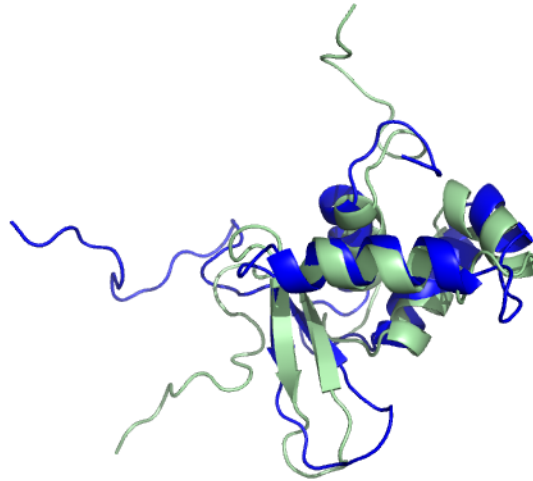


Figure S3. Superimposition of *Bm*-DAF-16a (342-442) (blue) and FOXO3a (PDB ID 2K86) (green). *Bm*-DAF-16a (342-442) and the DNA binding domain of FOXO3a are substantially similar with most small differences located at the termini or in loops.