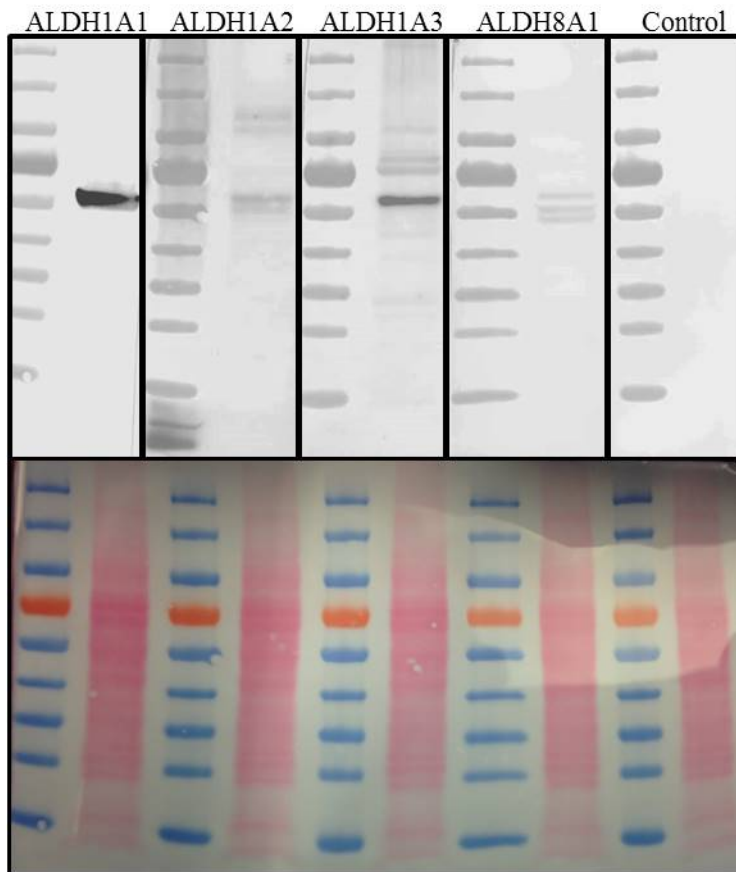


Kent et al., Supplemental Data



Supplemental Figure S1. ALDH Western Blots. Western Blots were performed on protein isolated from adult mouse testis. Bands were detected in all blots at approximately 58 kDA. The expected sizes of ALDH1A1, ALDH 1A2, ALDH1A3, and ALDH8A1 are 54.5, 56.7, 56.2, and 53.7 kDA, respectively. Ponceau staining was used to ensure equal loading.