

Lefevre et al., Supplemental Figure Legends

Supplemental Figure S1. Relative percentage of the PBDE congeners most represented in rat serum samples collected from females exposed to the different doses of the BFR mixture. n = 16-21.

Supplemental Figure S2. Primordial and preantral follicle sizes in ovaries collected from female rats exposed to an environmentally-relevant BFR mixture. Diameters (A) and areas (B) were measured in at least three primordial, primary and secondary follicles/ovary from five ovaries per experimental group. Values represent means \pm SEM. n = 5.

Supplemental Figure S3. Anti-Mullerian hormone (AMH) levels in serum collected from 16-21 rat females per experimental group. Values represent means \pm SEM.

Supplemental Figure S4. Quantification of catalase and superoxide dismutase 1 proteins in rat ovaries. The relative amounts of catalase (CAT; 60 kDA) and superoxide dismutase 1 (SOD1; 16 kDA) were analyzed in ovarian lysate samples from four rats per experimental group by densitometry of Western Blots and normalized against total protein using Ponceau S staining of the membranes.

Supplemental Figure S5. Immunolocalization of γ H2AX (A) and quantification of γ H2AX immunoreactive cells (B) in one to three antral follicles from ovarian sections obtained from three animals per experimental group. Values represent means \pm SEM. Bars represent 100 μ m.

Supplemental Figure S6. Immunolocalization of PCNA (A) and quantification of PCNA immunoreactive cells (B) in one to three antral follicles from ovarian sections obtained from three animals per experimental group. Relative amounts of PCNA (60 kDA) were analyzed in four ovarian lysate samples per experimental group by Western Blot (C) and quantified by densitometry (D) in rat ovaries exposed to an environmentally-relevant BFR mixture. Values represent means \pm SEM. Bars represent 100 μ m.

Figure S1

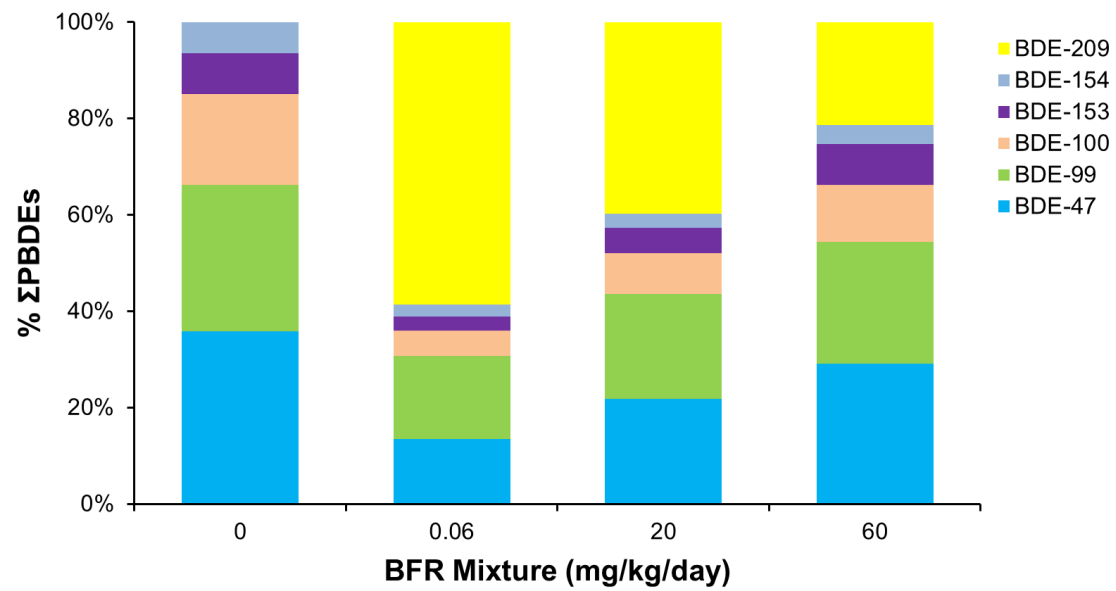


Figure S2

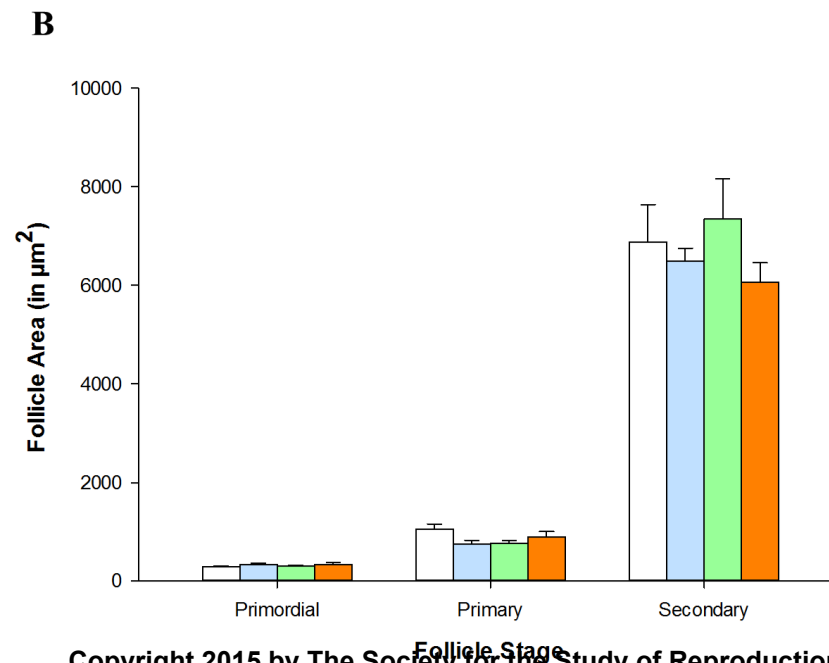
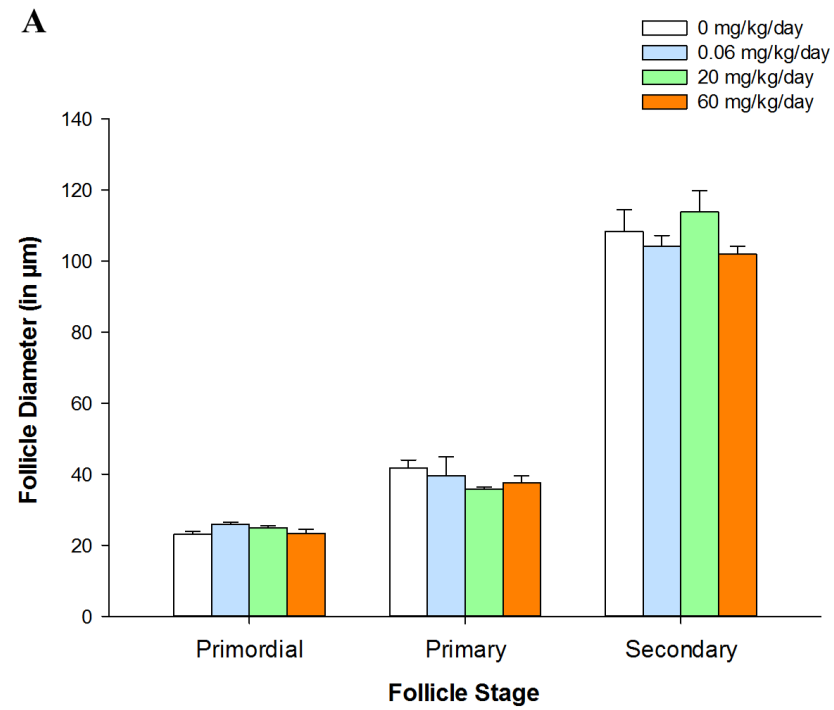


Figure S3

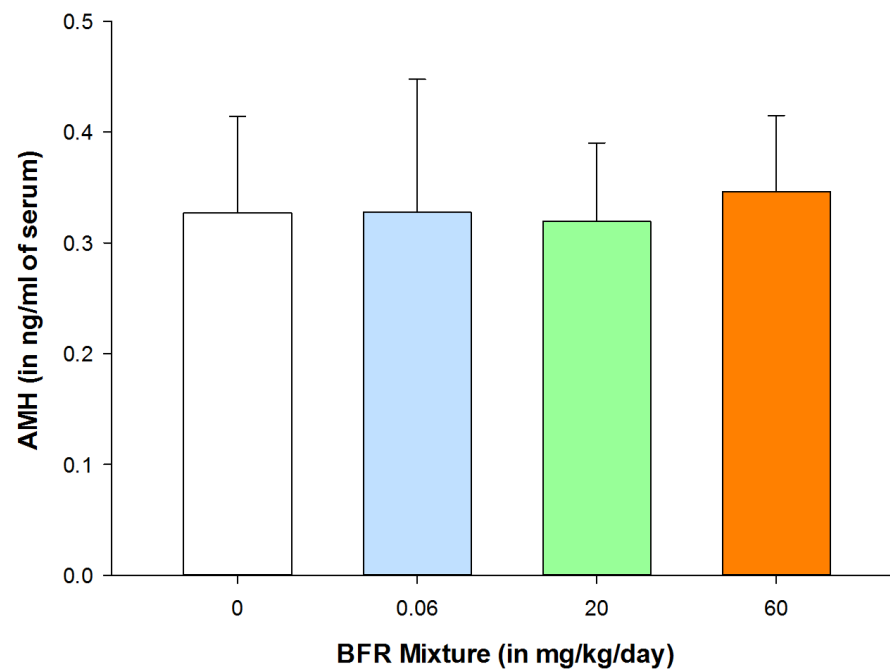


Figure S4

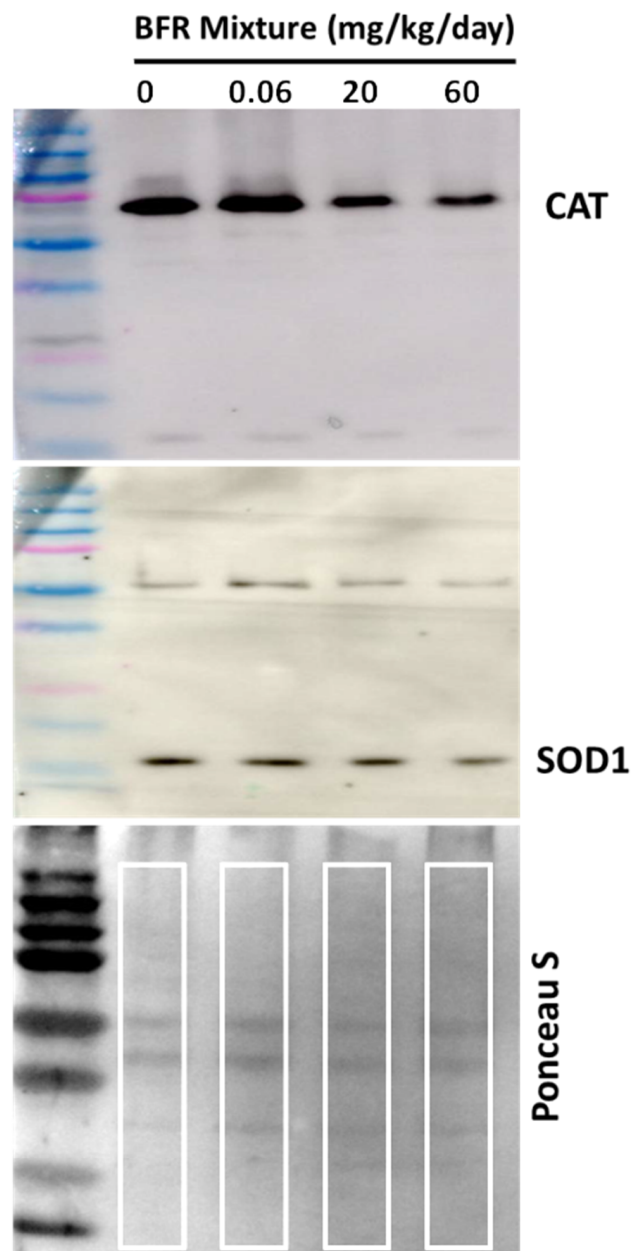


Figure S5

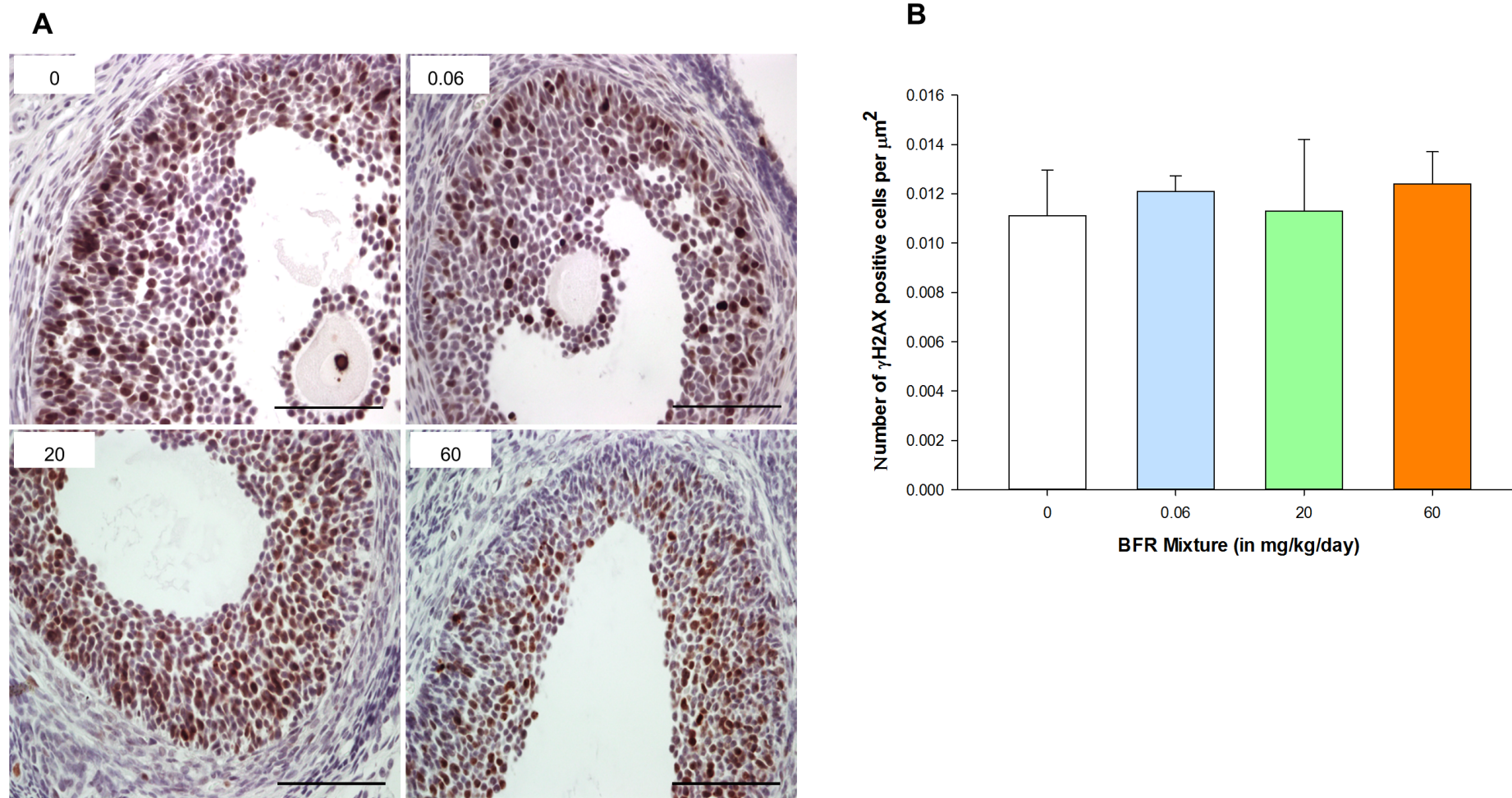


Figure S6

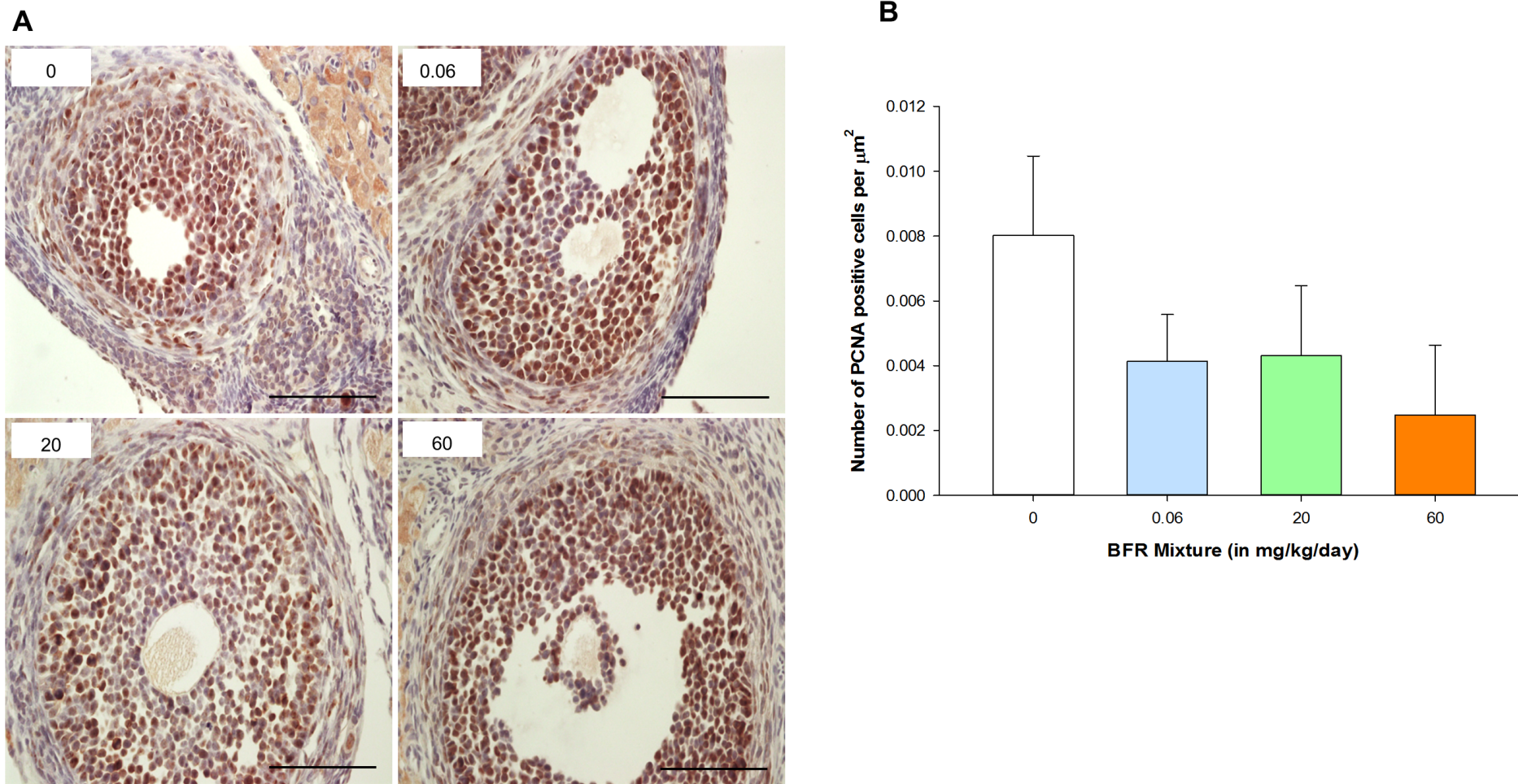


Figure S6 (continued)

