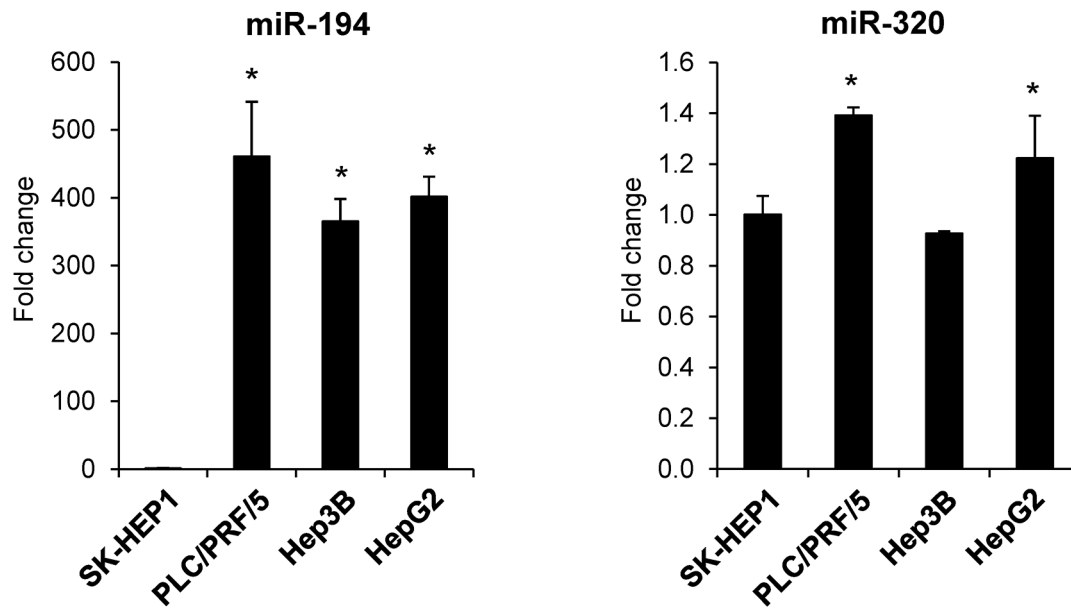
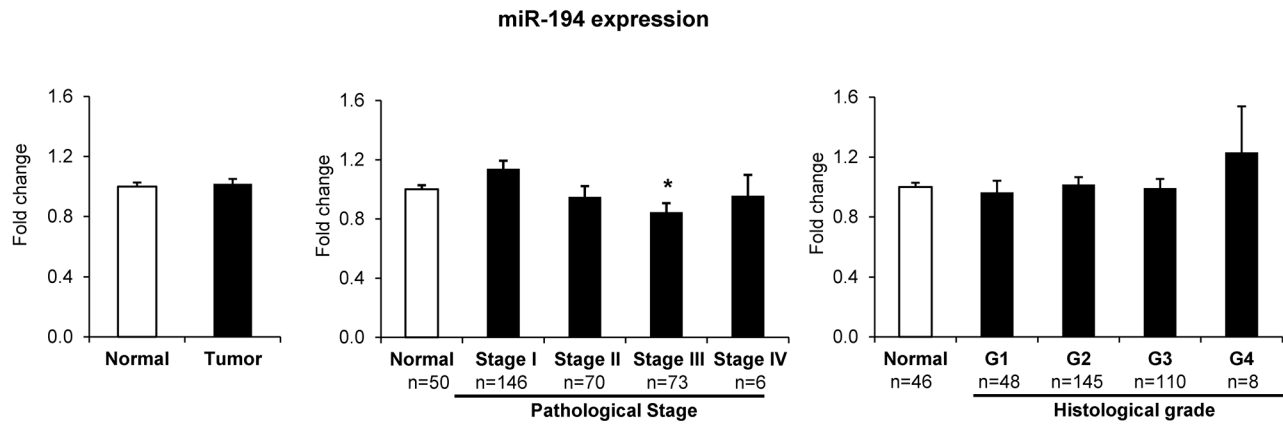


SUPPLEMENTARY FIGURES



Supplementary Figure S1: The expression of miR-152 in human liver cancer cells. Data are presented as an average fold change (mean \pm S.D., $n = 5$) in α -fetoprotein- and EPCAM-positive PLC/PRF/5, Hep3B, and HepG2 cells relatively to that in α -fetoprotein- and EPCAM-negative SK-HEP1 cells. *- Significantly different from SK-HEP1 cells.



Supplementary Figure S1: Expression of miR-194 in human HCC samples. miR-194 expression and clinical and tumor pathological data were extracted from The Cancer Genome Atlas database (TCGA; <http://cancergenome.nih.gov>).