

Prognostic impact of programmed cell death-1 (PD-1) and PD-ligand 1 (PD-L1) expression on cancer cells and tumor-infiltrating lymphocytes in ovarian high grade serous carcinoma

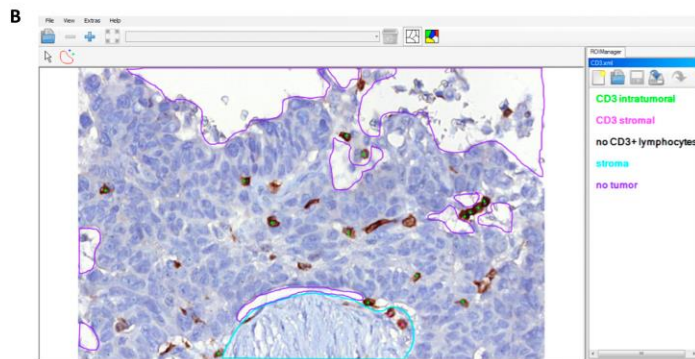
Supplementary Material

A

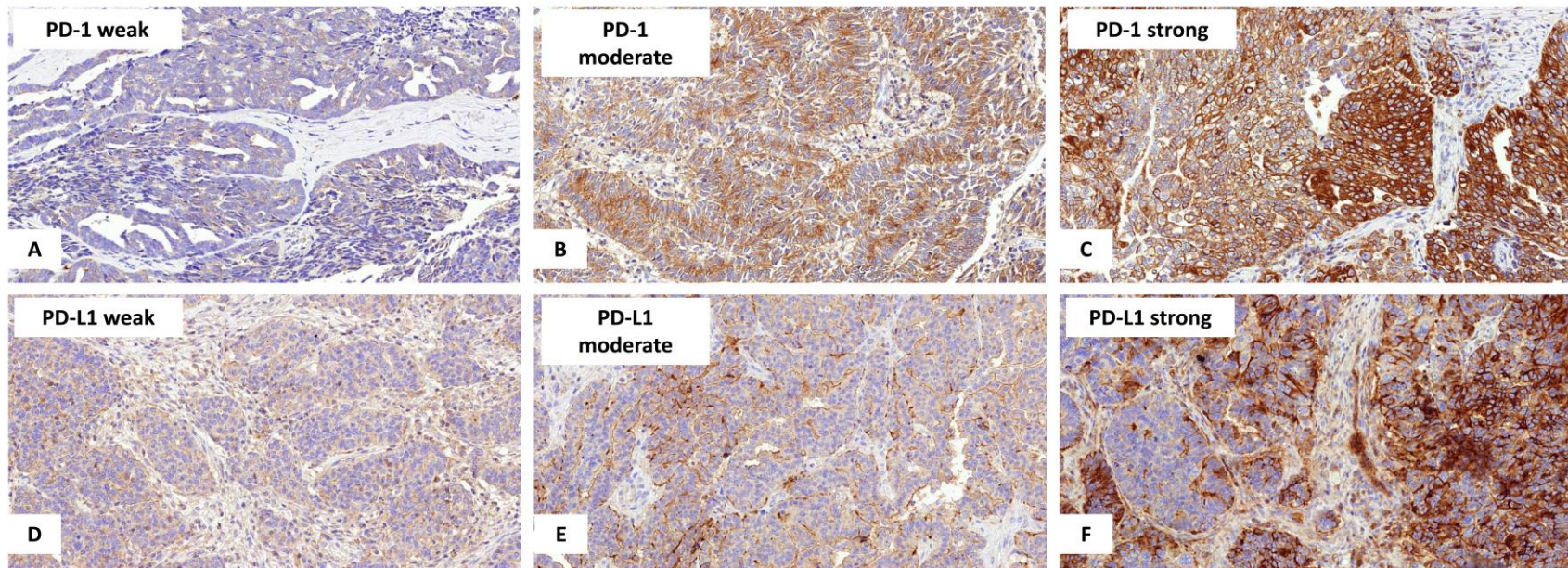
| Staining intensity | Score |
|--------------------|-------|
| Negative | 0 |
| Weak | 1 |
| Moderate | 2 |
| strong | 3 |

| Percentage of stained cancer cells | Score |
|------------------------------------|-------|
| 0% | 0 |
| 1-10% | 1 |
| 11-50% | 2 |
| 51-80% | 3 |
| 81-100% | 4 |

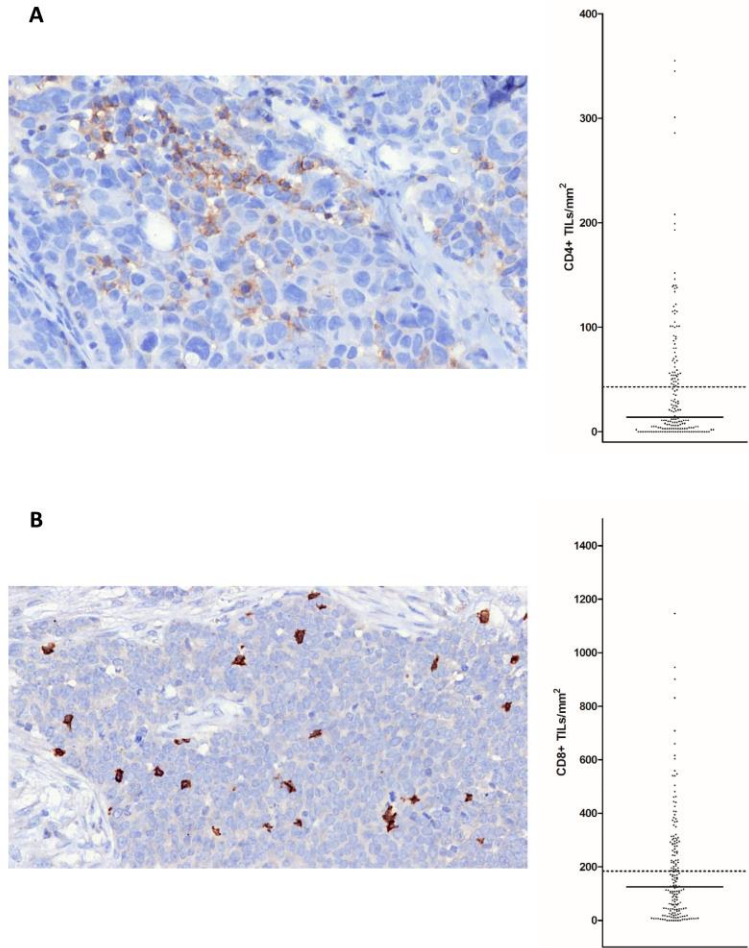
Immunoreactivity Score (IRS) = score_{intensity} X score_{percentage}



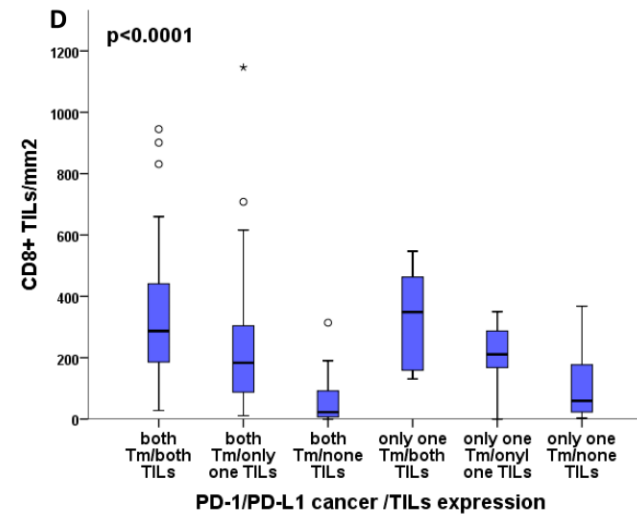
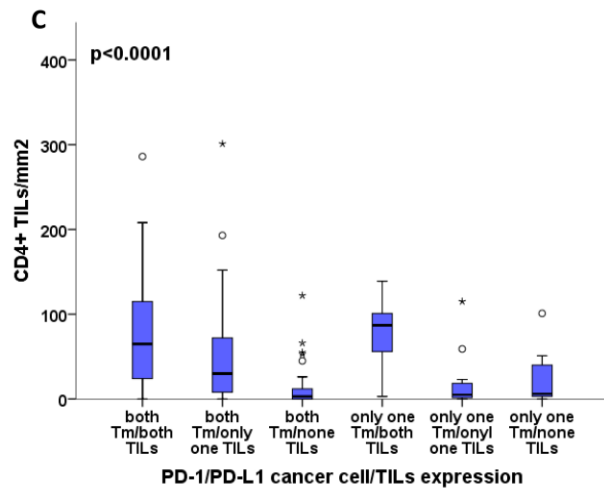
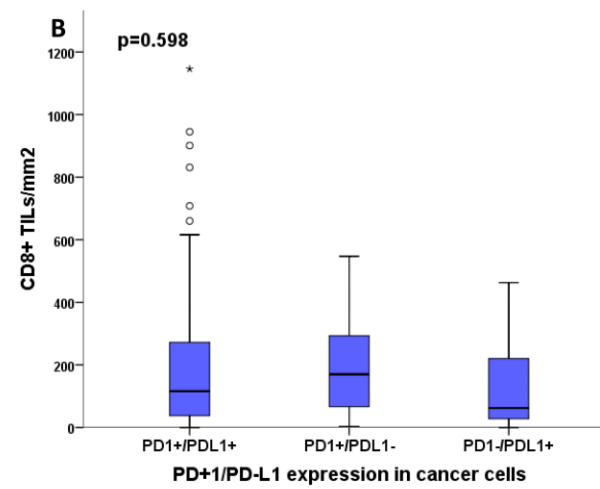
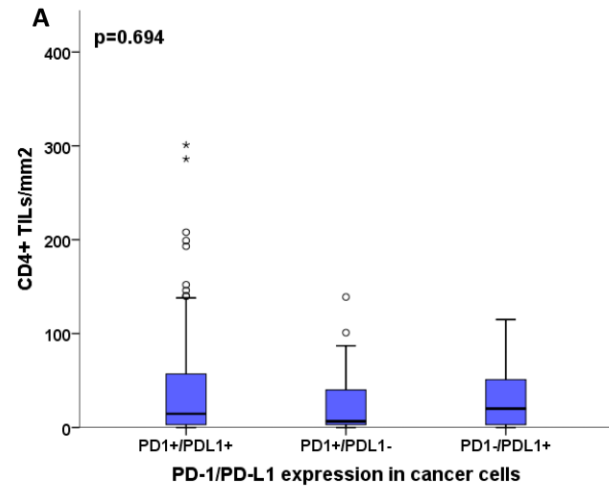
Suppl. Fig. S1 Illustration of PD-1 and PD-L1 immunohistochemical staining in cancer cells and TILs.: Multiplication of staining intensity score and score for the percentage of stained cells results in the immunoreactivity score (IRS), ranging from 0 to 12 **(A)**. Screenshot from the ROI Manager showing the quantification of CD3+ TILs in an ovarian carcinoma microphotograph: stromal areas are labelled in turquoise, non-tissue areas in blue, intratumoral TILs in green, stromal TILs in pink **(B)**



Suppl. Fig. S2 Examples for cancer cell immunohistochemical staining in varying intensities: PD-1 **(A-C)**, PD-L1 **(D-F)**

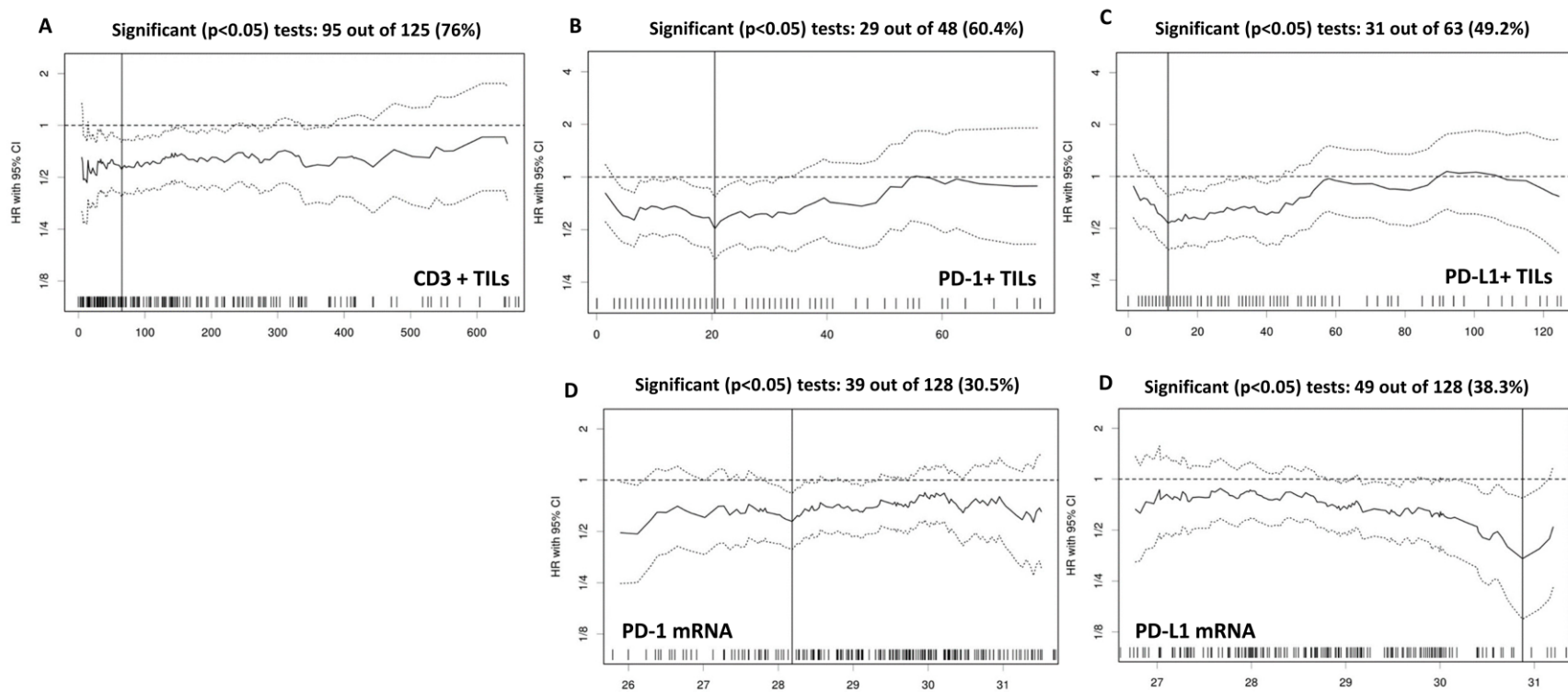


Suppl. Fig. S3 Distribution of CD4+ and CD8+ TILs: Immunohistochemical staining of CD4+ **(A)** and CD8+ **(B)** TILs. The diagrams on the right show the distribution of TILs/mm² tumor area (bars: median, dotted lines: means).



Suppl. Fig. 4 Interaction of CD4+ and CD8+ TILs with PD-1 and PD-L1 expression: Dependence of CD4+ **(A)** and CD8+ **(B)** TILs from combined PD-1 and PD-L1 expression in cancer cells. Dependence of CD4+ **(C)** and CD8+ **(D)** TILs from combined PD-1 and PD-L1 expression in cancer cells as well as in TILs.

(bars: median, box: interquartile range (IQR), whiskers: 1,5×IQR, dots and stars: outliers, p: Kruskal-Wallis test)



Suppl. Fig. S5 Cutoff point determination using Cutoff Finder (molpath.charite.de/cutoff/): Hazard ratios (HR) are plotted against each possible cutoff point (CI: 95% confidence interval). Numbers and rates of significant cutoff points are indicated above each diagram: PFS according to CD3+ TILs **(A)**. PFS according to PD-1+ TILs **(B)**. PFS according to PD-L1+ TILs **(C)**. PFS according to PD-1 mRNA expression **(D)**. PFS according to PD-L1 mRNA expression **(E)**.

Supplemental Table S1: Survival Analysis - Overall survival

| | <i>univariate</i> | | | <i>multivariate</i> | |
|--|---------------------------|------------------------------|--------------|---------------------|-------|
| | no of events/ no of cases | median survival, months (SE) | p (log rank) | HR (95% CI) | p |
| PD-1 in tumor cells (membranous) | | | | | |
| Negative | 18/ 22 | 46.95 (8.7) | | 1 | |
| positive | 87/ 179 | 51.45 (9.3) | 0.059 | 0.79 (0.46-1.37) | 0.400 |
| PD-L1 in tumor cells (membranous) | | | | | |
| Negative | 18/ 24 | 37.91 (3.9) | | 1 | |
| positive | 88/ 178 | 50.63 (8.3) | 0.045 | 0.51 (0.28-0.91) | 0.023 |
| PD-1/PD-L1 in tumor cells combination | | | | | |
| PD-1+/PD-L1+ | 74/ 159 | 65.68 (10.6) | | 1 | |
| PD-1+/PD-L1- | 15/ 21 | 37.91 (3.6) | | 2.28 (1.23-4.33) | |
| PD-1-/PD-L1+ | 14/ 18 | 47.74 (1.5) | | 1.18 (0.64-2.17) | |
| PD-1-/PD-L1- | 2/ 2 | 23.62 (-) | 0.051 | 3.07 (0.40-23.31) | 0.065 |
| CD3+ TILs/mm² | | | | | |
| <=65 | 43/ 72 | 40.05 (2.7) | | 1 | |
| > 65 | 61/ 128 | 66.83 (9.0) | 0.003 | 0.63 (0.40-1.00) | 0.037 |
| PD-1+ TILs/mm² | | | | | |
| <=11 | 57/ 97 | 42.51 (3.6) | | 1 | |
| >11 | 47/ 103 | 68.37 (9.4) | 0.012 | 0.58 (0.37-0.91) | 0.018 |
| PD-L1+ TILs/mm² | | | | | |
| <=20 | 81/ 140 | 44.45 (2.77) | | 1 | |
| >20 | 23/ 60 | 96.10 (-) | 0.011 | 0.73 (0.44-1.20) | 0.214 |
| PD-1/CD3 TILs combination | | | | | |
| CD3+ TILs low | 43/72 | 40.05 (2.8) | | 1 | |
| CD3+ TILs high/PD-1+ TILs low | 20/32 | 47.74 (9.1) | | 1.02 [0.53-1.96] | |
| CD3+ TILs high/PD-1+ TILs high | 41/96 | 71.23 (13.4) | 0.004 | 0.54 (0.33-.087) | 0.023 |
| PD-L1/CD3 TILs combination | | | | | |
| CD3+ TILs low | 43/72 | 40.05 (2.7) | | 1 | |
| CD3+ TILs high/PD-L1+ TILs low | 39/70 | 65.31 (11.0) | 0.004 | 0.64 (0.39-1.06) | |
| CD3+ TILs high/PD-L1+ TILs high | 22/58 | Not reached | | 0.58 (0.32-1.03) | 0.106 |
| PD-1 mRNA (40 – deltaCT) | | | | | |
| <=28.18 | 33/51 | 42.19 (4.6) | | 1 | |
| >28.18 | 70/149 | 65.31 (10.9) | 0.036 | 0.65 (0.40-0.98) | 0.042 |
| PD-L1 mRNA (40 – deltaCT) | | | | | |
| <=29.99 | 92/166 | 46.49 (3.3) | | 1 | |
| >29.99 | 14/37 | Not reached | 0.045 | 0.55 (0.30-0.99) | 0.047 |
| PD-1/PD-L1 mRNA combination | | | | | |

| | | | | | |
|----------------|--------|--------------|-------|------------------|-------|
| PD-1+/PD-L1+ | 13/36 | Not reached | | 1 | |
| PD1+ or PD-L1+ | 58/114 | 50.63 (11.0) | | 1.69 (0.89-3.21) | |
| PD-1-/PD-L1- | 31/49 | 42.86 (4.4) | 0.045 | 2.31 (1.16-4.61) | 0.056 |

SE: standard error; HR: hazard ratio; CI: confidence interval; for each marker multivariate analysis was performed including age (<=60 vs > 60 years), stage (FIGO I/II vs III/IV), and residual tumor (none vs any)

Supplemental Table S2: Summary: Progression-Free Survival in Subgroup with Platinum-Based Chemotherapy

| | <i>univariate</i> | | | <i>multivariate</i> | |
|--|---------------------------|-------------------------|--------------|---------------------|-------|
| | no of events/ no of cases | median survival, months | p (log rank) | HR | p |
| PD-1 in tumor cells (membranous) | | | | | |
| Negative | 18/19 | 14.46 (2.4) | | 1 | |
| positive | 86/124 | 25.53 (2.7) | 0.007 | 0.57 | 0.035 |
| PD-L1 in tumor cells (membranous) | | | | | |
| Negative | 18/19 | 14.13 (1.6) | | 1 | |
| positive | 87/125 | 25.69 (2.6) | 0.002 | 0.41 | 0.001 |
| PD-1/PD-L1 in tumor cells combination | | | | | |
| PD-1+/PD-L1+ | 72/109 | 26.88 (3.2) | | 1 | |
| PD-1+/PD-L1- | 16/17 | 14.13 (5.1) | | 2.68 | |
| PD-1-/PD-L1+ | 15/16 | 15.11 (3.9) | | 1.78 | |
| PD-1-/PD-L1- | 1/1 | 15.31 (-) | 0.002 | 2.23 | 0.004 |
| CD3+ TILs/mm² | | | | 1 | |
| <=65 | 42/49 | 16.46 (2.3) | | 0.63 | 0.031 |
| > 65 | 61/93 | 28.88 (2.8) | 0.005 | | |
| PD-1+ TILs/mm² | | | | 1 | |
| <=11 | 55/66 | 16.46 (2.2) | | 0.63 | 0.005 |
| >11 | 48/76 | 31.11 (4.9) | 0.002 | | |
| PD-L1+ TILs/mm² | | | | 1 | |
| <=20 | 80/103 | 20.24 (2.0) | | 0.72 | 0.055 |
| >20 | 23/39 | 33.05 (4.8) | 0.008 | | |
| PD-1/CD3 TILs combination | | | | 1 | |
| CD3+ TILs low | 42/49 | 16.46 (2.3) | | 0.72 | |
| CD3+ TILs high/PD-1+ TILs low | 16/21 | 17.41 (5.0) | | 0.53 | 0.031 |
| CD3+ TILs high/PD-1+ TILs high | 45/72 | 31.11 (5.1) | 0.006 | | |
| PD-L1/CD3 TILs combination | | | | 1 | |
| CD3+ TILs low | 42/49 | 16.46 (2.3) | | 0.71 | |
| CD3+ TILs high/PD-L1+ TILs low | 39/56 | 24.74 (5.0) | 0.006 | 0.61 | 0.064 |
| CD3+ TILs high/PD-L1+ TILs high | 22/37 | 33.05 (4.9) | | | |
| PD-1 mRNA (40 – deltaCT) | | | | 1 | |
| <=28.18 | 35/38 | 15.11 (2.1) | | 0.46 | 0.001 |
| >28.18 | 67/104 | 27.57 (2.8) | 0.002 | | |
| PD-L1 mRNA (40 – deltaCT) | | | | 1 | |
| <=30.45 | 87/116 | 20.70 (2.5) | | 0.41 | 0.002 |
| >30.45 | 17/28 | 35.81 (9.2) | 0.020 | | |
| PD-1/PD-L1 mRNA combination | | | | | |

| | | | | | |
|----------------|-------|-------------|-------|------|---------|
| PD1+/PD-L1+ | 16/27 | 35.81 (7.5) | | 1 | |
| PD1+ or PD-L1+ | 52/78 | 26.12 (3.9) | | 2.07 | |
| PD1-/PD-L1- | 33/36 | 15.11 (2.0) | 0.003 | 3.69 | <0.0001 |

SE: standard error; HR: hazard ratio; CI: confidence interval; for each marker multivariate analysis was performed including age (<=60 vs > 60 years), stage (FIGO I/II vs III/IV), and residual tumor (none vs any)

Supplemental Table S3: Summary: Progression-Free Survival in Subgroup with Platinum-Based Chemotherapy and no Residual Tumor

| | <i>univariate</i> | | | <i>multivariate</i> | |
|--|---------------------------|-------------------------|--------------|---------------------|---------|
| | no of events/ no of cases | median survival, months | p (log rank) | HR | p |
| PD-1 in tumor cells (membranous) | | | | | |
| Negative | 10/11 | 12.5 (2.8) | | 1 | |
| positive | 57/77 | 26.9 (3.4) | 0.010 | 0.48 | 0.040 |
| PD-L1 in tumor cells (membranous) | | | | | |
| Negative | 12/12 | 13.4 (0.9) | | 1 | |
| positive | 56/77 | 27.6 (2.3) | 0.001 | 0.30 | <0.0001 |
| PD-1/PD-L1 in tumor cells combination | | | | | |
| PD-1+/PD-L1+ | 48/68 | 27.57 (2.8) | | 1 | |
| PD-1+/PD-L1- | 11/11 | 14.13 (4.8) | | 3.4 | |
| PD-1-/PD-L1+ | 8/9 | 14.46 (2.9) | | 1.9 | |
| PD-1-/PD-L1- | 0 | - | 0.001 | - | 0.001 |
| CD3+ TILs/mm² | | | | | |
| <=65 | 24/27 | 20.24 (3.5) | | 1 | |
| > 65 | 42/60 | 29.18 (3.0) | 0.005 | 0.53 | 0.018 |
| PD-1+ TILs/mm² | | | | | |
| <=11 | 33/38 | 17.41 (2.0) | | 1 | |
| >11 | 33/49 | 31.11 (3.0) | 0.002 | 0.41 | 0.001 |
| PD-L1+ TILs/mm² | | | | | |
| <=20 | 49/60 | 20.70 (3.4) | | 1 | |
| >20 | 17/27 | 31.28 (3.0) | 0.032 | 0.56 | 0.061 |
| PD-1/CD3 TILs combination | | | | | |
| CD3+ TILs low | 24/27 | 20.24 (3.5) | | 1 | |
| CD3+ TILs high/PD-1+ TILs low | 11/14 | 17.41 (4.2) | | 0.85 | |
| CD3+ TILs high/PD-1+ TILs high | 31/46 | 31.11 (5.9) | 0.009 | 0.47 | 0.025 |
| PD-L1/CD3 TILs combination | | | | | |
| CD3+ TILs low | 24/27 | 20.24 (3.1) | | 1 | |
| CD3+ TILs high/PD-L1+ TILs low | 25/34 | 28.88 (7.1) | | 0.59 | 0.046 |
| CD3+ TILs high/PD-L1+ TILs high | 17/26 | 31.28 (4.68) | 0.012 | 0.46 | |

| | | | | | |
|------------------------------------|-------|--------------|-------|------|-------|
| PD-1 mRNA (40 – deltaCT) | | | | | |
| <=28.18 | 8/8 | 11.34 (2.4) | | 1 | |
| >28.18 | 21/31 | 21.22 (2.2) | 0.011 | 0.53 | 0.012 |
| PD-L1 mRNA (40 – deltaCT) | | | | | |
| <=30.45 | 57/70 | 20.7 (3.3) | | 1 | |
| >30.45 | 9/18 | 43.2 (3.0) | 0.005 | 0.36 | 0.004 |
| PD-1/PD-L1 mRNA combination | | | | | |
| PD1+/PD-L1+ | 8/17 | 38.74 (-) | | 1 | |
| PD1+ or PD-L1+ | 33/44 | 27.43 (5.38) | | 2.6 | |
| PD1-/PD-L1- | 24/26 | 16.46 (3.61) | 0.006 | 3.8 | 0.015 |

SE: standard error; HR: hazard ratio; CI: confidence interval; for each marker multivariate analysis was performed including age (<=60 vs > 60 years), and stage (FIGO I/II vs III/IV)