

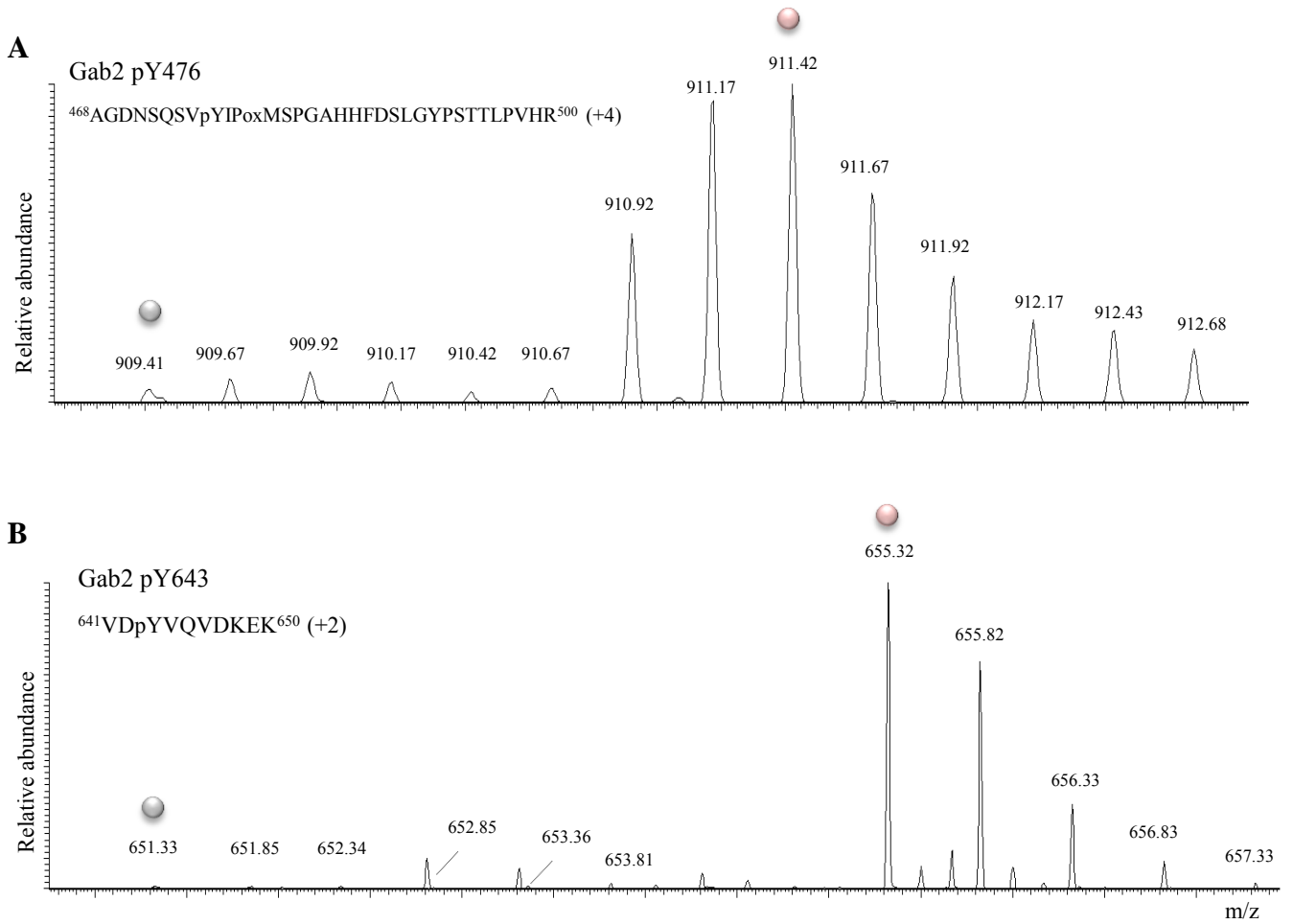
Supplementary Information

Changes in Gab2 phosphorylation and interaction partners in response to interleukin (IL)-2 stimulation in T-lymphocytes

Nerea Osinalde, Virginia Sánchez-Quiles, Blagoy Blagoev & Irina Kratchmarova*

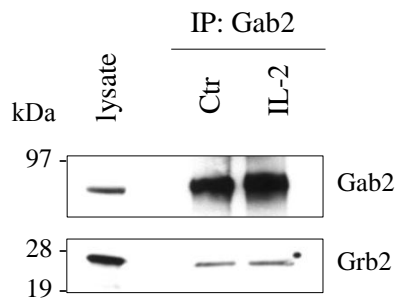
Department of Biochemistry and Molecular Biology, University of Southern Denmark, 5230 Odense M, Denmark.

Osinalde_Supplementary Figure S2



Supplementary Figure S2. MS spectra of pY-bearing peptides induced upon IL-2 stimulation. MS spectra of (A) pY468 and (B) pY643- containing phosphopeptides shows that both phosphopeptides are more abundant in IL-2-treated condition (heavy SILAC condition, pink dot) in comparison to control condition (light SILAC condition, grey dot). Therefore, results indicate that GAB2 Y468 and Y643 become phosphorylated in IL-2-treated Kit225 T-cells in vivo.

Osinalde_Supplementary Figure S3



Supplementary Figure S3. Gab2 constitutively associates with Grb2 in Kit225 T-cells. Immunoprecipitation of Gab2 followed by immunoblotting detection confirmed our MS-based data indicating that Gab2 and Grb2 constitutively interact in Kit225 T-lymphocytes

Supplementary Table S1. List of primers used in real time PCR analyses for mRNA expression

Gene	Forward primer (5'-3') Sequence	Reverse primer (5'-3') Sequence
Gab1	AAGACTACCTGTTGCTCATCAACTGT	GGACGTTATCATTGGAGTCTGTTTC
Gab2	GCCGGCACAATACAGAATTCA	GTGAGGCTGCCCTTGGTGT
Gab3	CACTGCAGCCCTGATGACTA	GAGAAAGCTGGTTCGACTG
β -actin	GACAGCAGTCGGTTGGAGCG	ACCTCCCCTGTGTGGACTTGG