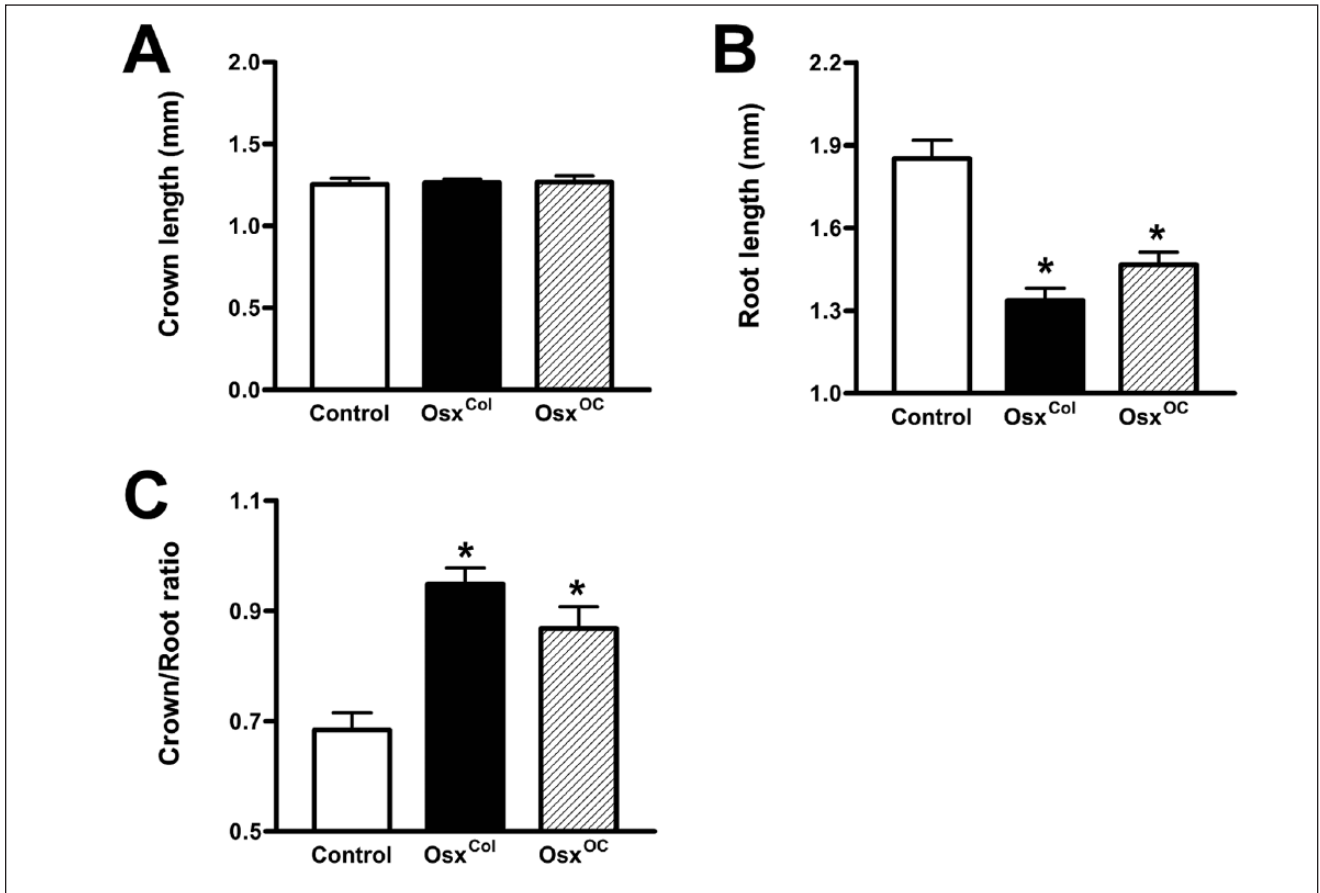


Osterix Regulates Tooth Root Formation in a Site-specific Manner

T.H. Kim^{1*}, C.H. Bae^{1*}, J.C. Lee¹, J.E. Kim², X. Yang³, B. de Crombrughe⁴, and E.S. Cho¹

Appendix



Appendix Figure 1. Measurement of crown and root length in the mandibular first molars of *Osx^{Col}* and *Osx^{OC}* mice at 4 wk. (A) Crown length. (B) Root length. (C) Crown/root ratio. * $P < 0.05$.

¹Cluster for Craniofacial Development and Regeneration Research, Institute of Oral Biosciences, Chonbuk National University School of Dentistry, Jeonju, South Korea

²Department of Molecular Medicine, School of Medicine, Kyungpook National University, Daegu, South Korea

³Genetic Laboratory of Development and Disease, Institute of Biotechnology, Beijing, China

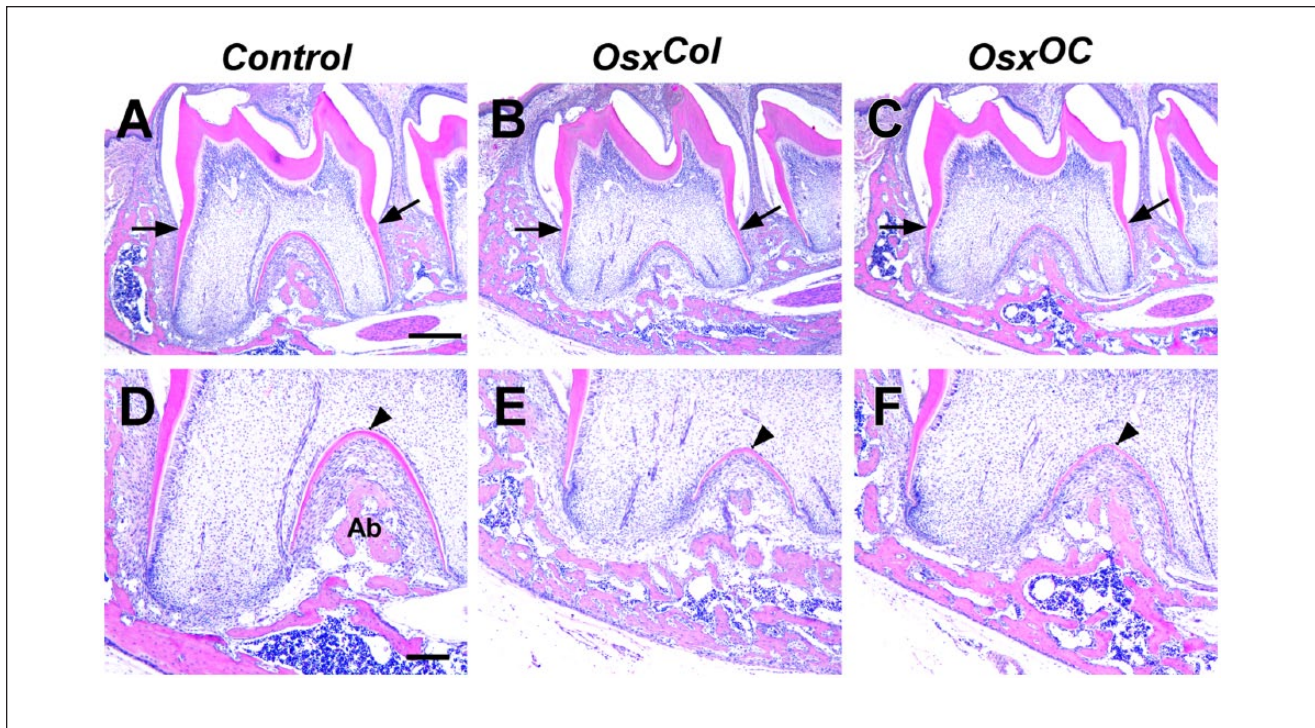
⁴Department of Molecular Genetics, The University of Texas M.D. Anderson Cancer Center, Houston, TX, USA

*Authors contributing equally to this work.

Corresponding Author:

E.S. Cho, Laboratory for Craniofacial Biology, Chonbuk National University School of Dentistry, 567 Baekje-daero, Deokjin-gu, Jeonju 561-756, South Korea.

Email: oasis@jbnu.ac.kr



Appendix Figure 2. Histologic features of the mandibular first molars in *Osx^{Col}* and *Osx^{OC}* mice at P14. The black arrows indicate cemento-enamel junction and black arrowheads indicate interradicular dentin. Ab, alveolar bone. Scale bars: 300 μm (A–C), 200 μm (D–F).