

Supplementary Material

Relaxed functional constraints on triplicate α -globin gene in the bank vole suggest different evolutionary history from other rodents

S Marková, JB Searle and P Kotlík

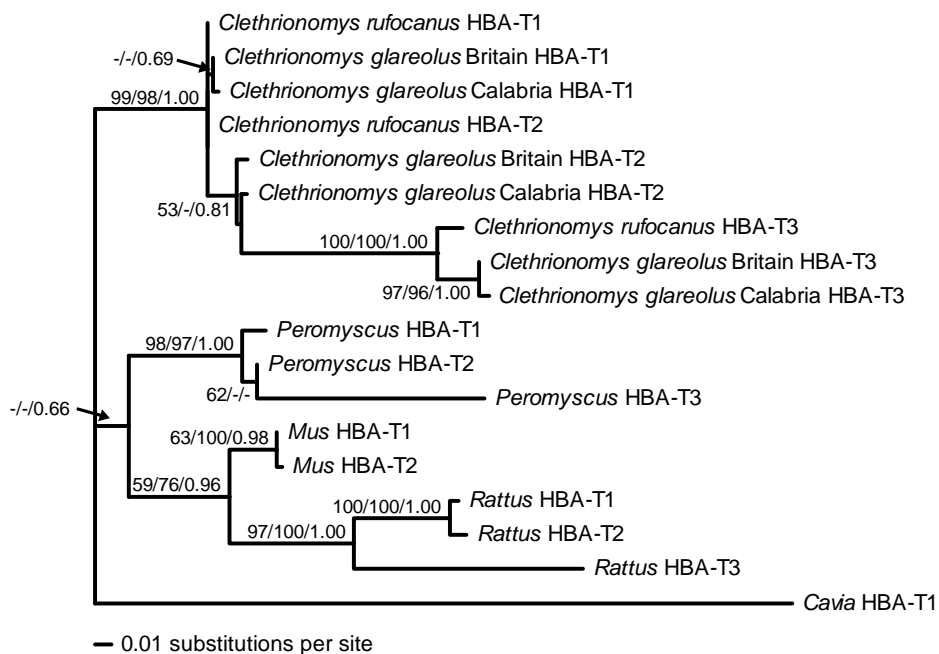


Figure S1 Orthologous relationship of HBA-T3 genes of *Clethrionomys* voles as inferred by maximum likelihood. The HBA-T3 genes of the Calabrian form of the bank vole (*C. glareolus*) and of the grey red-backed vole (*C. rufocanus*) are clustered with the HBA-T3 gene of the bank vole from Britain, showing they are descended from the same duplication event and their relationships are not obscured by gene conversion. Statistical support for tree bipartitions is expressed as percentage bootstrap values from ML/neighbour-joining analyses and as Bayesian posterior probabilities (values lower than 50% not shown).