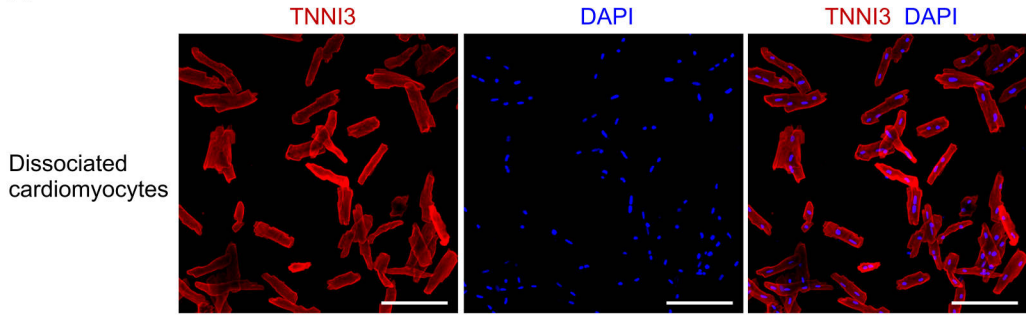
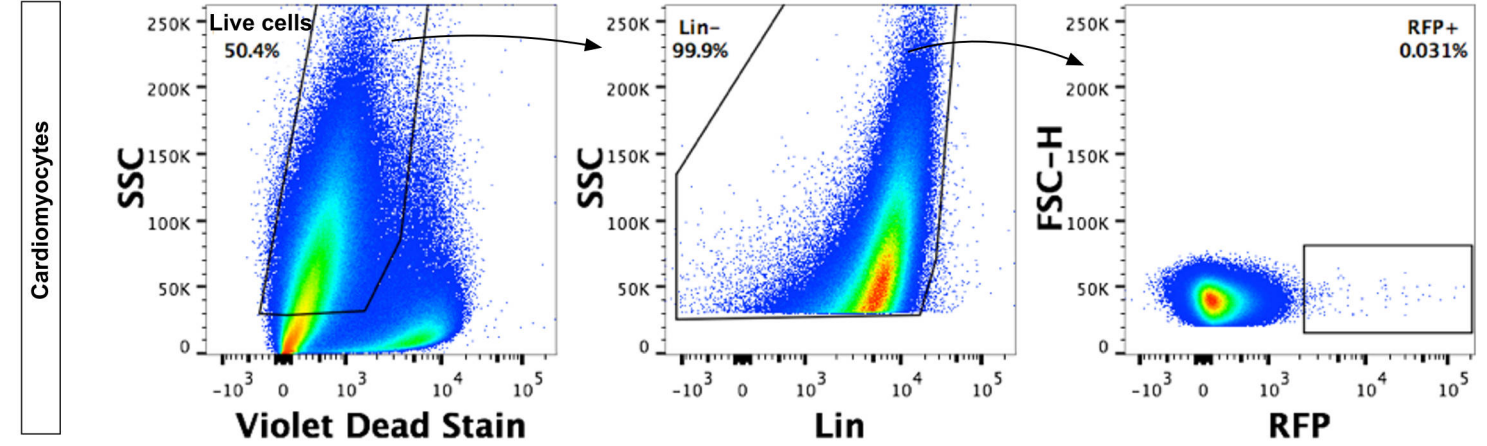
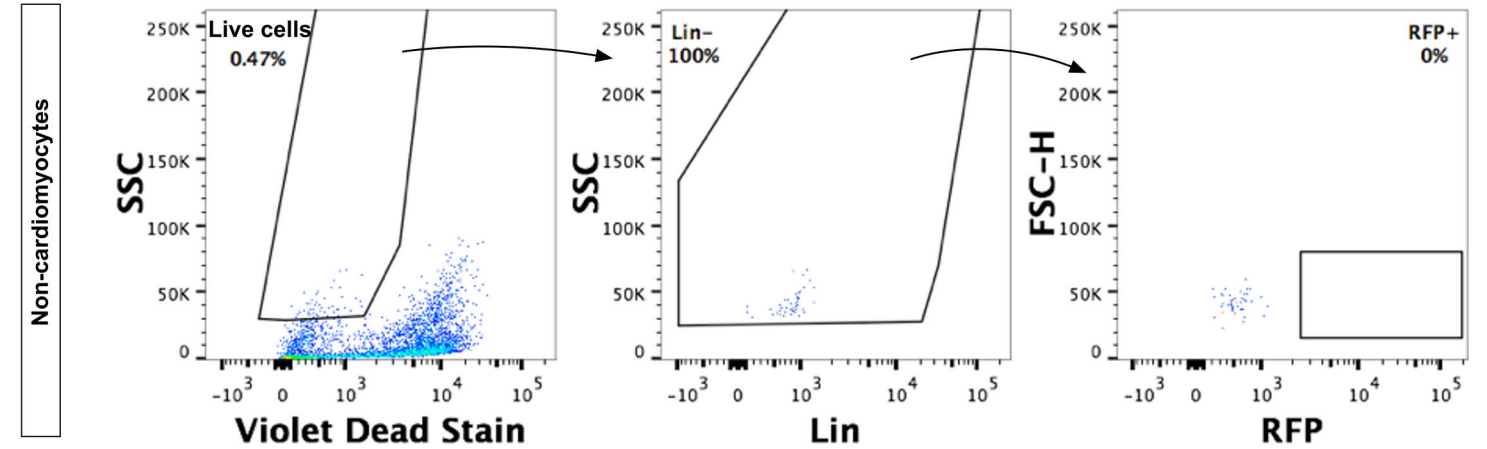


**A****B****C**

**Supplementary information, Figure S3** Cardiomyocytes specific gating strategy. **(A)** Immunostaining for TNNI3 on dissociated cardiomyocytes showed most cells were expressing TNNI3. Nuclei were stained with DAPI. Scale bars, 100  $\mu$ m. **(B)** Flow cytometry plot gated on live cardiomyocytes and lineage negative (LIN-) sequentially from *Kit-CreER; Rosa26-RFP* mice. **(C)** Same gating strategy applied to non-cardiomyocytes showed no RFP+ cells, suggesting RFP+ cells in (A) do not contain any RFP+ non-cardiomyocytes using this cardiomyocyte specific gating strategy. Cardiomyocytes and non-cardiomyocytes were dissociated from adult heart by digestion and centrifuge, as described in Methods.