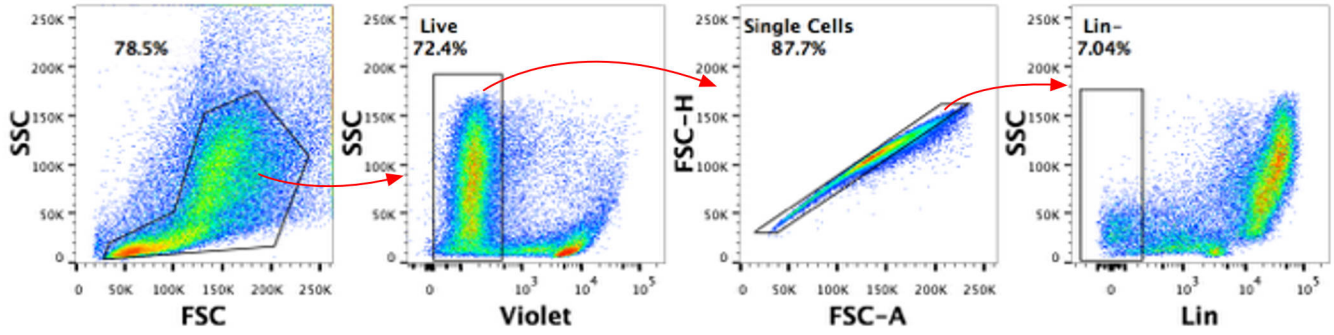
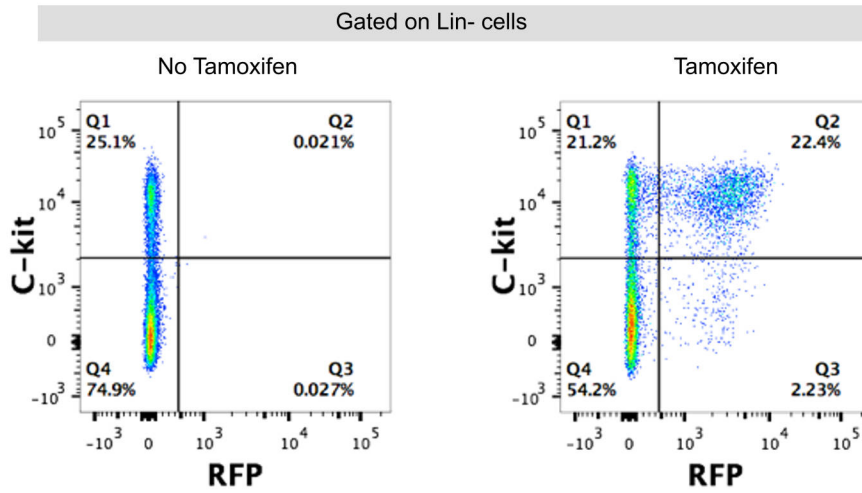


**A****B**

**Supplementary information, Figure S6** Labeling efficiency and specificity of *Kit-CreER*. **(A)** Gating strategy of lineage negative (Lin<sup>-</sup>) cells from bone marrow of *Kit-CreER; Rosa26-RFP* mice. **(B)** Flow cytometry analysis of c-Kit<sup>+</sup> and RFP<sup>+</sup> populations gated on Lin<sup>-</sup> cells. After one pulse tamoxifen induction, Kit-CreER labels over 50% c-Kit<sup>+</sup> cells (efficiency), and over 90% Kit-CreER labeled cells are c-Kit<sup>+</sup> (specificity).