

Supplementary information, Figure S3

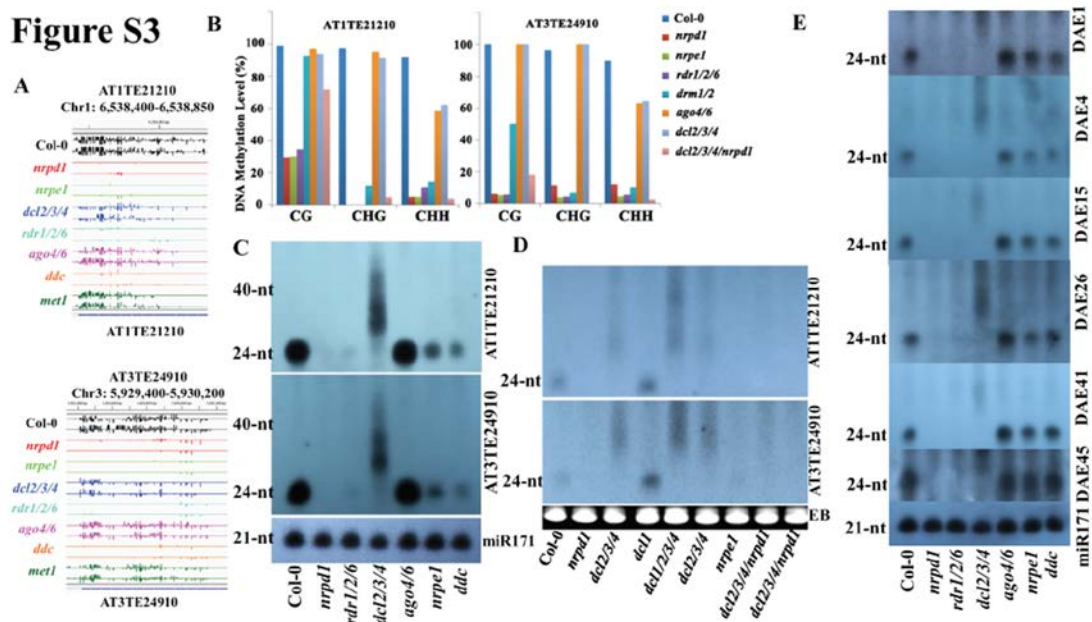


Figure S3 DNA methylation and small RNA levels at DA loci. **(A)** IGV genome browser screenshots showing the DNA methylation levels at two DA loci: AT1TE21210 and AT3TE24910. **(B)** Individual locus bisulfite sequencing of the two DA loci confirmed the dependence on *NRPD1*, *NRPE1* and *DRM1/2* but not *DCL2/3/4* or *AGO4/6* for DNA methylation. **(C)** Northern blotting showing smears of RNAs of 25-50 nt sizes in the *dcl2/3/4* triple mutant at the two DA loci. miR171 served as a loading control. **(D)** Northern blotting showing that the smears of RNAs in *dcl2/3/4* are *NRPD1* dependent at the two DA loci. The ethidium bromide (EB) stained small RNAs served as a control for equal loading. **(E)** Small RNA Northern blotting identified 25-50 nt RNAs at the DAE loci in the *dcl2/3/4* mutant. Small RNAs with the size of 24-nt are indicated on the left side of the blots and the mutant plants used for the analyses are indicated below the blots.