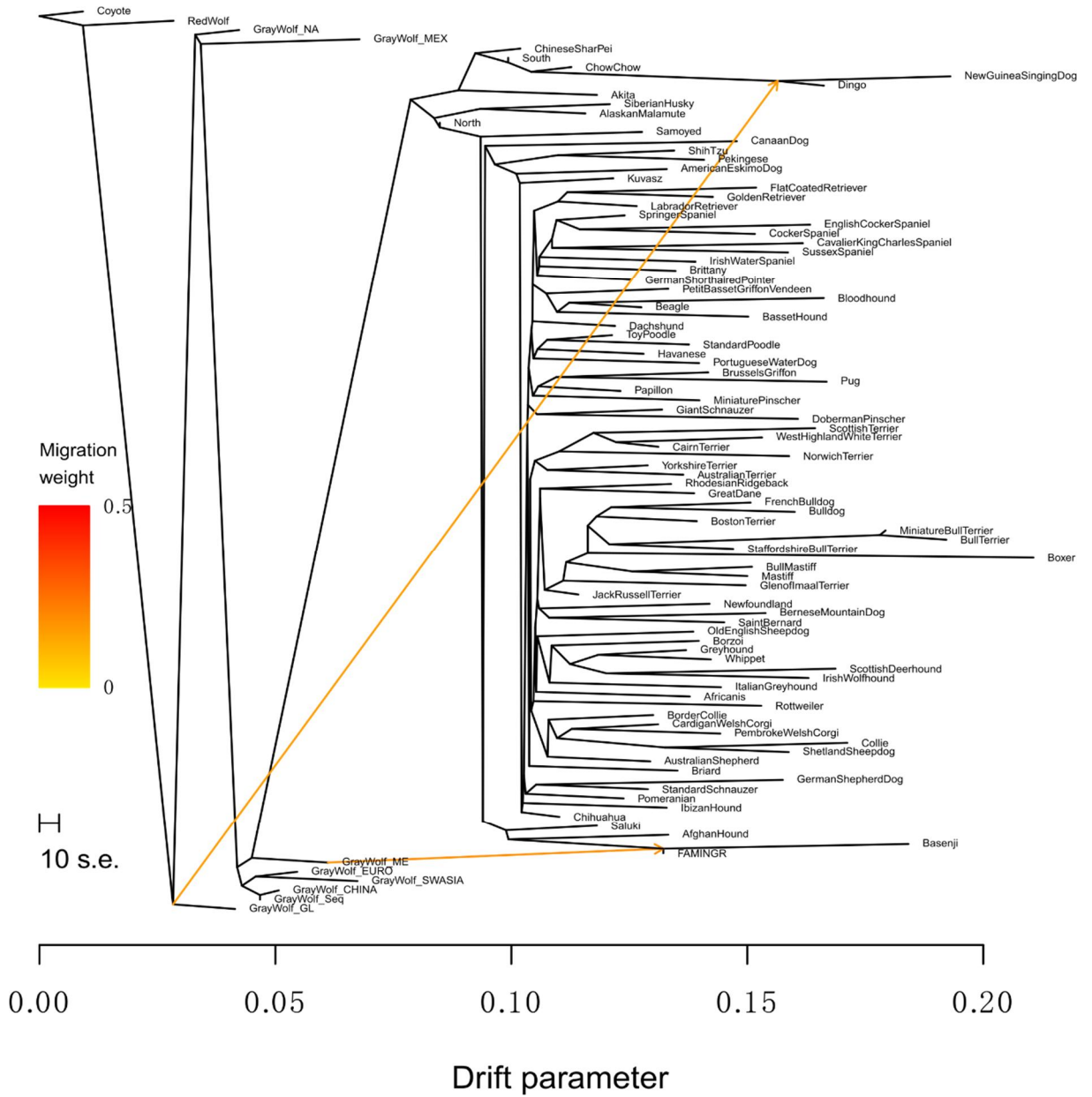
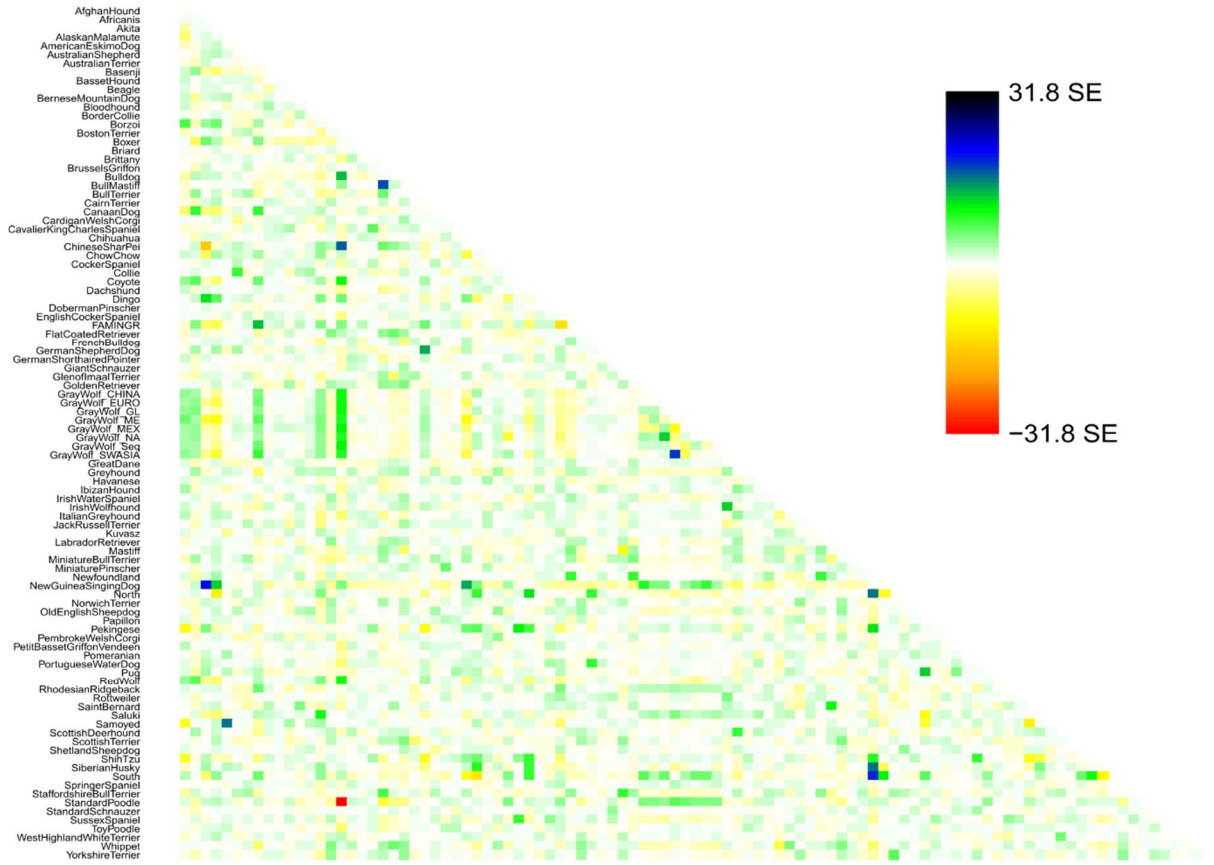


Supplementary Figure S4

A



B



- AfghanHound
- African
- Akita
- Alaskan Malamute
- American Eskimo Dog
- Australian Shepherd
- Australian Terrier
- Basenji
- Basset Hound
- Beagle
- Bernese Mountain Dog
- Bloodhound
- Border Collie
- Borzoi
- Boston Terrier
- Boxer
- Briard
- Brittany
- Brussels Griffon
- Bulldog
- Bull Mastiff
- Bull Terrier
- Cairn Terrier
- Canaan Dog
- Cavalier King Charles Spaniel
- Chihuahua
- Chinese Shar Pei
- Chow Chow
- Cocker Spaniel
- Collie
- Coyote
- Dachshund
- Dingo
- Doberman Pinscher
- English Cocker Spaniel
- FAM103
- Flat Coated Retriever
- French Bulldog
- German Shepherd Dog
- German Shorthaired Pointer
- Giant Schnauzer
- Glenn of Inishowen Terrier
- Golden Retriever
- Gray Wolf CHINA
- Gray Wolf EURO
- Gray Wolf GL
- Gray Wolf ME
- Gray Wolf MEX
- Gray Wolf NA
- Gray Wolf SEA
- Gray Wolf SWASIA
- Great Dane
- Greyhound
- Havanese
- Ibizan Hound
- Irish Water Spaniel
- Irish Wolfhound
- Italian Greyhound
- Jack Russell Terrier
- Kuvasz
- Labrador Retriever
- Mastiff
- Miniature Bull Terrier
- Miniature Pinscher
- Newfoundland
- New Guinea Singing Dog
- North
- Norwich Terrier
- Old English Sheepdog
- Papillon
- Pekingese
- Pembroke Welsh Corgi
- Petit Basset Griffon Vendéen
- Pomeranian
- Portuguese Water Dog
- Puli
- Red Wolf
- Rhodesian Ridgeback
- Rottweiler
- Saint Bernard
- Saluki
- Samoyed
- Scottish Deerhound
- Scottish Terrier
- Shetland Sheepdog
- Shih Tzu
- Siberian Husky
- South
- Springer Spaniel
- Staffordshire Bull Terrier
- Standard Poodle
- Standard Schnauzer
- Sussex Spaniel
- Toy Poodle
- West Highland White Terrier
- Whippet
- Yorkshire Terrier

Supplementary Information, Figure S4. TreeMix analysis using the combined genotype data

This figure shows the TreeMix analysis allowing two migratory tracks. The panel A is the phylogenetic relationship among all the canids with two migration tracks. The first migration track is between the African village dogs (A)/Basenji and wolves. The second migration is between wolves and the Dingo/New Guinea Singing dog and wolves. The panel B is the residual plot of the fitted model.