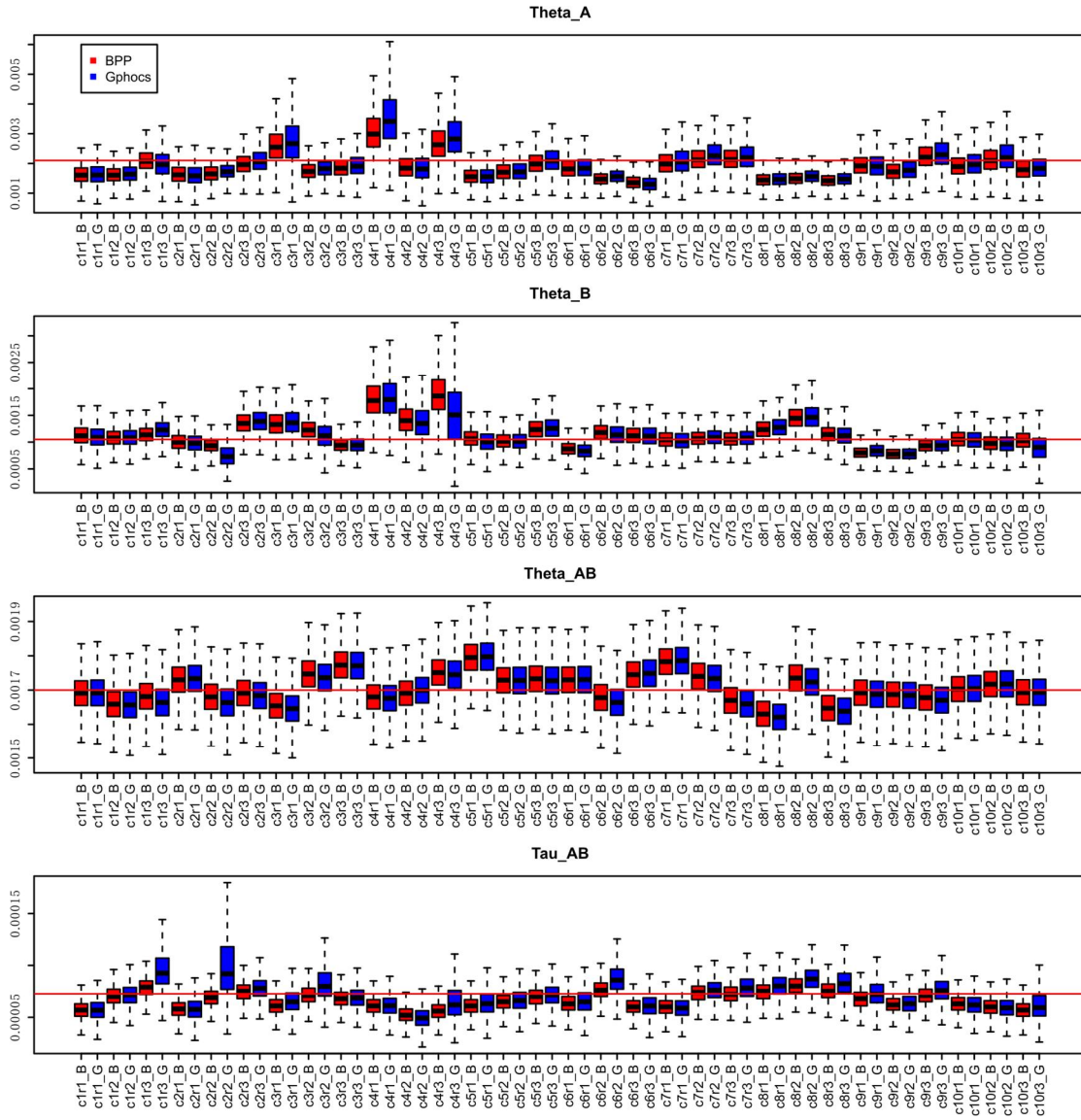


Supplementary Figure S8



Supplementary Information, Figure S8. Parameter estimates under a wide variety of demographic simulations

On the x axis, $\text{cir}_j_{B/G}$, i is the difference in the demographic scenarios, j is the replicate number of the simulation (each case was simulated with three replicates). The B/G is the BPP or G-PhoCS run. Theta_A is the estimated $\theta(4N\mu)$ for the first population, Theta_B is for the second population and Theta_{AB} is the ancestral population. Tau_{AB} is the divergence time between the two populations. The baseline value of the simulation is shown in the red horizontal line. For the Tau_{AB} panel, the red line is the true value in all the simulations.