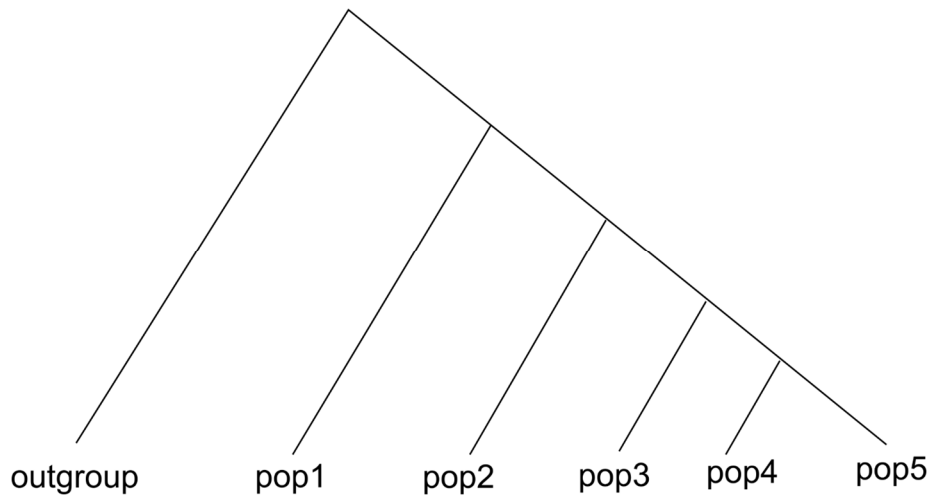
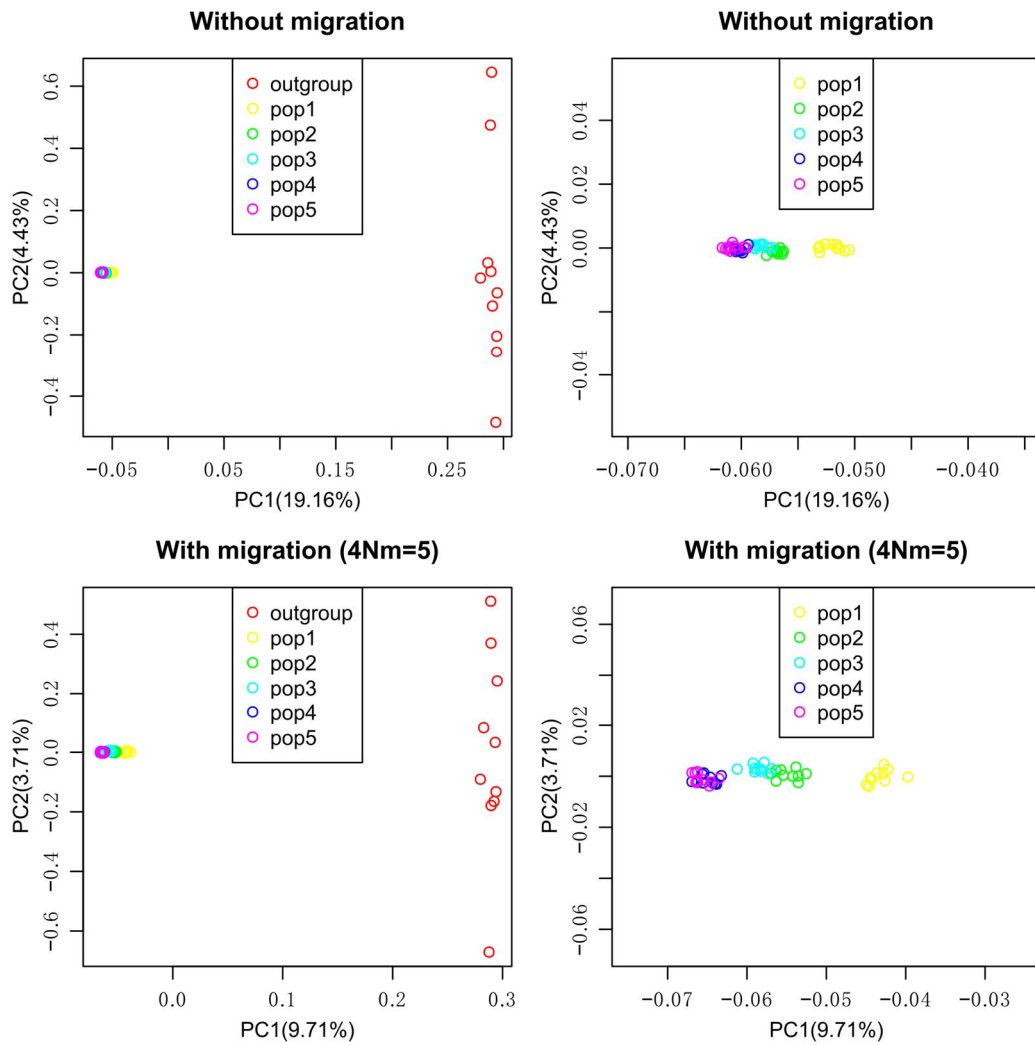


Supplementary Figure S10

A



B



Supplementary Information, Figure S10. Serial founder models can create patterns observed in the PCA analysis

A) The cartoon illustrates the serial founder model. The ms string for the simulation is
ms 120 50000 -s 1 -I 6 20 20 20 20 20 20 -n 1 1 -n 2 0.5 -n 3 0.25 -n 4 0.25 -n 5 0.2 -n
6 0.2 -m 1 2 \$mig -m 1 3 \$mig -m 1 4 \$mig -m 1 5 \$mig -m 1 6 \$mig -m 2 1 \$mig -m
3 1 \$mig -m 4 1 \$mig -m 5 1 \$mig -m 6 1 \$mig -en 0.0075 6 0.05 -ej 0.008 6 5 -en
0.0115 5 0.05 -ej 0.012 5 4 -en 0.0135 4 0.05 -ej 0.014 4 3 -en 0.015 3 0.05 -ej 0.015625
3 2 -en 0.015625 2 0.05 -ej 0.034375 2 1

B) PCA for the simulation with/without migration. When there is migration, the migration rate is set to $4Nm=5$. The left panels are the overall PCA plot and the right panels are for the focal group.