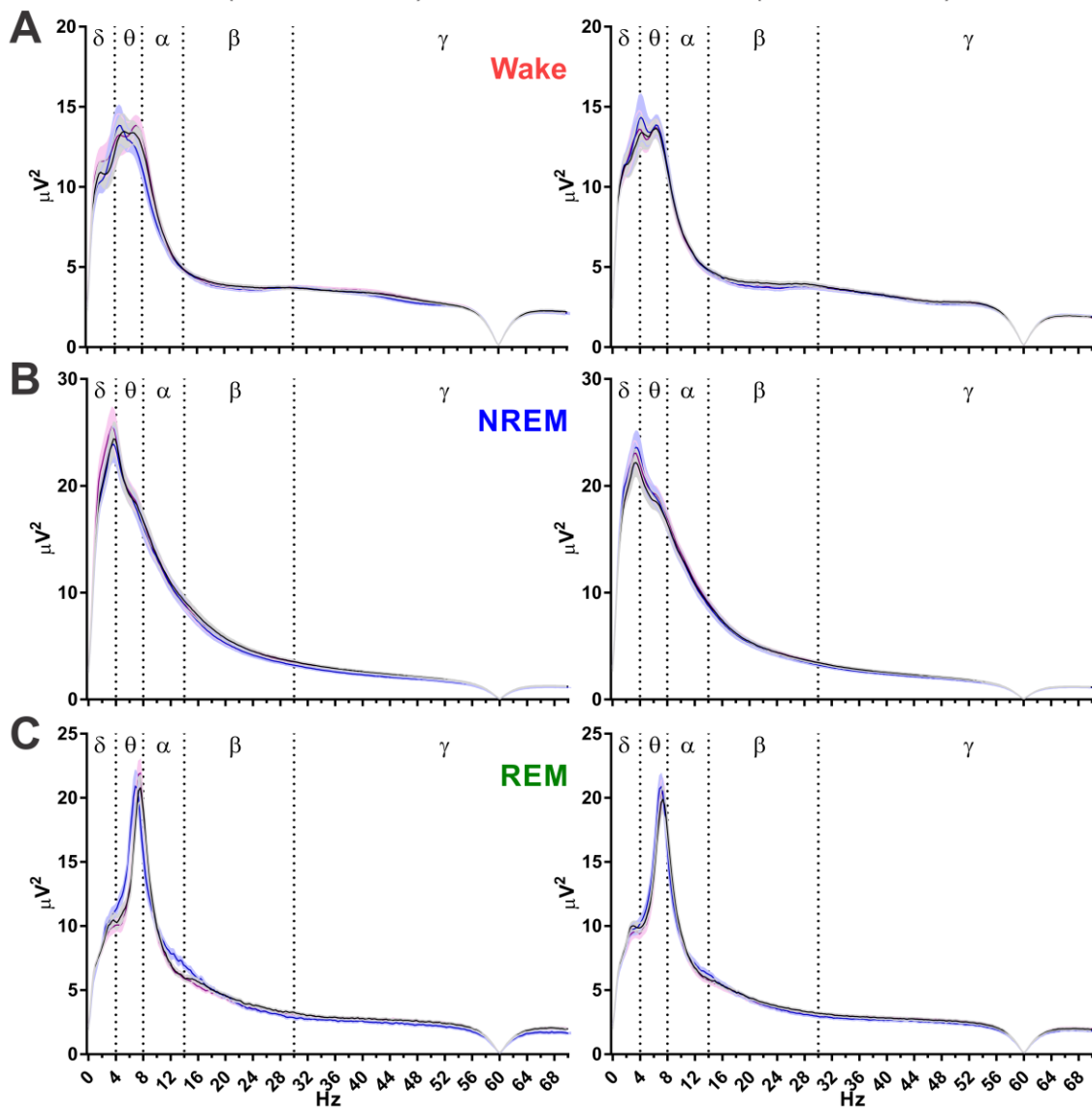


### Dark Photoperiod (ZT 12:00 → 23:59)

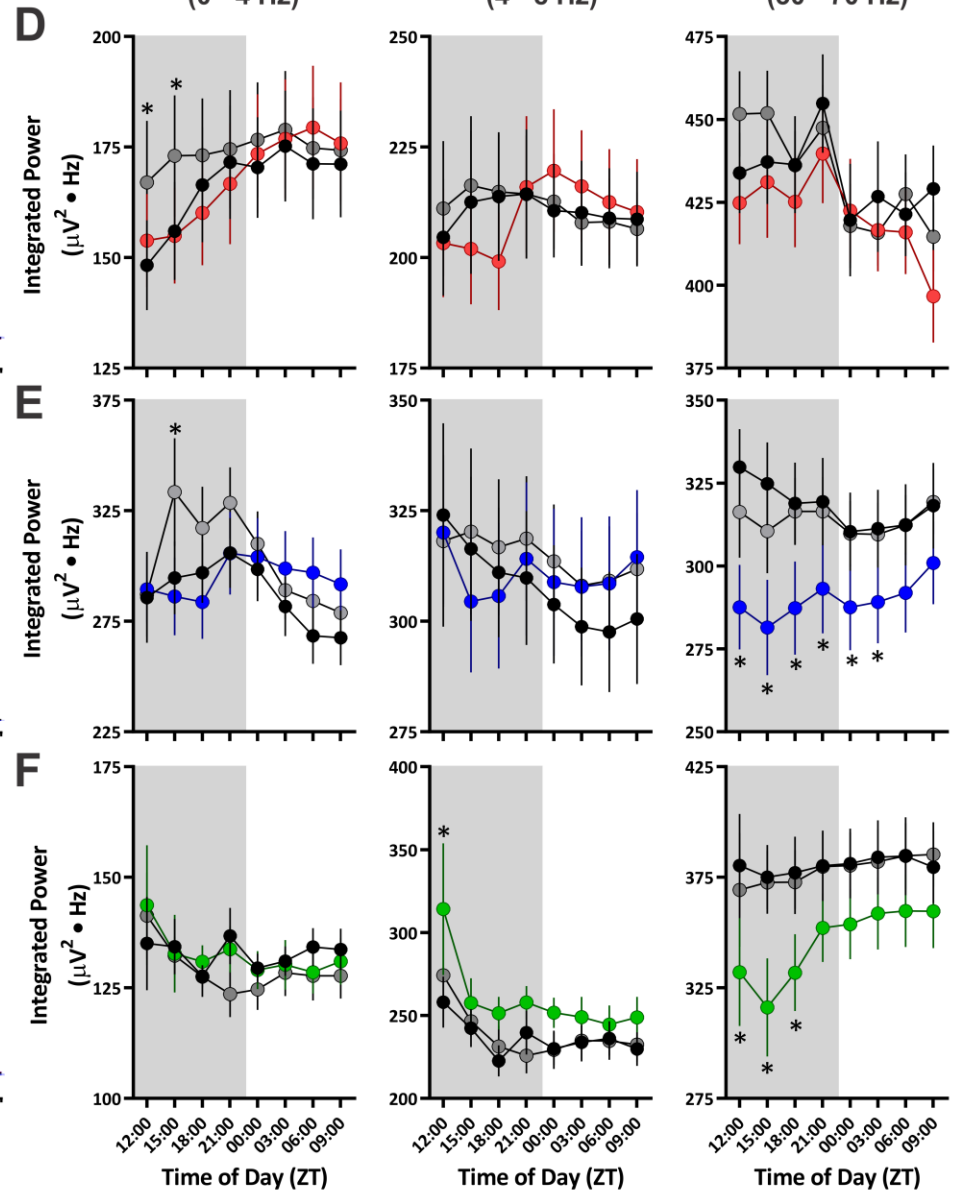
### Light Photoperiod (ZT 00:00 → 12:59)



### Delta (0 - 4 Hz)

### Theta (4 - 8 Hz)

### Gamma (30 - 70 Hz)



— Vehicle    — 10.0 mg/kg AM3506    — Recovery (no injection)

● Vehicle    ● 10.0 mg/kg AM3506    ● Recovery (no injection)