

Supplementary figures for

The contribution of non-catalytic carbohydrate binding modules to the activity lytic polysaccharide monooxygenases

Lucy I Crouch^{1¶}, Aurore Labourel^{1¶}, Paul H. Walton², Gideon J. Davies² and Harry J. Gilbert^{1*}

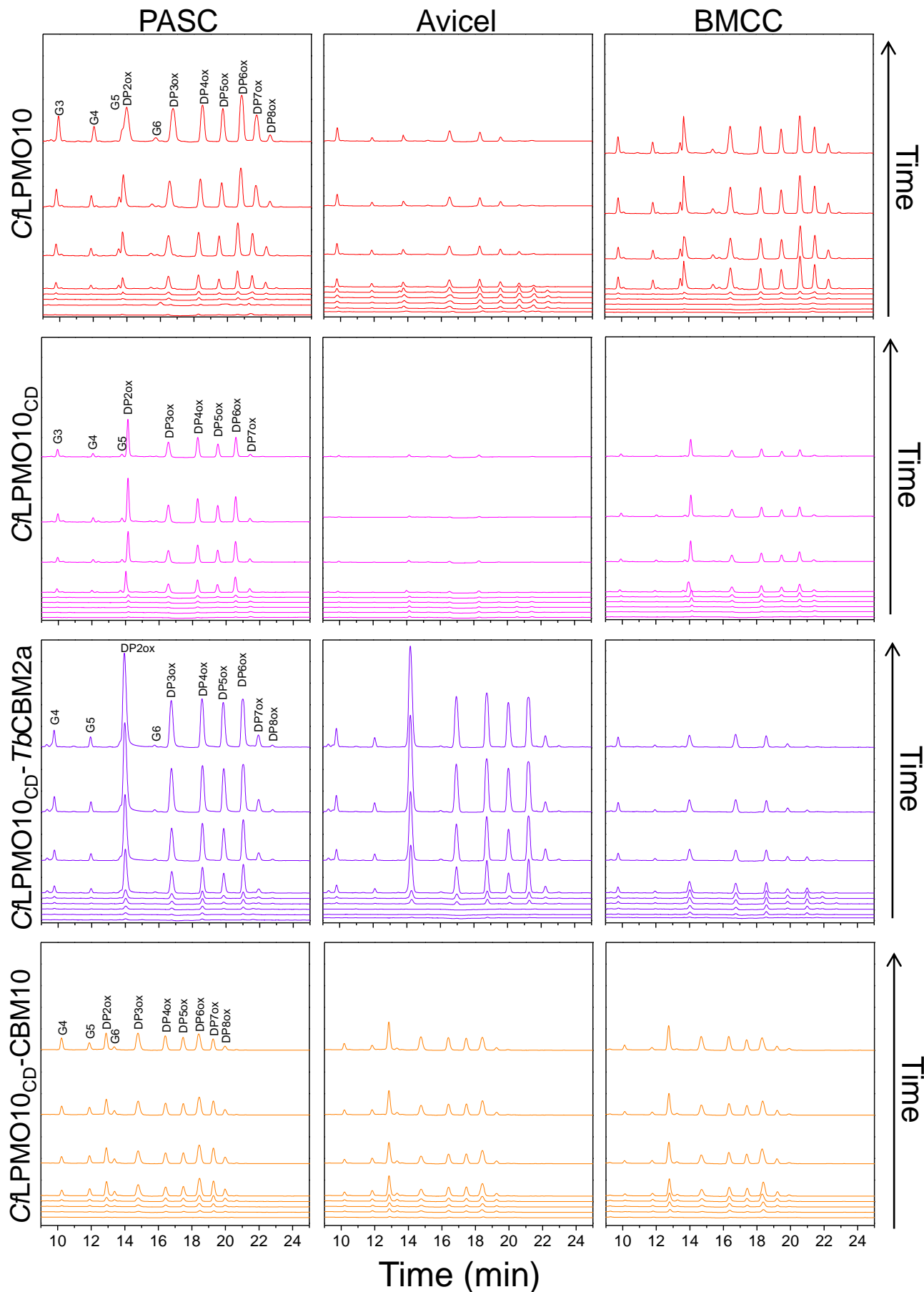


Fig. S1. HPLC analysis of the soluble products produced from three cellulose substrates by the different *C. fimi* LPMOs. A chromatogram is provided for each time point corresponding to the time points indicated to in Figure 7, with the earliest at the bottom and the latest at the top of each panel.

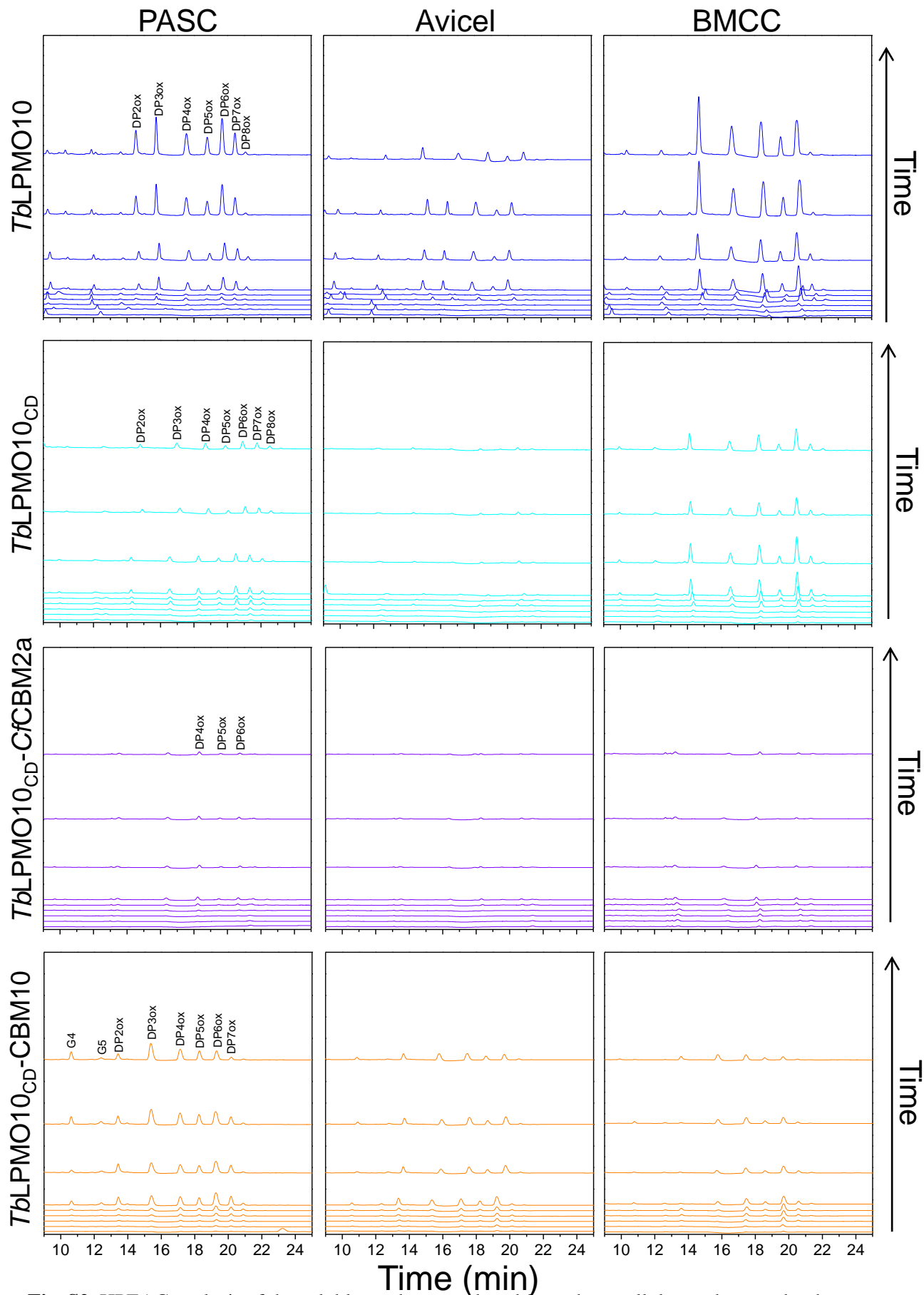


Fig. S2. HPLC analysis of the soluble products produced from three cellulose substrates by the different *T. bispora* constructs. A chromatogram is provided for each time point corresponding to the time points indicated to in Figure 7, with the earliest at the bottom and the latest at the top of each panel.

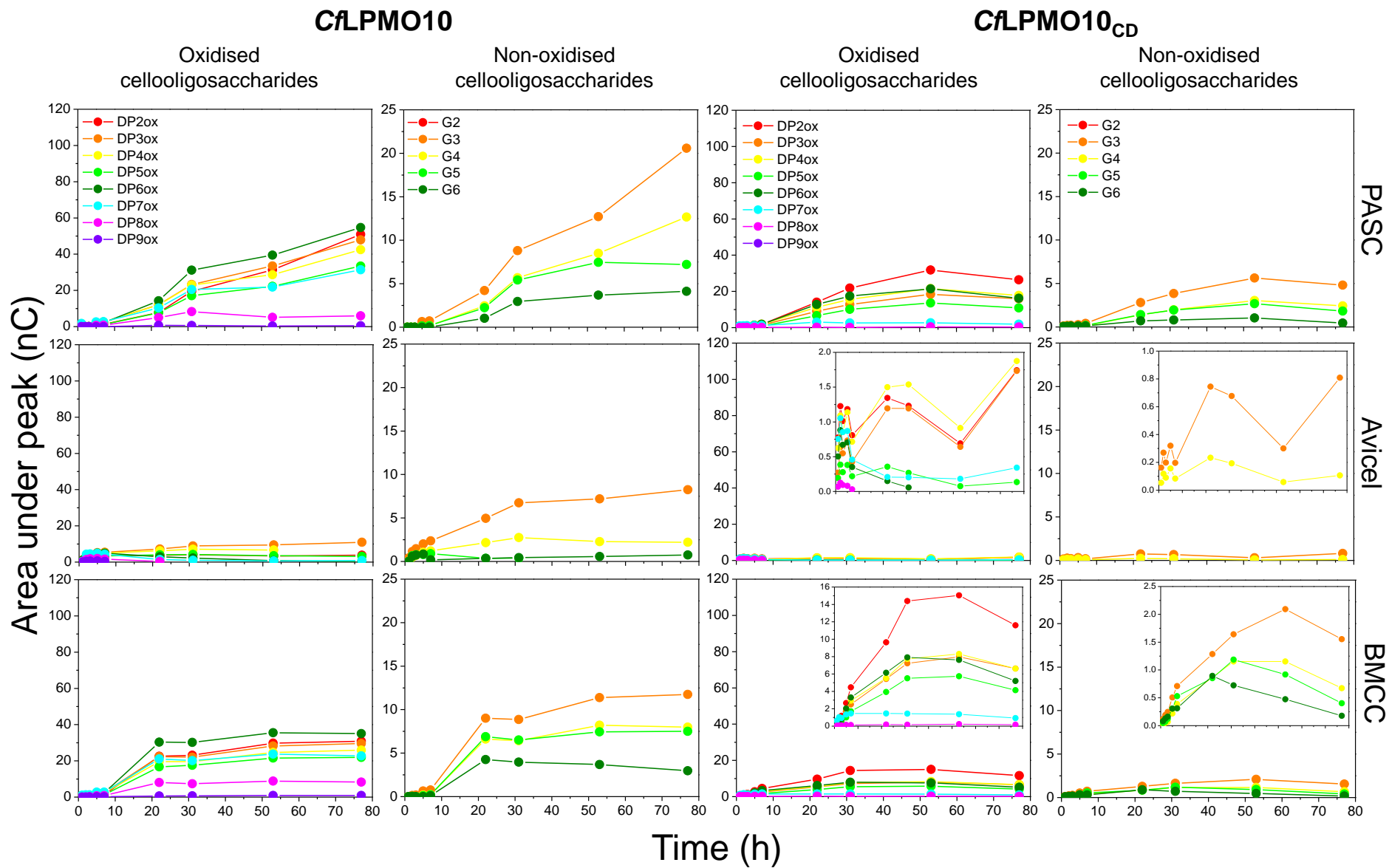


Fig. S3. Quantification of the soluble oxidised and non-oxidised products released from different substrates by *CflPMO10* and *CflPMO10_{CD}*.

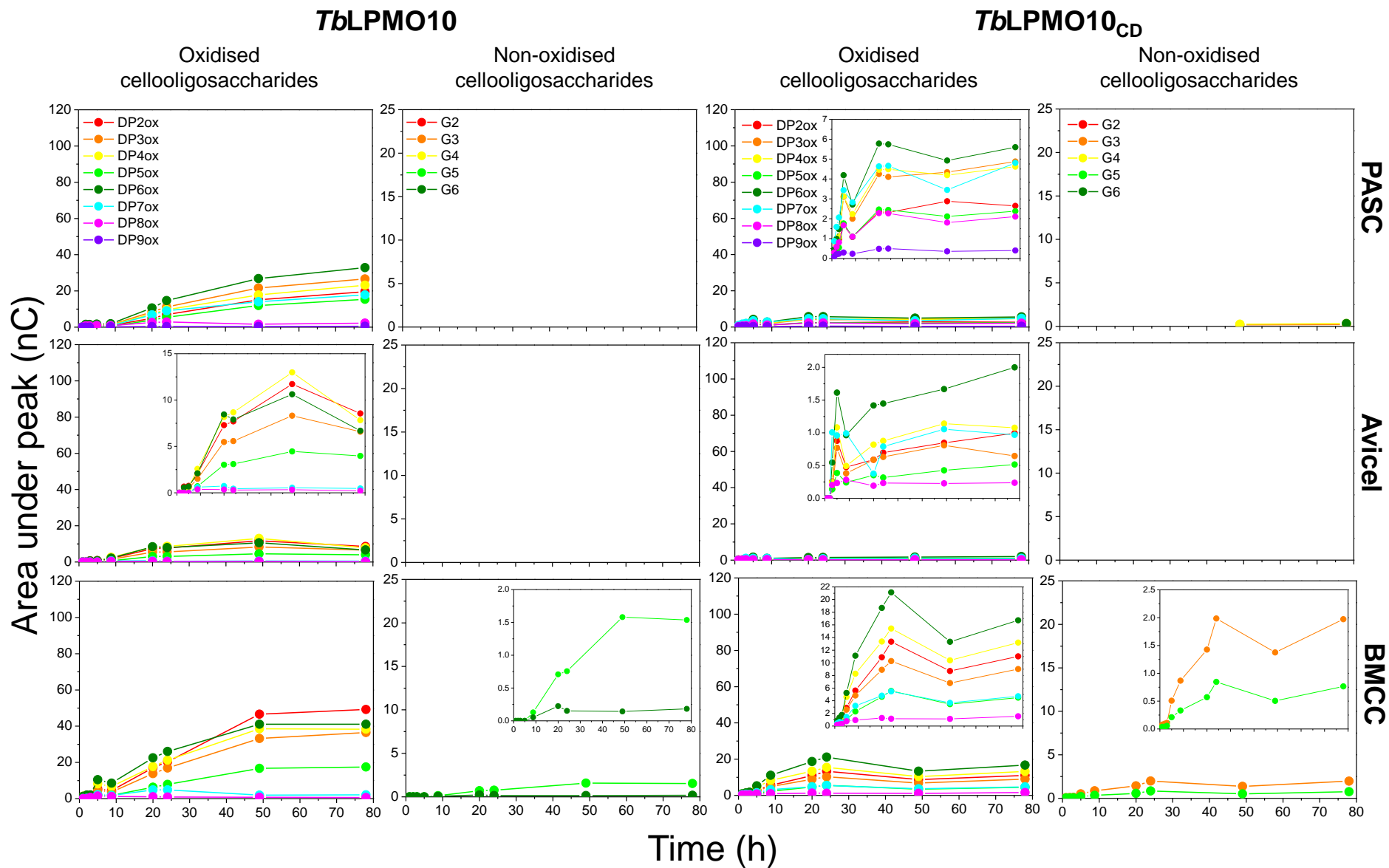


Fig. S4. Quantification of the soluble oxidised and non-oxidised products released from different substrates by *TbLPMO10* and *TbLPMO10_{CD}*.

*Cf*LPMO10-*Tb*CBM2a

*Tb*LPMO10-*Cf*CBM2a

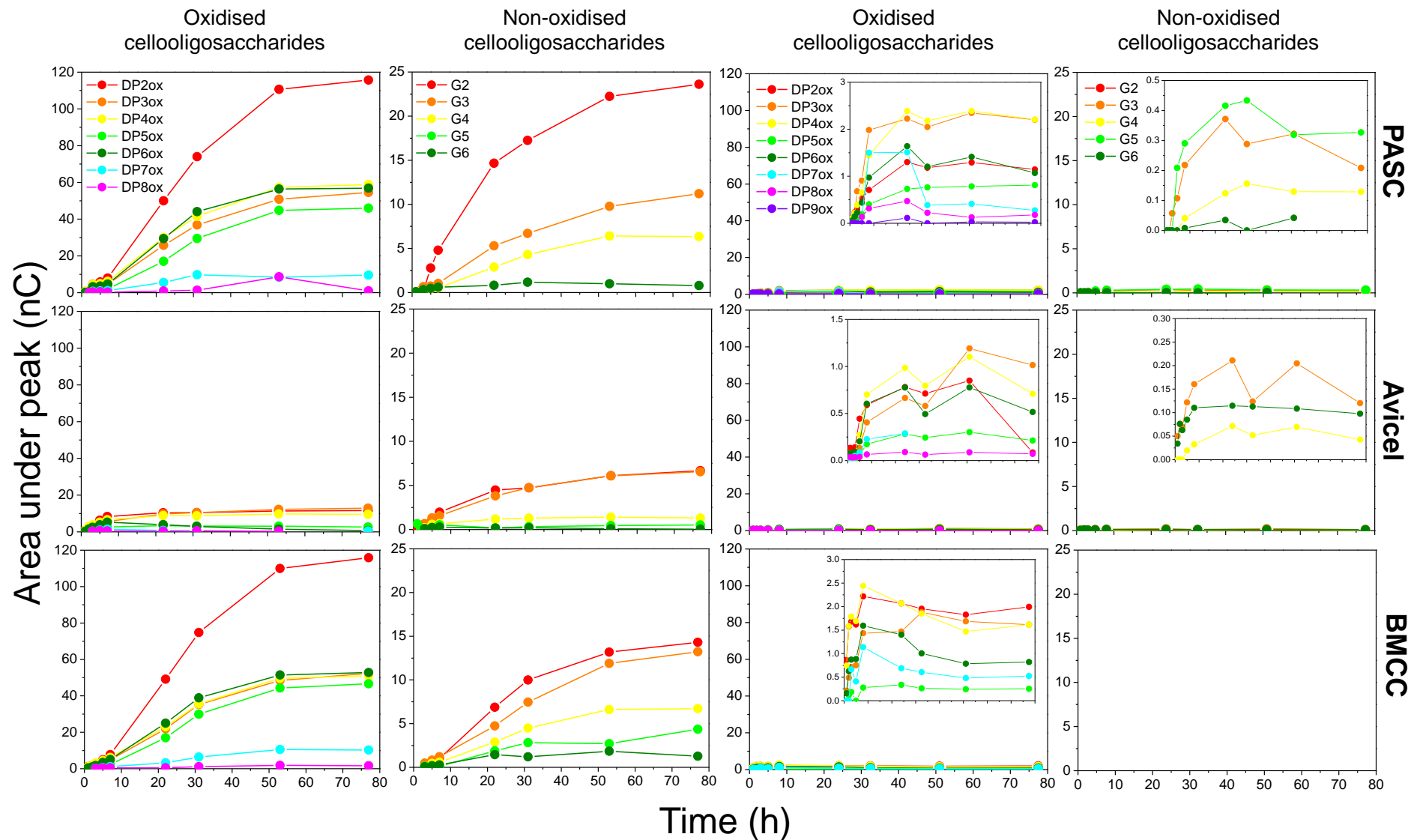


Fig. S5. Quantification of the soluble oxidised and non-oxidised products released from different substrates by *Cf*LPMO10-*Tb*CBM2a and *Tb*LPMO10-*Cf*CBM2a.

*Cf*LPMO10-CBM10

*Tb*LPMO10-CBM10

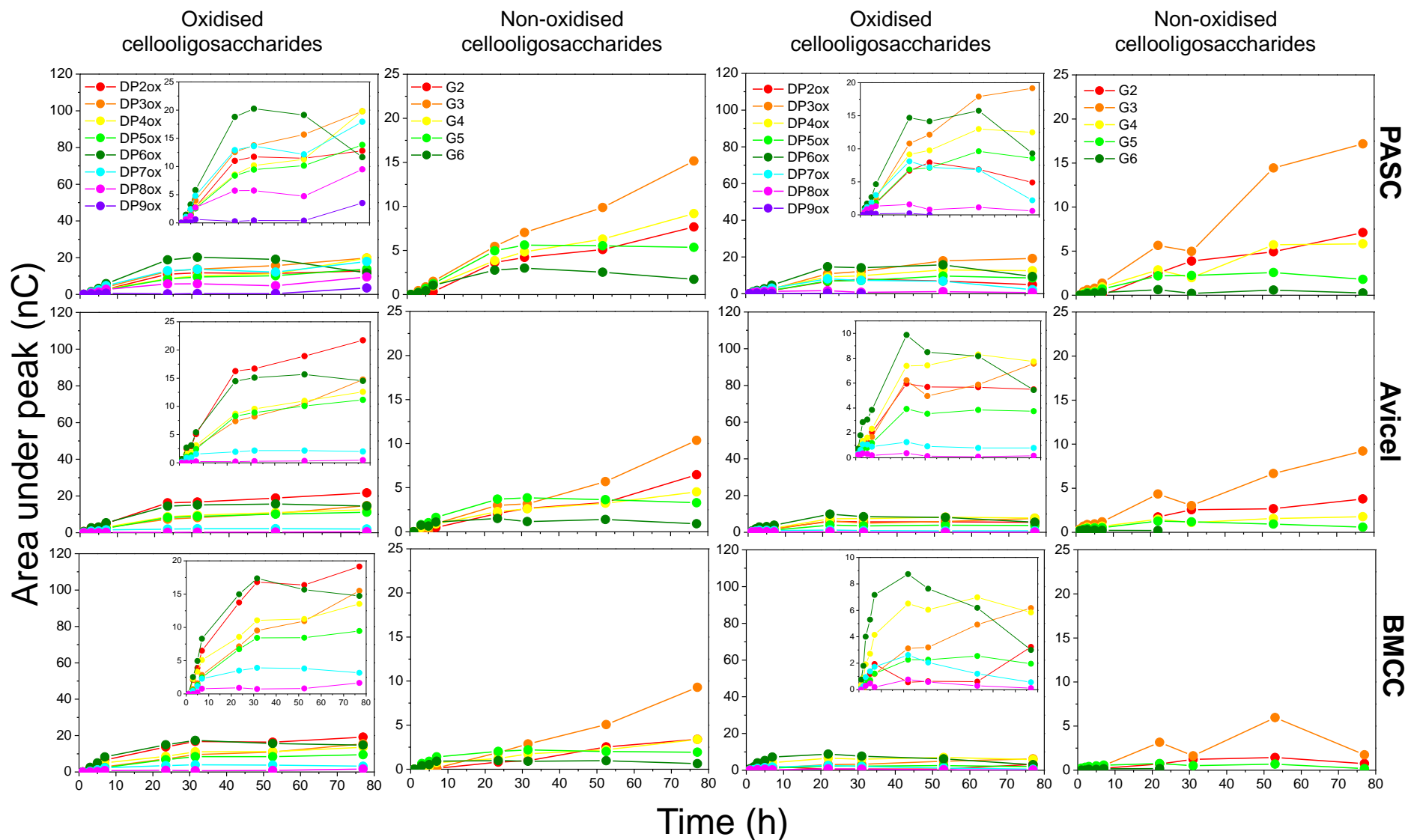


Fig. S6. Quantification of the soluble oxidised and non-oxidised products released from different substrates by *Cf*LPMO10-CBM10 and *Tb*LPMO10-CBM10.