

Figure S1

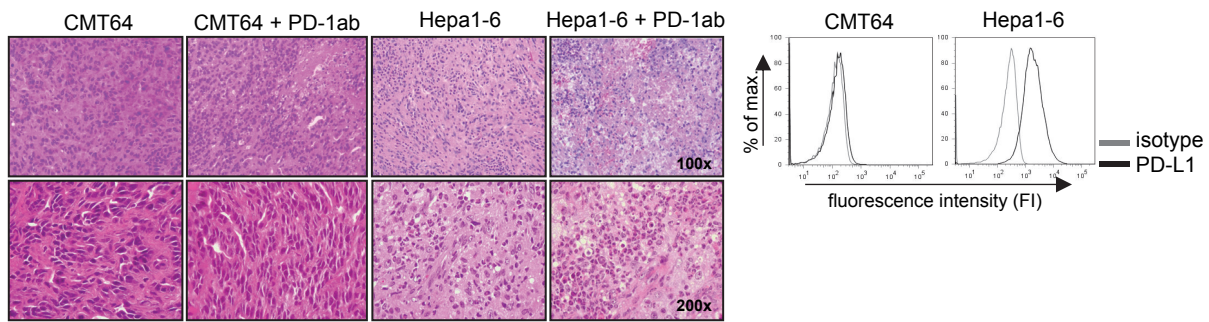


Fig. S1 CMT64 cells are resistant to PD-1 immunotherapy and do not express PD-L1. Mice with s.c. CMT64 were treated twice weekly with α -PD-1 antibody, the PD-1 sensitive cell line Hepa1-6 served as control. Two weeks later, tumors were harvested and histological analysis of the tumors was performed to investigate lymphocytic infiltration. HE sections of treated and untreated mice are shown on the left side (100-fold magnification, upper row, and 200-fold magnification, bottom row). Additionally, the PD-L1-status of CMT64 and Hepa1-6 cells was investigated by flow cytometry (right side).