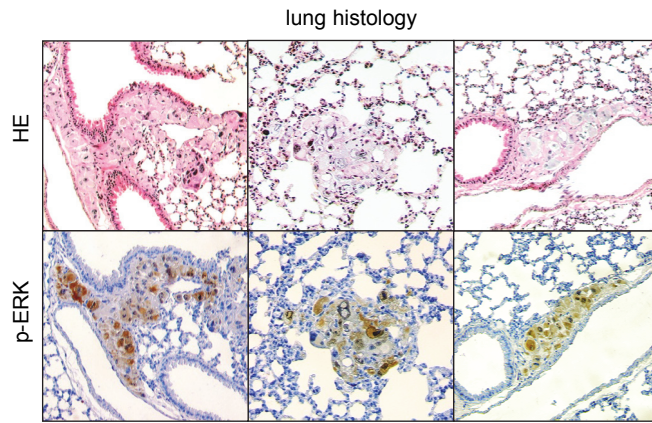


Figure S5



**Fig. S5** Histologic tracking of lung metastastasis in the transgenic model of cholangiocarcinoma. 42 days after electroporation and induction of the primary tumor, lung-tissue was harvested and subjected to (immuno-)histochemical analysis to investigate dissemination to the lung. Representative metastases are shown by HE-stained sections (upper row) and by phospho-ERK-staining (bottom) at 100x magnification.