

CD300c is uniquely expressed on CD56^{bright} Natural Killer Cells and differs from CD300a upon ligand recognition.

Milena Dimitrova^a, Olatz Zenarruzabeitia^{b,c}, Francisco Borrego^{b,c,d} and Venkateswara R. Simhadri^{a,1}.

^aDivision of Biotechnology Review and Research-I, Office of Biotechnology Products Review and Research, CDER, Food and Drug Administration, USA. ^bImmunopathology Group, BioCruces Health Research Institute, Barakaldo, Spain. ^cImmunotherapy Group, Basque Center for Transfusion and Human Tissues, Galdakao, Spain. ^dIkerbasque, Basque Foundation for Science, Bilbao, Spain.

¹Corresponding author: Dr. Venkateswara R. Simhadri, U.S. Food and Drug Administration, U.S.A. E-mail: venkateswara.simhadri@fda.hhs.gov

Supplementary Information

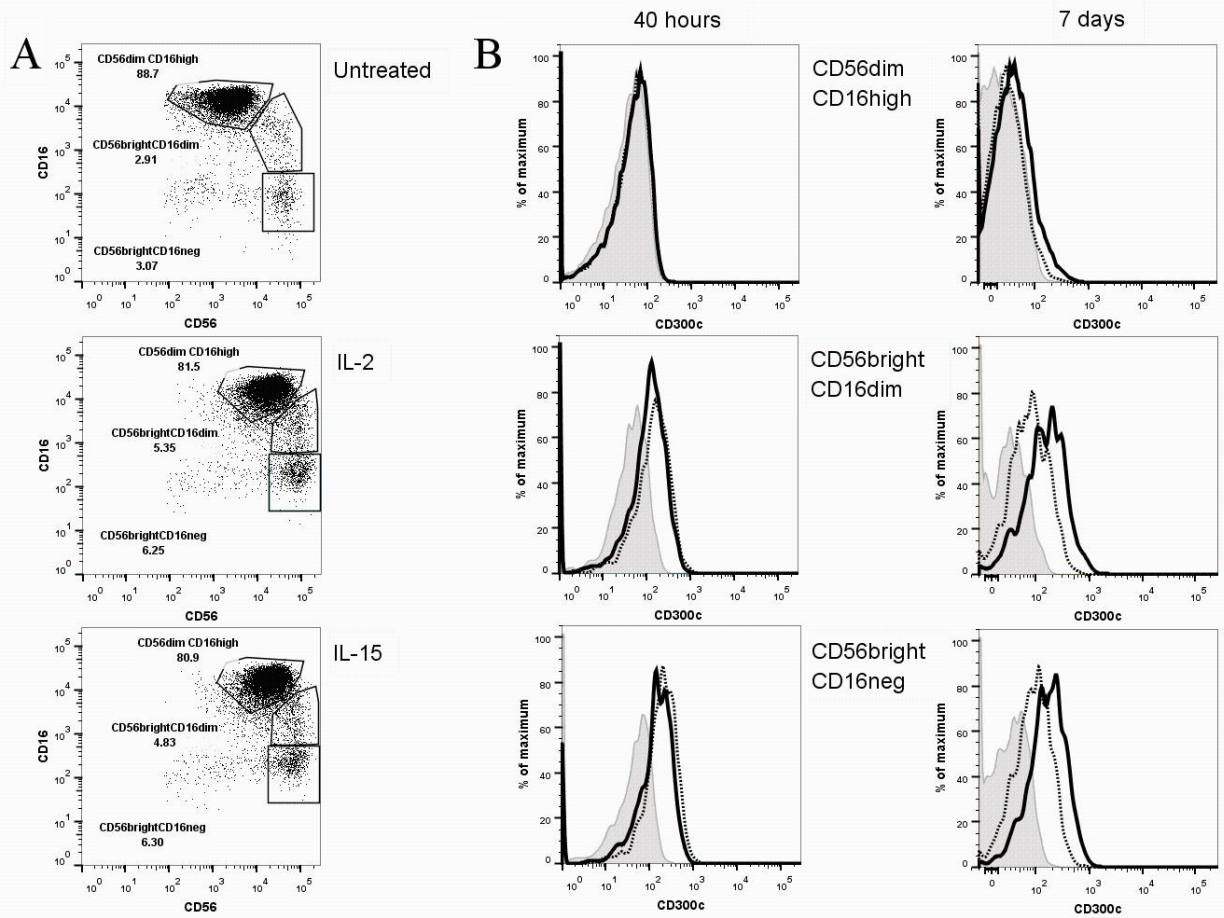


Figure legend: Human NK cells were purified from healthy donor and stimulated with the cytokines IL-2 and IL-15. Flow cytometric analyses were performed after 40 hours and 7 days of stimulation.

- (A) Gating strategy of all the three conditions (untreated, IL-2 and IL-15) showing the three different subsets of NK cells ($CD56^{\text{dim}}CD16^{\text{high}}$, $CD56^{\text{bright}}CD16^{\text{dim}}$ and $CD56^{\text{bright}}CD16^{\text{neg}}$).
- (B) Expression of CD300c on various the three NK cell subsets at 40 hours (left column) and 7 days (right column). Shaded histograms (untreated), thick black line (IL-2 treated) and dotted black line (IL-15 treated).