

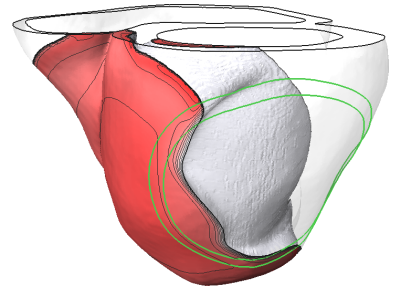
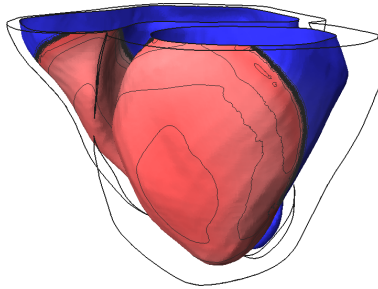
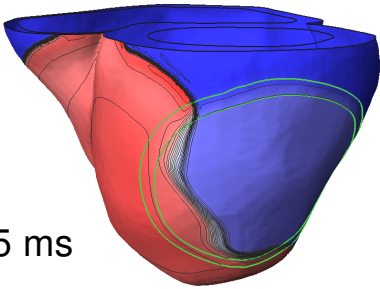
# No $I_{Kr}$ reduction

Epicardial surface

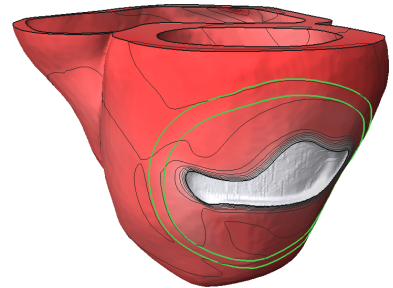
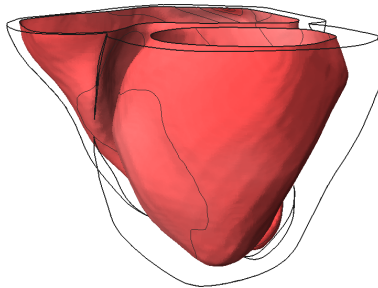
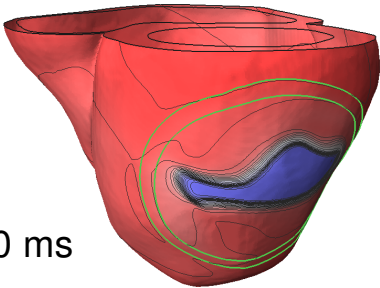
Endocardial surface

$V_m > -20$  [mV]

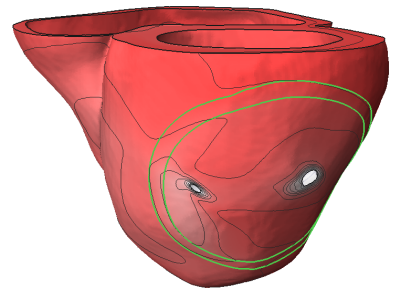
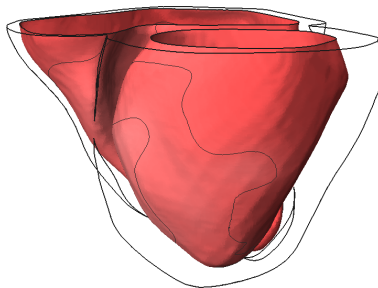
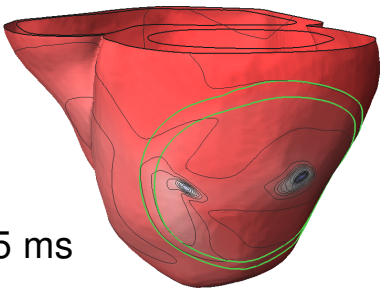
1295 ms

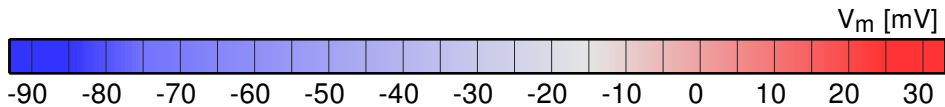


1360 ms



1385 ms





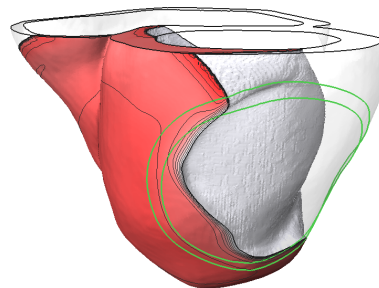
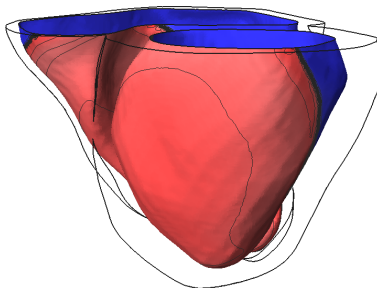
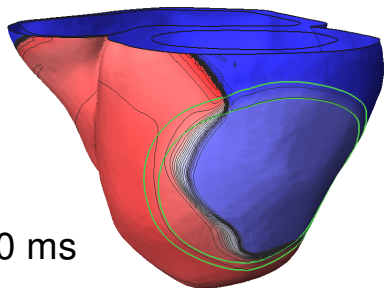
# 30% $I_{kr}$ reduction

Epicardial surface

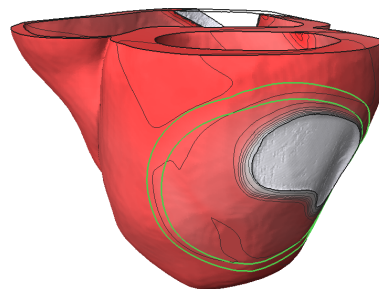
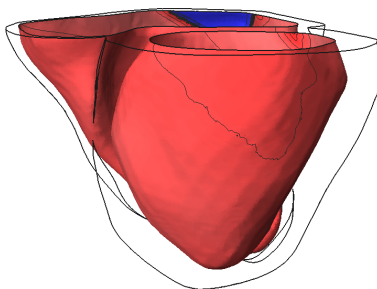
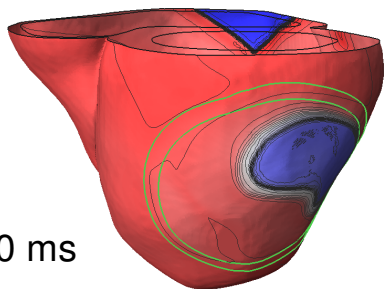
Endocardial surface

$V_m > -20$  [mV]

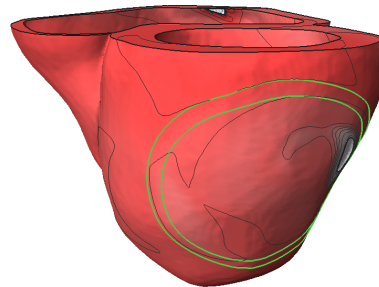
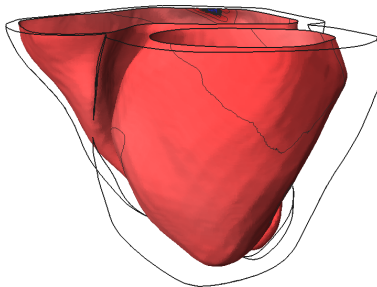
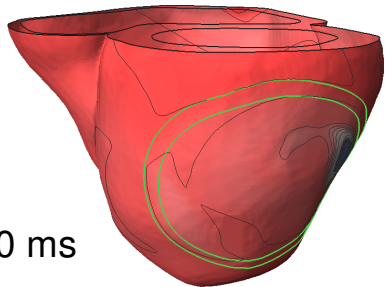
1300 ms

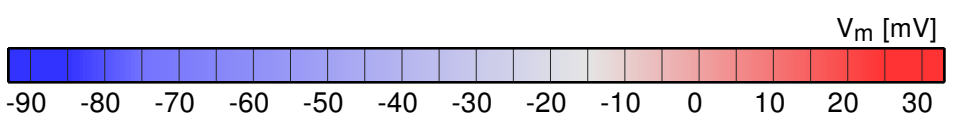


1340 ms



1350 ms





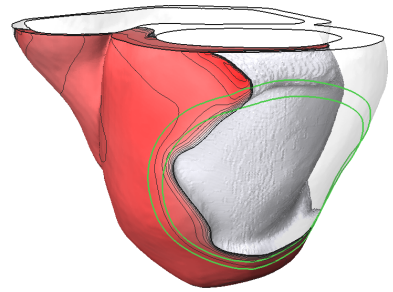
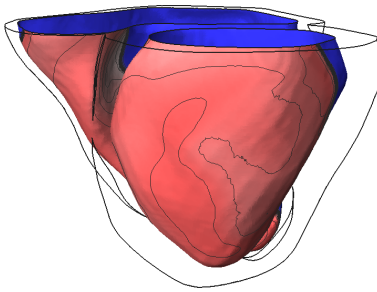
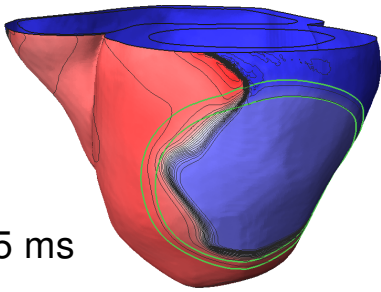
# 50% $I_{Kr}$ reduction

Epicardial surface

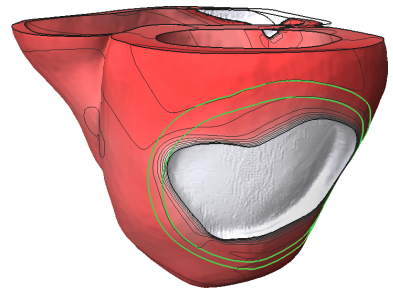
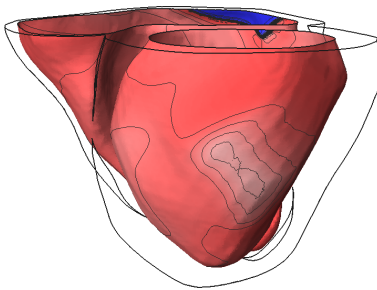
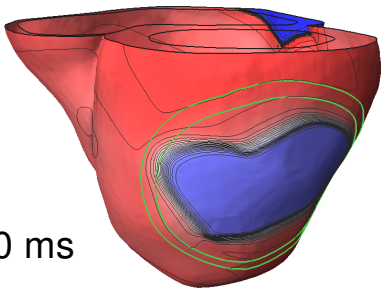
Endocardial surface

$V_m > -20$  [mV]

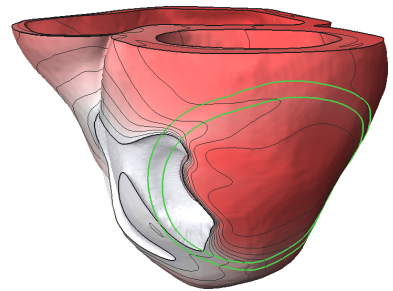
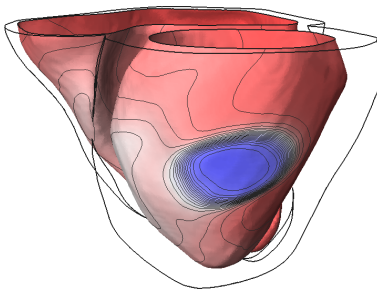
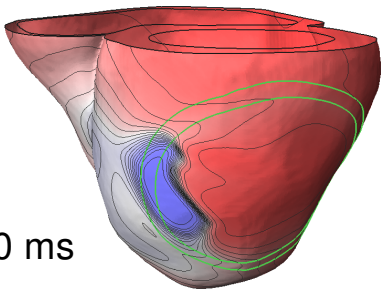
1315 ms



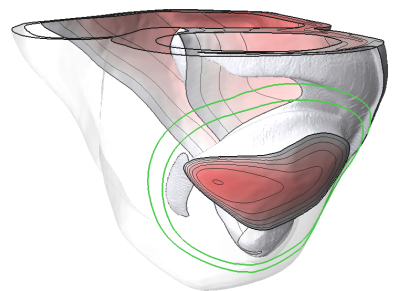
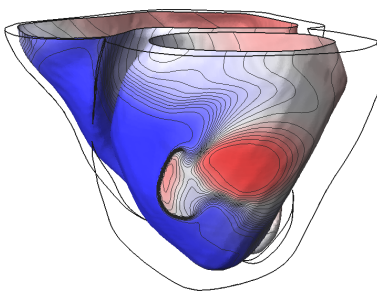
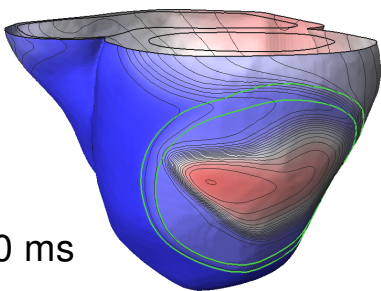
1360 ms



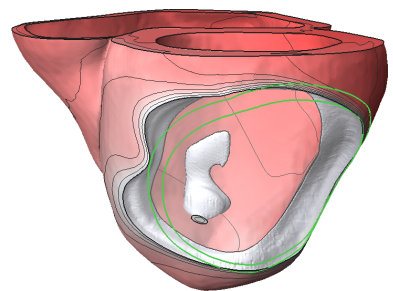
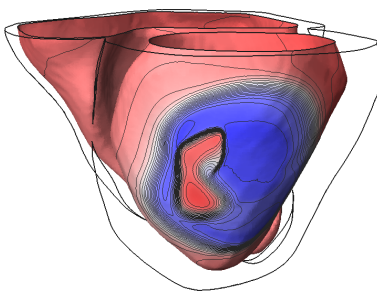
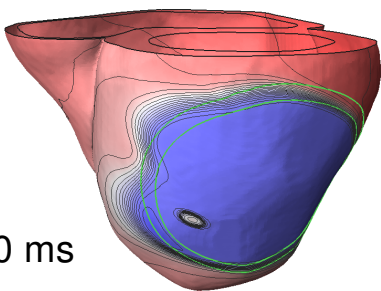
1460 ms



1580 ms



1810 ms



1900 ms

