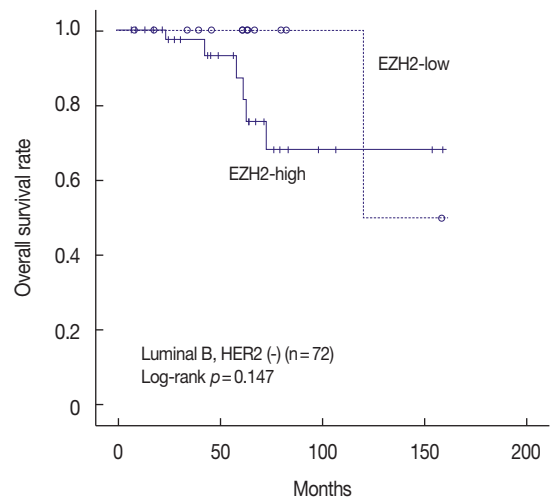
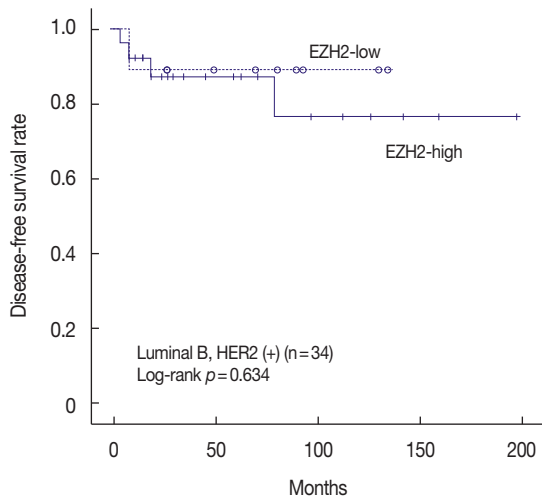


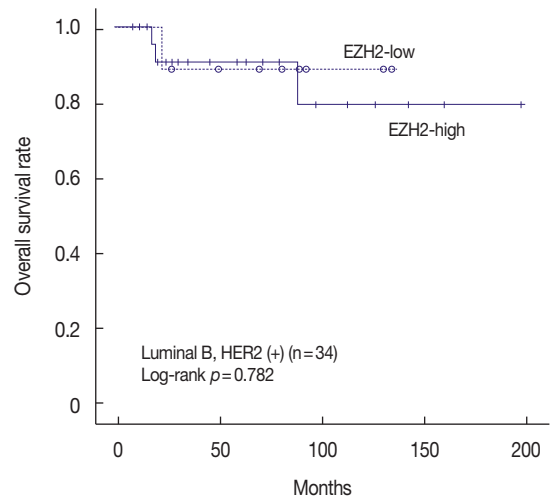
A



B

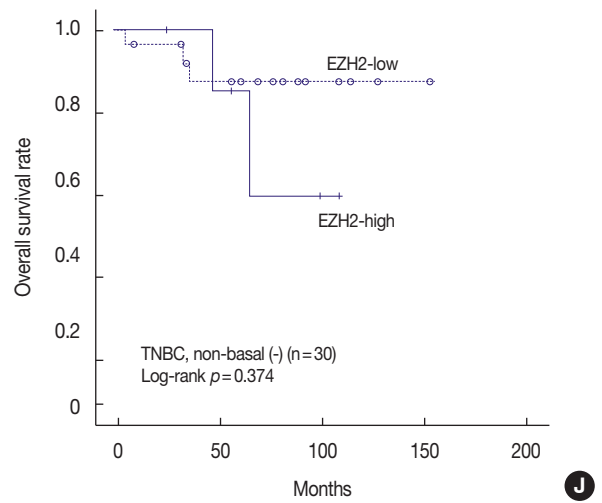
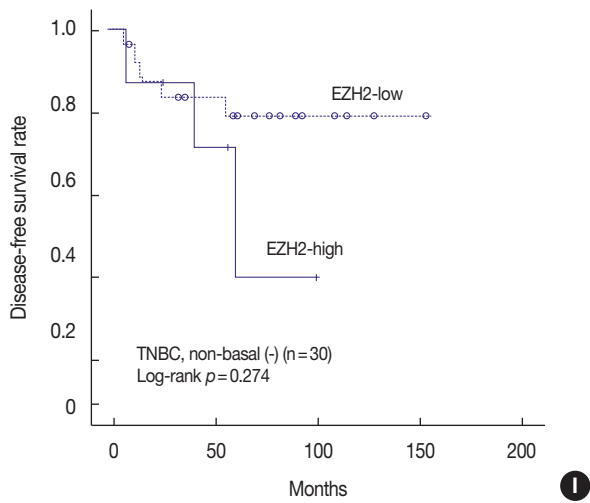
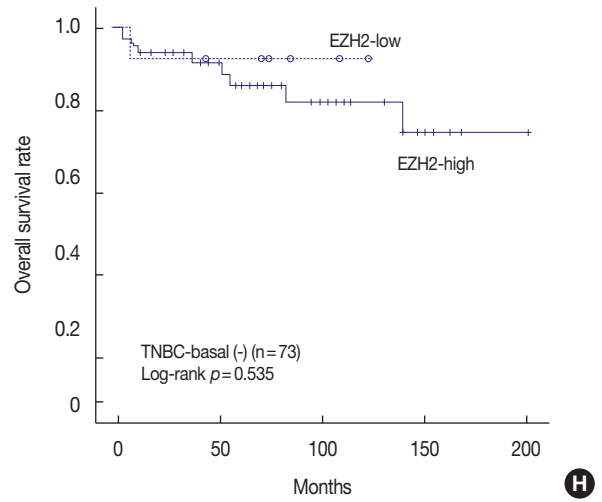
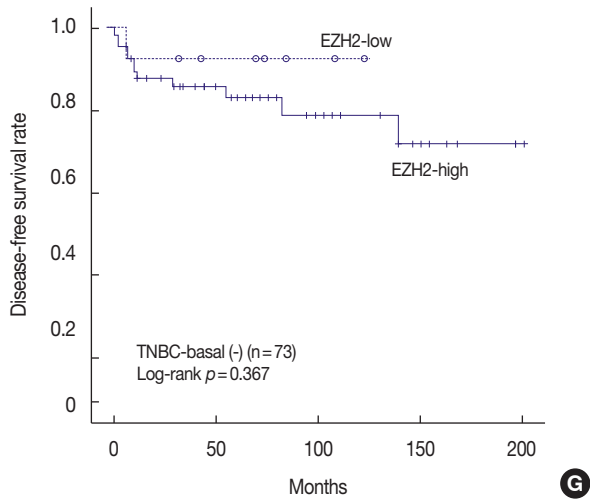
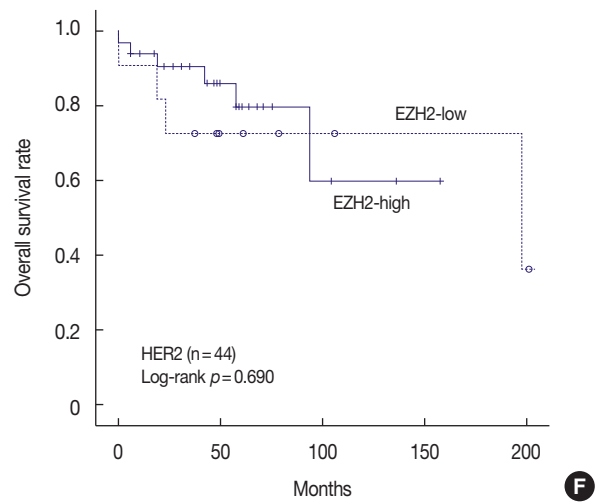
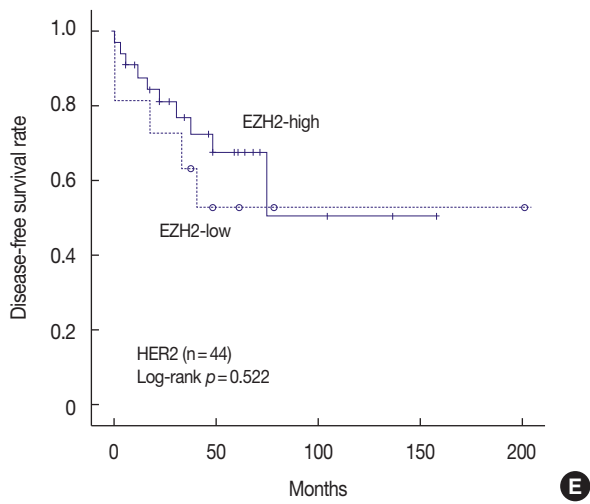


C



D

Supplementary Figure 1. Kaplan-Meier survival curve for enhancer of zeste homologue 2 (EZH2) according to the luminal B, human epidermal growth factor receptor 2 (HER2), and triple-negative breast cancer (TNBC) subtype. (A) Disease-free survival (DFS) ($p=0.386$) and (B) overall survival (OS) ($p=0.147$) in patients with in HER2-negative luminal B type ($n=72$). (C) DFS ($p=0.634$) and (D) OS ($p=0.782$) in patients with in HER2-positive luminal B type ($n=34$).



Supplementary Figure 1. Continued. (E) DFS ($p=0.522$) and (F) OS ($p=0.690$) in patients with in HER2 type (n=44). (G) DFS ($p=0.367$) and (H) OS ($p=0.535$) in patients with in TNBC basal type (n=73). (I) DFS ($p=0.274$) and (J) OS ($p=0.374$) in patients with in TNBC non-basal type (n=30).