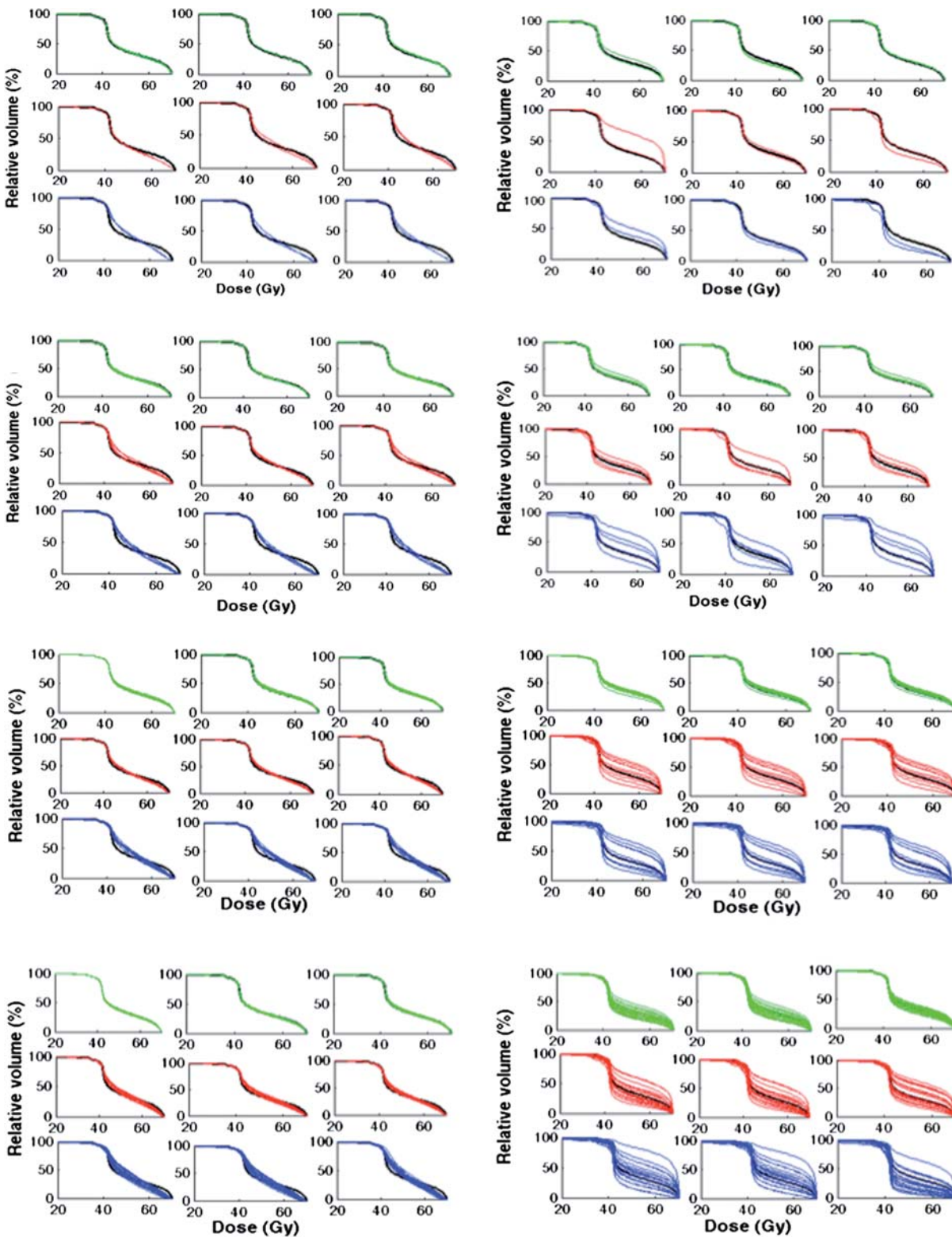


Supplementary material for Thor M, et al. Statistical simulations to estimate motion-inclusive dose-volume histograms for prediction of rectal morbidity following radiotherapy, *Acta Oncologica*, 2013;52:666–675



Supplementary Figure 1. Three repeat simulations of random (left) and systematic (right) isotropic motion for different motion magnitudes (green- $\sigma = 0.2$, red- $\sigma = 0.5$ and blue- $\sigma = 0.8$) using, from top to bottom, 2, 5, 10 and 20 number of trials.