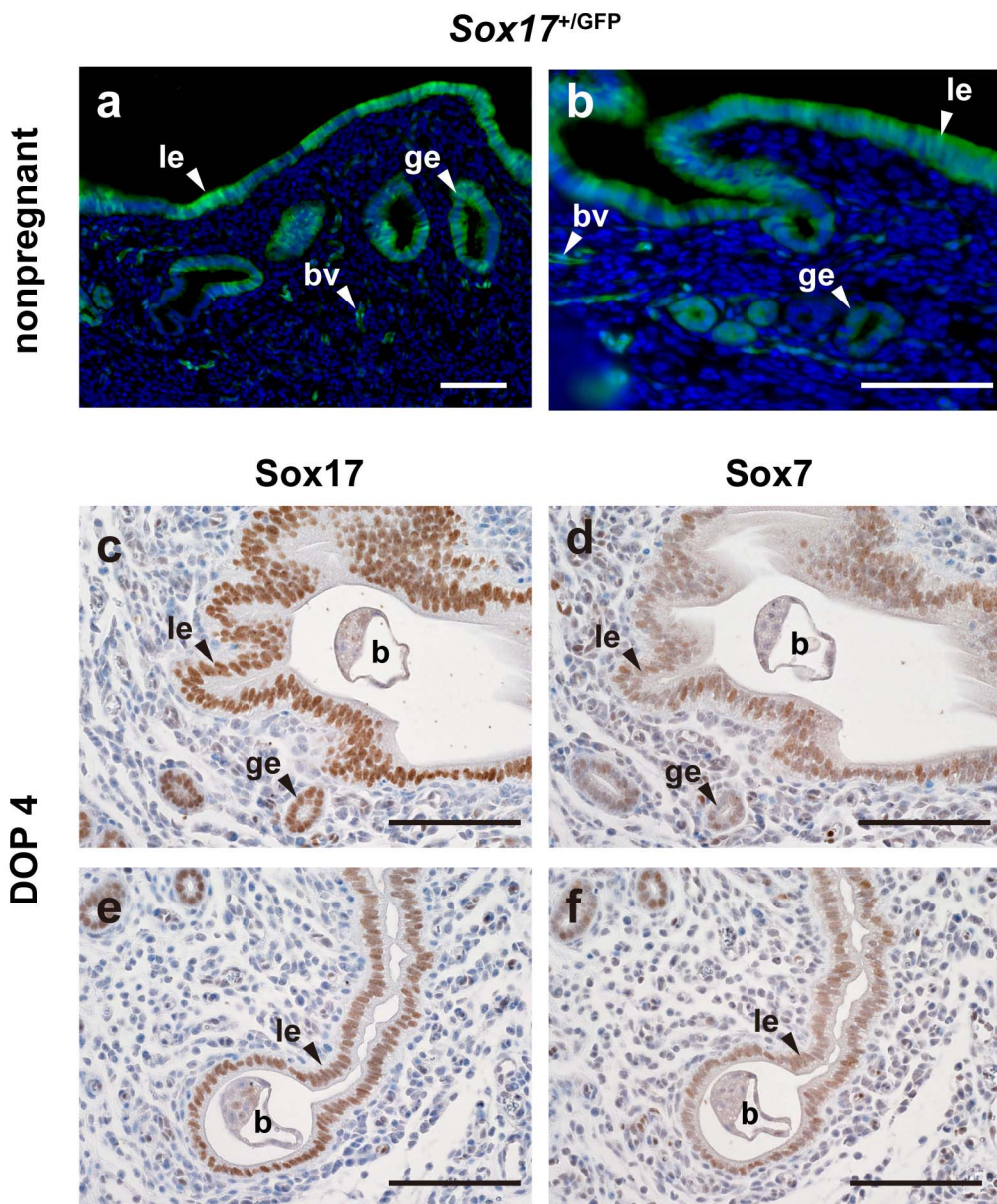


**Supplementary Information for:**

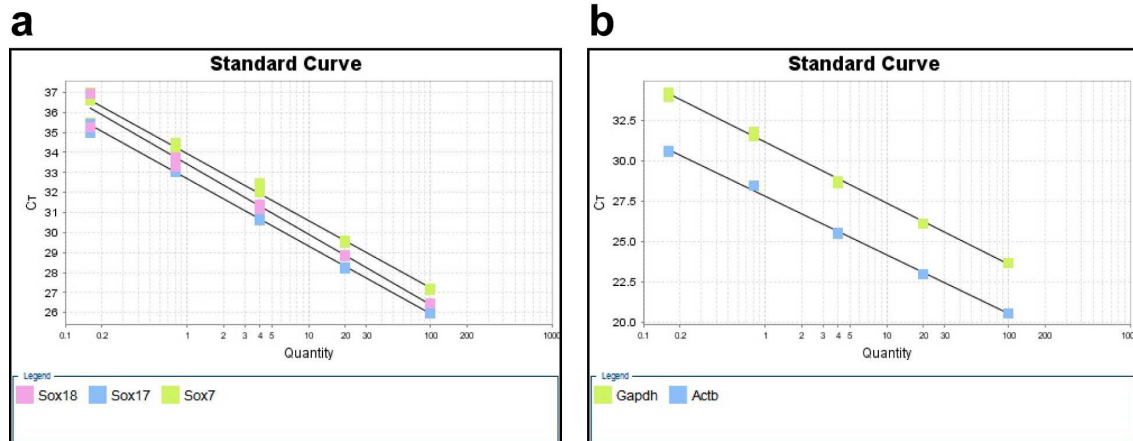
**Mouse *Sox17* haploinsufficiency leads to female subfertility due to impaired implantation**

Yoshikazu Hirate<sup>1,2,a</sup>, Hitomi Suzuki<sup>1,a</sup>, Miyuri Kawasumi<sup>1,2,a</sup>, Hinako M. Takase<sup>1</sup>, Hitomi Igarashi<sup>3</sup>, Philippe Naquet<sup>4</sup>, Yoshiakira Kanai<sup>3</sup>, and Masami Kanai-Azuma<sup>1,2,\*</sup>



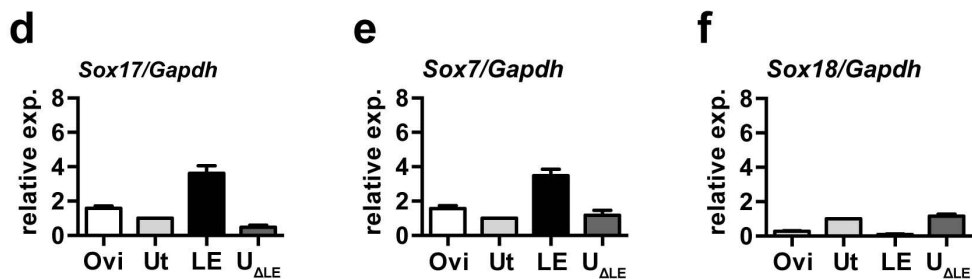
**Supplementary Figure S1. Expression of Sox17 in the uterine endometrium.**

(a, b) Fluorescence emitted from GFP is shown in green at lower magnification (a) and higher magnification (b). Nuclei are stained with Hoechst (blue). (c–f) Immunohistochemistry of Sox17 (c, e) and Sox7 (d, f) in the uterine endometrium at DOP 4. Crypt formation was more advanced in (e, f) than in (c, d). Abbreviations: le, luminal epithelium; ge, glandular epithelium; b, blastocyst; and bv, blood vessels. Scale bars, 100  $\mu$ m.



**C** Standard Curve

Target	Slope	Y-Inter	R <sup>2</sup>	Eff%
Sox17	-3.366	32.671	0.998	98.205
Sox7	-3.33	33.932	0.988	99.673
Sox18	-3.512	33.41	0.988	92.633
Gapdh	-3.769	31.114	0.998	84.217
Actb	-3.64	27.809	0.998	88.239



**Supplementary Figure S2. Quantitative RT-PCR analysis of the expression of *Sox17*, *Sox7*, and *Sox18* mRNAs in the oviduct and uterine tissues.**

(a–c) Standard curves of the genes examined by real-time PCR. Complementary DNA was reverse transcribed from total RNA isolated from the uterine tissue and used as a template. (d–f) Relative expression levels of *Sox17* (d), *Sox7* (e), and *Sox18* (f) transcripts in WT oviduct and uterine tissues at DOP 4, as determined by real-time RT-PCR. Relative expression levels ( $2^{-\Delta\Delta CT}$ ) were analysed by the comparative  $C_T$  method (mean  $\pm$  standard error of mean [SEM]). *Gapdh* was used as an internal control. The uterus was used as a calibrator.