

Figure S1.

Electrophoretic karyotypes of the 9 *L. quebecensis* genome strains.

The type strain was previously cited as LL11_022T.

Overall the *L. quebecensis* strains harbor highly conserved karyotypes with some variation seen in the largest chromosome.

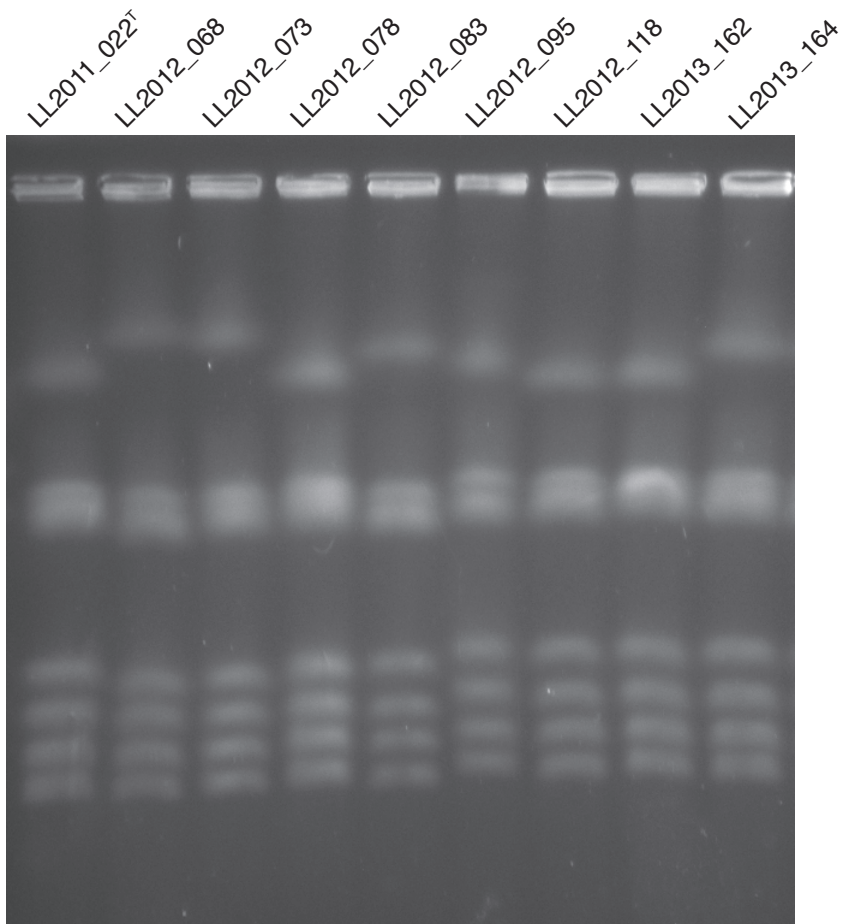


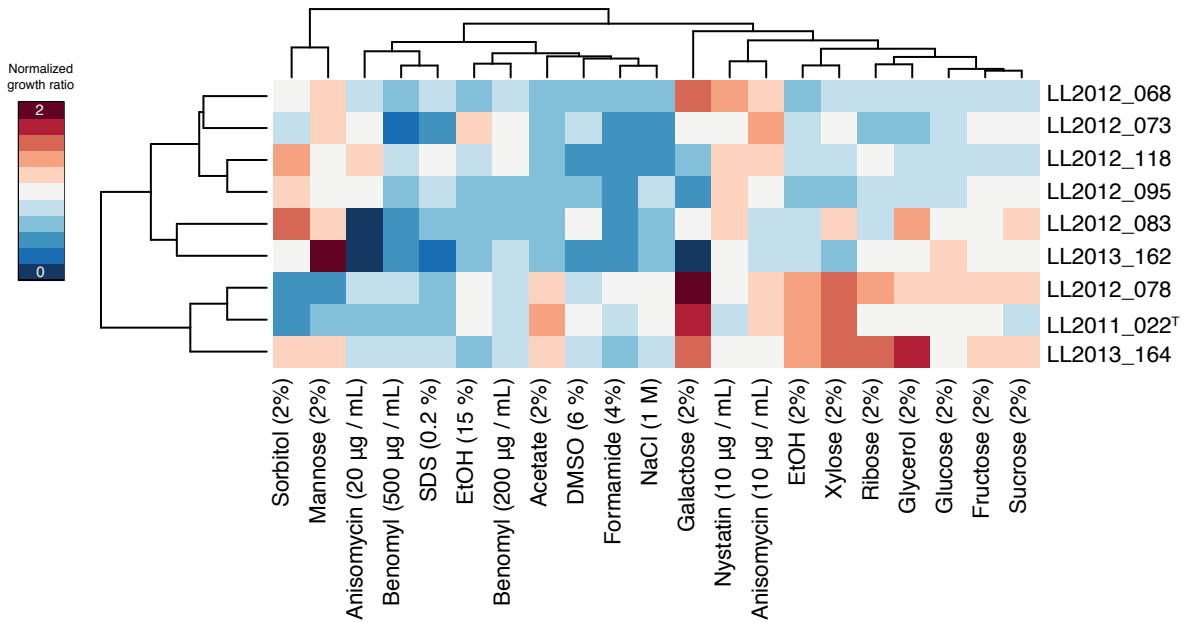
Figure S2.

Phenotypic diversity among the 9 *L. quebecensis* strains on 21 media types.

(A) Heatmap of the 9 strains were grown in 21 different media types including multiple carbon sources as well as other compounds that induced stress on various cellular functions.

(B) A PCA analysis of the 9 *L. quebecensis* isolates analyzed.

A



B

