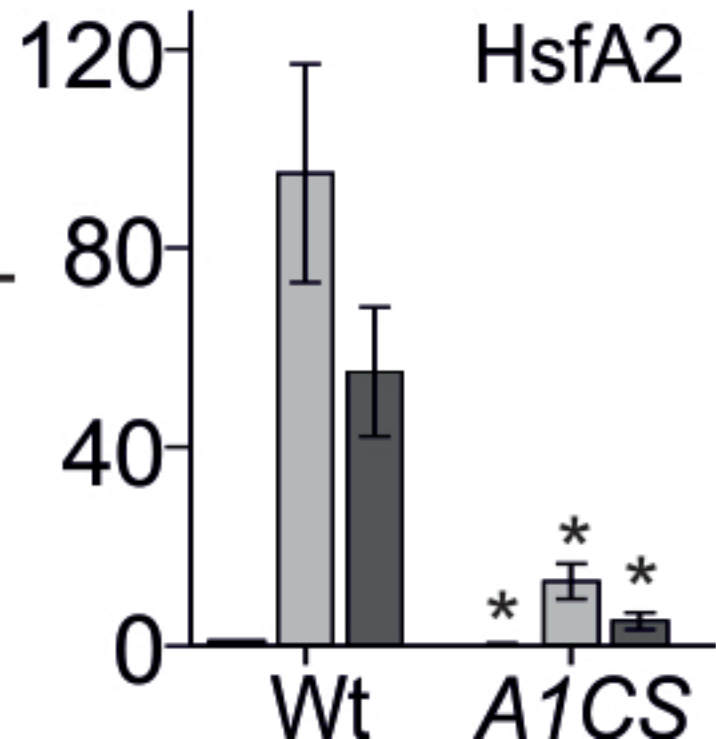
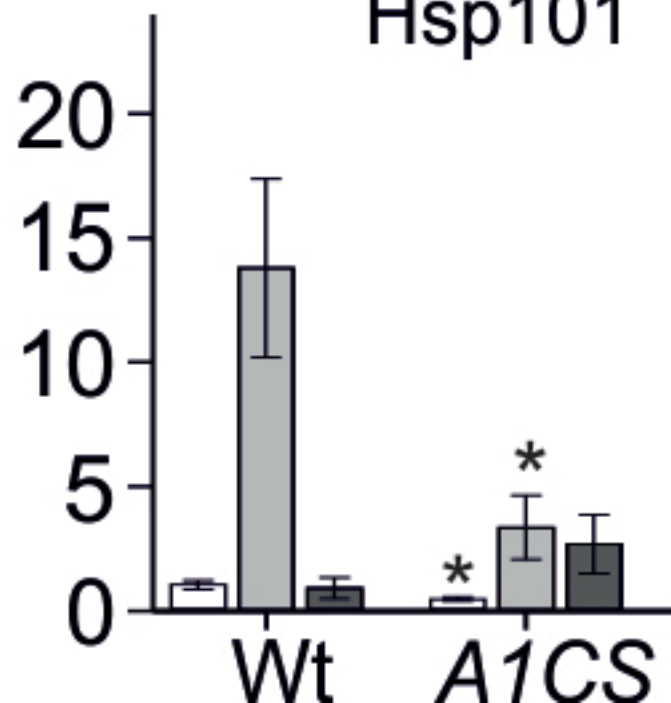


Relative expression

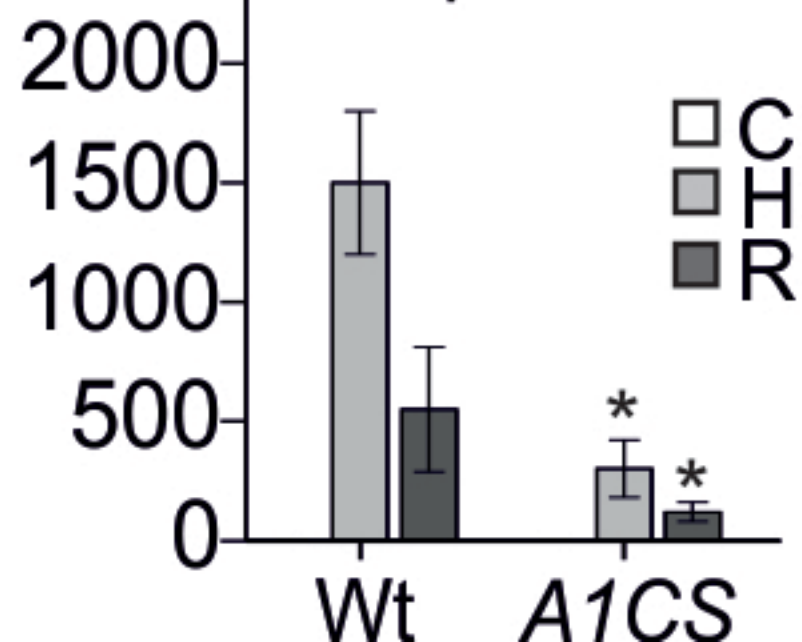
HsfA2



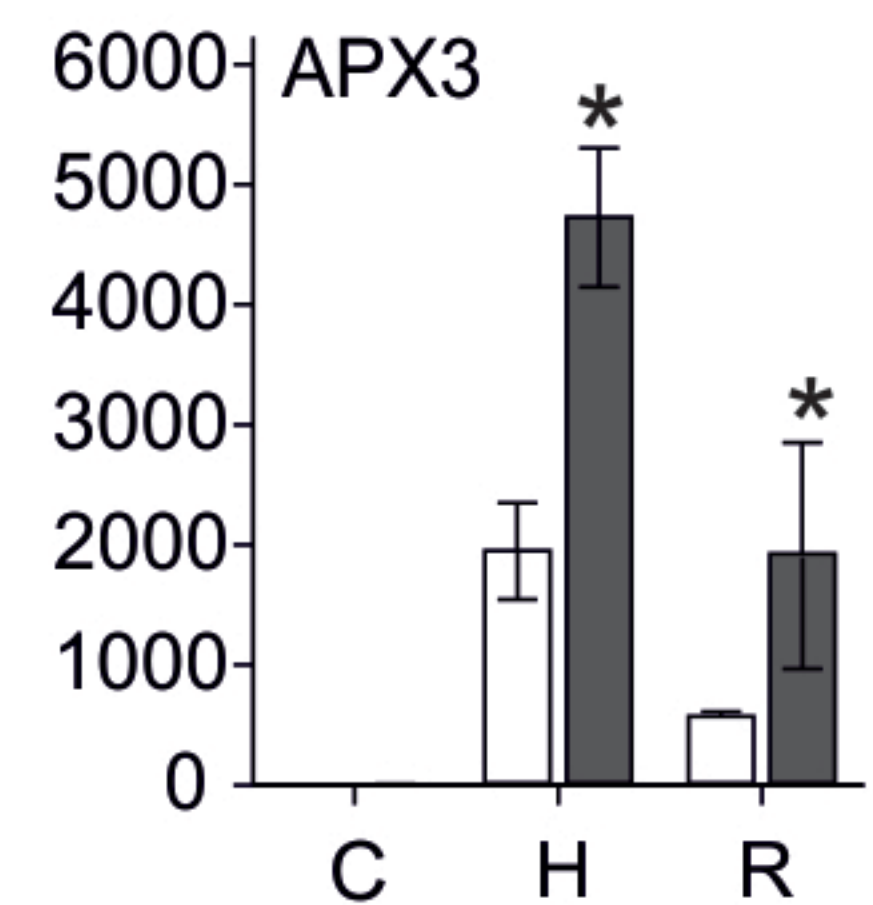
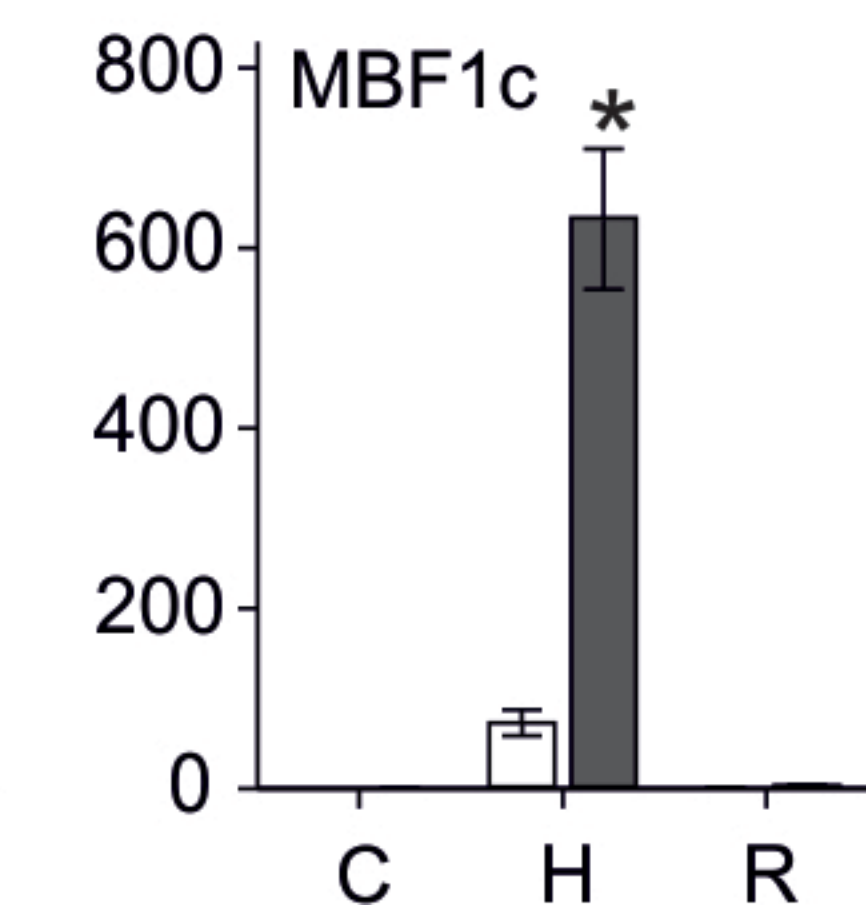
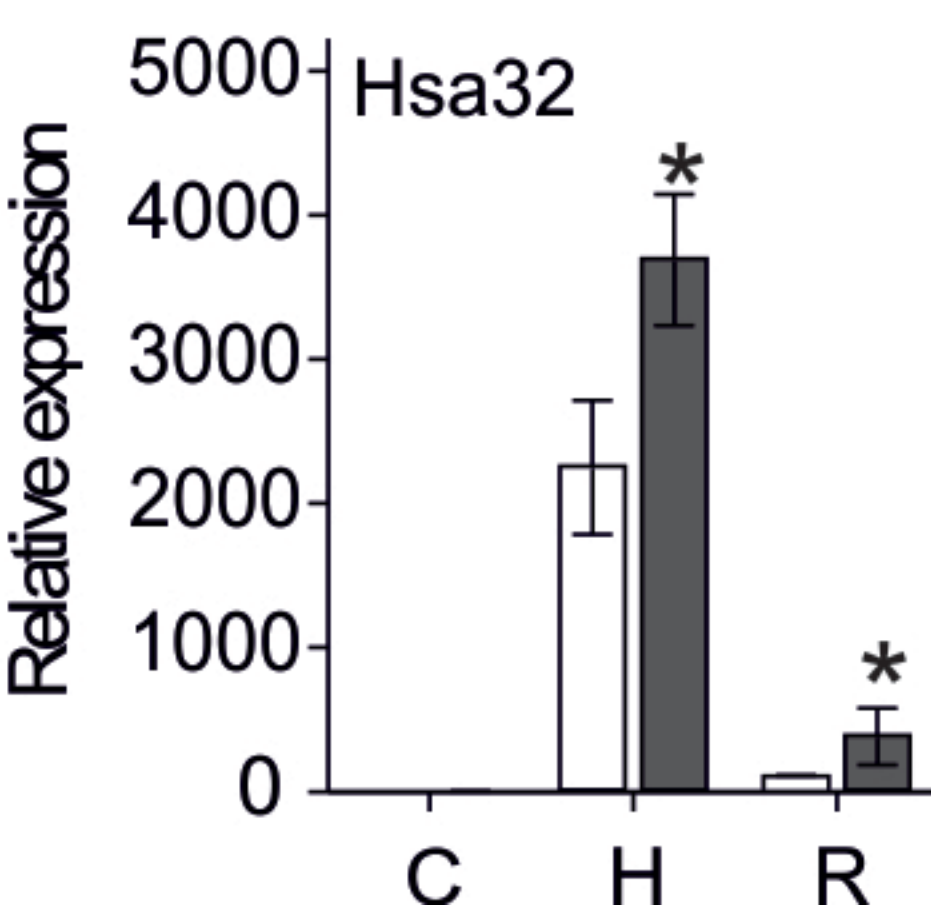
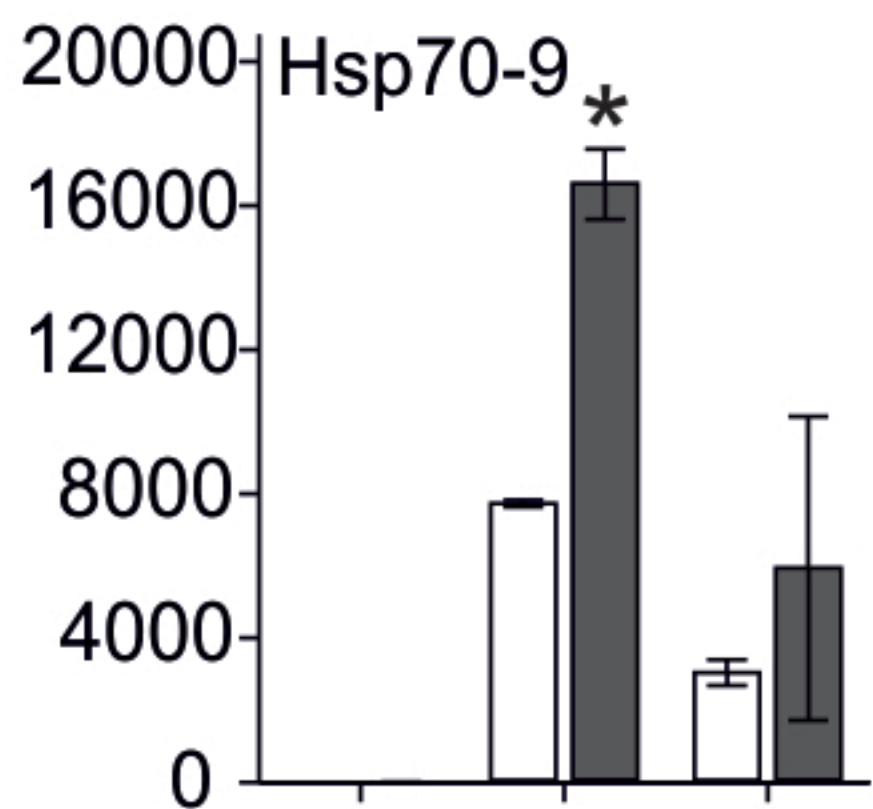
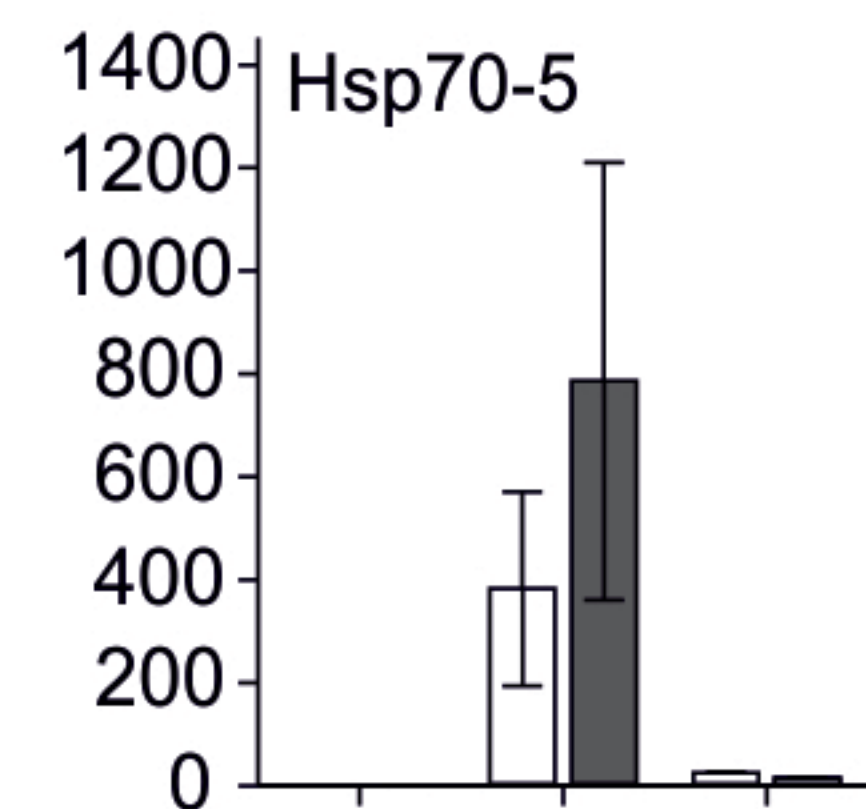
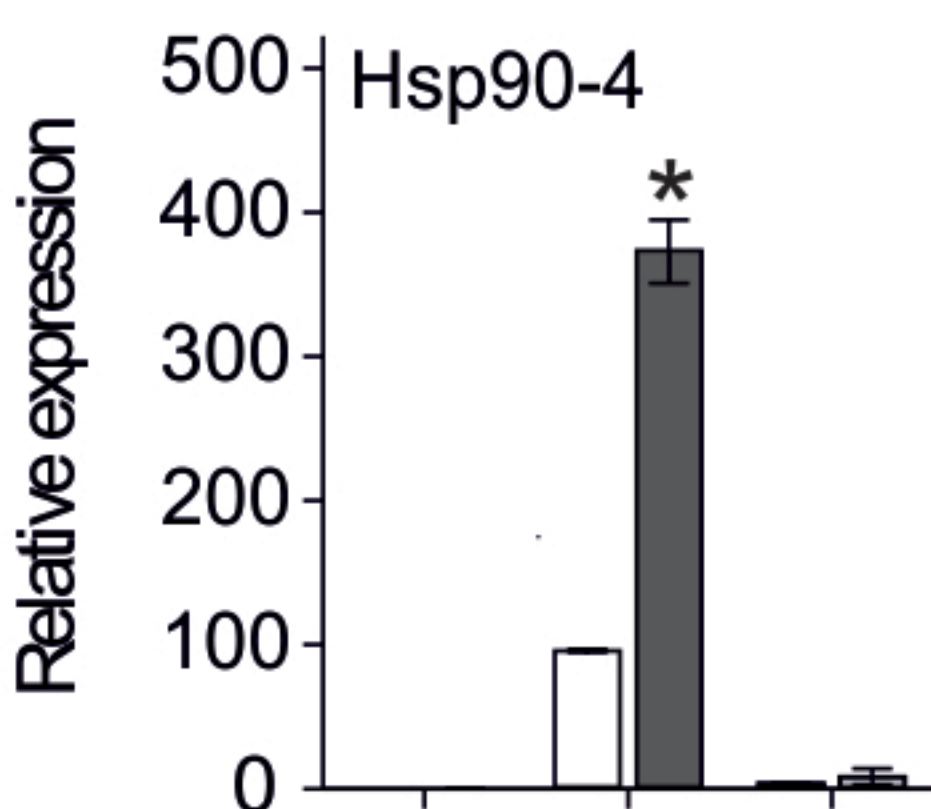
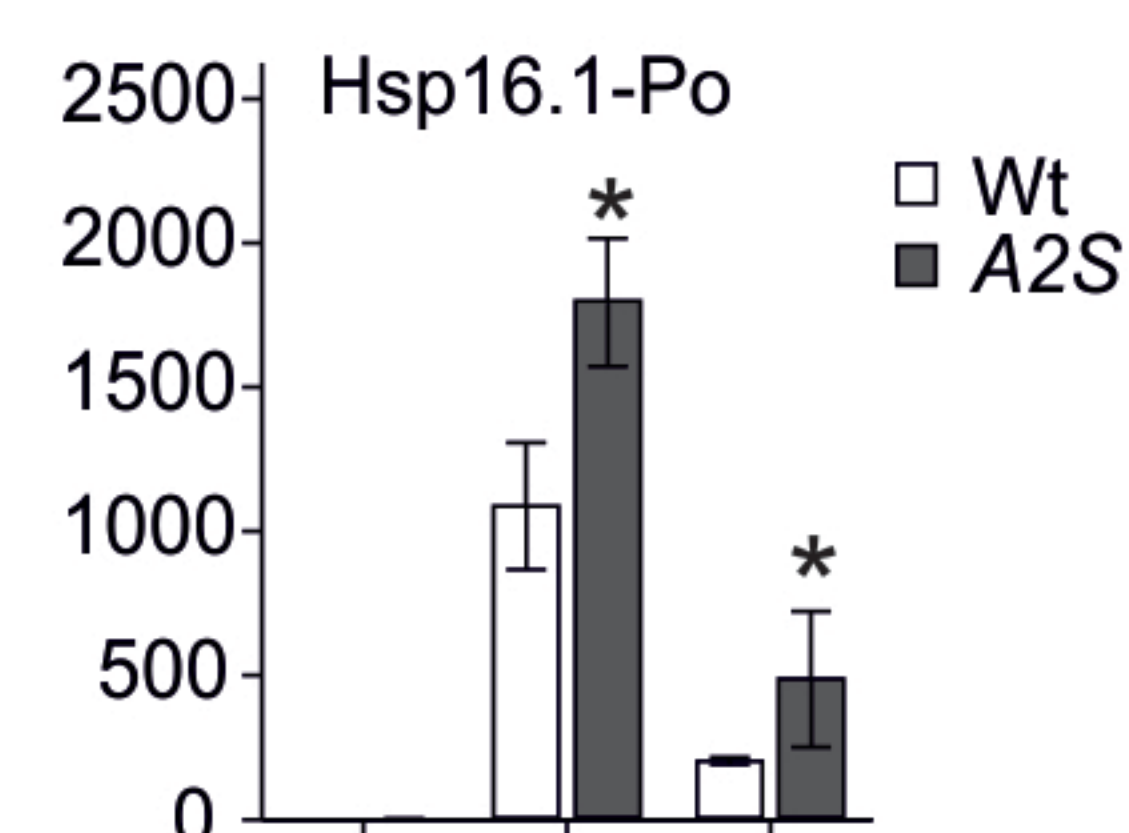
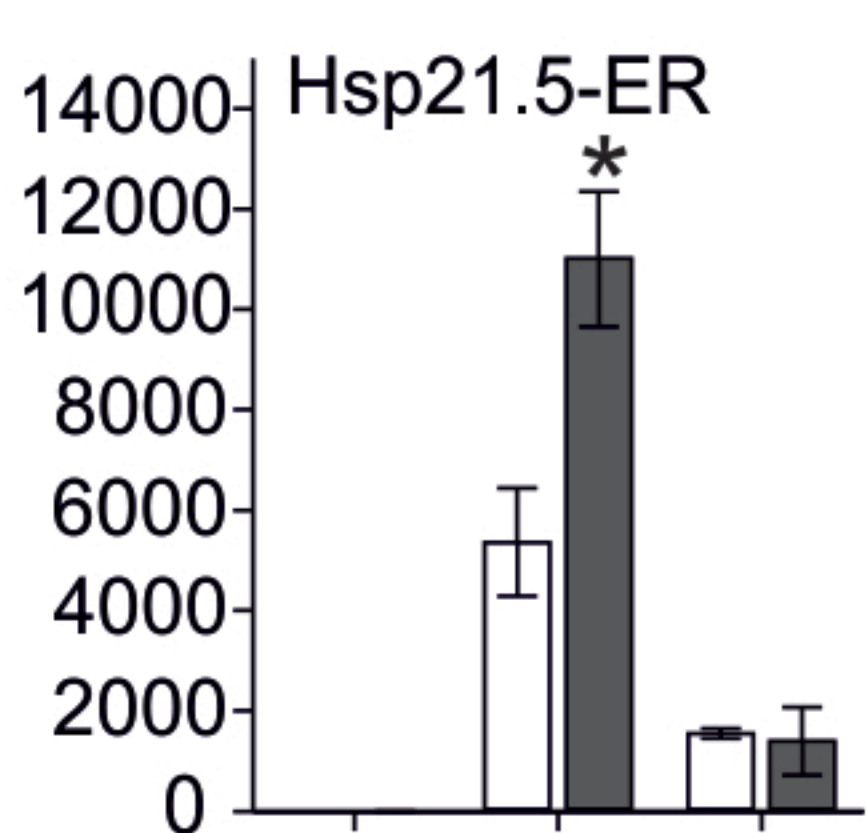
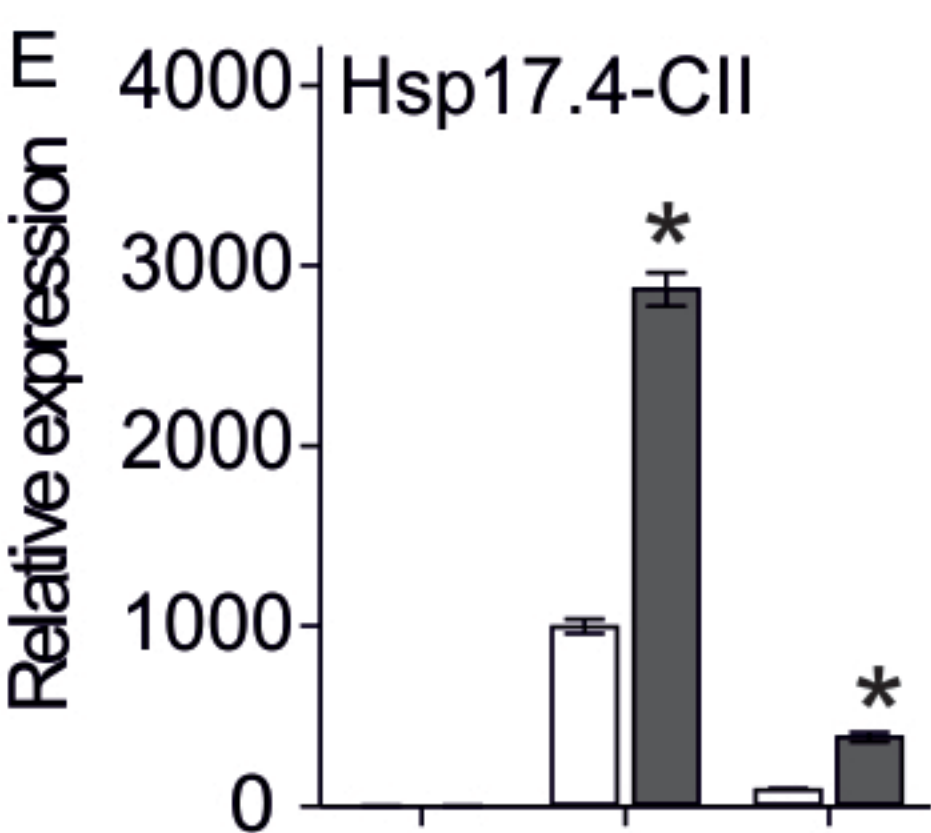
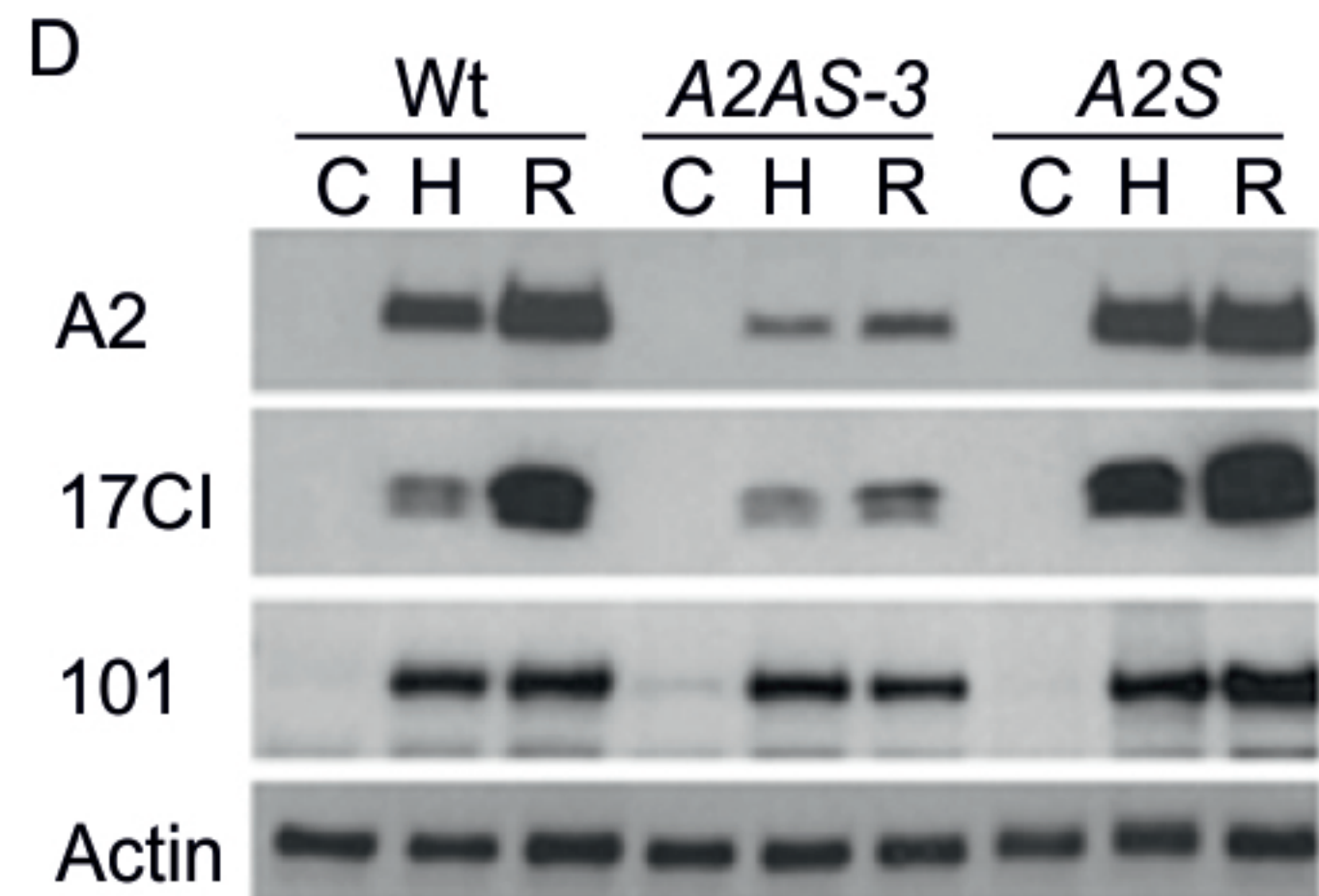
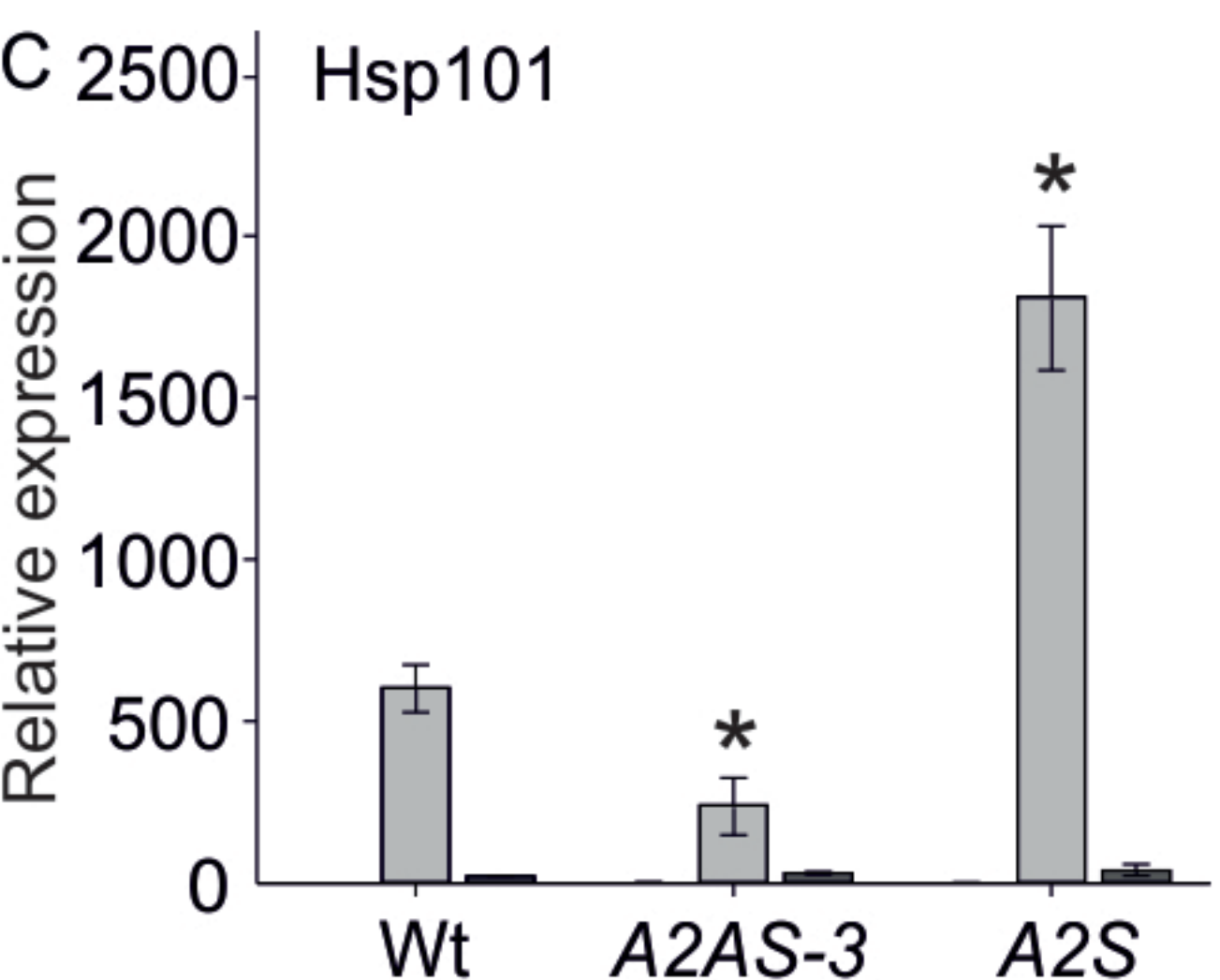
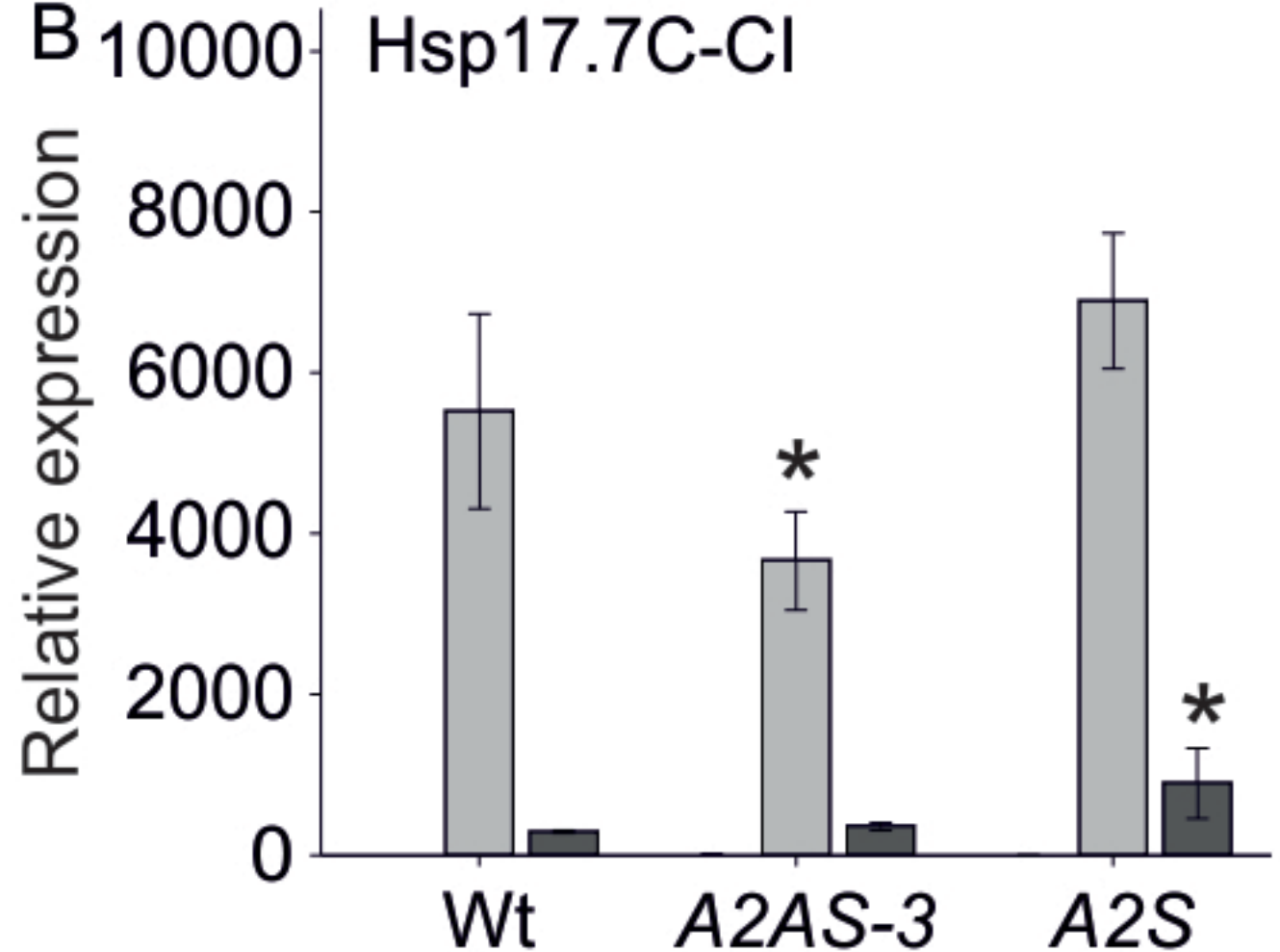
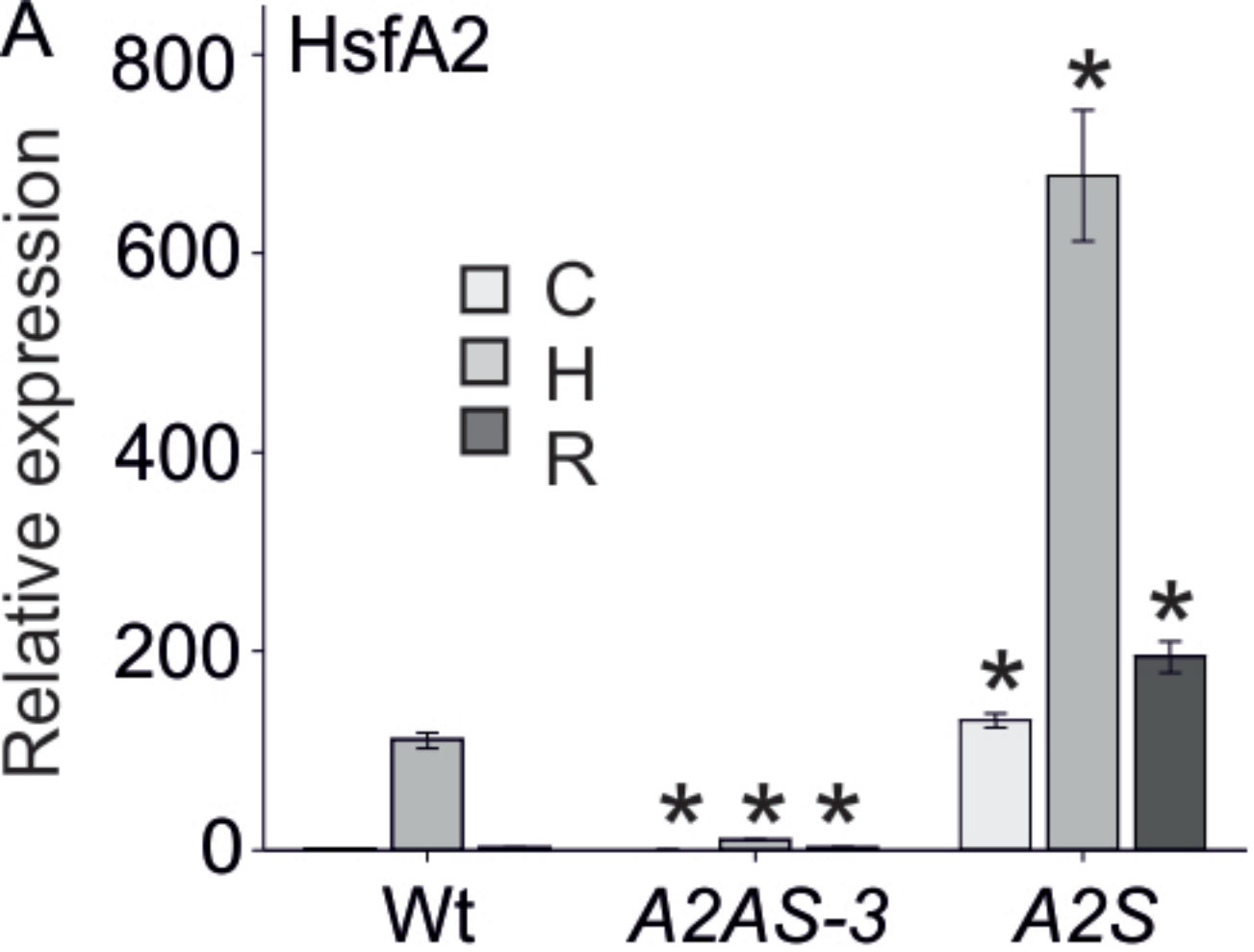
Hsp101

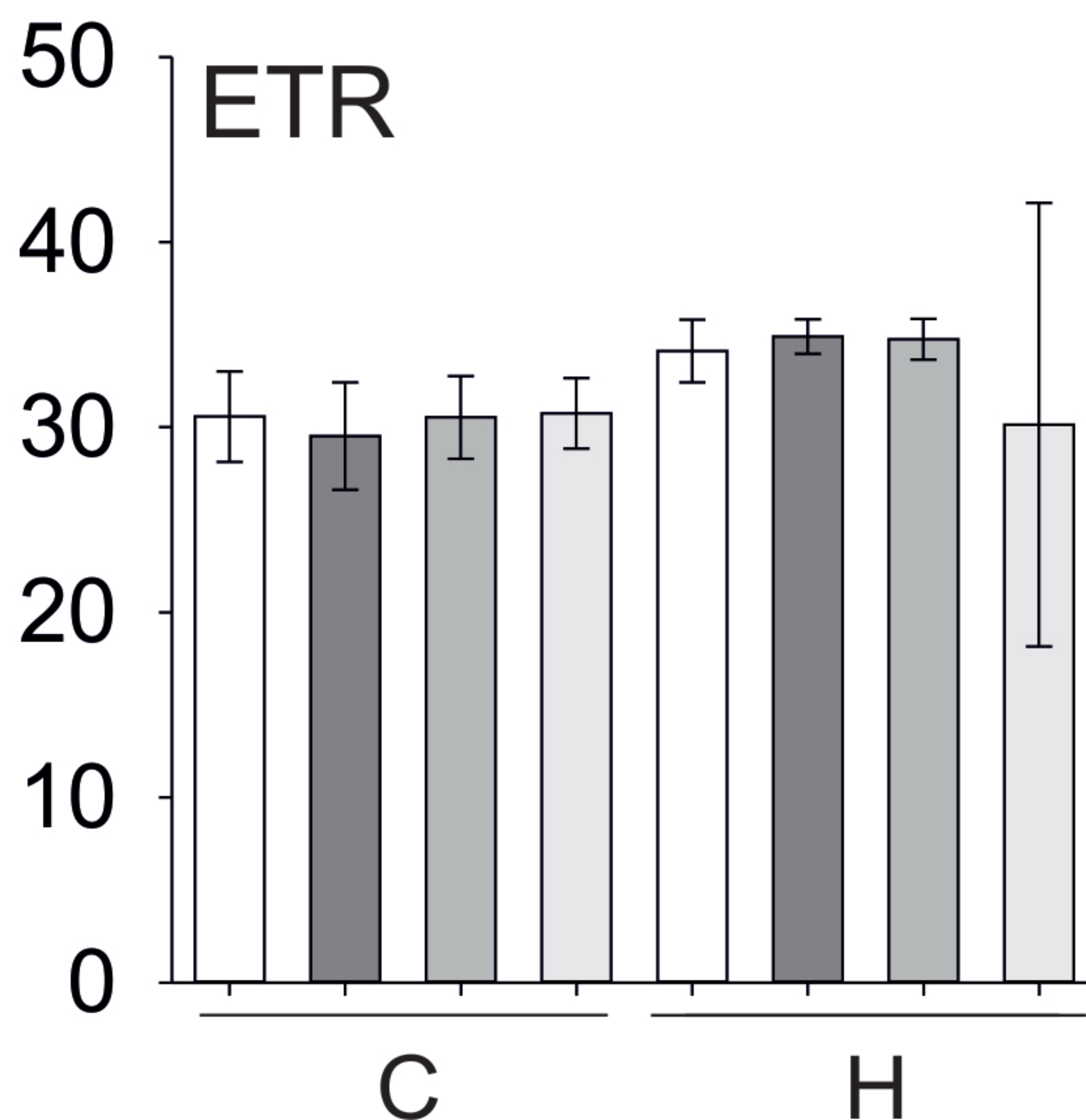
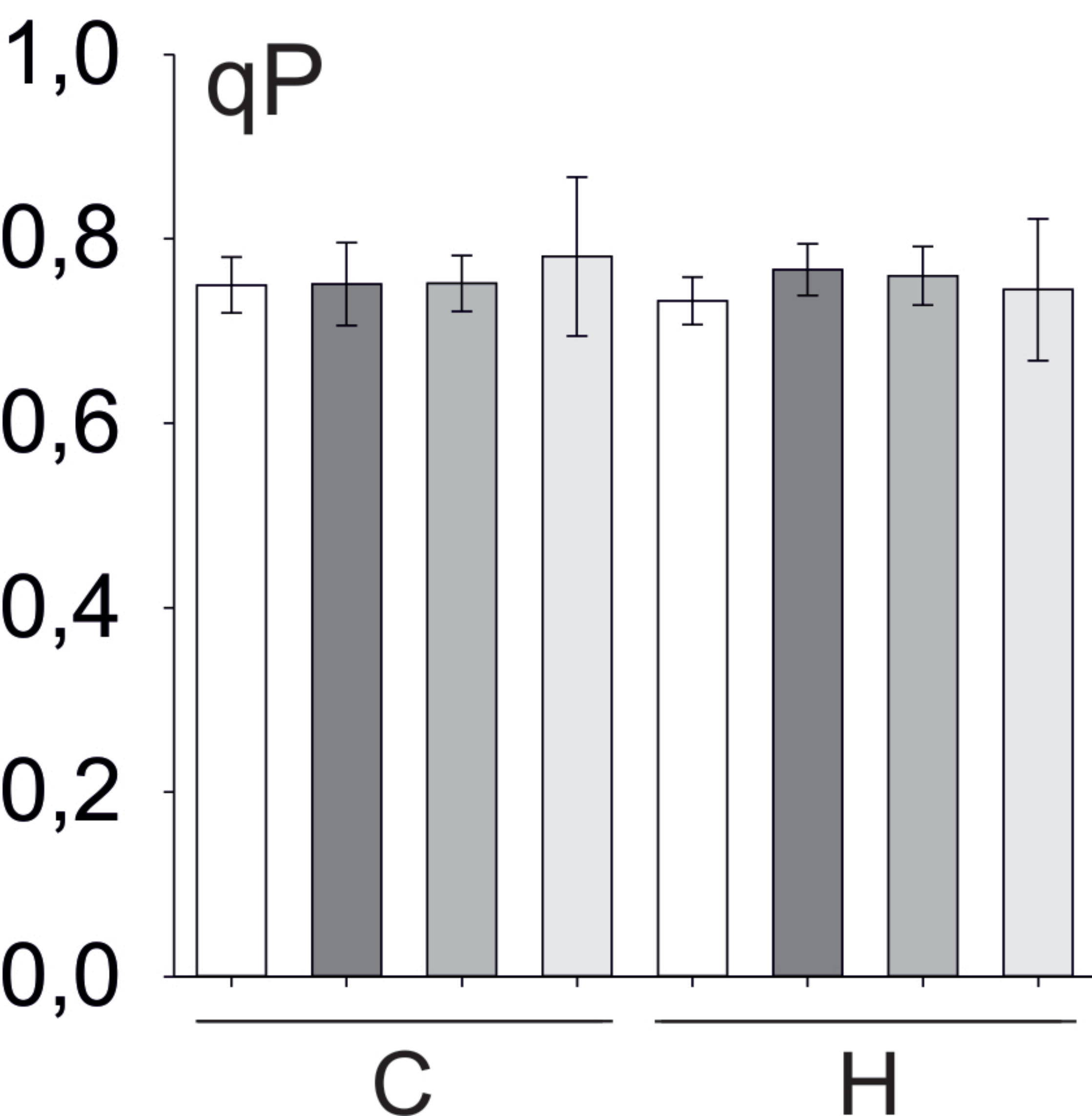
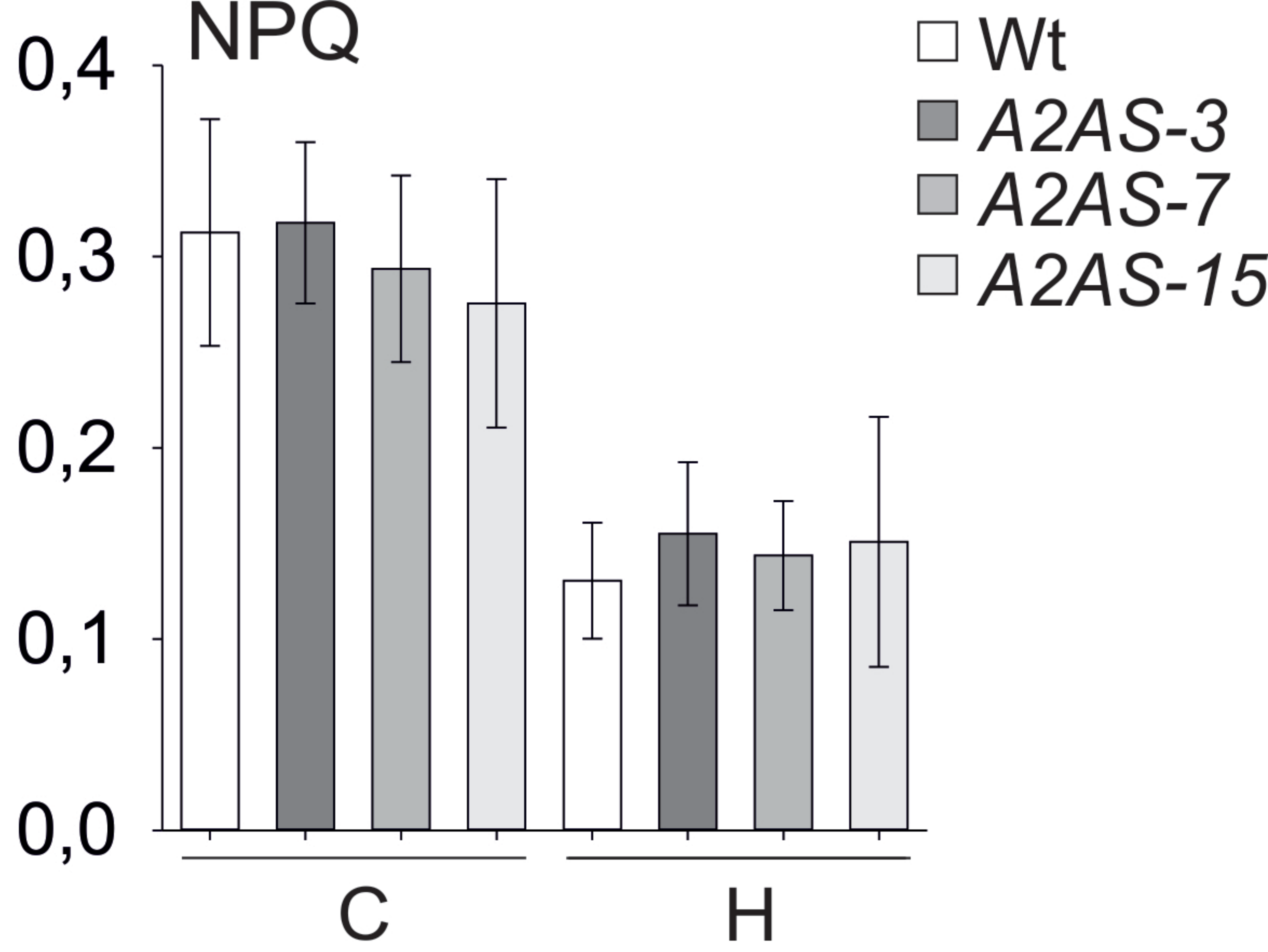
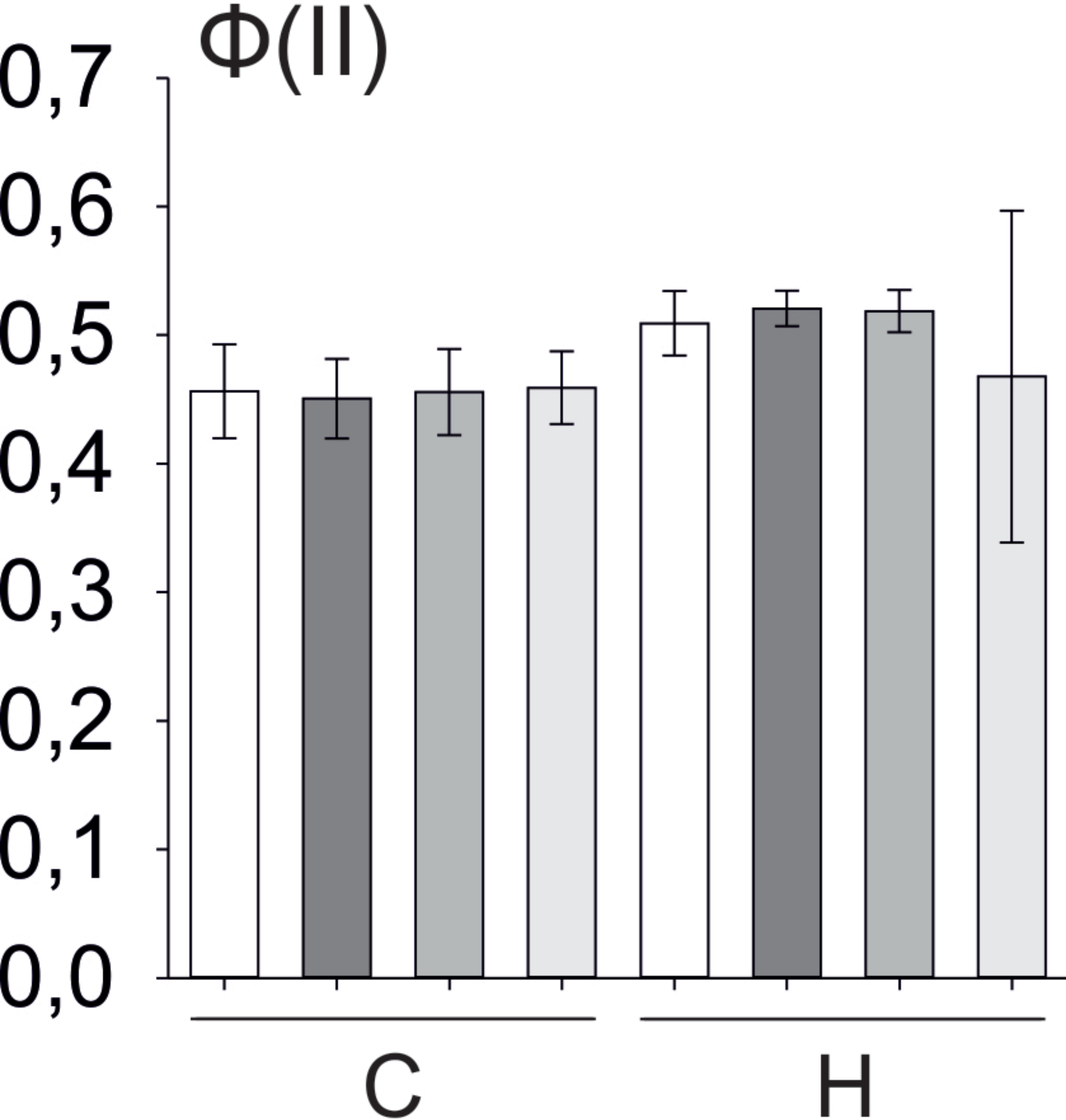


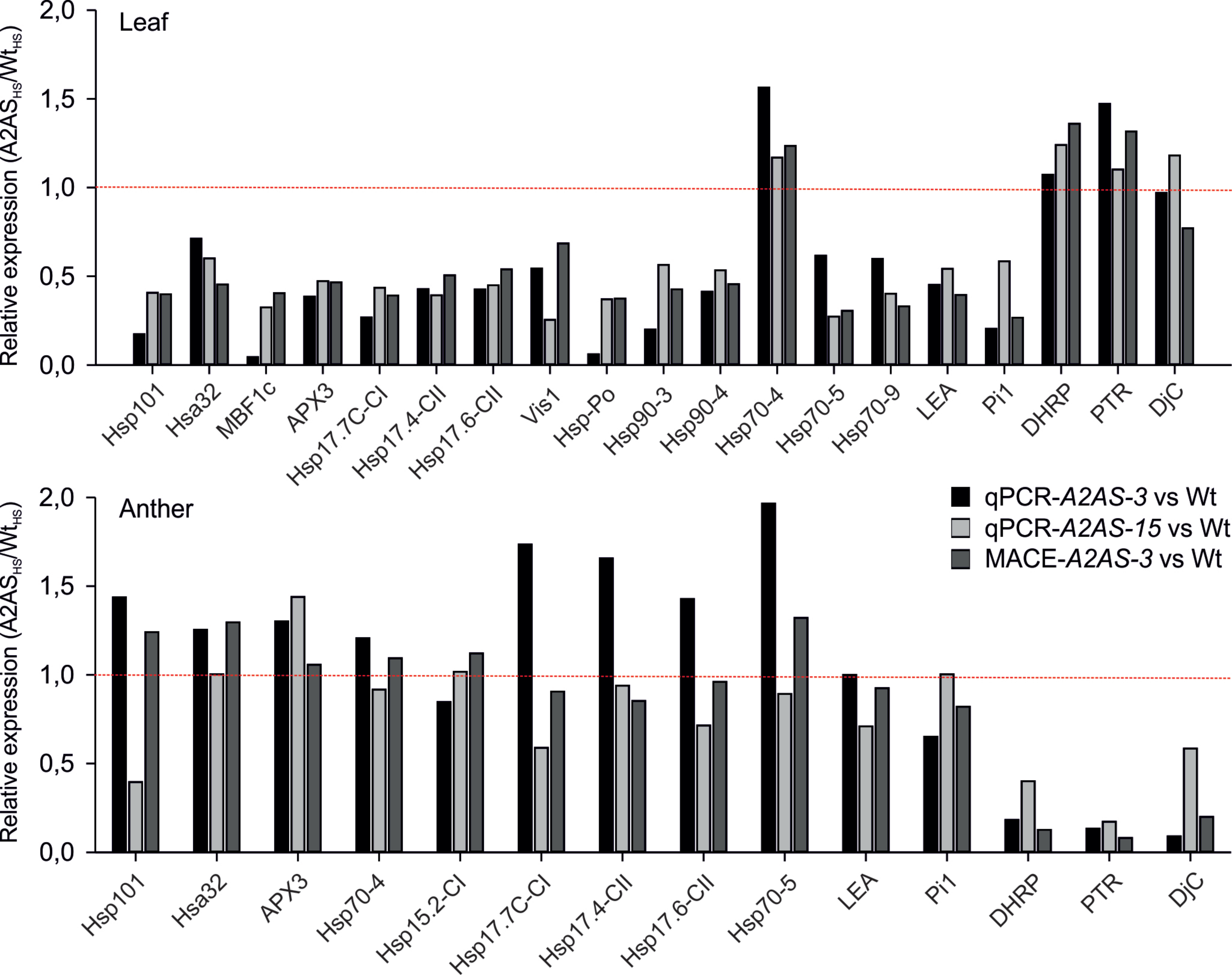
Hsp17.7C-CI

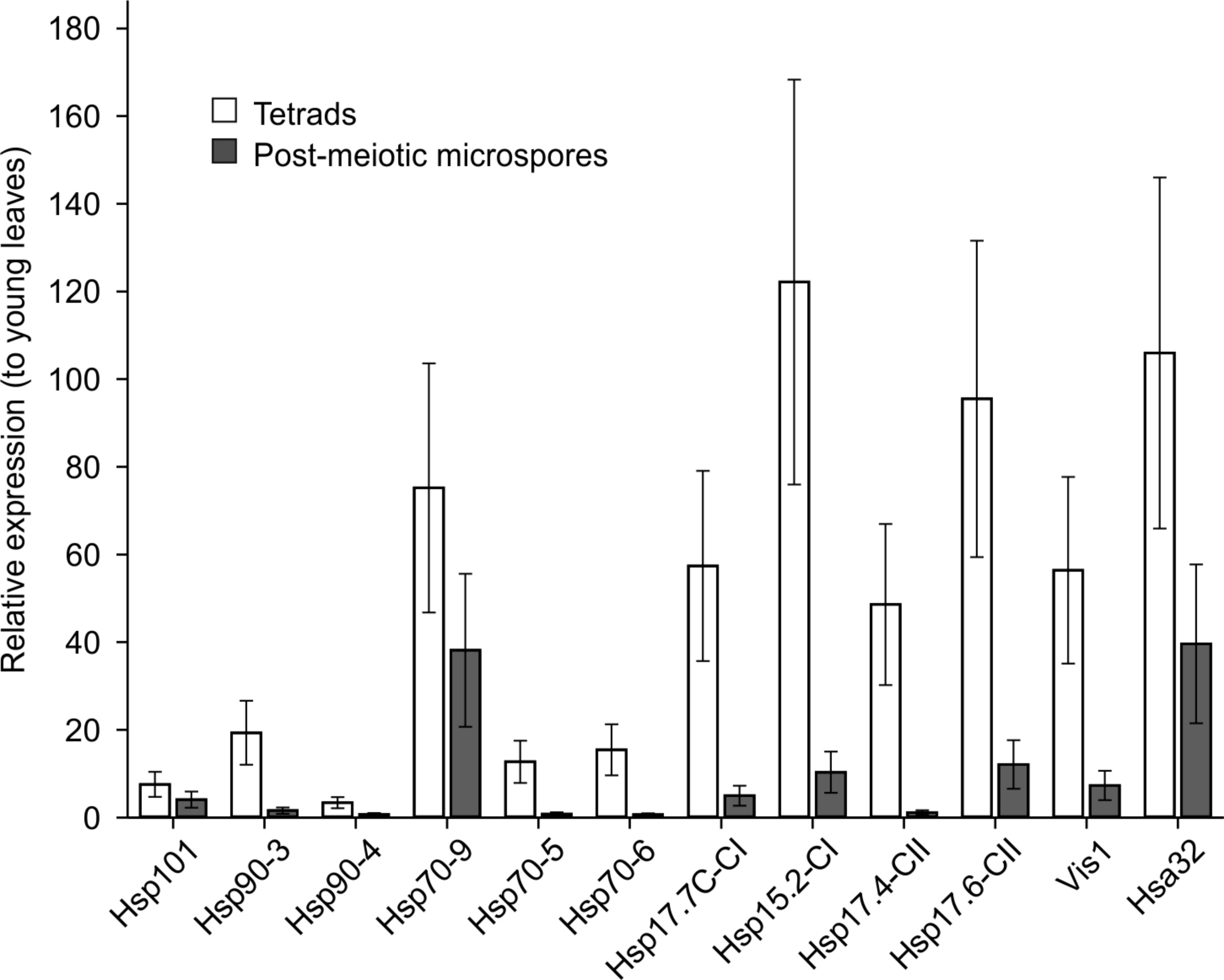


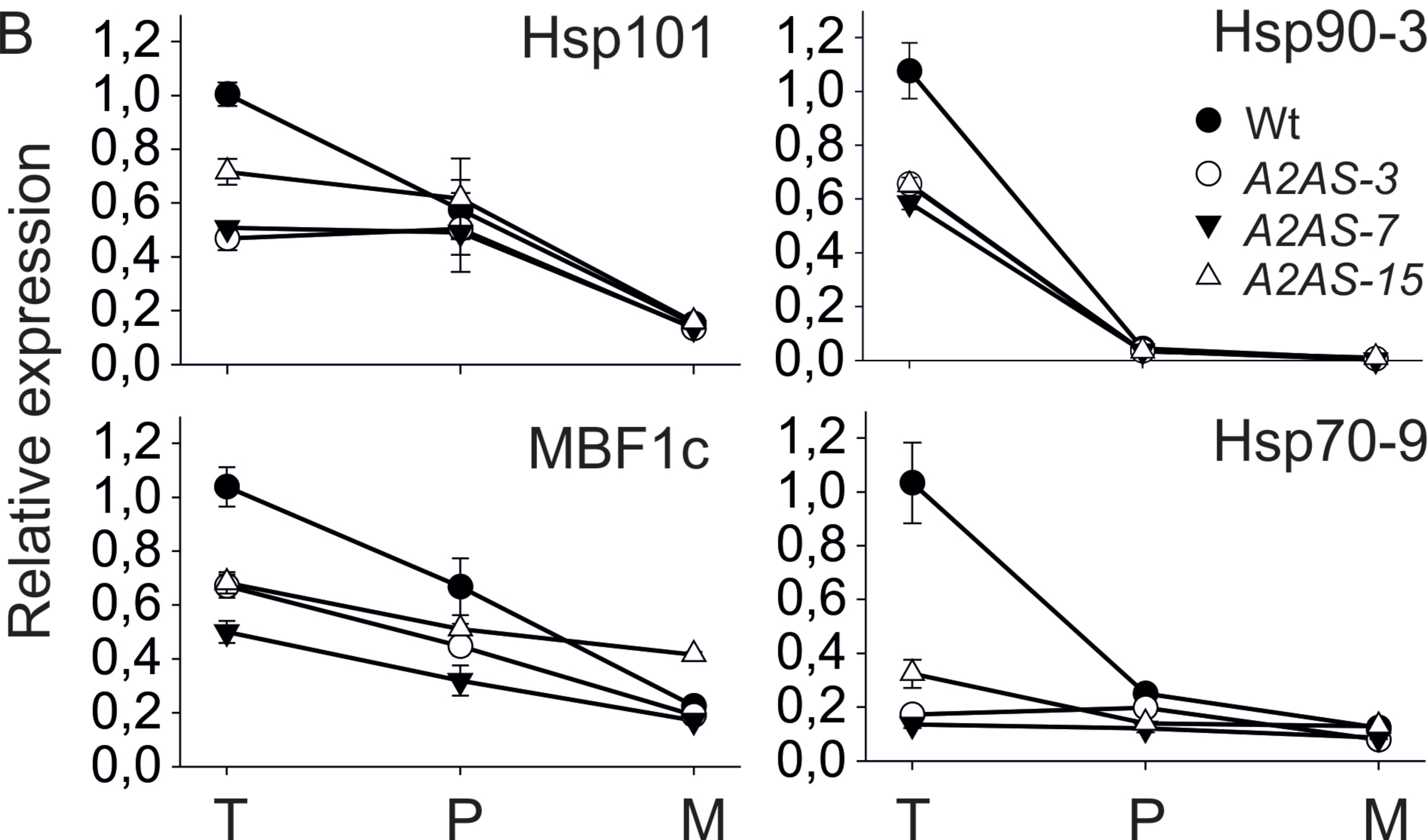
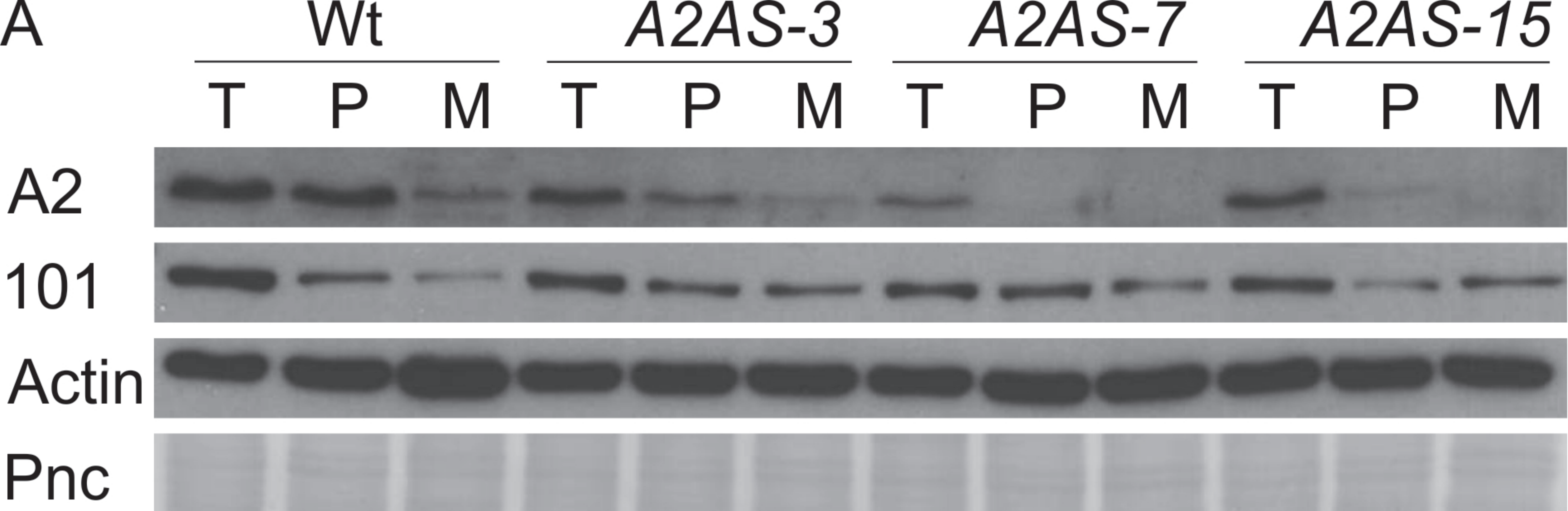
□ C
■ H
■ R

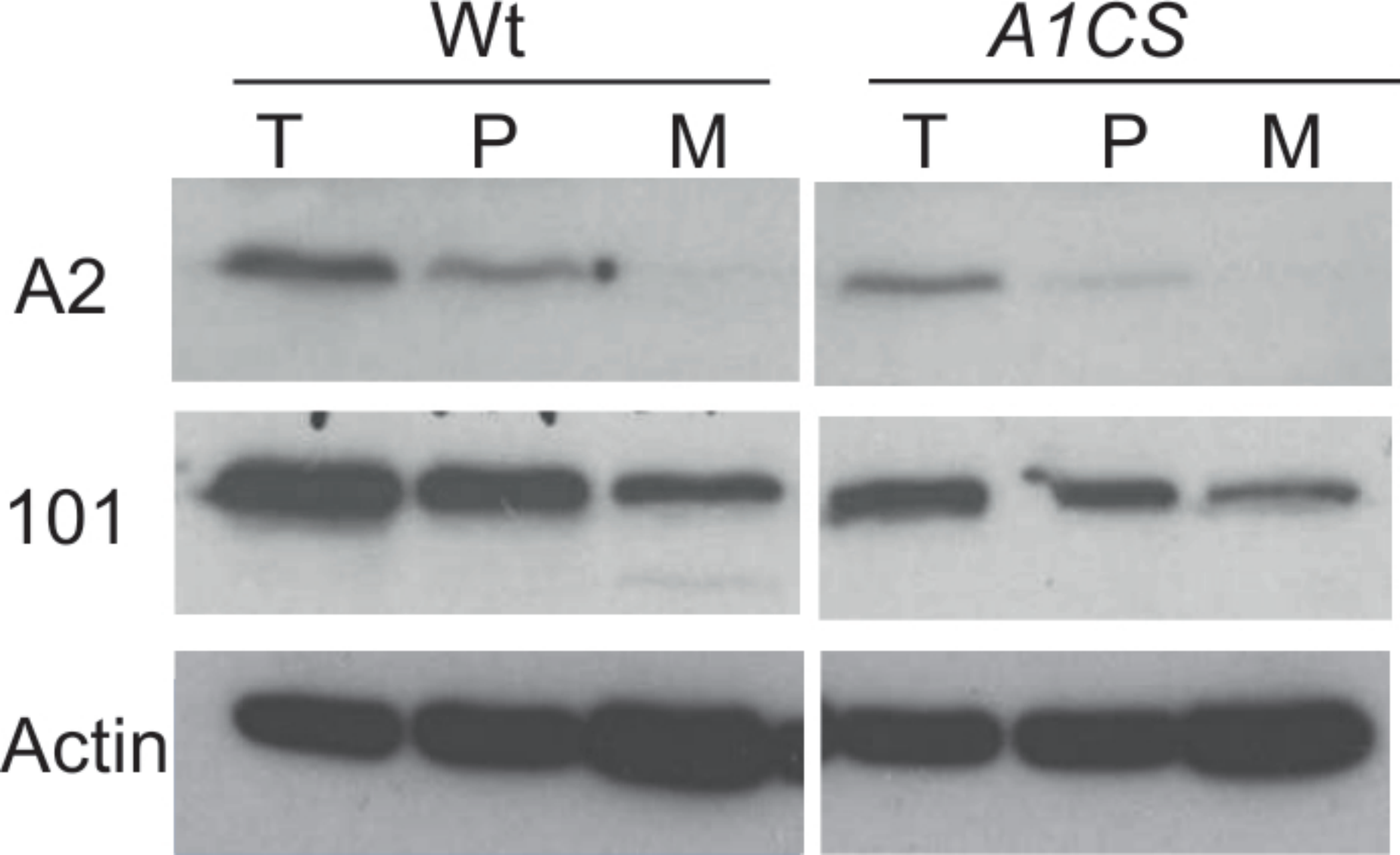












- 1 Supplementary Table 1. Overview of characteristics of the analyzed MACE libraries prepared from young leaves and anthers of control and heat-stressed
- 2 tomato wild type and A2AS plants.

Library	Library size	Number of mapped reads	Percentage of mapped reads	Hits on Watson strand	Hits on Crick strand
Leaf-Wt-C	11762204	11534512	98%	6235294	5299286
Leaf-Wt-R	14138812	13857252	98%	7301121	6556250
Leaf-A2AS-C	14052392	13796178	98%	7512194	6284129
Leaf-A2AS-R	6373703	6243965	97%	3383705	2860335
Anther-Wt-C	12687296	12411606	97%	6368089	6043673
Anther-Wt-R	14057885	13722325	97%	7081546	6640933
Anther-A2AS-C	15100696	14764187	97%	7473804	7290539
Anther-A2AS-R	14921347	14580174	97%	7535237	7045093

1 **Supplemental Table 7.** List of primers used for qRT-PCR analysis.

Gene name	Accession number	Forward primer (5'->3')	Reverse primer (5'->3')
EF1a	Solyc06g005060	GGAAGCTTGAGAAGGAGCCTAAG	CAACACCCACAGCAACAGTTT
UBI	Solyc07g064130	GGACGGACGTAAGTCTAGCTGAT	AGCTTTCGACCTCAAGGGTA
HsfA1a	Solyc08g005170	GGGATAAATGAGGCAGCAAA	TTGACCTGCAATTGCTGAAG
HsfA1b	Solyc03g097120	GAAAGCTTGCCTGACGCAGG	GGTCCGATATGATAGATAGTG
HsfA2	Solyc08g062960	TTCCACCACATTGTTGCCTA	GCAAGCACCAGATCCTTGT
HsfA3	Solyc09g009100	GCCCCGAGTACTTTGCCTCTT	CTATCCCATAACTCGGCACCAG
HsfA6b	Solyc06g053960/50	CACAAGTCAAGCTATGGAGC	GCTTCTTCAAGTTGTTTCC
HsfA7	Solyc09g065660	GCTTCTTTTATCCATGGTGTCC	CTTGAACCTGGAAACTCTTC
Hsp101	Solyc03g115230	GTGGCAAGTGTACCATGGAGA	GACTTGCTCAACTGCTCGT
Hsp15.2-CI	Solyc09g015000	TTGGAAAGAGACCCCACAAG	TTGAAGTTACCGCTGCTCTT
Hsp17.4-CII	Solyc08g062340	GTCGCAGCCATTGCCTTAGC	ACCACTCTTCCACACTTTCAGC
Hsp17.6-CII	Solyc08g062450	GATGGAGAGAAGGGTTGGGAA	AATTGTTTTGGGTTTCTTTGGC
Hsp17.7C-CI	Solyc06g076520	ATGGAGAGAAGCAGCGGTAA	ATGTCAATGGCCTTCACTC
Hsp21.5-ER	Solyc11g020330	ACTAAGCGCAGATGGGTCAT	CGCGAGCAGAGTGTTTTCTA
Hsp70-1	Solyc06g076020	GCTCGAGGGCATCTGTAATC	GAAACCAACTAGTATCTTTATCAACC
Hsp70-4	Solyc09g010630	AAGATTGAGGAGGCCATTGA	CCATCATCACCCATGTCAG
Hsp70-5	Solyc04g011440	GGAAGTGGACTAAGCTCCACA	CGAAGGATATTTCTACATACACAAA
Hsp70-6	Solyc11g066100	GACAGCAACCAACTTGCAGA	CCTGCACCACCACCAACAGAAGG
Hsp70-9	Solyc11g020040	GAGCTCAAGGATGCCATTTT	CAGATGATCCAGTTGTACCAG
Hsp90-3	Solyc06g036290	TTCTTGGTGACAAGGTCGAA	ATCAGGATTAATTTCCATCGTCT
Hsp90-4	Solyc03g007890	TGACCCGAATACATTTGCTG	ACCGCATATAGATGACGCAT
Vis1	Solyc05g014280	GGGATAGGTTTCCAACAGCA	TGATCTCCCATGGTGTCTT
Hsp16.1-Po	Solyc04g014480	CCAGCTCTTCTCGATTGGAT	TACCGTGAATTCTGCTCTT
Hsa32	Solyc02g079930	AAGATTGTGGGTCTGCTTGG	CTGAGGCATTCCAGATCCAT
LEA	Solyc06g009140	ATTTCTTCCGCTGCAACTTC	TATCCACGCCTCTGGATAGC
MBF1c	Solyc01g104740	GTGGGTGTAAGGCAAGCAAT	CTATGGCCTTTCCATTTCCA
APX3	Solyc09g007270	CCGCCCTCTAGTCGAGAAAT	AGAACCAGACTGATCTCCAGAGA
DjC	Solyc07g053620	CCGGATAAGAACCACAAAA	CTTGAGCCCTTCTTACCAT
Desiccation-related protein	Solyc01g099570	CAGAGAAGGGAGTGGGAGTG	TAGGAGGTGGCCAGACATA
DHRP	Solyc06g035790	CCGGCAGCAGCAGCGTCT	TTGATGTCGAAACAGGGT
Pectate lyase	Solyc05g007080	AACCCACCATCATTAGCCA	CCATTGCCAGTTTCTCCACA
Pectinacetylase	Solyc12g005320	CCTAGCTGGCAGTTCTGC	GCGGCAACTCTGAAAATCTC
Pectinacetylase	Solyc03g078260	AGTGGAAGTTCTGCAGGAGG	AGGCTCCTTGGGGTTGATAA
Pectinesterase	Solyc01g066360	GCAACAAGAAGTATGCTGATGG	TCTTGTCTGCTGATACACGGA
Pil	Solyc01g097270	GACAAATCGATACAGATGGAGTG	CTCATTCTCTGTCAACAACAGATAGC
SISTP11	Solyc06g054270	TGGTGTGGTGTGGTTTCG	GTTGGGGTGCATGTTTCAT
PTR	Solyc06g050900	TTTCACTACGGGAAACGAC	GGCCATTCTGTGATCAACT

2

3

4