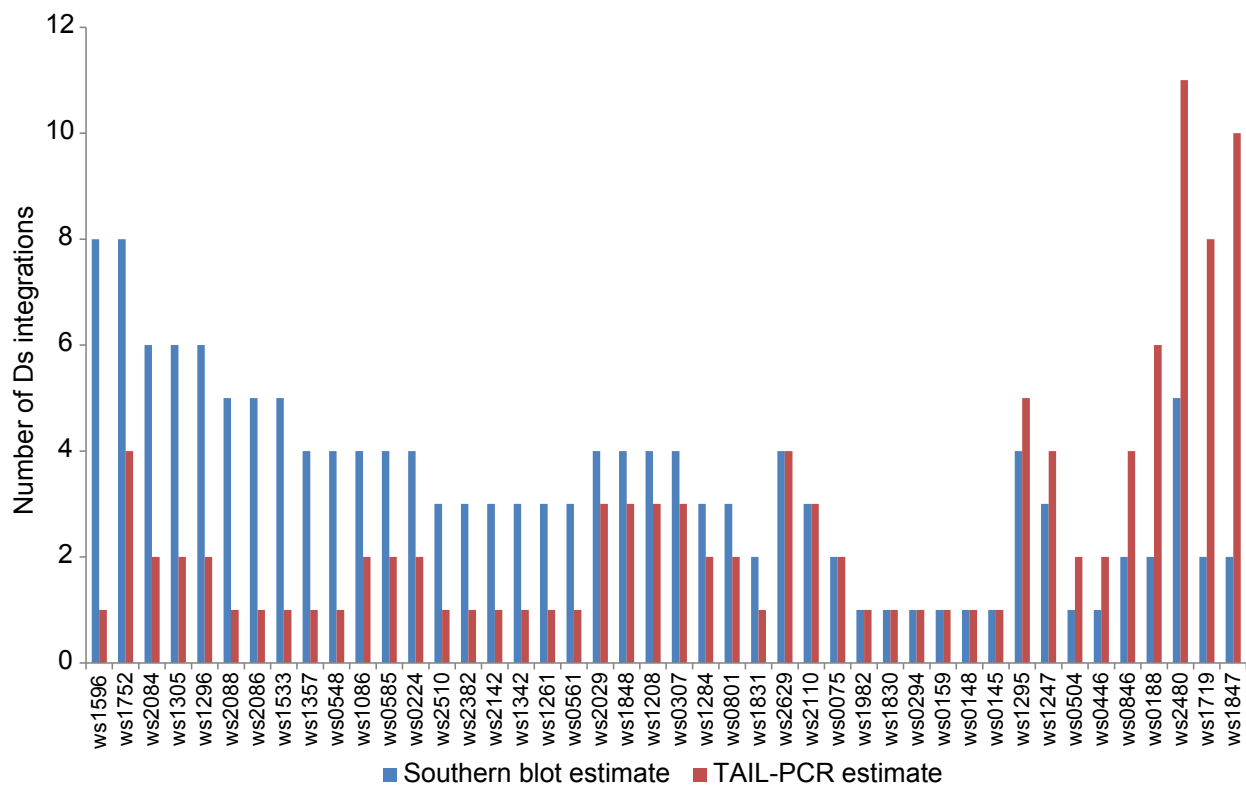


Figure S1



Supplementary Figure S1. Comparison of integration site identification by TAIL-PCR and Southern analysis.

Southern blot analysis was performed on a subset of selected Ds zebrafish lines. The number of Ds integrations identified by TAIL-PCR agreed with the number of inserts estimated by Southern blot analysis in only 8/44 cases. In 26/44 cases, TAIL-PCR resolved only a subset of all inserts predicted by Southern blot analysis. In 9/44 cases, more integration sites were identified by TAIL-PCR than were predicted by Southern blot analysis with a number of sites detected ambiguously in different independent lines.