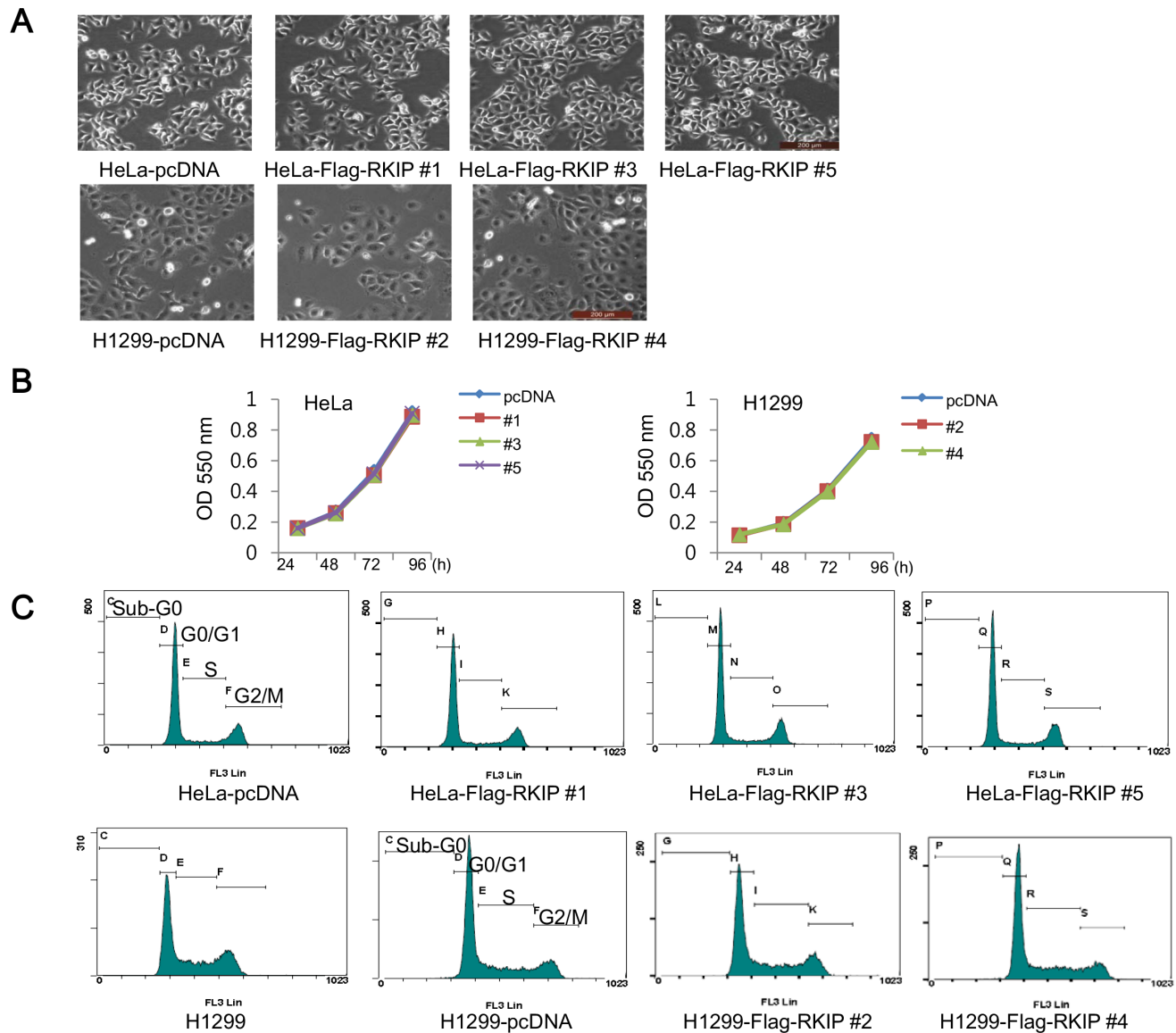


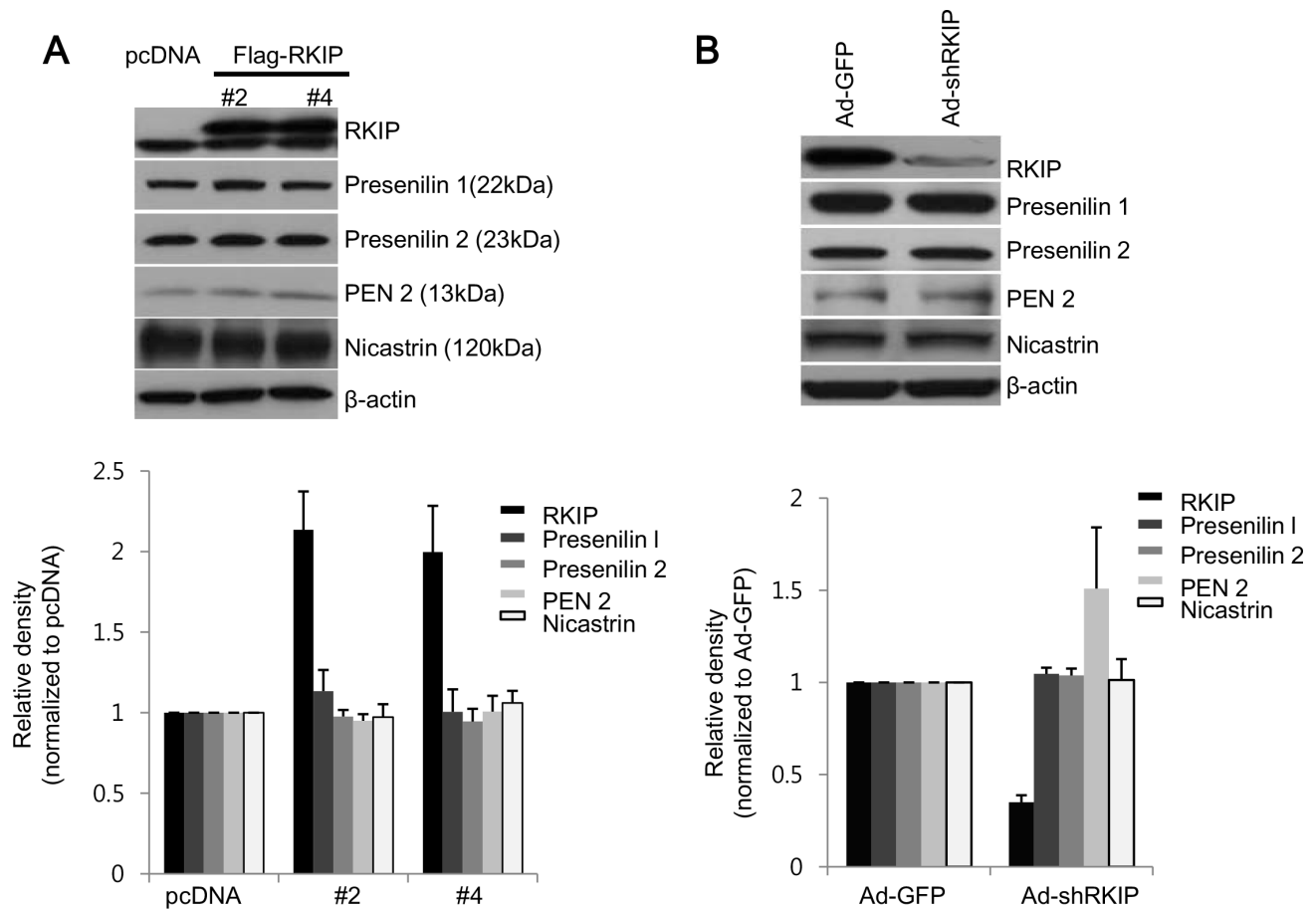
Regulation of the epithelial to mesenchymal transition and metastasis by Raf kinase inhibitory protein-dependent Notch1 activity

Supplementary Materials



Supplementary Figure S1: Overexpression of RKIP had no effect on cell morphology or cell proliferation.

(A) FLAG-RKIP-overexpressing HeLa (clones #1, 3, and 5) and H1299 (clones #2 and 4) cells as well as control cells were photographed under the inverted microscope (Leica). (B) Cells were cultured in 96-well plates at 2×10^3 cells per well for 24, 48, 72, and 96 h. Cell proliferation of each clone was assessed by the MTT assay. (C) The cell cycle of each clone was analyzed by flow cytometry with propidium iodide staining.



Supplementary Figure S2: RKIP did not influence the expression of γ -secretase complex proteins. (A) Expression of γ -secretase complex proteins in RKIP-overexpressing H1299 cells. Total cell extracts of pcDNA-H1299 or FLAG-RKIP-H1299 (clones #2 or 4) were subjected to Western blot analysis using the indicated antibodies (RKIP, Presenilin-1, Presenilin-2, PEN2, or Nicastrin). The expression level of each protein was quantified and represented graphically (*below graph*). (B) Expression of γ -secretase complex proteins in RKIP-knocked down H1299 cells. Total cell extracts of H1299 cells infected with Ad-GFP or Ad-shRKIP were subjected to western blot analysis using the indicated antibodies. The expression level of each protein was quantified and represented graphically (*below graph*).