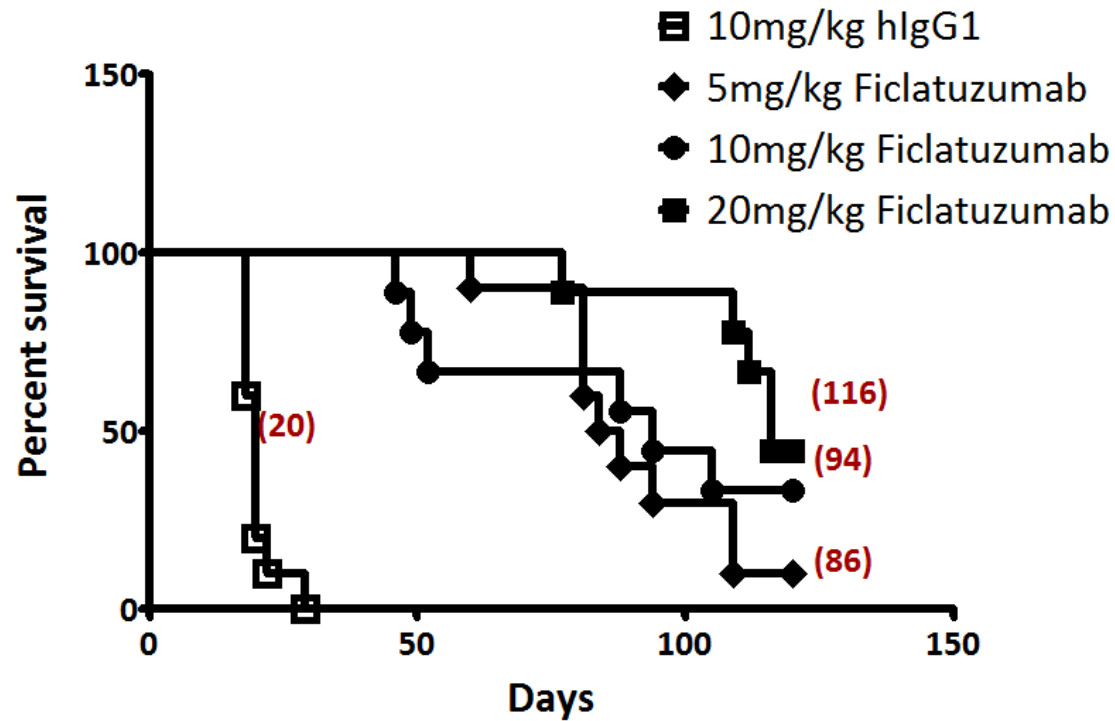


Supplementary Figure 1



Longrank test with Bonferroni corrected threshold for P value

Control vs All groups

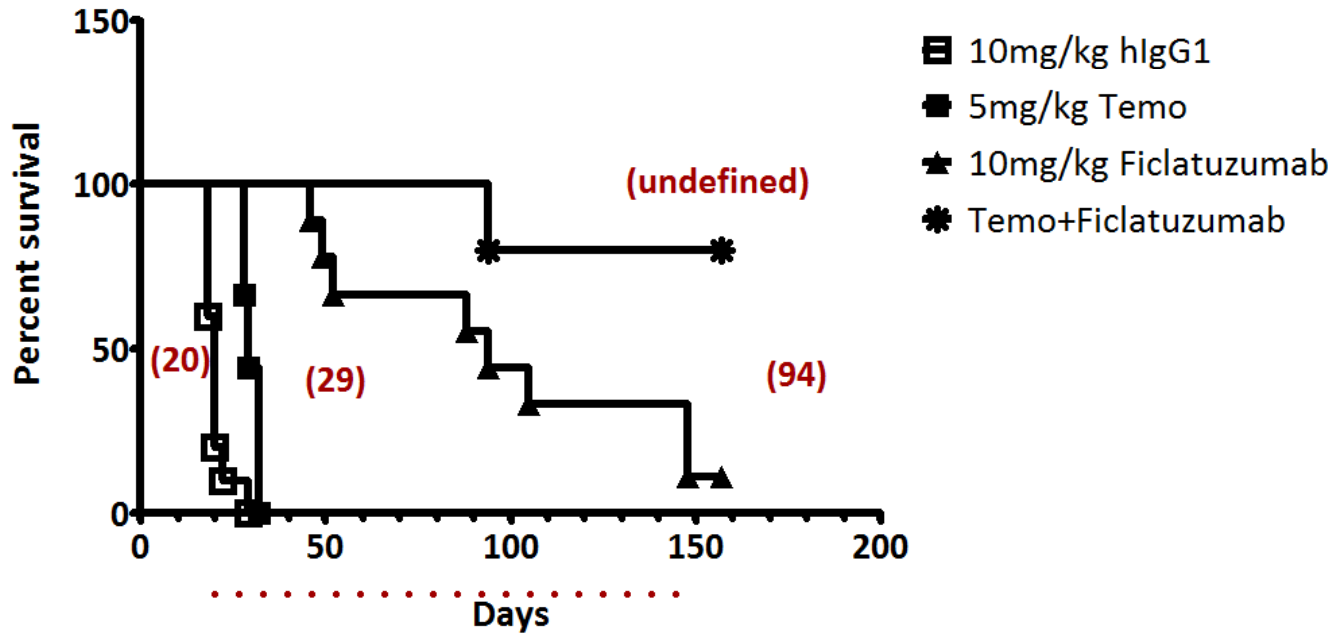
***P<0.0001

5mg/kg Ficlatusumab vs 10mg/kg Ficlatusumab P = 0.5205

5mg/kg Ficlatusumab vs 20mg/kg Ficlatusumab P = 0.0137

10mg/kg Ficlatusumab vs 20mg/kg Ficlatusumab P = 0.2521

Supplementary Figure 2



Longrank test with Bonferroni corrected threshold for P value

Control vs All groups

***P<0.0001

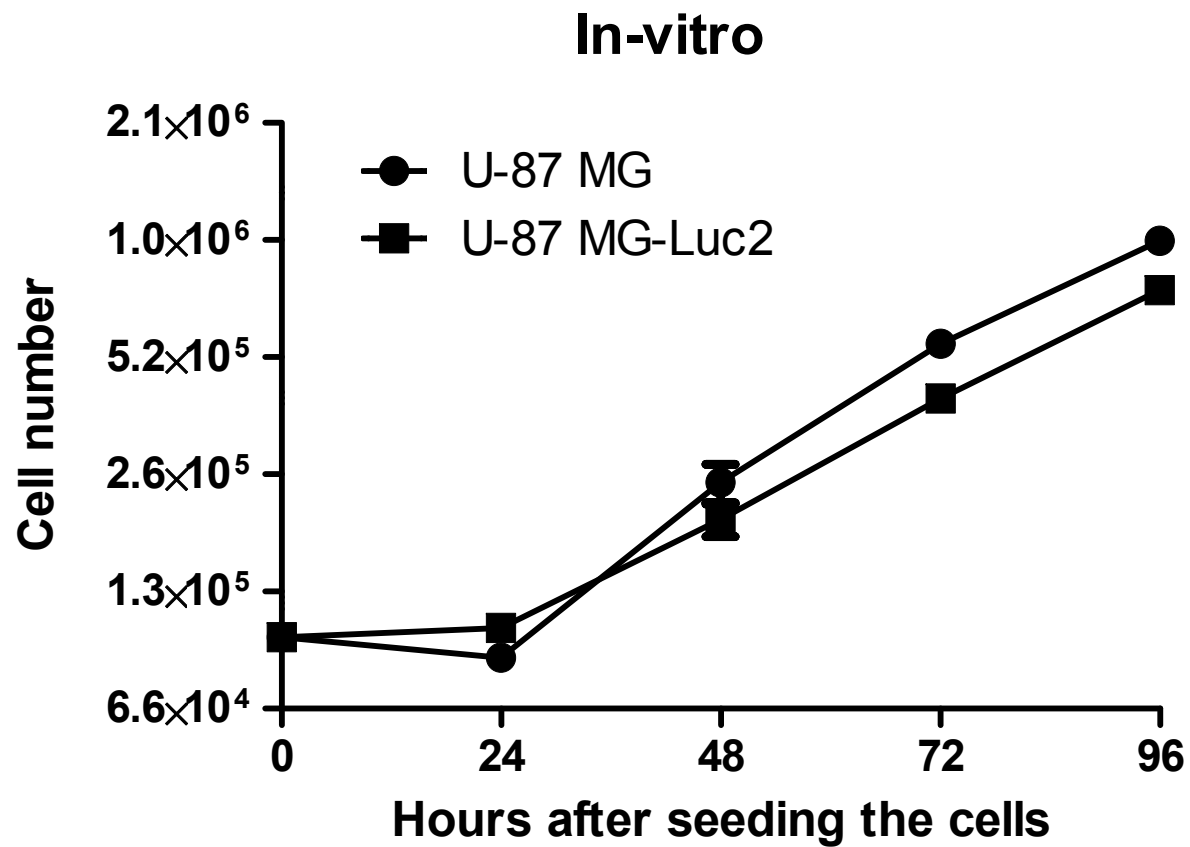
Ficlatusumab alone vs Temo+Ficlatusumab

P = 0.0259

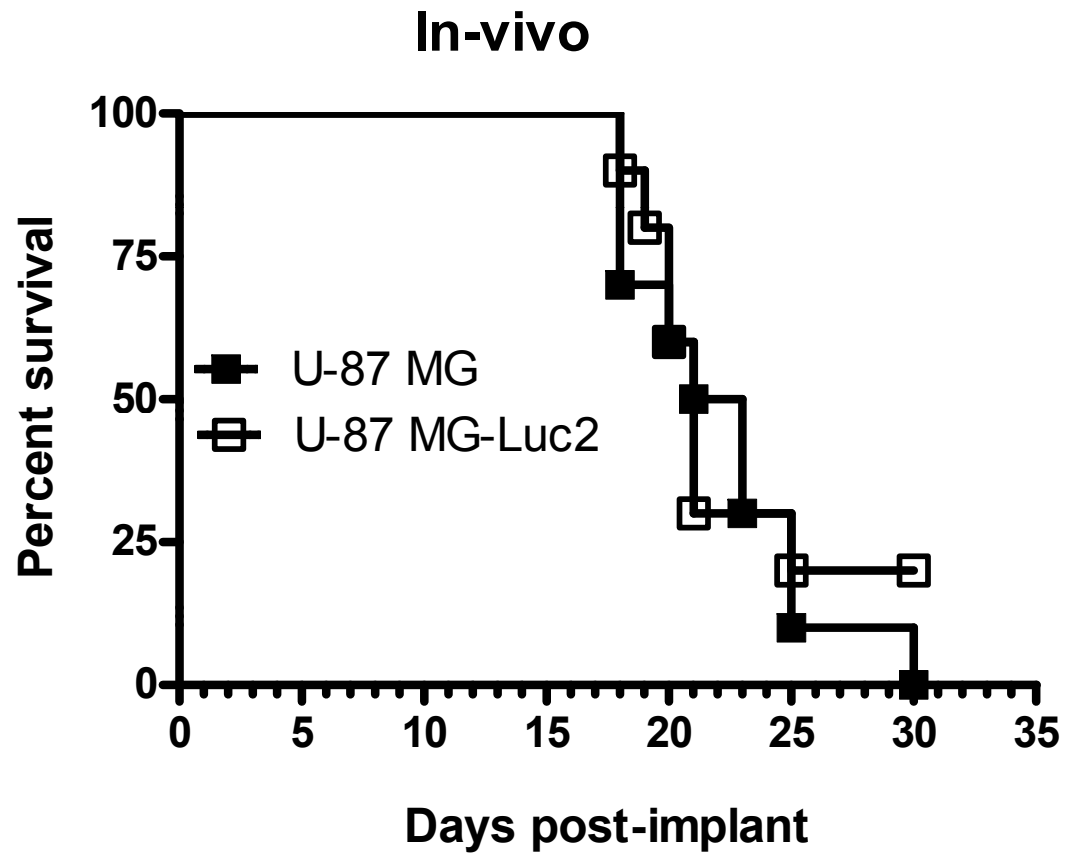
Temo alone vs Temo+Ficlatusumab

***P<0.0001

Supplementary Figure 3a



Supplementary Figure 3b



Supplementary Figure 4

