

## Rosa26-targeted sheep gene knock-in via CRISPR-Cas9 system

### Authors

Mingming Wu, Caihong Wei, Zhengxing Lian, Ruizao Liu, Caiye Zhu, Huihua Wang, Jiaxue Cao, Yuelei Shen, Fuping Zhao, Li Zhang, Zhu Mu, Yayu Wang, Xiaogang Wang, Lixin Du, Chuduan Wang.

### Supplementary information

Table S1. Sheep Rosa26 sequence

```
GTCGTGAGGGTAGGTCTCTCTTTTCTGTTGGACCCTTACCTTGTCCCAGGCCTGGGCCCGGGCTGCGGCGCAC
GGCACTCCCGGGAGGCAGCAGGACTCGAGTTAGGCCCAACGCGGCCACGGCGTTTTCTGGCCGGAATGG
CCCGTGCCCGTGAGGTGGGGTGGGGGGCAGAAAGCGGAGCGAGCCAAAGGCGGGGAGGGGGAAGGGCC
AGGGAAGGAGGGAGGGCCGGCACTACAGTGTGGCGGACTGGCGGGACTGGGGCTGCGTGAGTCTCTGAGC
GCAGGCGGGCGGCGCCGCCCTCCCCGGCGGCGGCGGCGGCGGGCGGTAGCAGCTACTCAGCCCGCTG
CCCGAGCGGAAACGCCACTGACCGCACGGGGATTCCAGCGCCGGCGCCAGGGGCACCCGGGACACGCCCC
CTCCCGCCGCGCCATTGCCCCCTCCGCCACCGCCCCGCACCCATTGGCCAACCTCGCTGCCAATCAGCGGAA
GCCGCGGGGCCACCTAGAGAAGAGGCTGTGCTCTGGGGCTCCGGCTCCTCAGAGAGCCTCGGCTAGGTAGG
GGAGCGGAACTCTGGTGGGAGGGGTCCGGCGGATTGGTGGGGGATGGGTGGCTGAGGTCGTCTGGCCGG
TATCTGGGGTGCCTTCCCCGGTGGGAAGACGGGAGCATAGCGTTTGTACGCTGAAAGGGAAAGAGGTGGT
CAGAGGCAGGCGAGAGTGGCGCCCCCTTGCGGCAACCGAAGGGGGAGGGAGAAGGGAGCGGAAAAGGCTC
GAATCCGGACGGAGCCATTGCTCCTGCAGAGGGAGGAGCGCTTCCGGCTTTGTCTTGTCACTGATTGGTTGC
TGCTCCTCCCGCGTGTGTGAAAACACAAATGGCGGGTTTTGGTTGGAGTAAAGCGCCTGTCAATTACAGCCTC
GGGAGTGCAGCCGCTAGGGACTCTCGTTTTGCCACTGGGTGGGTGCTTAGGTAGGTAGGGTGGAGAGA
GACTTGGATGAGCAGGCGCGTCCGCCTCCACGGGGAGGTAGGGGTGGGGGTGGGAAGGGAGGGTCAGTG
AAAGTGGCTTCGCGGGGCGTCTACCACCCTCCCCTTCCCTCGGGGGAGTCGGTTTACCCGCCGCTGCTTG
GCTTCGGCATCTGATTGGCTGCTGAAGCTCAGGGAACGGCCCCCTTGTATTGGCTCGGGTCCCAAATGAGCGA
AACCACTGCGCGGGTCCGGCGGGGAGGGGTGCTTGGTACGGTCTCCCCGAGACCCAGCGCCCCAGTGTCTG
GCCCCGGGCCCTGCGCAACGTGGCAGGAAGCGCGCTGGAGGTGGGGCGGACTGCCGGGCCGAGGATT
CTGGGTGGTGGCGATTTCCGGCTCCGCCCTGGGCGCCCGCTGCCTGAAGGACAAGACTAGCCCGACCTGCTCC
TGGACCCGTGGGGCTGAAGGGAGGAGTGGGGTCCGTGCCGCTGGCTTGTGGGTGGGAGGTGCATGTTCTCC
AAAATCGGCGGAGCTGCAATCCTGAGGTGGTGCAGTGGAGGAGGCGGAGAGAAGGCCGCACCCCTTCTCA
GCAGGGGGAGGGGAGTGCCGCAATACCTTTATGGGAGTTCTCTGCTGCCTCCTGCCTCCTAAGGACCGCCCTG
GGCCTAGAAGAATCCCTCCCTCCCCCGCATCTCGTCATCGCCTCCATGTGCGAGTCTCTCCTCGATTATGGGCG
```

GGATTCTTTT GCCAGGCTTAACCTTAATCCTGGGCGTTGCCTGCAGTGGATCCAGCAGGTATAAGATTTAGAG  
 GACGAACCCAATTTCTTTATCTTCCCACAGACTTGAGTTTGTGTACAAAATAATTATAATGGGGTGGTGGAGTG  
 AAATGAAGTCCAGGCAACACCTGGGACTGATTTTATGCAGCGAGACTGCGTGTTACTACTTAACATCCTTTTGT  
 GCATTTTTTCCAGGAGATTGAGAGAGAGGTTAAAAGCTTGATCTCCTGAGTTTTATACTCTCCCGTTTGAGACA  
 GTTGAGAAATAGGTTAAAGGCATGATCTCTTGAGTTCCCATTGAGACCGTTGCTACACCGCCAAAACAGAGC  
 GTCTTAGATTAGATCTTAAAAATTAATTCCCACCCTTGCACTCTCAGAGTCAGGCCTTTTAGCAACTCTCACTC  
 ATACTTTCAGCCATTTTCTGTTTGTATACTTGCTCAGCCTGTCCCAGTCATACCATTGGCTTTCTCCTCTCCTG  
 TTTTGGTATCCCGGTGAGTCATGAACTAGACAGGTTTACCACCAATTAAGGCTACCTAGCTCGAGCATAGGC  
 TTCACTCTTGCCAGCAATGCGTTTATTCCTCTTTTATGGATATTCTTGAGTCTTACCTTGATATTCATTTAATTT  
 TTAACCTCAGCTGGGATTCTACTGTCCCTCTTAGTAGTCCAGATGATCTTGACTACTGCTTTGCTGAGAACTGGA  
 CGTGAGGTTCCAGCAGCATCTTTTTATATCCTTAGAATACCTTTCAATCCATTTTCATTGATATGCTCATCAGTTAG  
 TAATCAAGCTCAGTTGCCATAAGGCTAGTATCCTCCGAAGTAGTATCTTGTGTCTGGTATCTGCTGATACT  
 TTCATGTGTCCAGGACAGTTGTTCTCATACAAAGATACAGCATGGAAGTAACTGATCAACTCCTTTACTGGGTGG  
 TAACTACTGACAGGATGAATTCCATCATCACAAACGTGATGTG

**Figure S1A** Region conserved among mouse, rat, human ,pig and sheep Rosa26

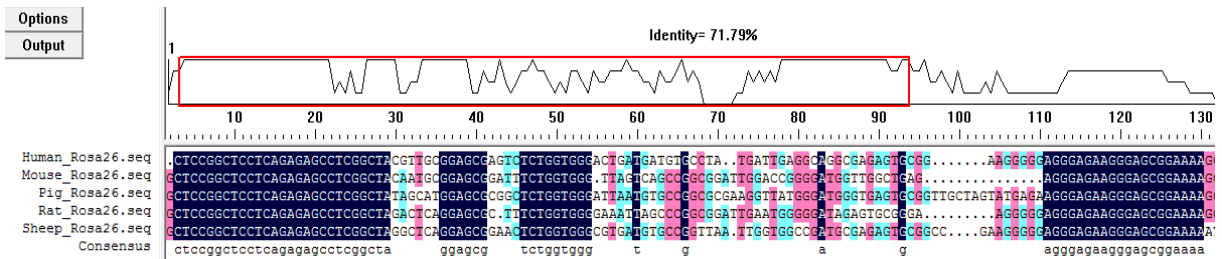
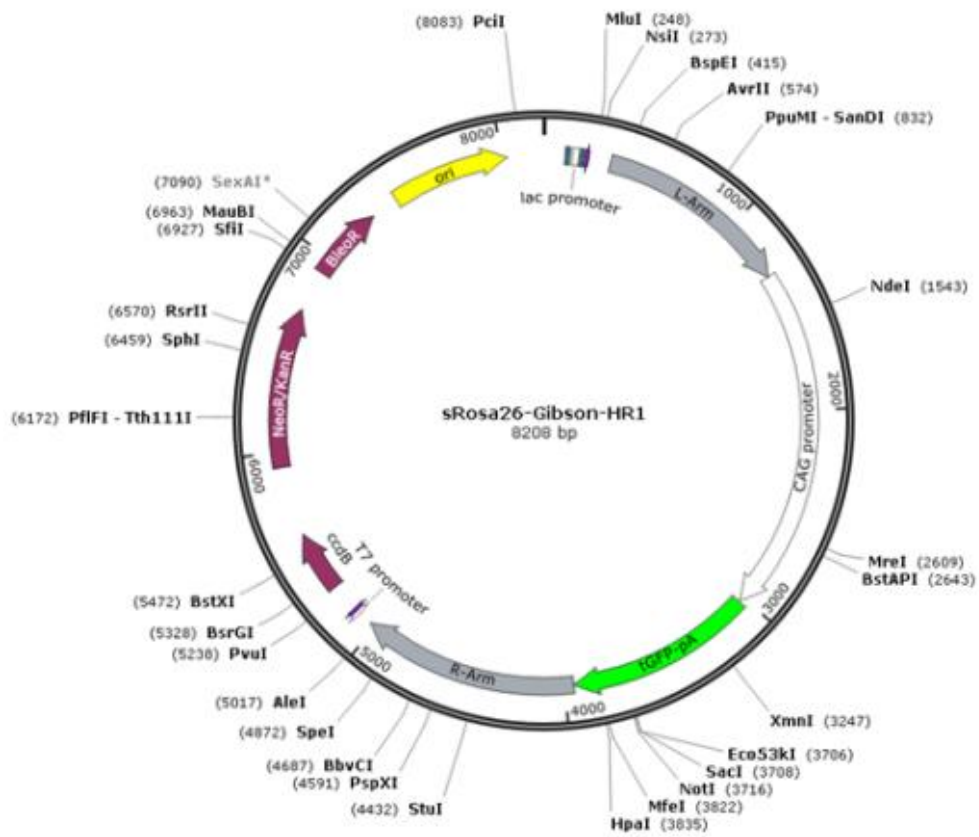


Figure S2 Targeting vector information.



**Table S2. tGFP sequence**

CTAGTTATTAATAGTAATCAATTACGGGGTCATTAGTTCATAGCCCATATATGGAGTTCGCGTTACATAACTTAC  
GGTAAATGGCCCGCTGGCTGACCGCCCAACGACCCCGCCATTGACGTCAATAATGACGTATGTTCCCATAG  
TAACGCCAATAGGGACTTTCATTGACGTCAATGGGTGGAGTATTTACGGTAAACTGCCCACTTGGCAGTACATC  
AAGTGTATCATATGCCAAGTACGCCCCCTATTGACGTCAATGACGGTAAATGGCCCGCTGGCATTATGCCCAG  
TACATGACCTTATGGGACTTTCCTACTTGGCAGTACATCTACGTATTAGTCATCGCTATTACCATGGTGGAGGTG  
AGCCCCACGTTCTGCTTCACTCTCCCCATCTCCCCCCCCCTCCCCACCCCAATTTTGTATTTATTTATTTTAAAT  
TATTTTGTGCAGCGATGGGGGCGGGGGGGGGGGGGGGGGCGCGCCAGGCGGGGCGGGGCGGGGCGAGG  
GGCGGGGCGGGGCGAGGCGGAGAGGTGCGGCGGCAGCCAATCAGAGCGGCGCGCTCCGAAAGTTTCCTTTT  
ATGGCGAGGCGGCGGCGGCGGCCCTATAAAAAGCGAAGCGCGCGGGCGGGGAGTCGCTGCGACG  
CTGCCCTTCGCCCCGTGCCCGCTCCGCGCGCGCTCGCGCCGCCCGCCCCGGCTCTGACTGACCGCGTACT  
CCCACAGGTGAGCGGGCGGGACGGCCCTTCTCCTCCGGGCTGTAATTAGCGCTTGGTTAATGACGGCTTGT  
TCTTTTCTGTGGCTGCGTGAAAGCCTTGAGGGGCTCCGGGAGGGCCCTTTGTGCGGGGGGAGCGGCTCGGGG  
GGTGCCTGCGTGTGTGTGCGTGGGGAGCGCCGCTGCGGCTCCGCGCTGCCCGGCGGCTGTGAGCGCTG  
CGGGCGCGGCGCGGGGCTTTGTGCGCTCCGCAGTGTGCGGAGGGGAGCGCGGCCGGGGGCGGTGCCCCG  
CGGTGCGGGGGGGCTGCGAGGGGAACAAAGGCTGCGTGCGGGGTGTGTGCGTGGGGGGGTGAGCAGGGG  
GTGTGGGCGCGTCCGTCCGGGCTGCAACCCCCCTGCACCCCCCTCCCCGAGTTGCTGAGCACGGCCCCGGCT  
CGGGTGCGGGGCTCCGTACGGGGCGTGGCGCGGGGCTCGCCGTGCCGGGCGGGGGGTGGCGGCAGGTGGG  
GGTGC CGGGCGGGGCGGGGCCCTCGGGCCGGGAGGGCTCGGGGGAGGGGCGCGGCGGCCCGGGAG  
CGCCGGCGGCTGTGAGGCGCGGCGAGCCGAGCCATTGCCTTTTATGGTAATCGTGCAGAGGGCGCAGGG  
ACTTCCTTTGTCCAAATCTGTGCGGAGCCGAAATCTGGGAGGCGCCGCCGACCCCTCTAGCGGGCGCGG  
GGCGAAGCGGTGCGGCGCCGGCAGGAAGGAAATGGGCGGGGAGGGCCTTCGTGCGTCGCCGCGCCGCGTC  
CCCTTCTCCCTCTCCAGCCTCGGGGCTGTCCGCGGGGGGACGGCTGCCTTCGGGGGGACGGGGCAGGGCG  
GGTTTCGGCTTCTGCGTGTGACCGGCGGCTCTAGAGCCTCTGCTAACCATGTTTCATGCCTTCTCTTTTCTTA  
CAGCTCCTGGGCAACGTGCTGGTTATTGTGCTGTCTCATCATTTTGGCAAAGAATTACAACC

Figure S3. The PCR result of the tGFP gene knock in sRosa26 locus

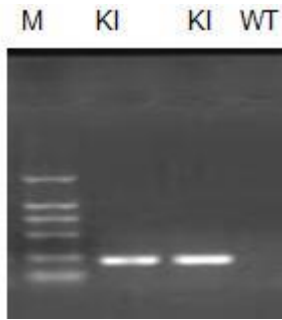


Figure S4. The sRosa26 locus sequencing of tGFP-KI sheep.

