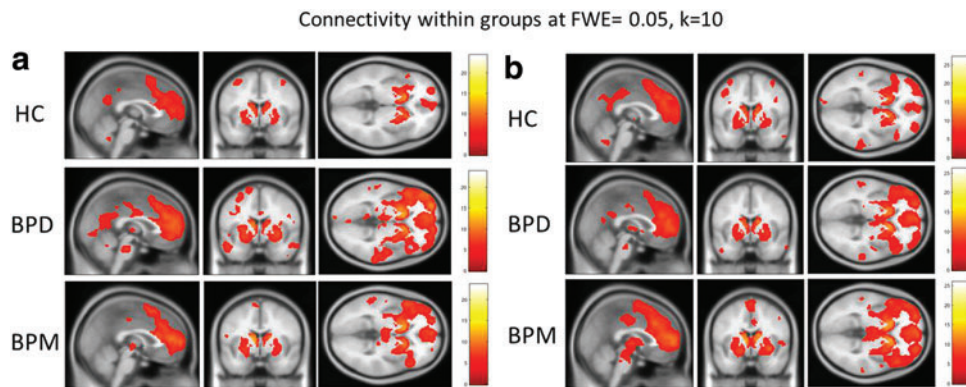
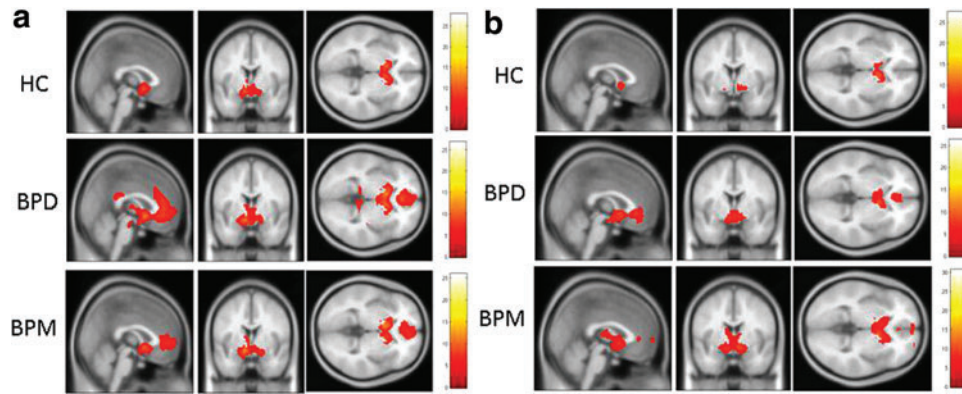


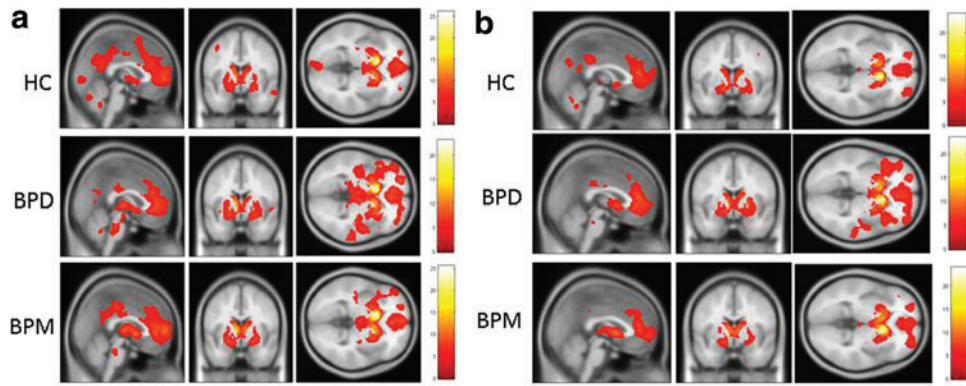
Supplementary Data



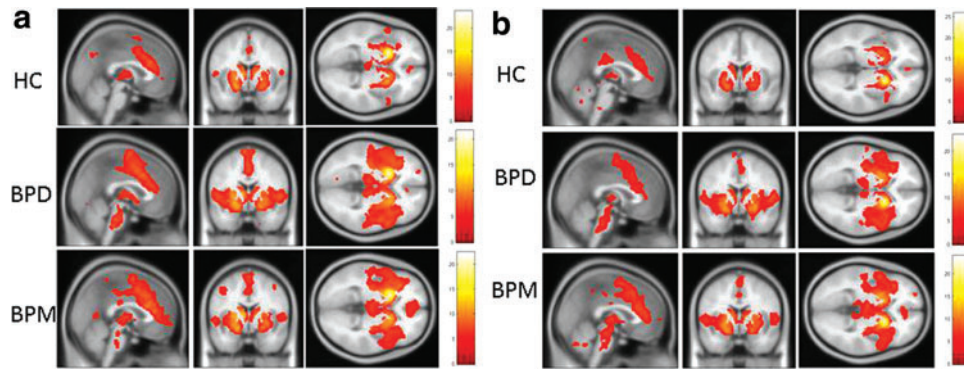
SUPPLEMENTARY FIG. S1. DC connectivity at voxelwise FWE corrected $p=0.05$, $k=10$. **(a)** Left DC connectivity within groups at FWE=0.05, $k=10$. **(b)** Right DC connectivity within groups at FWE=0.05, $k=10$. DC, dorsal caudate; FWE, family-wise-error.



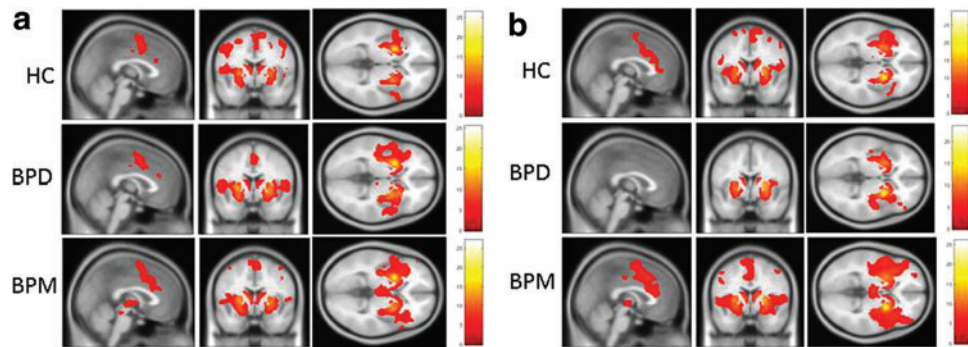
SUPPLEMENTARY FIG. S2. VSI (ventral caudate/nucleus accumbens) connectivity at voxelwise FWE corrected $p=0.05$, $k=10$. **(a)** Left VSI (ventral caudate/nucleus accumbens inferior) connectivity within groups at FWE=0.05, $k=10$. **(b)** Right VSI (ventral caudate/nucleus accumbens inferior) connectivity within groups at FWE=0.05, $k=10$. VSI, ventral striatum inferior.



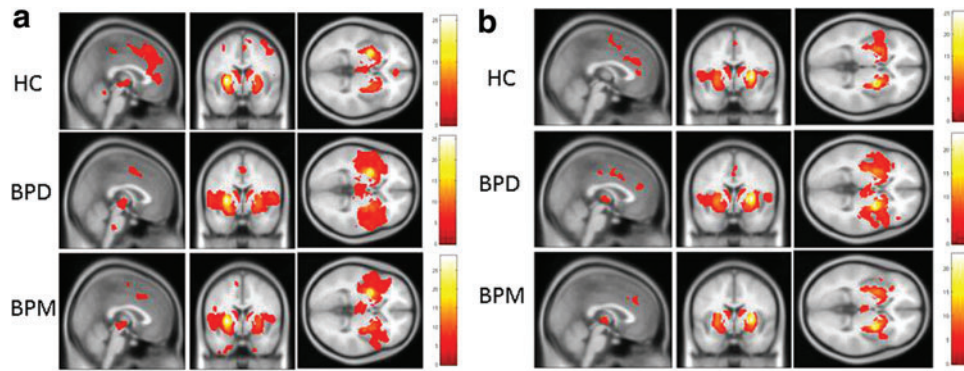
SUPPLEMENTARY FIG. S3. VSS connectivity at FWE voxelwise corrected $p=0.05$, $k=10$. **(a)** Left VSS (ventral caudate superior) connectivity within groups at FWE=0.05, $k=10$. **(b)** Right VSS (ventral caudate superior) connectivity within groups at FWE=0.05, $k=10$. VSS, ventral striatum superior.



SUPPLEMENTARY FIG. S4. VRP connectivity at voxelwise FWE corrected $p=0.05$, $k=10$. **(a)** Left VRP connectivity within groups at FWE=0.05, $k=10$. **(b)** Right VRP connectivity within groups at FWE=0.05, $k=10$. VRP, ventral rostral putamen.



SUPPLEMENTARY FIG. S5. DRP connectivity at voxelwise FWE corrected $p=0.05$, $k=10$. **(a)** Left DRP connectivity within groups at FWE=0.05, $k=10$. **(b)** Right DRP connectivity within groups at FWE=0.05, $k=10$. DRP, dorsal rostral putamen.



SUPPLEMENTARY FIG. S6. DCP connectivity at voxelwise FWE corrected $p=0.05$, $k=10$. **(a)** Left DCP connectivity within groups at FWE=0.05, $k=10$. **(b)** Right DCP connectivity within groups at FWE=0.05, $k=10$. DCP, dorsal caudal putamen.