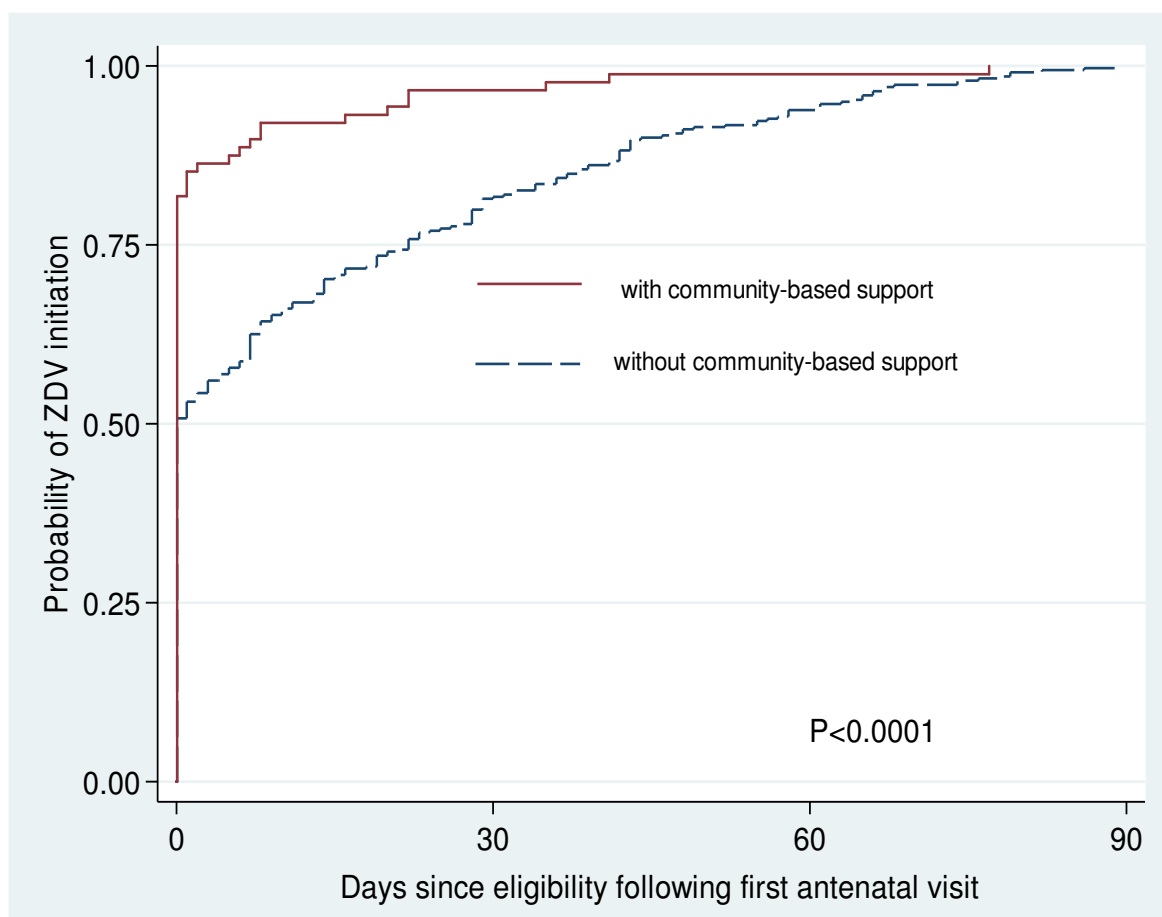


## **Summary of antiretroviral treatment initiation criteria for pregnant women and prevention of mother to-child transmission of HIV regimens**

Prior to April 2010, HIV-positive pregnant women with CD4 cell counts  $\leq 200$  cells/ $\mu$ L or World Health Organization (WHO) clinical stage IV were eligible to start lifelong triple ART. Women eligible for ART were referred to a dedicated ART clinic within the same facility. Pregnant women ineligible for ART were to receive antenatal zidovudine (ZDV) from 28 weeks gestation and intrapartum single dose nevirapine (sdNVP).<sup>1</sup> From April 2010, ART eligibility criteria for pregnant women were expanded to include women with CD4 cell counts  $\leq 350$  cells/ $\mu$ L or WHO clinical stages III or IV. Women ineligible for ART were to receive antenatal ZDV from 14 weeks gestation and intrapartum sdNVP.<sup>2</sup>

### **References:**

1. South African National Department of Health. (2008). Policy and guidelines for the implementation of the PMTCT programme. Pretoria, South Africa.
2. South African National Department of Health. (2010). Clinical guidelines: prevention of mother-to-child transmission. Pretoria, South Africa.



**Kaplan-Meier estimates of time till initiation of antenatal zidovudine (ZDV) since eligibility (following first antenatal visit) amongst pregnant women initiating ZDV in South Africa.**

**Antenatal characteristics of HIV-positive pregnant women who received and did not receive community-based support (CBS) in South Africa**

	<b>Received CBS</b>	<b>Did not receive CBS</b>	<b>P-value</b>
<b>Age at first antenatal visit, median, years (IQR)</b> (n=1105)	28.2 (23.3-32.7)	27.4 (23.8-32.1)	0.77
<b>Adolescents (aged &lt;20 years), n (%)</b> (n=1105)	19 (7.2%)	57 (6.8%)	0.96
<b>Known HIV positive at first antenatal visit, n (%)</b> (n=1105)	135 (51.1%)	430 (51.1%)	0.99
<b>Recorded CD4 cell count result, n (%)</b> (n=1105)	263 (99.6%)	806 (95.8%)	0.003
<b>CD4 cell count at first antenatal visit, cells/<math>\mu</math>L, median (IQR)</b> (n=1069)	305 (206-480)	361(237-503)	0.010
<b>CD4 cell count &lt; 200 cells/<math>\mu</math>L, n (%)</b>	61 (23.2%)	147 (18.2%)	0.078
<b>Year of first antenatal visit, n (row %)</b>			<0.001
<b>2009-2010</b>	305 (90.8%)	31 (9.1%)	
<b>2011-2012</b>	533 (69.6%)	233 (30.4%)	
(n=1105)			
<b>Gestational age at first antenatal visit, median, weeks, (IQR)</b> (n=861)	22 (16-26)	22 (17-26)	0.96

<b>Feeding choice elected by pregnant women</b>			0.035
<b>breastfeeding</b>	133 (64.3%)	448 (56.1%)	
<b>formula feeding</b>	74 (38.8%)	350 (43.9%)	
(n=1005)			
<b>Initiation of antenatal retrovirals, n (%)</b>			<0.0001
<b>on lifelong ART at first antenatal visit</b>	65 (24.6%)	122 (14.5%)	
<b>initiated triple ART antenatally</b>	106 (40.2%)	202 (24.0%)	
<b>initiated antenatal ZDV</b>	87 (33.0%)	393 (46.7%)	
<b>received sdNVP in labour only</b>	2 (0.8%)	25 (3.0%)	
<b>nil</b>	4 (1.5%)	99 (11.8%)	

ART-antiretroviral treatment; ZDV-zidovudine; sdNVP-single dose nevirapine; IQR-interquartile range