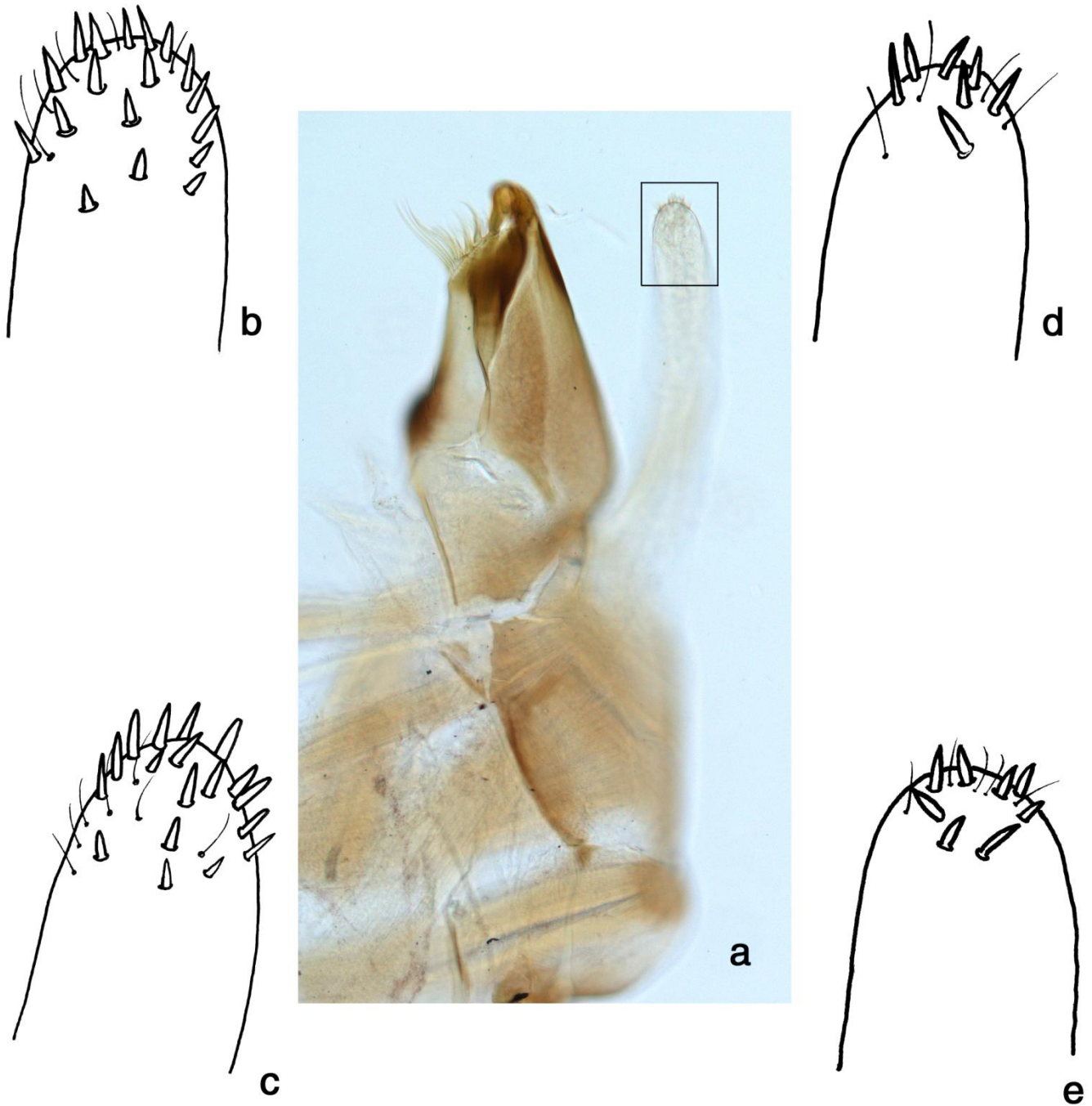
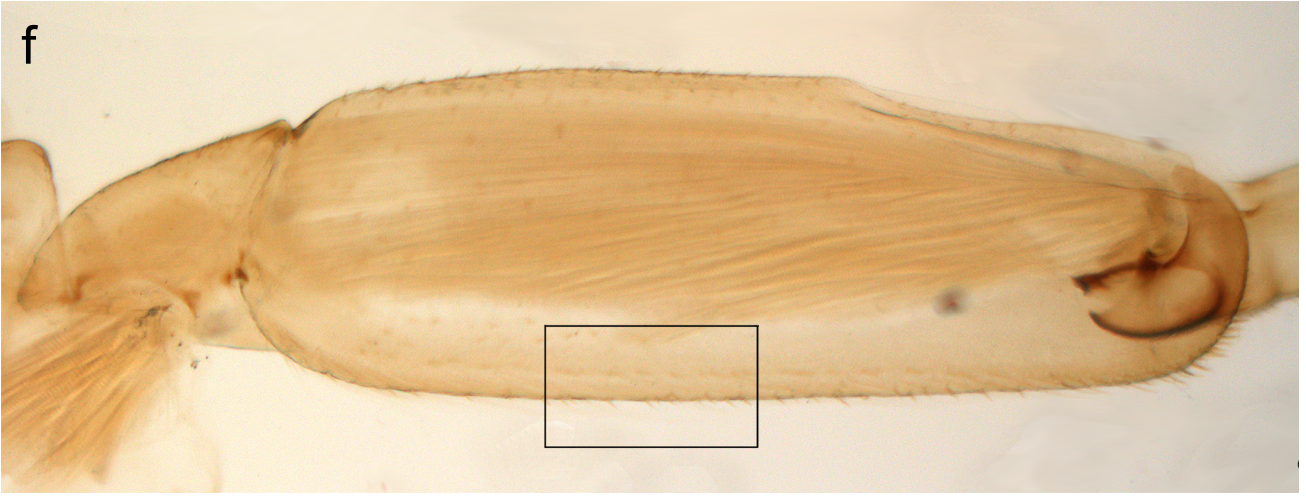


Additional file 6. Morphological analysis of *B. alpinus* lineage larval structures.

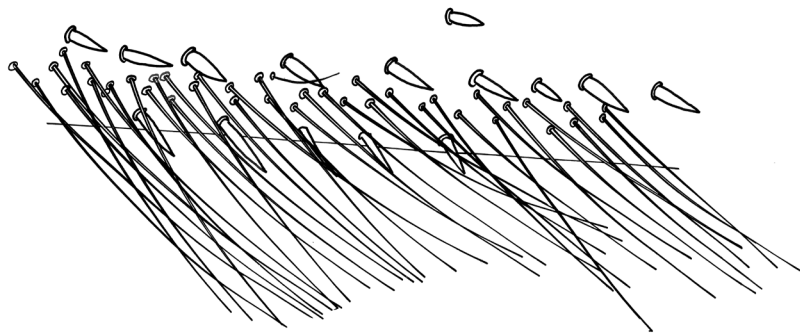
The upper image shows (a) the maxilla and the apex of the maxillary palp (black box). The number and distribution of setae at the apex of the maxillary palp is visualized for lineage A (right: b and, left: c) and lineage B (right: d and, left: e). The bottom image shows (f, h) the femora and its dorsal margin (black box). The number of rows of setae on the dorsal margin of the femora is visualized for lineage A (g) and lineage B (i).



f



g



h



i

