

Fig. S1 Expression of HCA587/MAGE-C2 in human hepatocellular carcinoma (HCC) tissues. (A) RT-PCR analysis of HCA587/MAGE-C2 expression in 42 HCC and corresponding adjacent normal tissues. β -actin was used as an internal control. (B) Analysis of relative expression of miR-874 (ca/adj) in HCA587/MAGE-C2 positive and negative groups. (mean \pm S.D.)

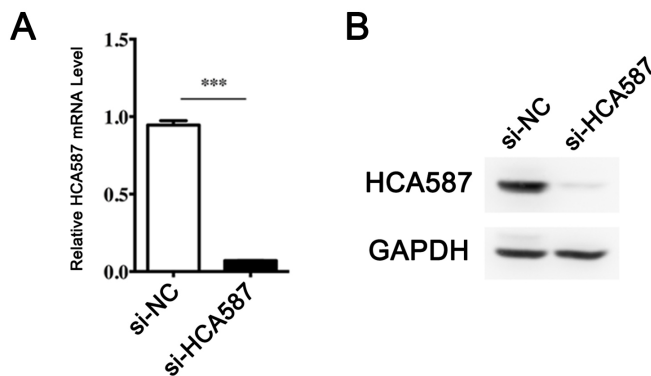


Fig. S2 Knockdown efficiency of si-HCA587/MAGE-C2 in A375 cells. (A) Quantitative RT-PCR analyses of HCA587 expression in A375 cells transfected with si-NC or si-HCA587/MAGE-C2. (B) Western blot analyses of HCA587 expression in A375 cells transfected with si-HCA587/MAGE-C2 or si-NC.