

Tuning of AKT-pathway by Nef and its blockade by protease inhibitors

results in limited recovery in latently HIV infected T-cell line

Amit Kumar¹⁺, Wasim Abbas¹⁺, Laurence Colin²⁺, Kashif Aziz Khan¹, Sophie Bouchat², Audrey Varin¹, Anis Larbi³, Jean-Stéphane Gatot², Kabamba Kabeya⁴, Caroline Vanhulle², Nadège Delacourt², Sébastien Pasquereau¹, Laurie Coquard¹, Alexandra Borch⁵, Renate König^{5,6}, Nathan Clumeck⁴, Stéphane De Wit⁴, Olivier Rohr⁷, Christine Rouzioux⁸, Tamas Fulop Jr³, Carine Van Lint^{2++*}, Georges Herbein^{1+++*}

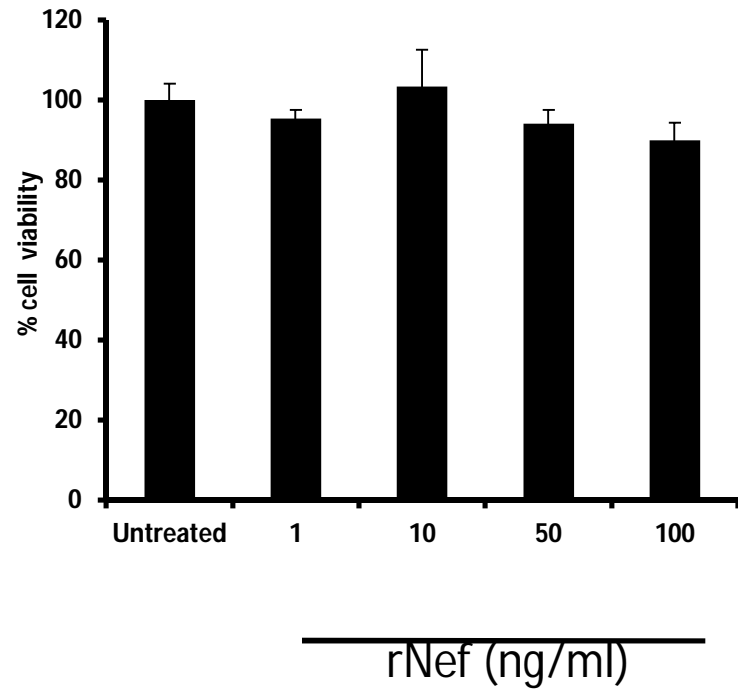
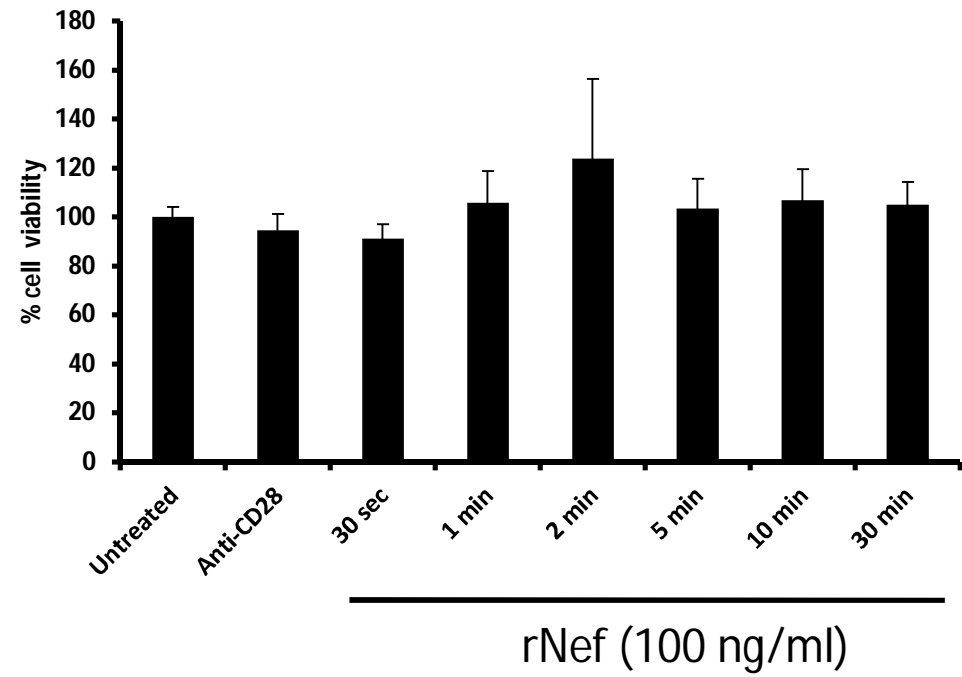
¹ Department of Virology, Pathogens & Inflammation Laboratory, University of Franche-Comté and COMUE Bourgogne Franche-Comté University, UPRES EA4266, SFR FED 4234, CHRU Besançon, Besançon, France, ² Laboratory of Molecular Virology, Institut de Biologie et de Médecine Moléculaires (IBMM), Université Libre de Bruxelles (ULB), Gosselies, Belgium, ³Department of Medicine, University of Sherbrooke, Sherbrooke, Canada, ⁴Department of Infectious Diseases, CHU St-Pierre, ULB, Bruxelles, Belgium,⁵Research Group "Host-Pathogen Interactions", Paul-Ehrlich-Institute, Langen, Germany; ⁶Immunity and Pathogenesis Program, Sanford Burnham Prebys Medical Discovery Research Institute, La Jolla, CA; German Center for Infection Research (DZIF), Langen, Germany,⁷Institut de Parasitologie et Pathologie Tropicale, University of Strasbourg, Strasbourg, France, and ⁸Department of Virology, Paris University, EA7327 Paris Descartes, APHP Necker Hospital, Paris, France.

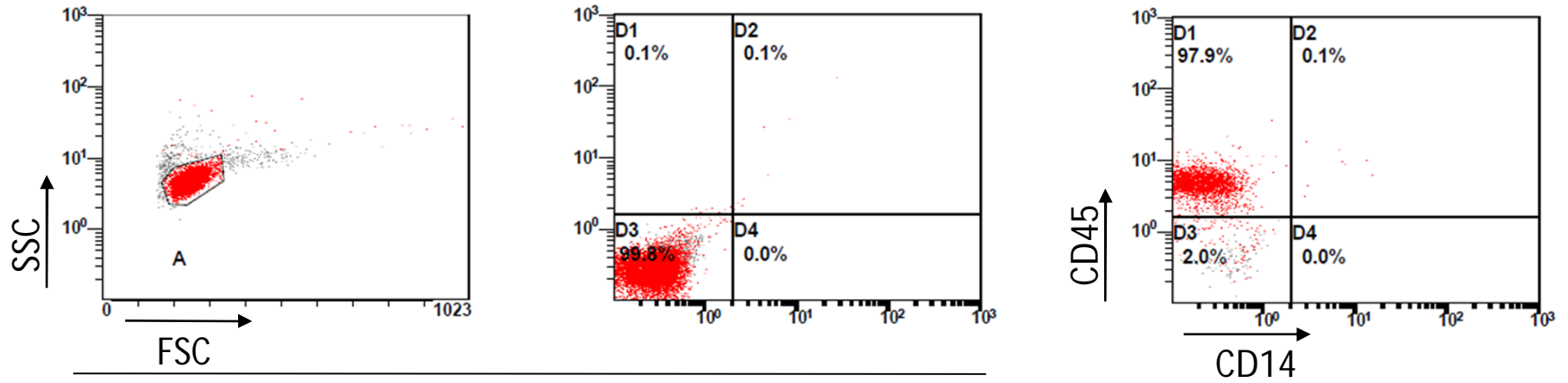
* Correspondence to: Dr Georges Herbein, Department of Virology, University of Franche-Comté and COMUE Bourgogne Franche-Comté University, CHRU Besançon, Hôpital Saint-Jacques, 2 place Saint-Jacques, F-25030 Besançon cedex, France Ph. +33 381 218 877; Fax +33 381 665 695; E-mail: georges.herbein@univ-fcomte.fr

Or Dr Carine Van Lint, Laboratory of Molecular Virology, Institut de Biologie et de Médecine Moléculaires (IBMM), Université Libre de Bruxelles (ULB), rue des Profs Jeener et Brachet 12, 6041 Gosselies, Belgium. Ph. +32 2650 98 07; Fax + 32 2650 98 00; E-mail: cylint@ulb.ac.be

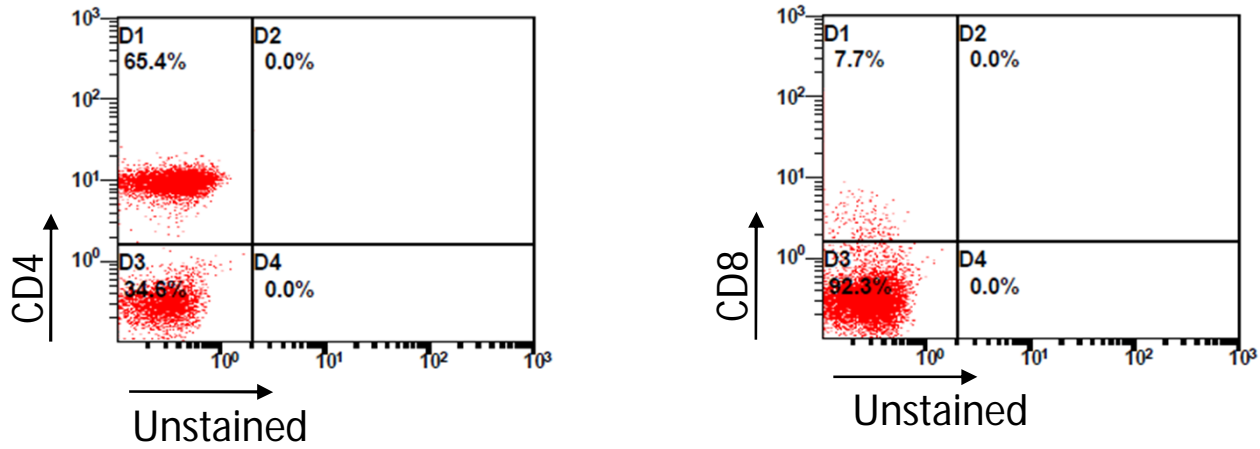
⁺ AK, WA and LC, ⁺⁺ GH and CVL contributed equally to the work.

Running Head: HIV and Akt signaling in T-cells

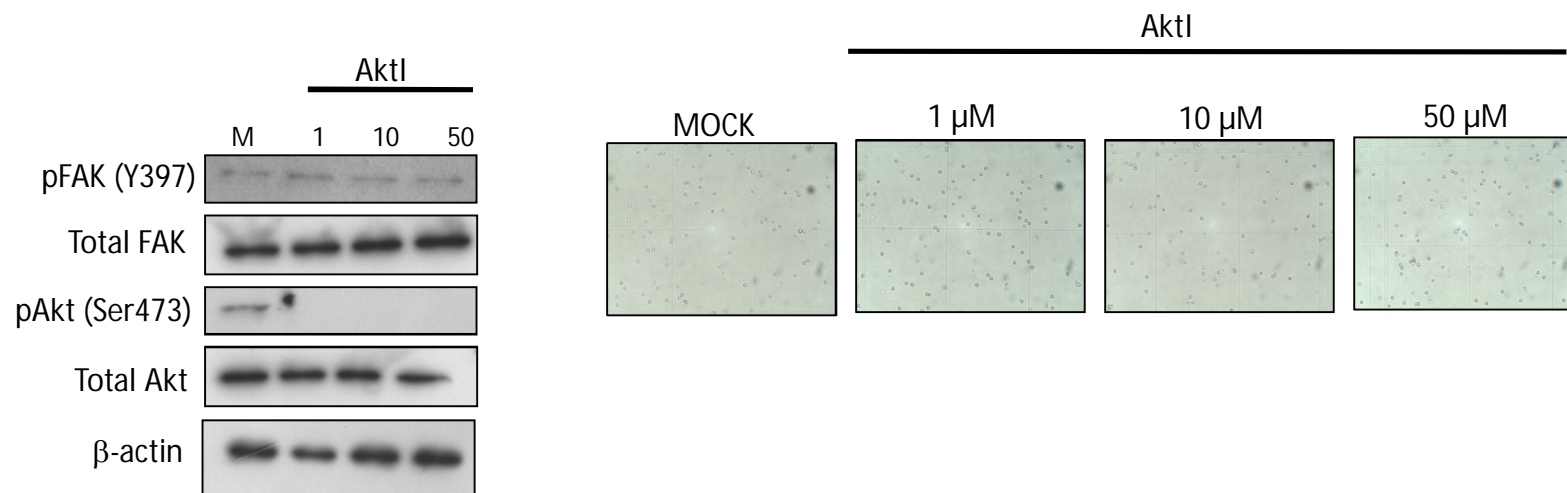
A**B****Supplementary Figure 1**



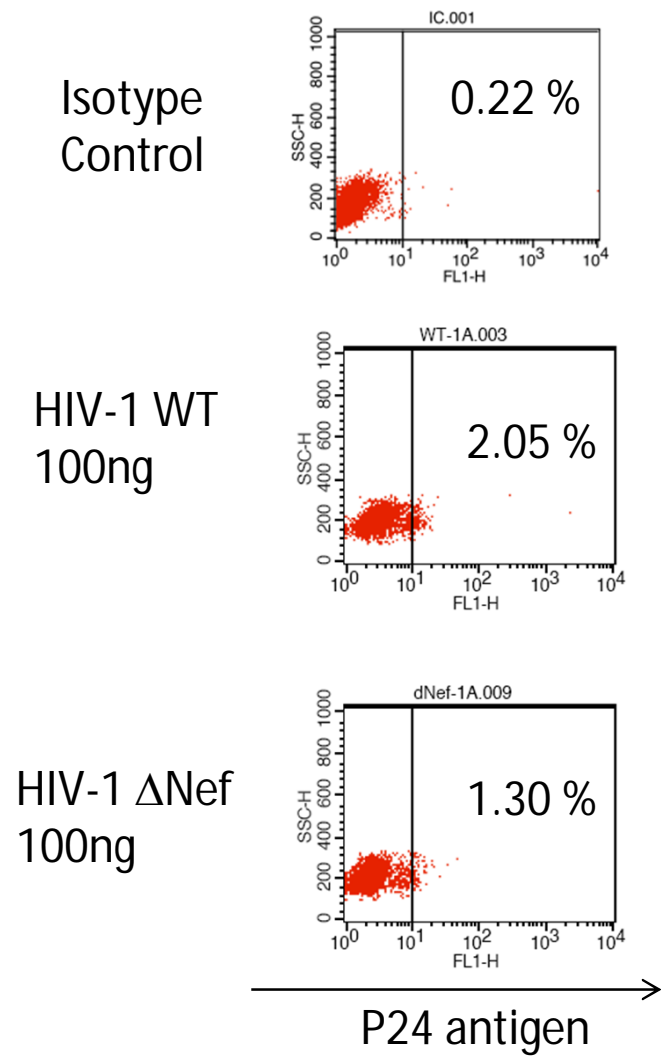
Isotype Control



Supplementary Figure 2

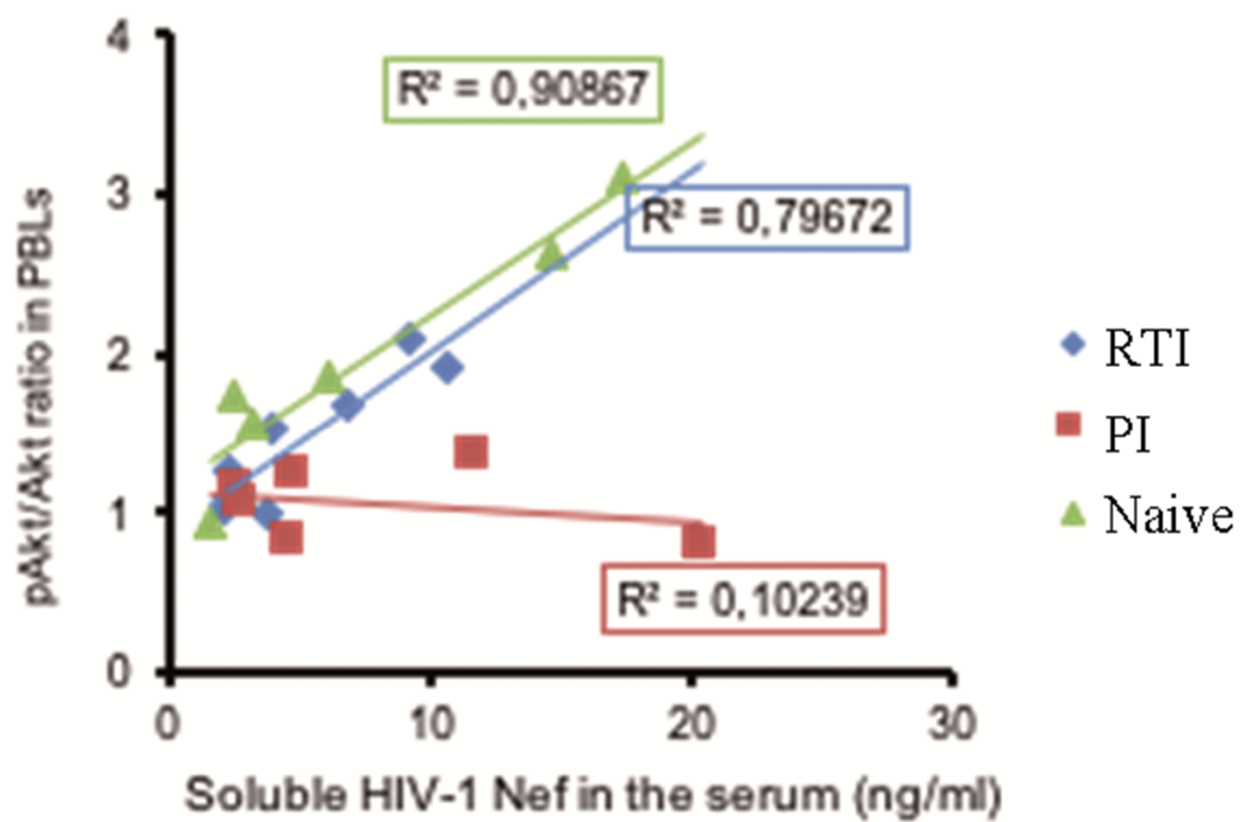


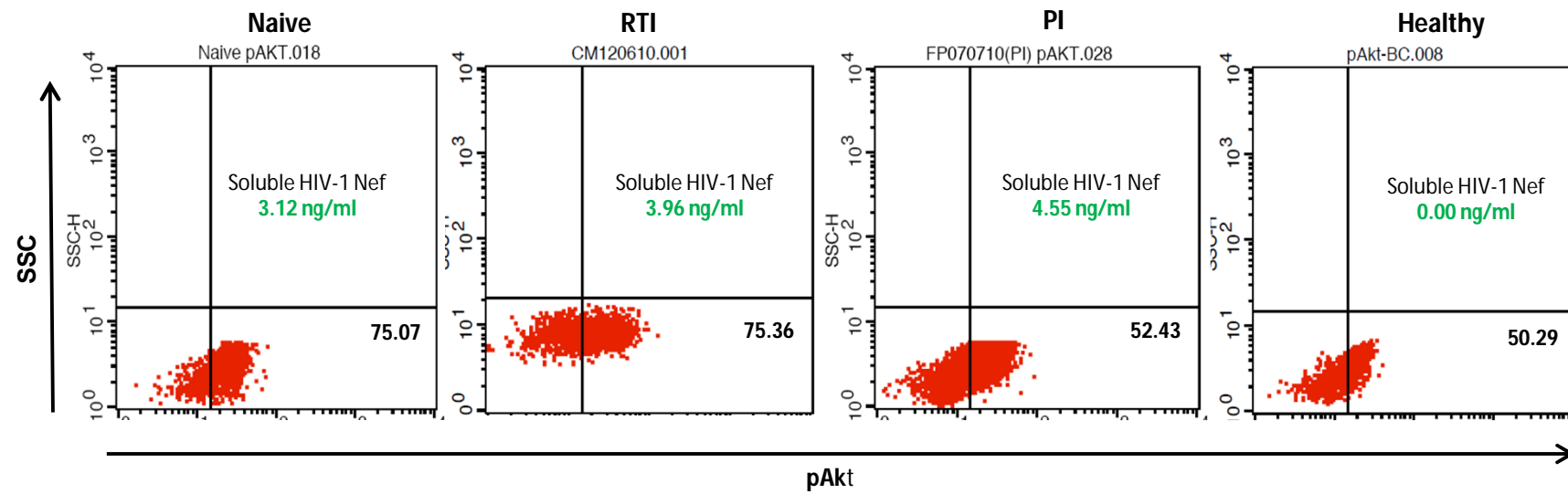
Supplementary Figure 3



Data obtained from CD4+ T cells 24 hours after infection

Supplementary Figure 4





Supplementary Figure 6