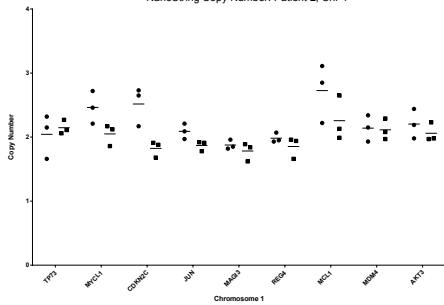


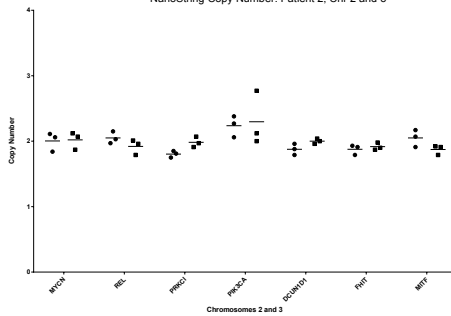
● focus 1 (3 punches)
■ focus 2 (3 punches)

NanoString Copy Number: Patient 2, Chr 1



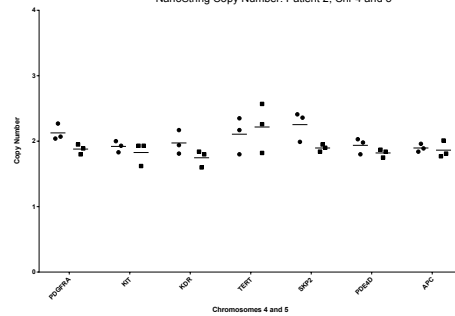
● focus 1 (3 punches)
■ focus 2 (3 punches)

NanoString Copy Number: Patient 2, Chr 2 and 3



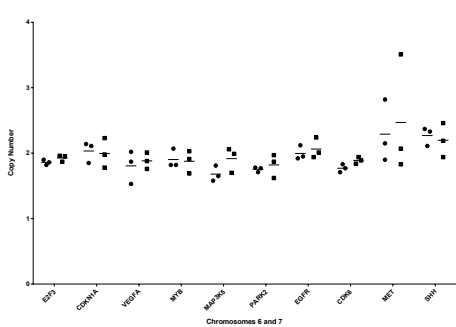
● focus 1 (3 punches)
■ focus 2 (3 punches)

NanoString Copy Number: Patient 2, Chr 4 and 5



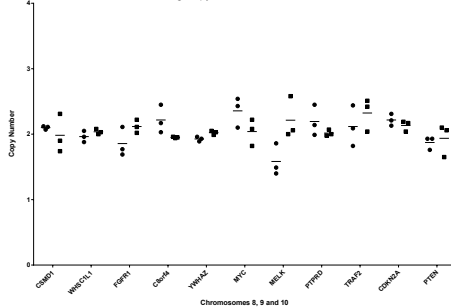
● focus 1 (3 punches)
■ focus 2 (3 punches)

NanoString Copy Number: Patient 2, Chr 6 and 7



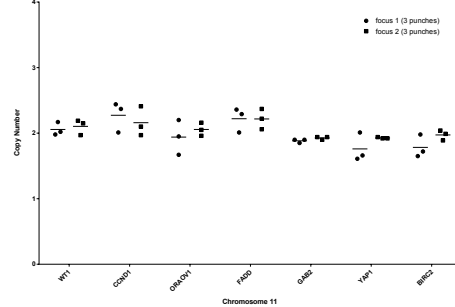
● focus 1 (3 punches)
■ focus 2 (3 punches)

NanoString Copy Number: Patient 2, Chr 8, 9 and 10



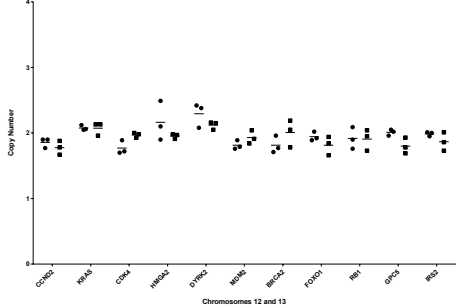
● focus 1 (3 punches)
■ focus 2 (3 punches)

NanoString Copy Number: Patient 2, Chr 11



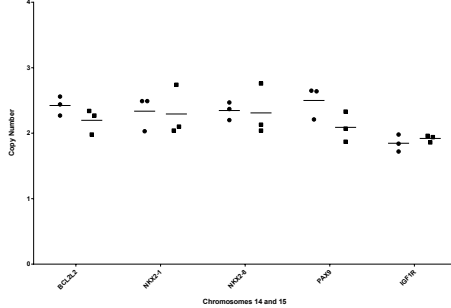
● focus 1 (3 punches)
■ focus 2 (3 punches)

NanoString Copy Number: Patient 2, Chr 12 and 13



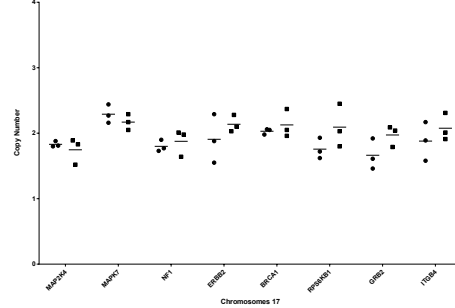
● focus 1 (3 punches)
■ focus 2 (3 punches)

NanoString Copy Number: Patient 2, Chr 14 and 15



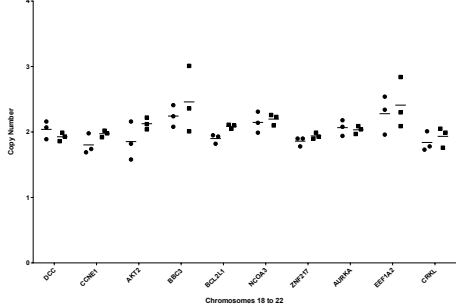
● focus 1 (3 punches)
■ focus 2 (3 punches)

NanoString Copy Number: Patient 2, Chr 17



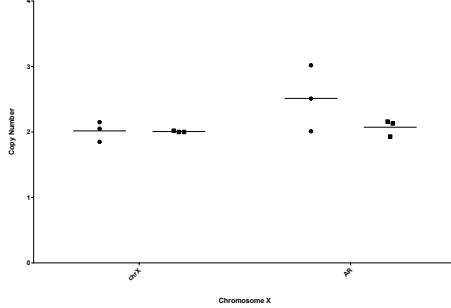
● focus 1 (3 punches)
■ focus 2 (3 punches)

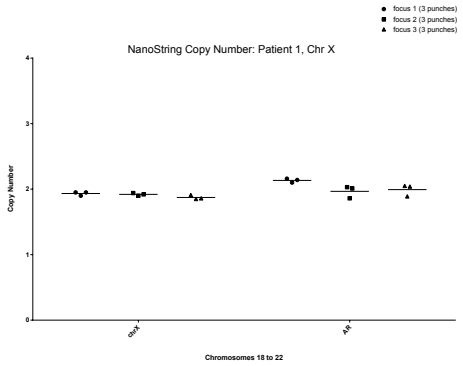
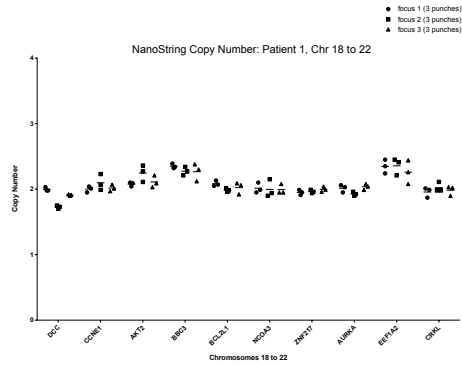
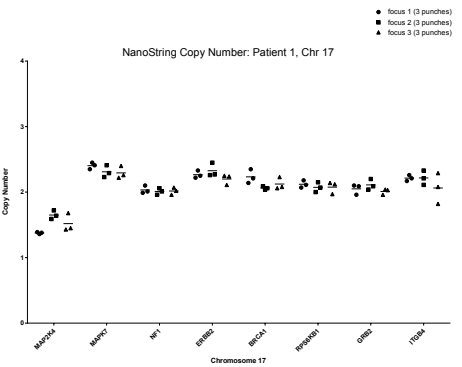
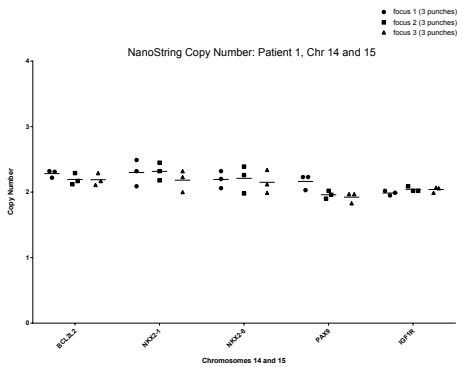
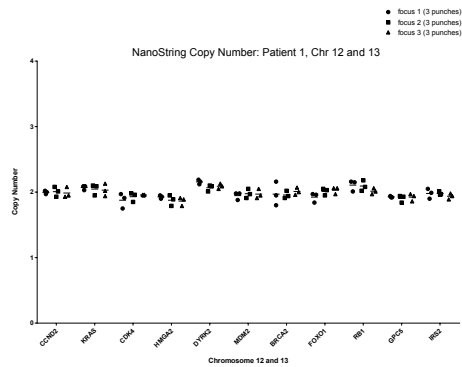
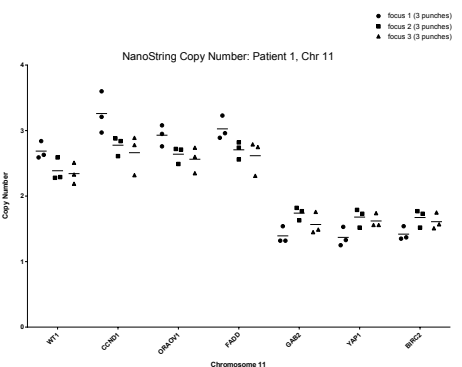
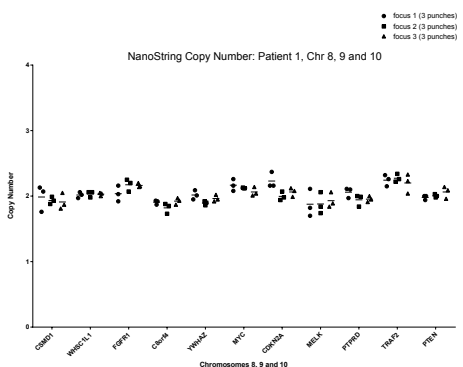
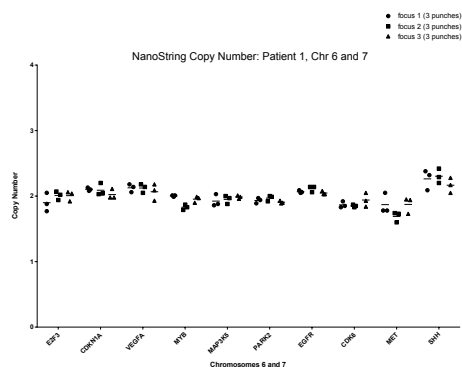
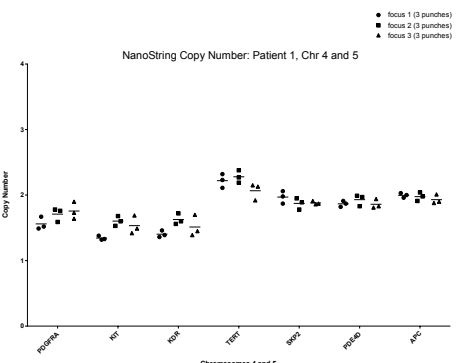
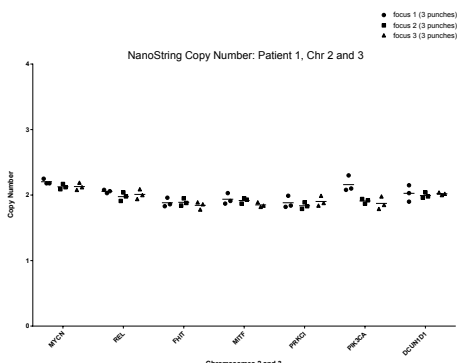
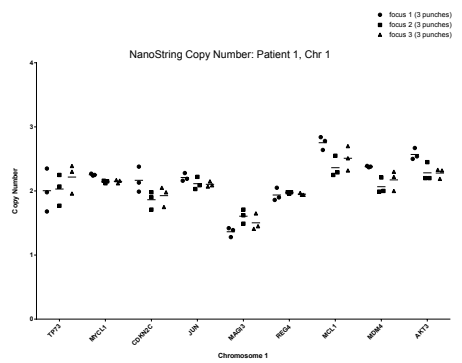
NanoString Copy Number: Patient 2, Chr 18 to 22



● focus 1 (3 punches)
■ focus 2 (3 punches)

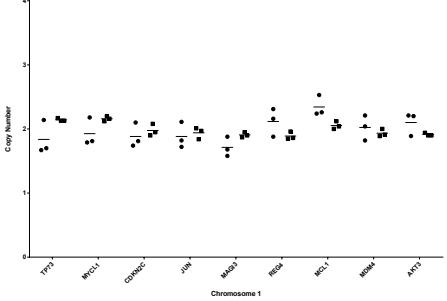
NanoString Copy Number: Patient 2, Chr X





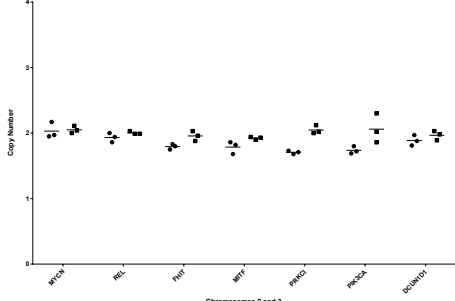
● focus 1 (3 punches)
■ focus 2 (3 punches)

NanoString Copy Number: Patient 3, Chr 1



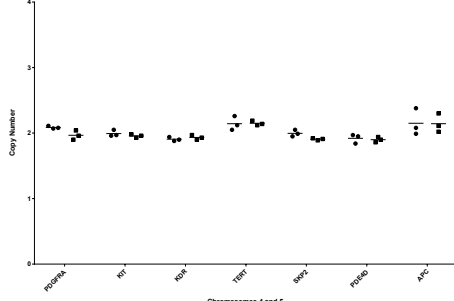
● focus 1 (3 punches)
■ focus 2 (3 punches)

NanoString Copy Number: Patient 3, Chr 2 and 3



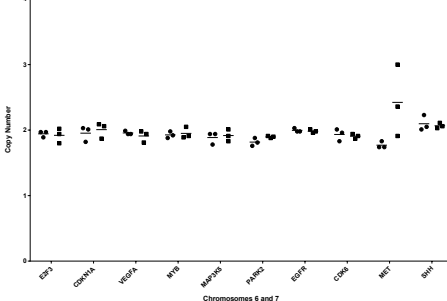
● focus 1 (3 punches)
■ focus 2 (3 punches)

NanoString Copy Number: Patient 3, Chr 4 and 5



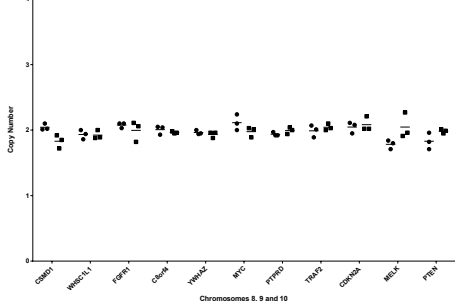
● focus 1 (3 punches)
■ focus 2 (3 punches)

NanoString Copy Number: Patient 3, Chr 6 and 7



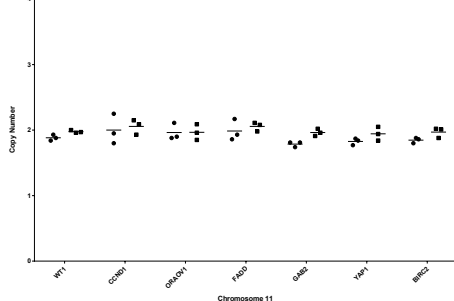
● focus 1 (3 punches)
■ focus 2 (3 punches)

NanoString Copy Number: Patient 3, Chr 8, 9 and 10



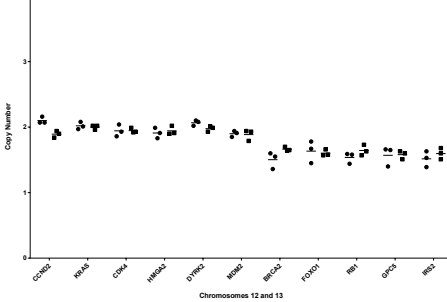
● focus 1 (3 punches)
■ focus 2 (3 punches)

NanoString Copy Number: Patient 3, Chr 11



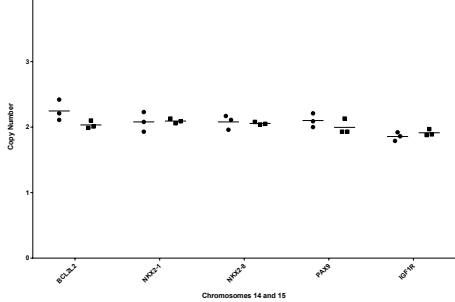
● focus 1 (3 punches)
■ focus 2 (3 punches)

NanoString Copy Number: Patient 3, Chr 12 and 13



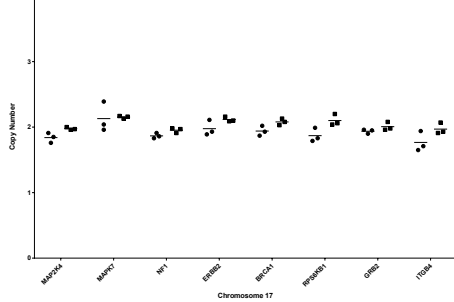
● focus 1 (3 punches)
■ focus 2 (3 punches)

NanoString Copy Number: Patient 3, Chr 14 and 15



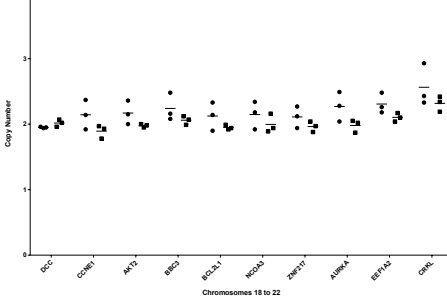
● focus 1 (3 punches)
■ focus 2 (3 punches)

NanoString Copy Number: Patient 3, Chr 17



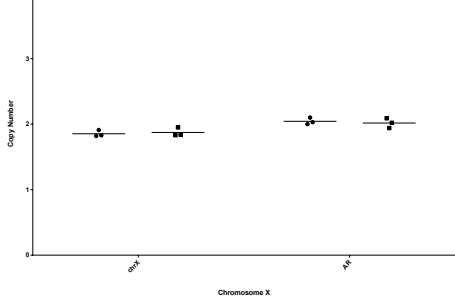
● focus 1 (3 punches)
■ focus 2 (3 punches)

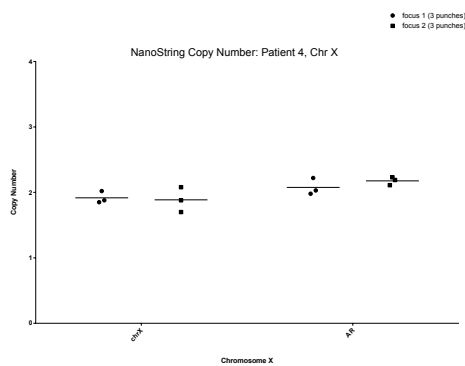
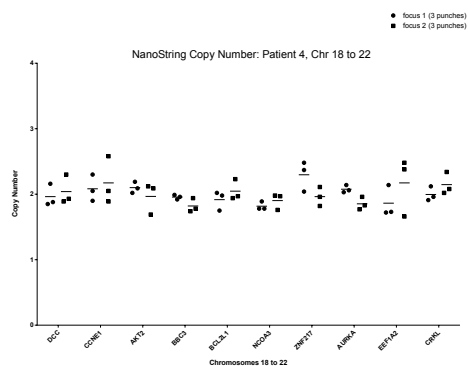
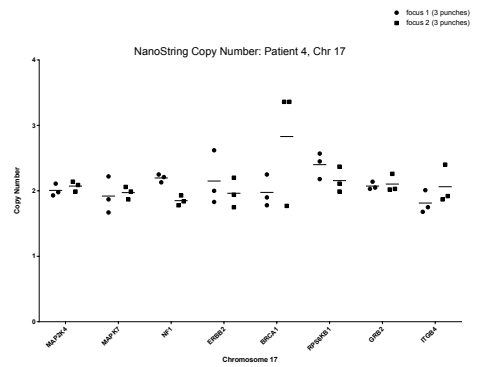
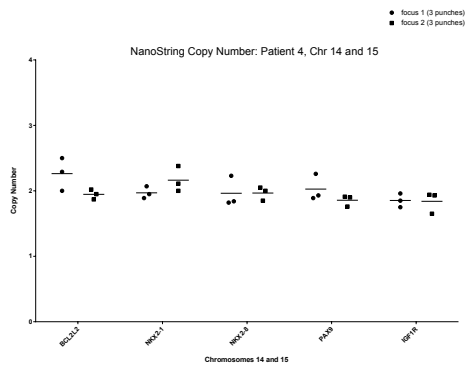
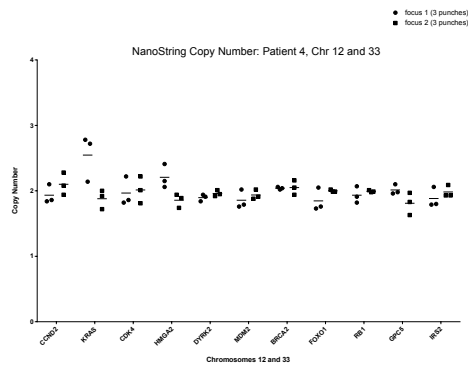
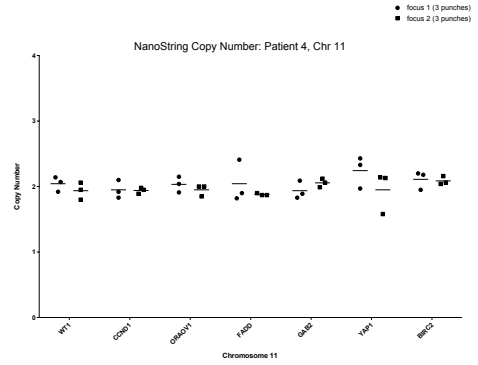
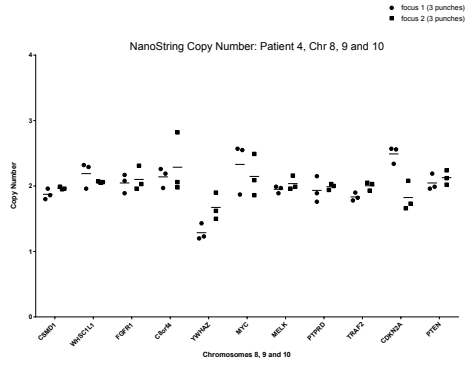
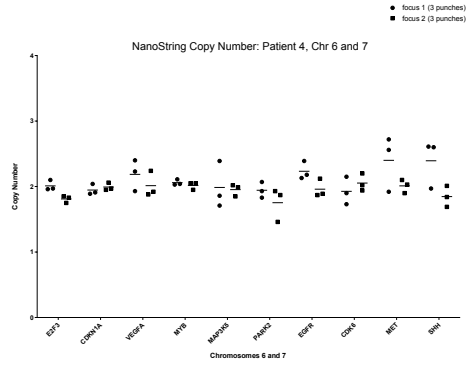
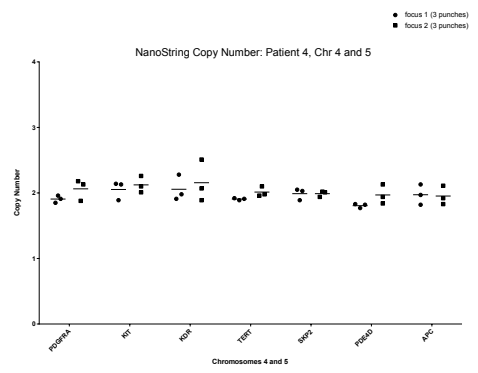
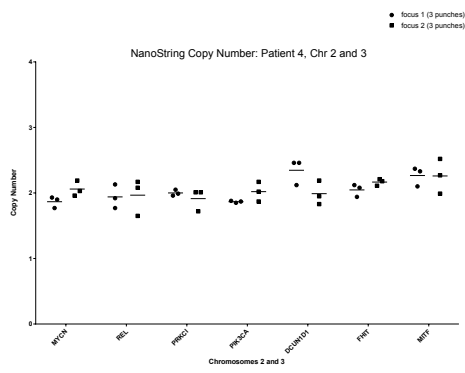
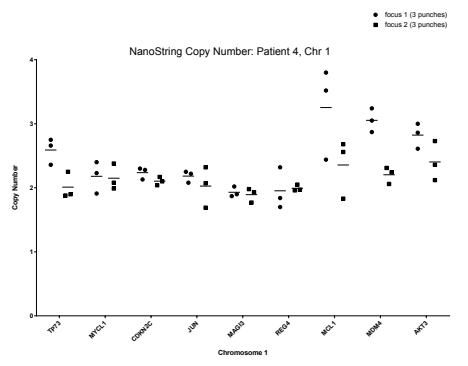
NanoString Copy Number: Patient 3, Chr 18 to 22

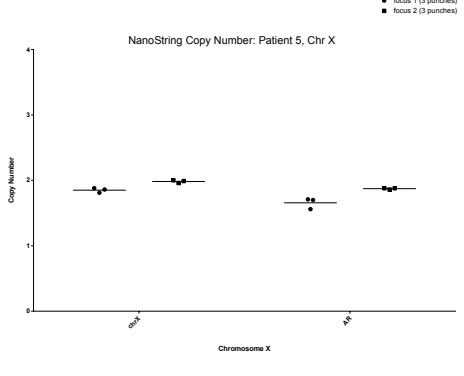
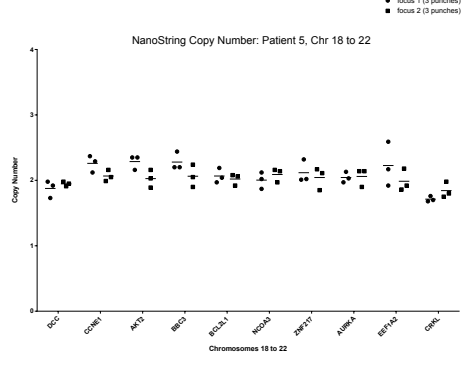
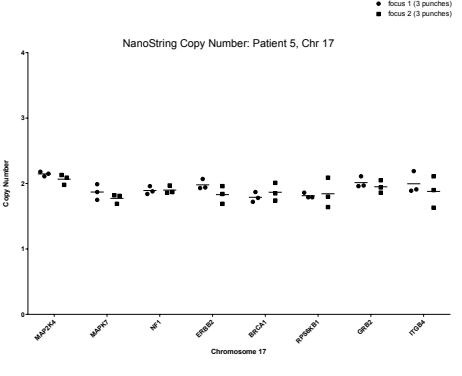
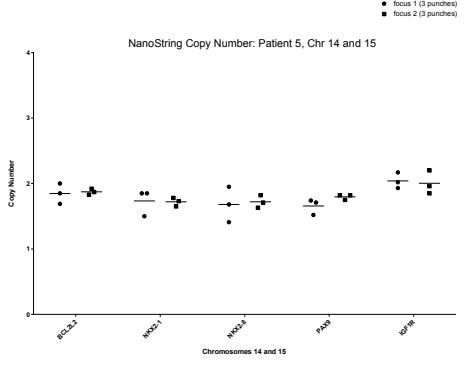
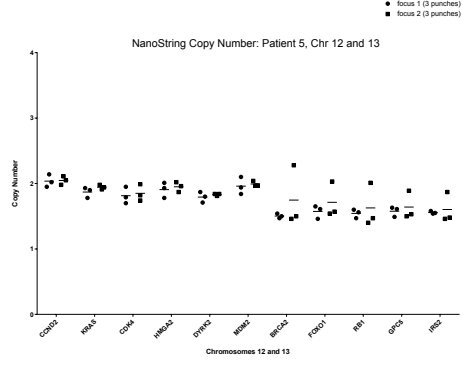
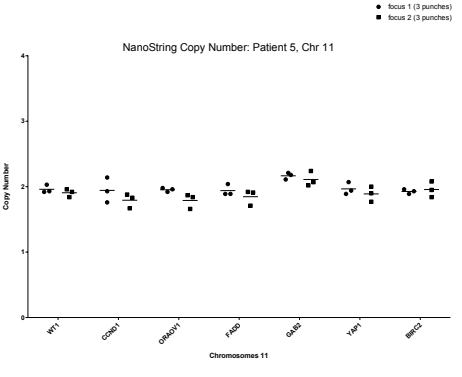
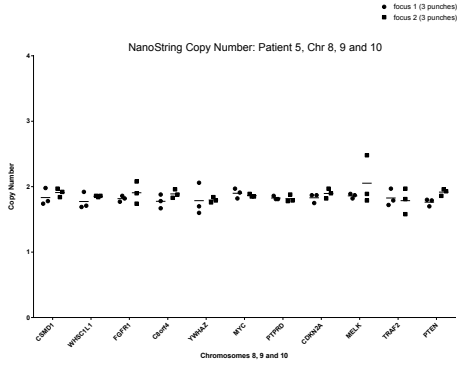
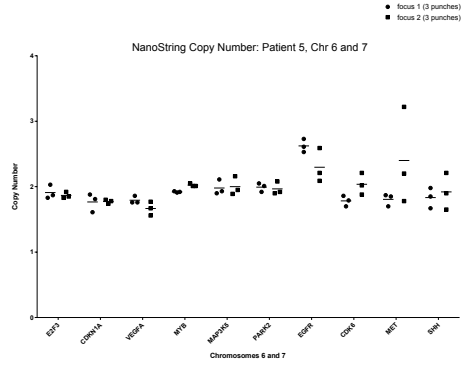
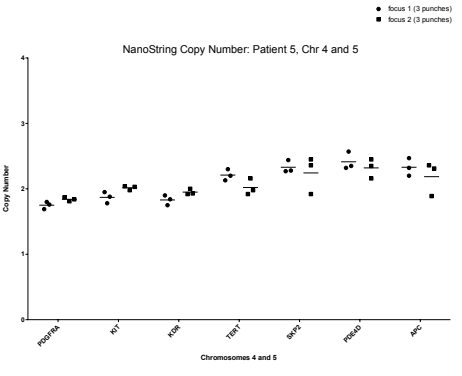
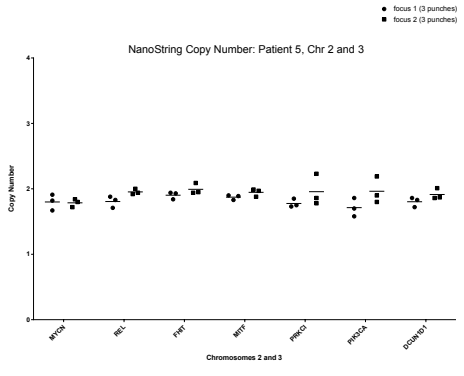
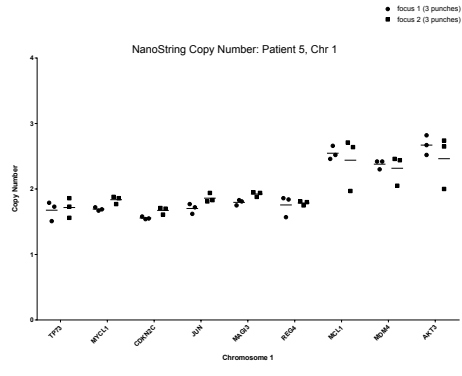


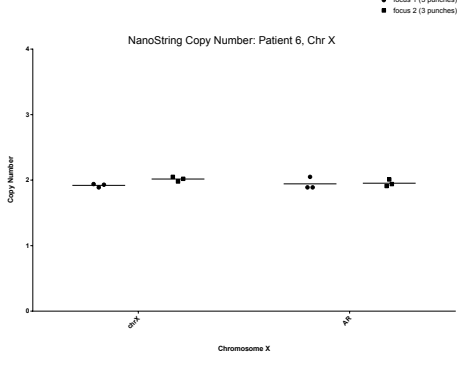
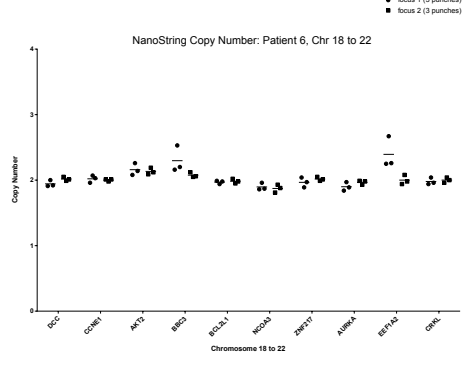
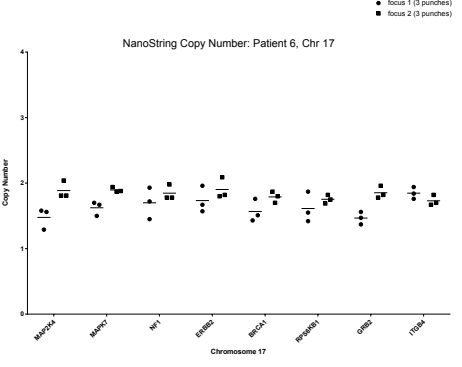
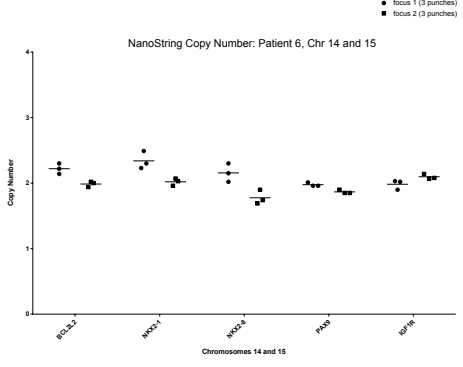
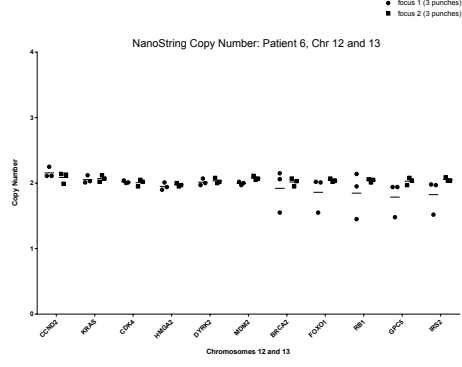
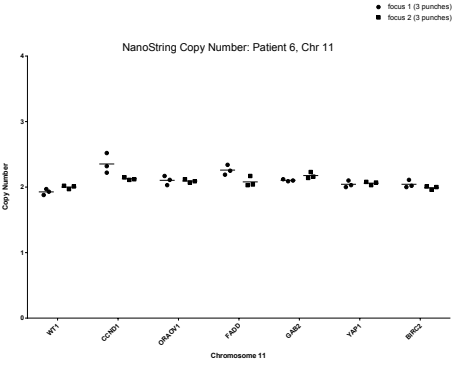
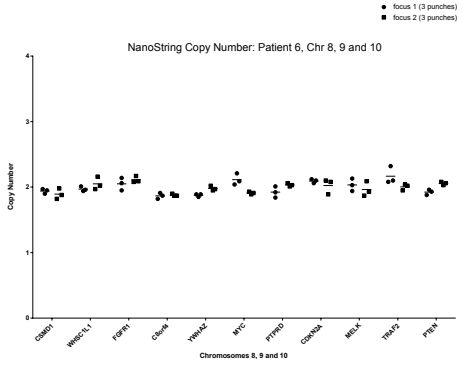
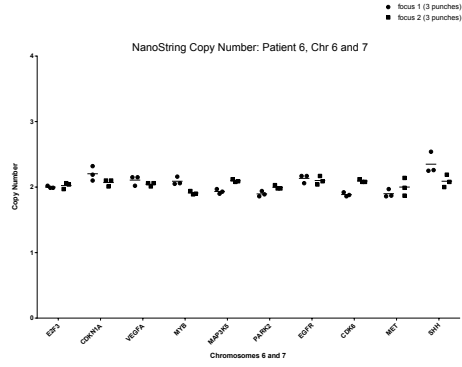
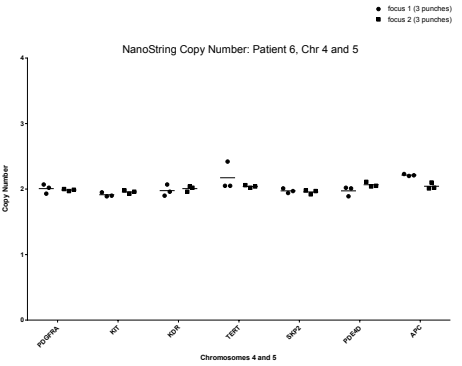
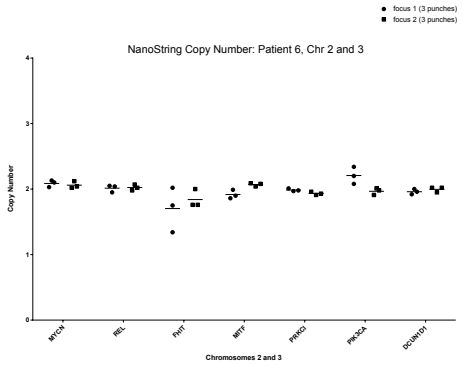
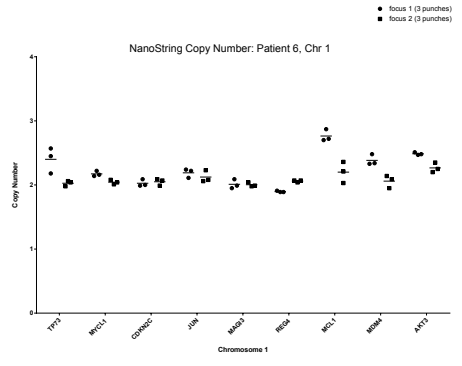
● focus 1 (3 punches)
■ focus 2 (3 punches)

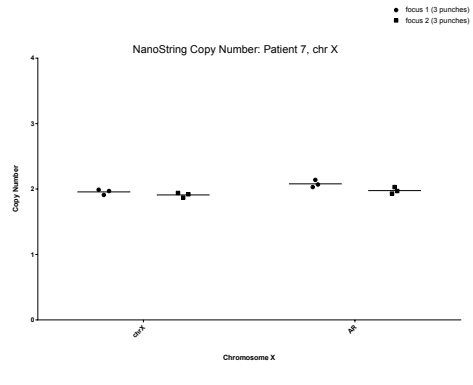
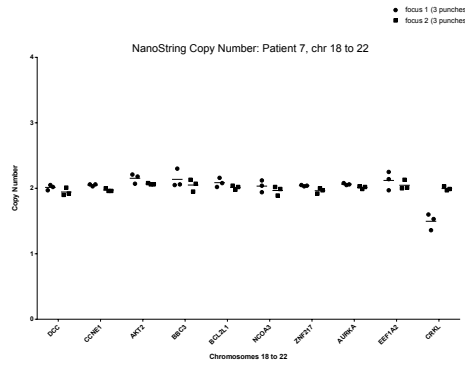
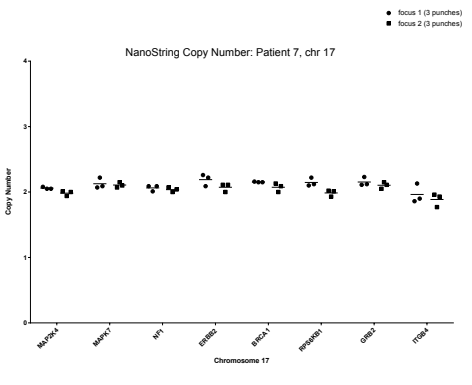
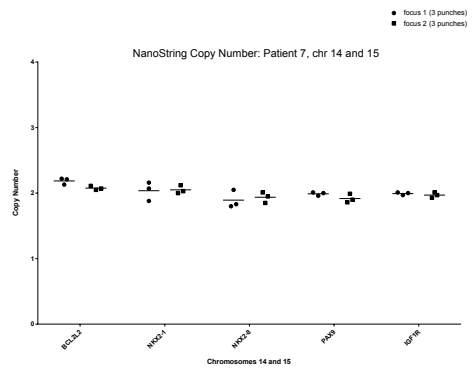
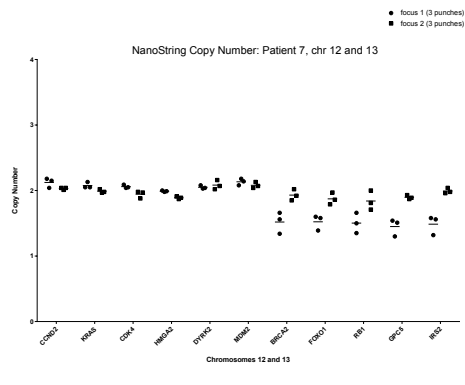
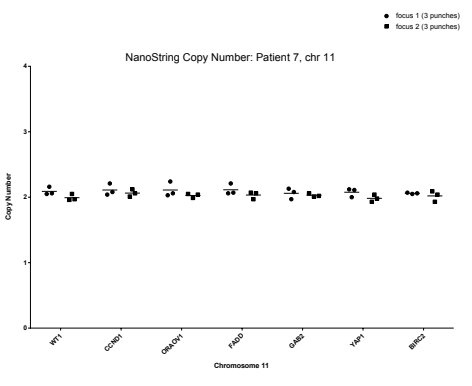
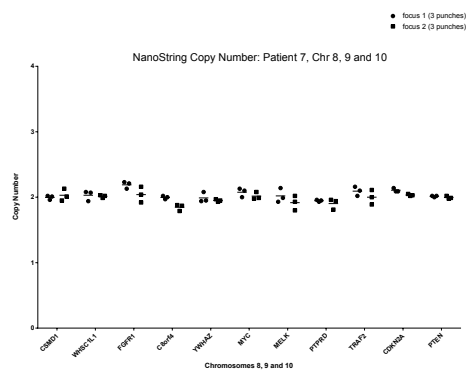
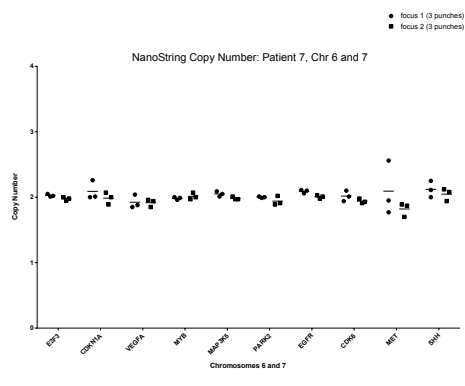
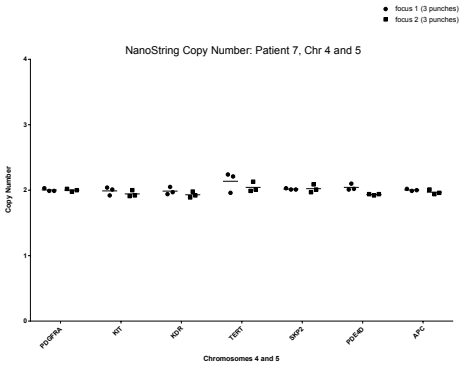
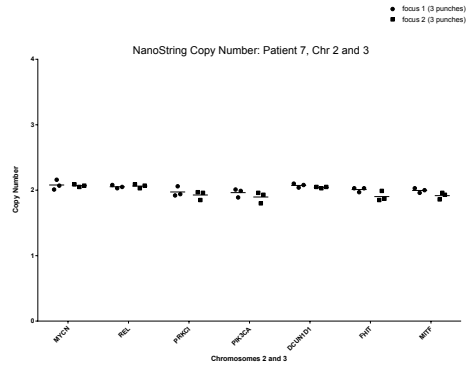
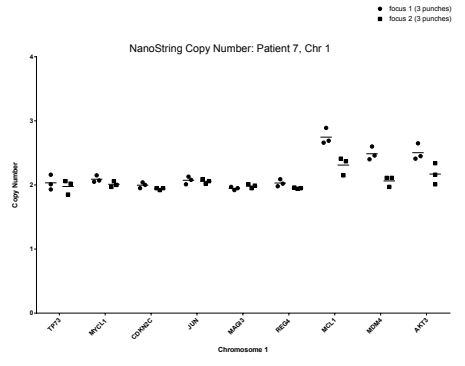
NanoString Copy Number: Patient 3, Chr X



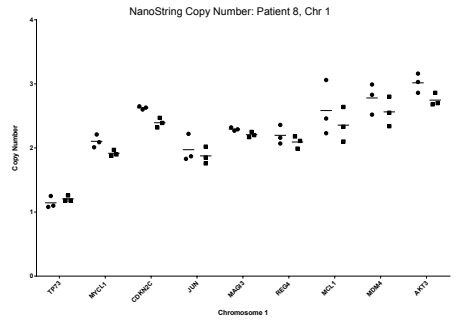




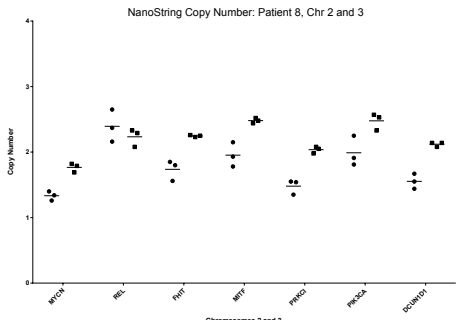




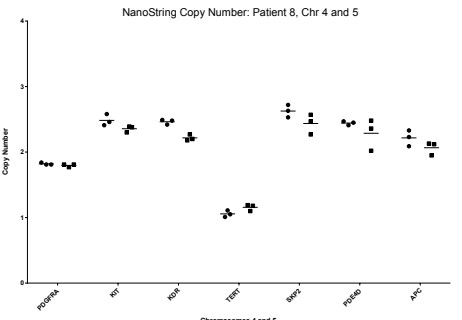
● focus 1 (3 punches)
■ focus 2 (3 punches)



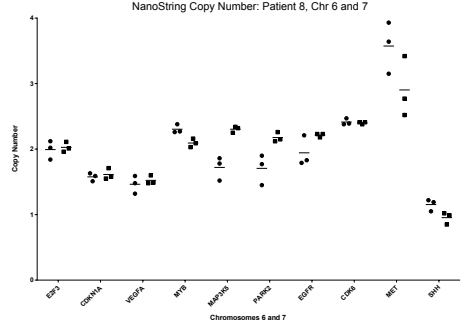
● focus 1 (3 punches)
■ focus 2 (3 punches)



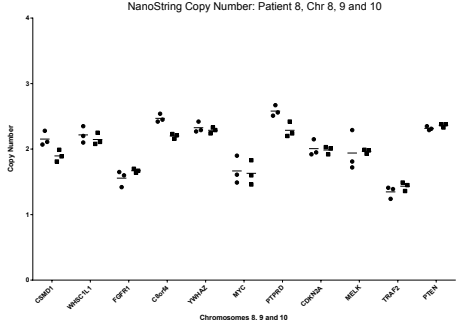
● focus 1 (3 punches)
■ focus 2 (3 punches)



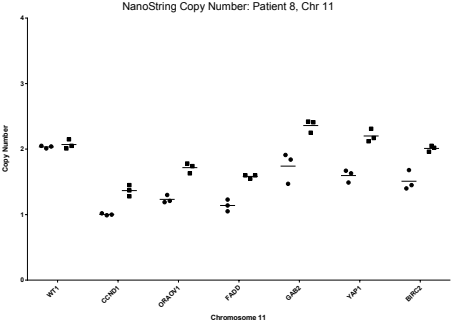
● focus 1 (3 punches)
■ focus 2 (3 punches)



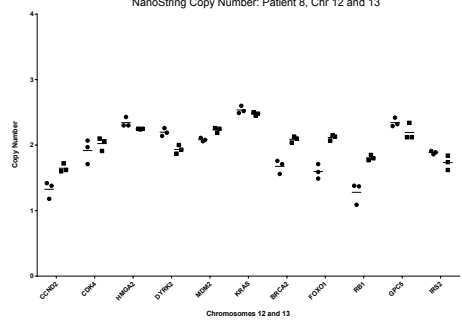
● focus 1 (3 punches)
■ focus 2 (3 punches)



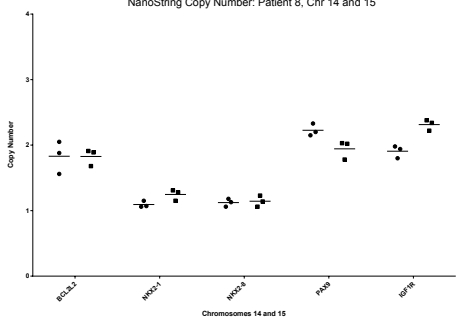
● focus 1 (3 punches)
■ focus 2 (3 punches)



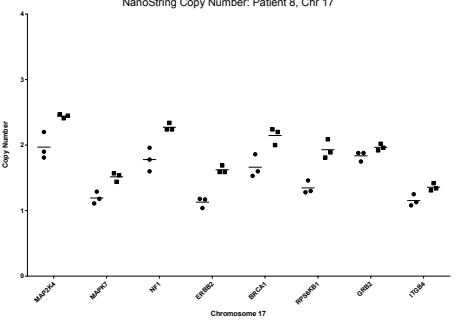
● focus 1 (3 punches)
■ focus 2 (3 punches)



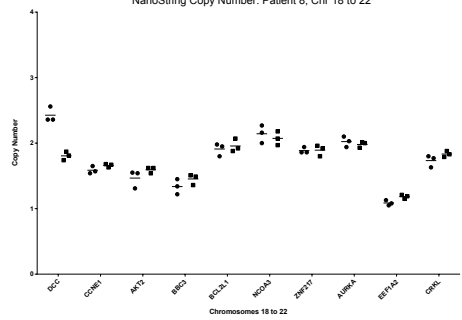
● focus 1 (3 punches)
■ focus 2 (3 punches)



● focus 1 (3 punches)
■ focus 2 (3 punches)



● focus 1 (3 punches)
■ focus 2 (3 punches)



● focus 1 (3 punches)
■ focus 2 (3 punches)

