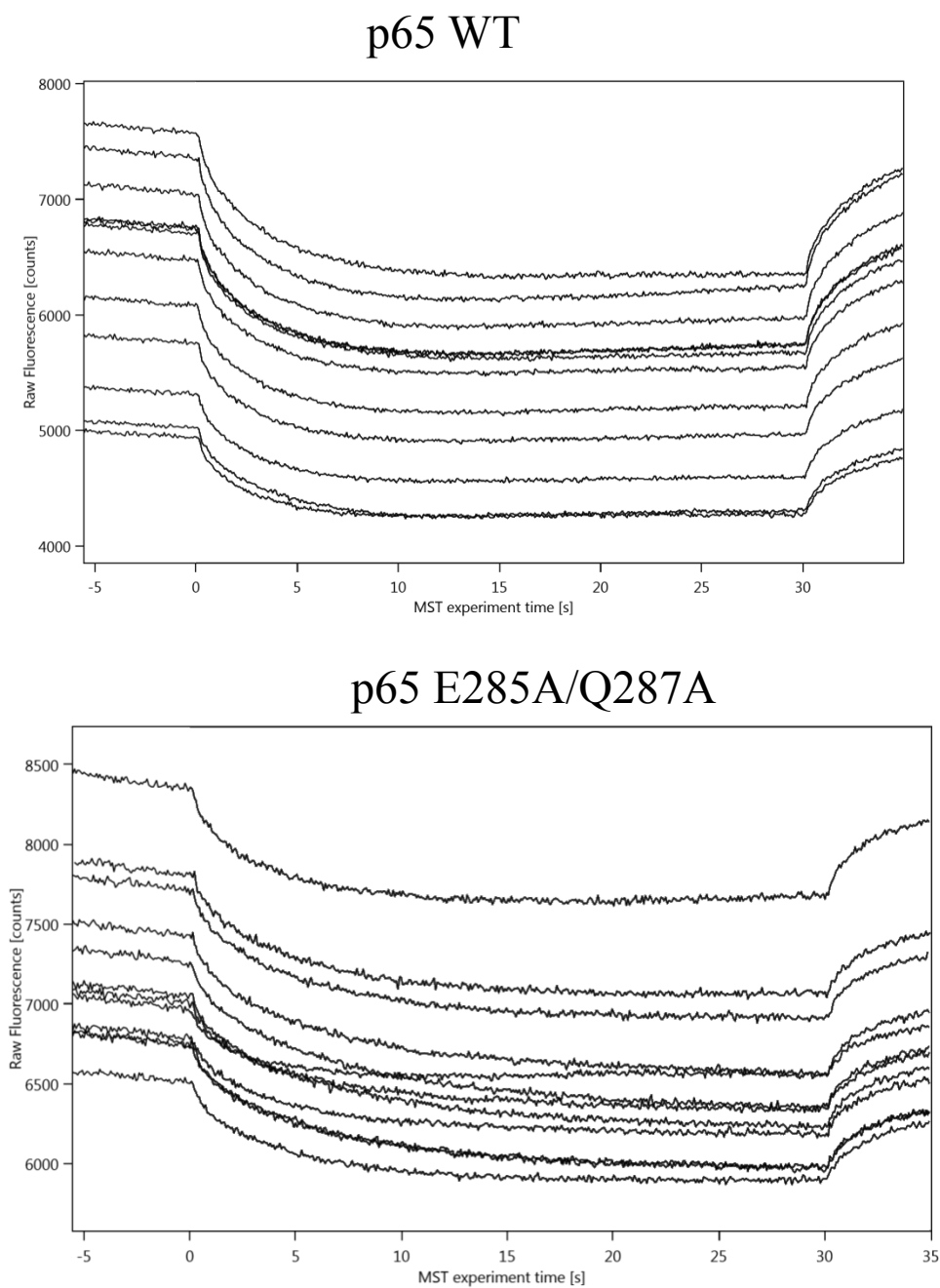
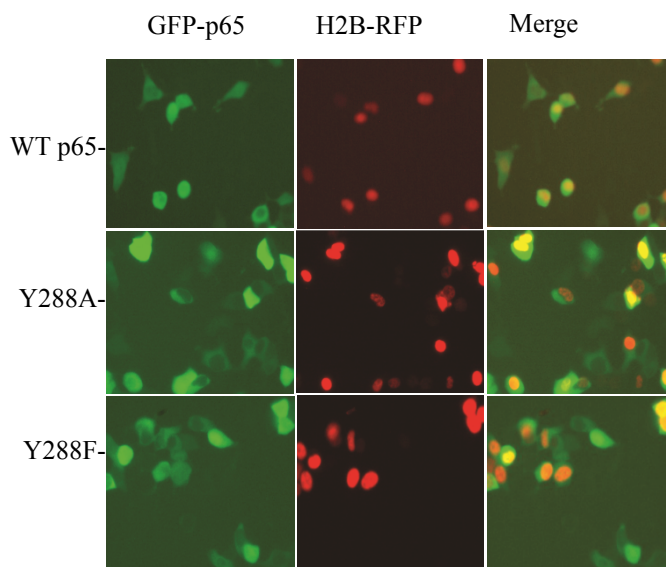


**Figure S1: A.** Computational models of p65-p50 heterodimer bound to DNA (PDB ID: 1VKX) in a complex with WFA using Schrodinger program. p65 is represented in blue, p50 is in orange and the Y288 is colored in magenta. Residues contacting with WFA are labeled.



**Figure S2:** Microscale thermophoresis (MST) traces of p65 WT or E285A/Q287A ( $3.4\mu\text{M}$ ) following incubation with increasing concentrations of WFA. Traces were achieved using Monolith NT.LabelFree instrument (NanoTemper).



**Figure S3:** The Y288A and Y288F mutations were introduced into GFP-p65 fusion protein and then transfected into cells together with the nuclear marker H2B-RFP. Pictures were taken 48 hours following the transfection.

**Figure S4**

