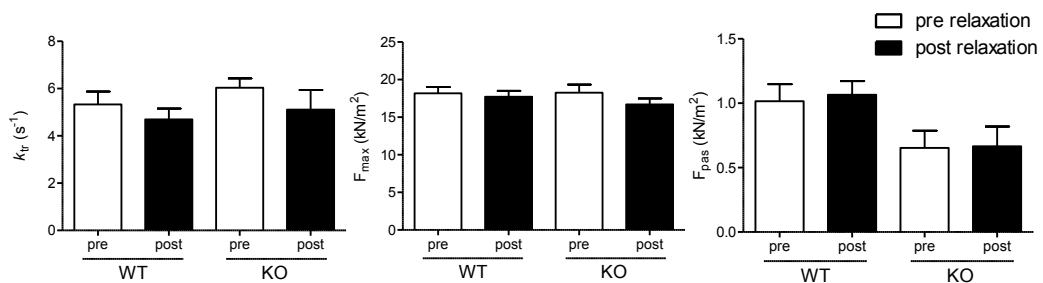


Suppl Data 4- Effect of S-glutathiolation of C1-M-C2 C249S on protein kinase-mediated phosphorylation.

Recombinant C1-M-C2 C249S was exposed to vehicle (control; white bars) or GSSG (1 mmol/L; 30 min; black bars) and subsequent phosphorylation by PKA (A; 30 min) or CaMK (B; 30 min) was assessed using phosphosite-specific antibodies for Ser275, Ser284 or Ser304. Protein loading was assessed with a His antibody. The bar charts summarize the data from 5 independent IVK experiments.



Suppl Data 5- Effect of vehicle treatment on sarcomere function in skinned ventricular myocytes from WT and KO mice.

Rate of force redevelopment (k_{tr}) and Ca^{2+} -activated force (F_{max}) was determined in activating solution (pCa 4.5) and passive force (F_{pas}) in relaxing solution (pCa 9) in Triton-permeabilised ventricular myocytes from WT ($n=3$; 10 myocytes) and KO ($n=3$; 12 myocytes) mice. Bar charts show data obtained before (pre; white bars) and after (post; black bars) subjecting ventricular myocytes to a release-restretch protocol.