

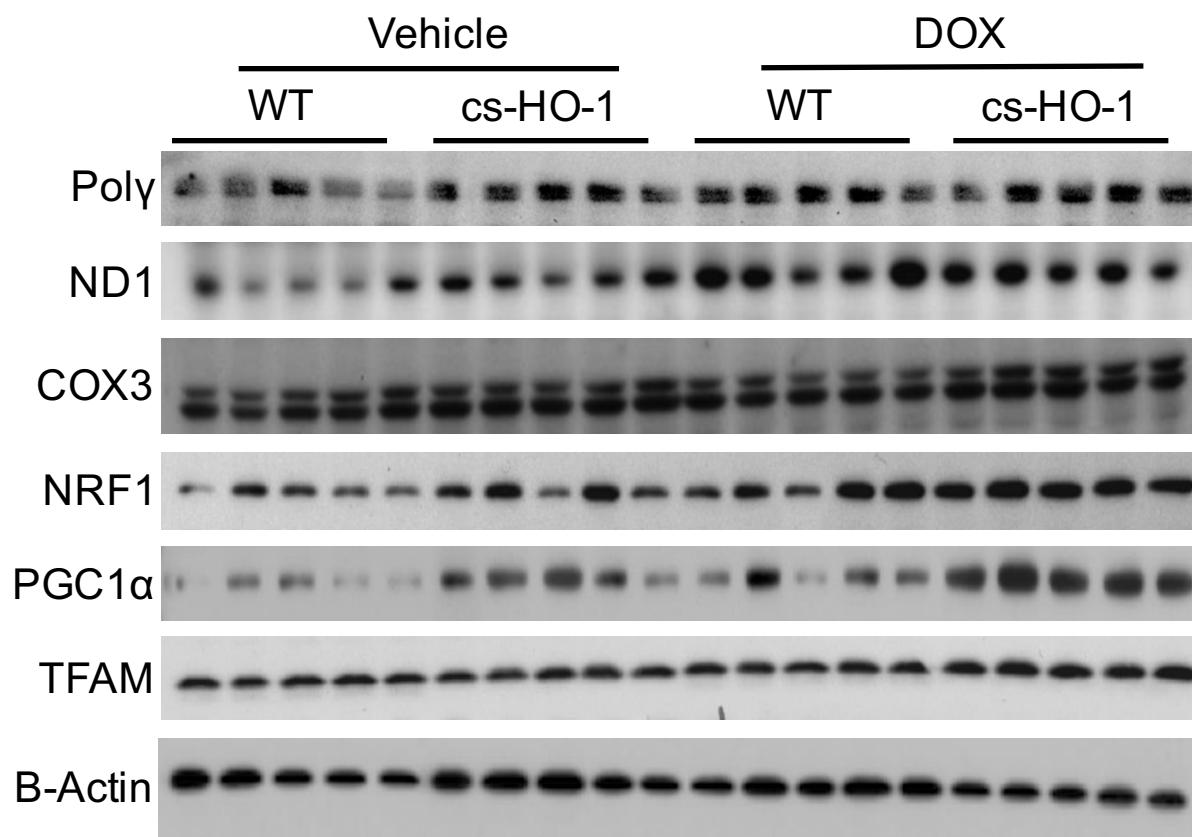
SUPPLEMENTAL FIGURE LEGENDS:

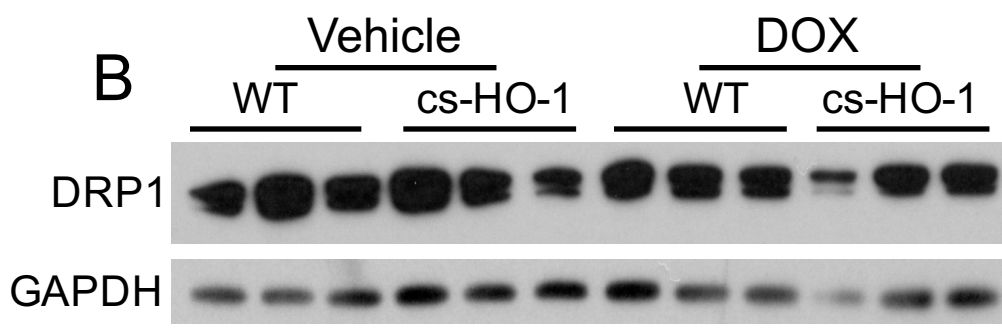
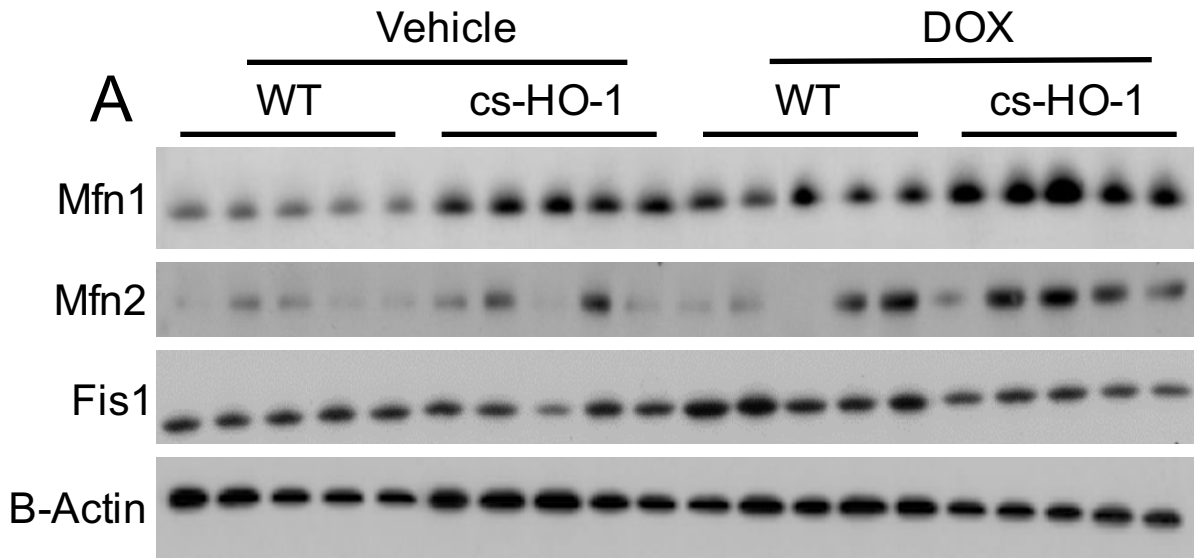
Supplemental Figure 1: Western blots used to generate the densitometry values depicted in Figure 3.

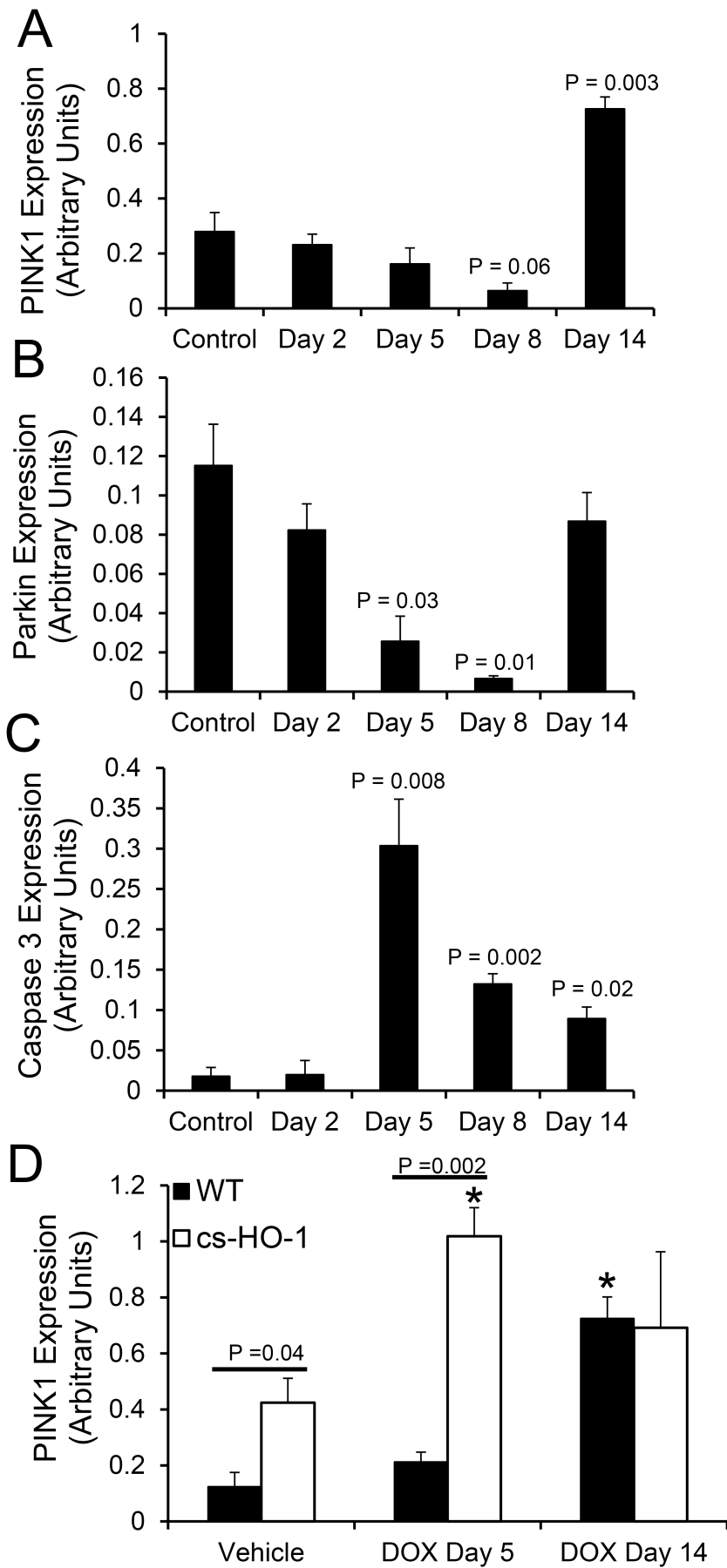
Supplemental Figure 2: Western blots used to generate the densitometry values depicted in figure 6.

Supplemental Figure 3: Densitometry measurements for the blots depicted in Figure 7. Bars depict the mean \pm SEM of measurements normalized to GAPDH. Data are expressed in arbitrary units. P values < 0.05 using ANOVA and the Newman-Keuls post-test were considered significant. n = 3-4/group.

Supplemental Figure 4: Transmission electron micrographs of left ventricle (LV) from wild-type and cardiac-specific overexpression of HO-1 (cs-HO-1) mice treat with vehicle or 14 or 60 days after treatment with doxorubicin. Micrographs were captured at 1650x total magnification. Scale bar represents 2 μm . n = 3 – 5 mice per group, with at least 5 images evaluated per mouse. Images were assessed by a reviewer blinded to the different groups.



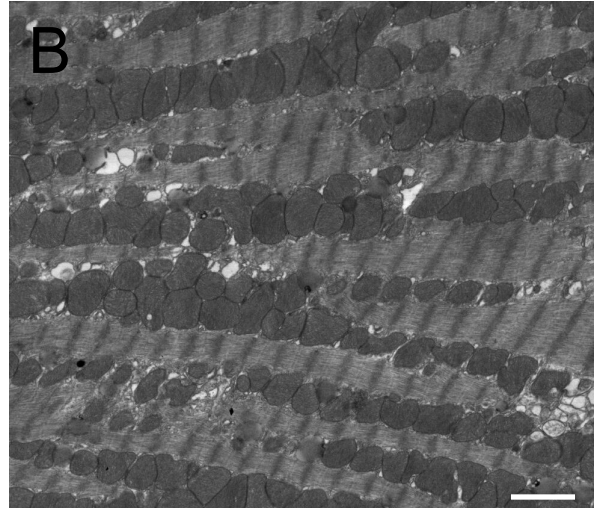
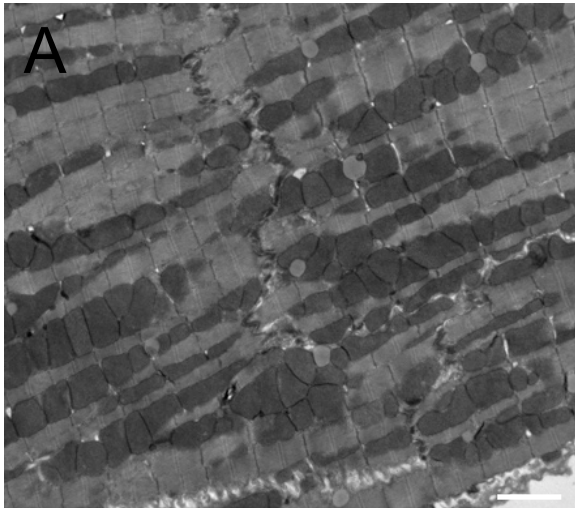




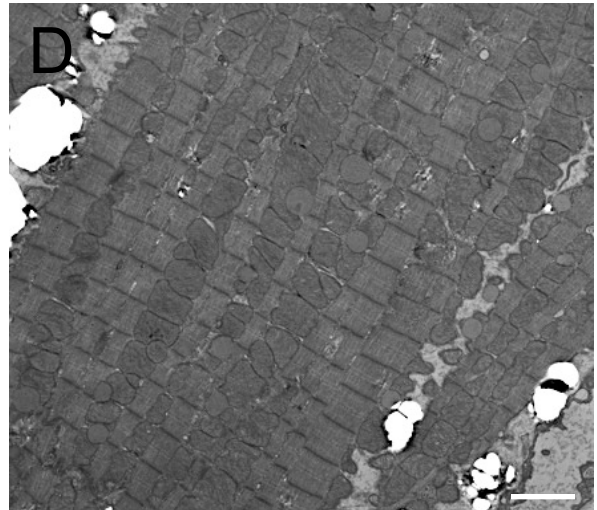
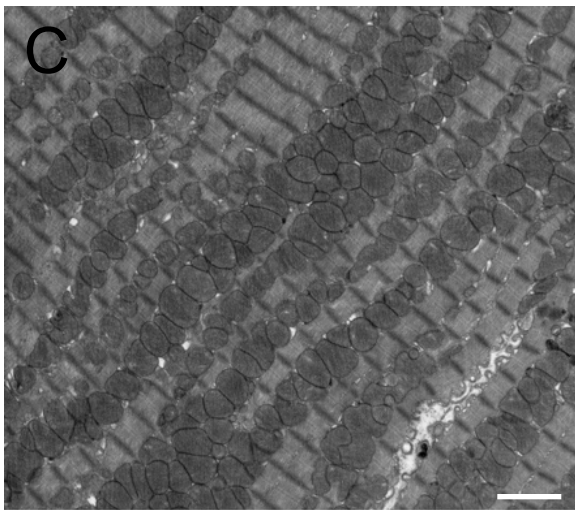
Wild-Type

cs-HO-1

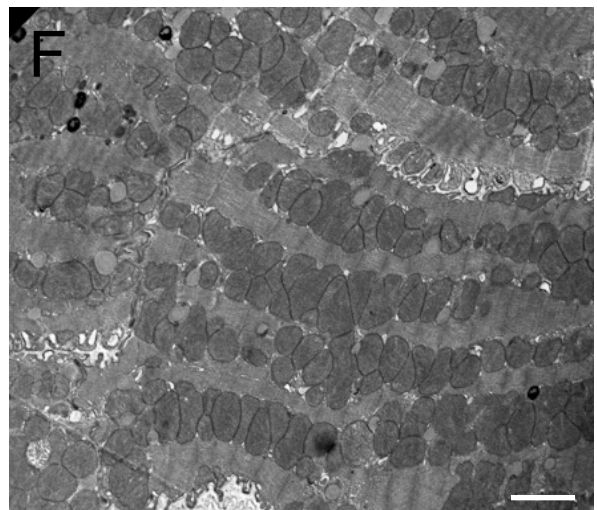
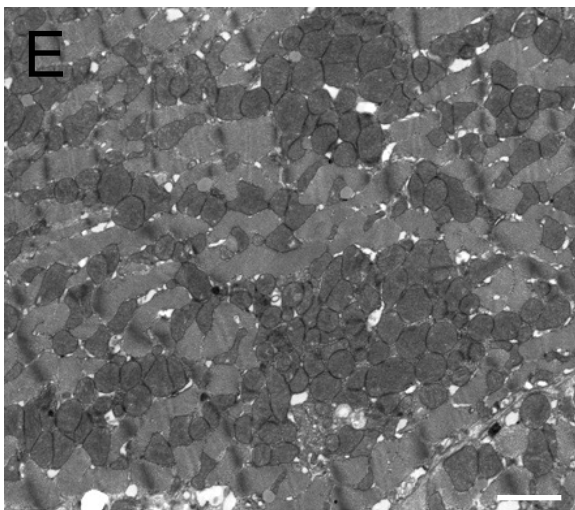
Vehicle



Day 14



Day 60



Full uncropped gel for Figure 7

Cropped Figure 7

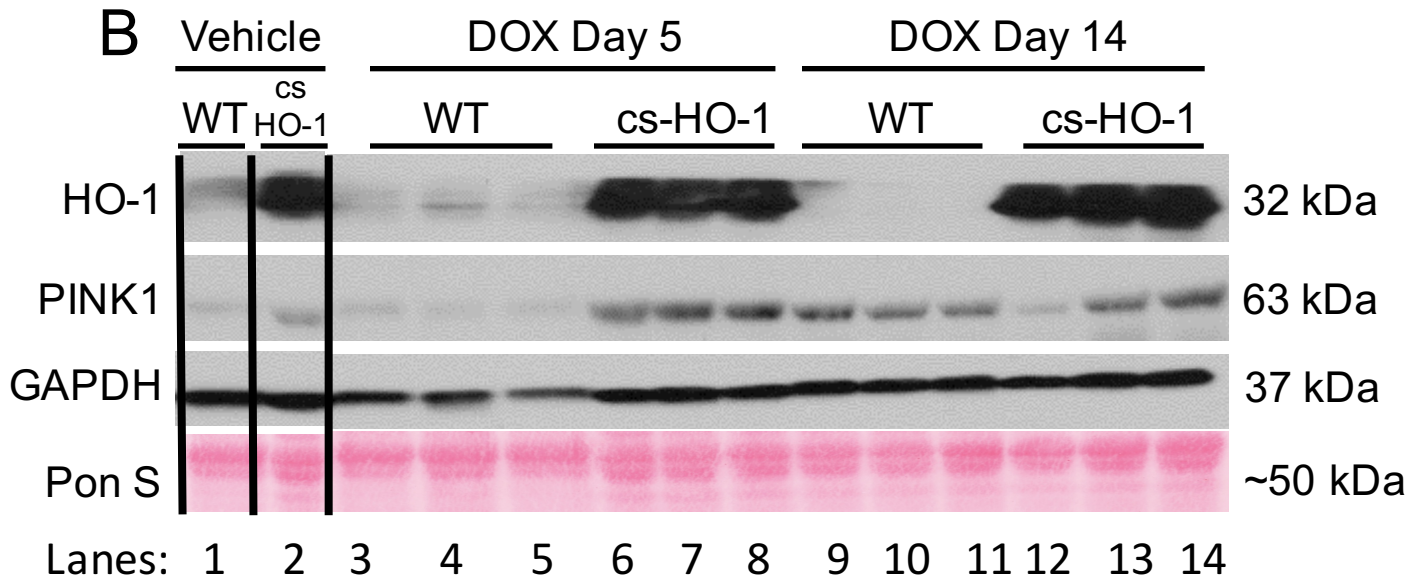
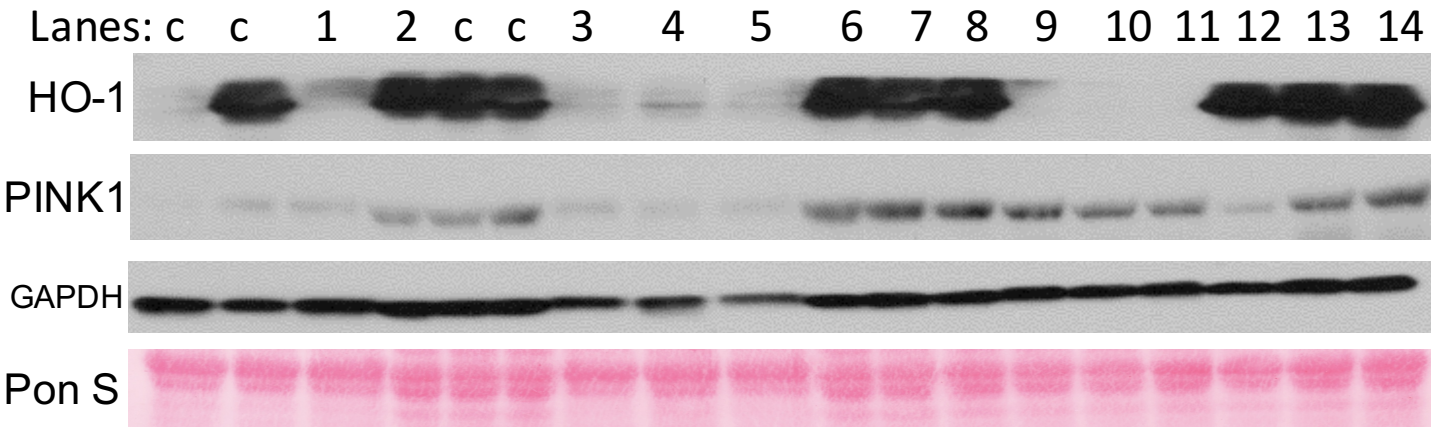


Figure 7 Original Blot – no lanes cropped



c = lanes cropped from the image of the blot in figure 7.

Numbered lanes were incorporated into figure 7.

The 4th, and 5th cropped lanes were superfluous, depicting results from cs-HO-1 mice already shown in lane 2. The 2nd cropped lane was the incorrect genotype. The 1st cropped lane was superfluous, showing the same control as lane 1.