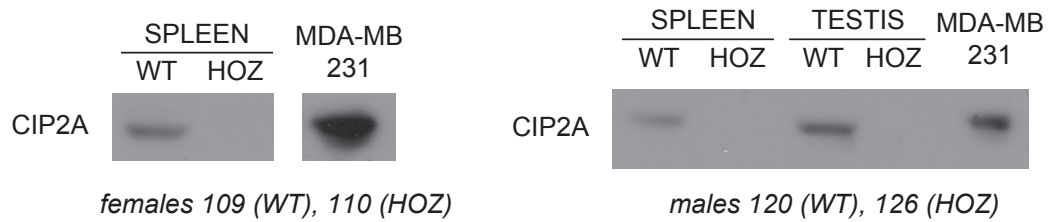


A



B

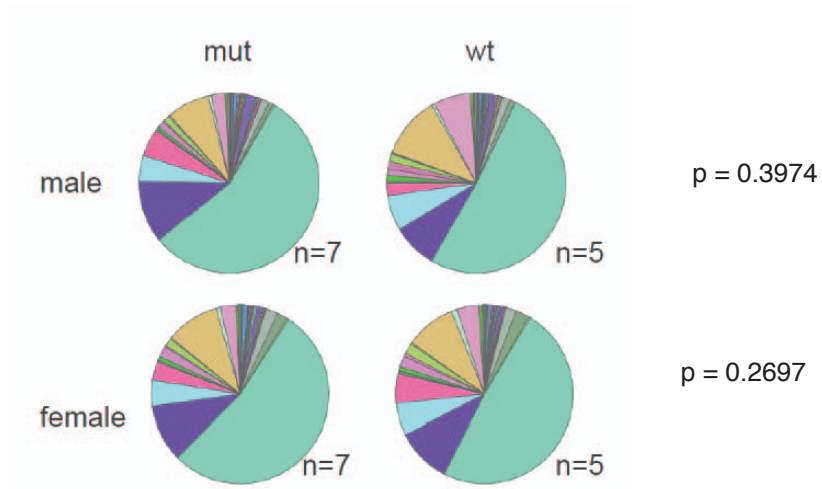


Figure S1: CIP2A^{HOZ} mice present similar B cell subpopulations than WT mice

(A) Protein expression of spleen and testis from WT and CIP2A^{HOZ} adult mice, from littermates. 100 µg of total protein lysate were loaded per well.

(B) Flow cytometric analysis (Boolean gating) of splenocyte B cell subsets using the following markers: CD5, CD11b, B220, MHC-classII (I/E), IgD, CD95.