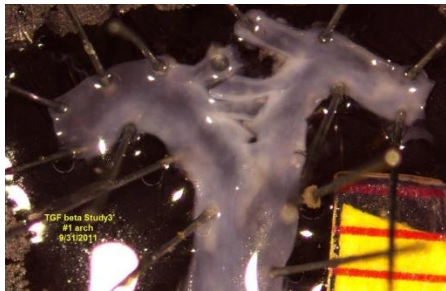
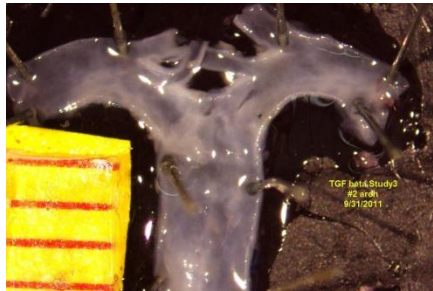


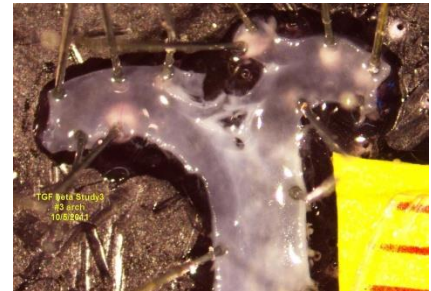
Study #1: Control rabbit IgG
(10 mg/kg, 2 times/week)
AngII (1,000 ng/kg/min)



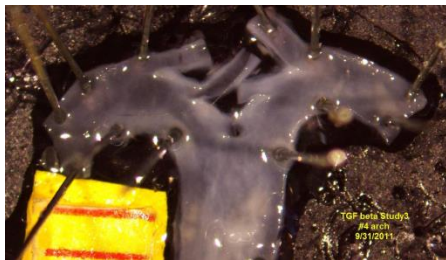
13.55 mm²



12.58 mm²

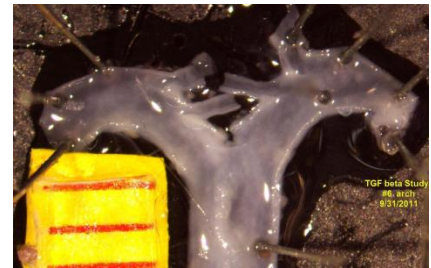


12.24 mm²

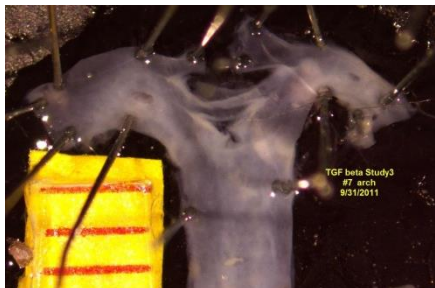


13.41 mm²

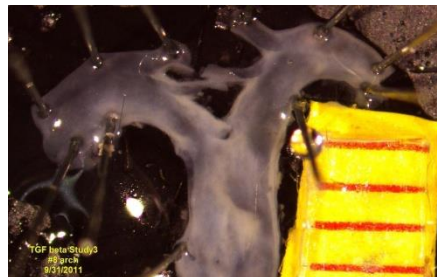
5: Died



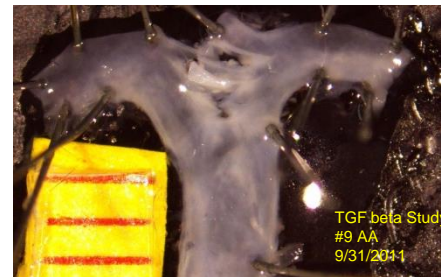
12.36mm²



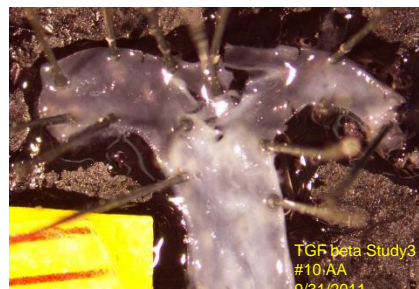
12.69 mm²



12.87 mm²

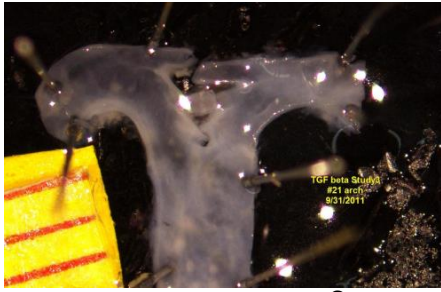


13.26 mm²

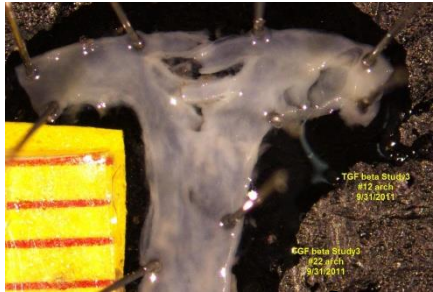


12.73 mm²

Study #1: TGF- β rabbit IgG
(10 mg/kg, 2 times/week)
AngII (1,000 ng/kg/min)



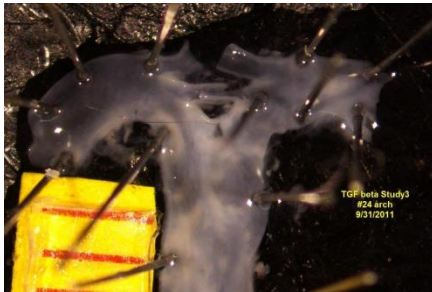
10.54 mm²



12.64 mm²



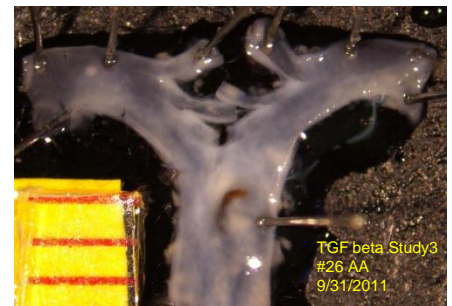
11.49 mm²



12.21 mm²



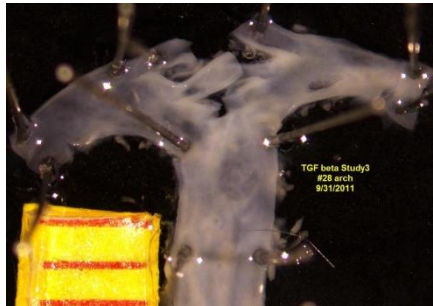
12.65 mm²



11.3 mm²



11.38 mm²



12.08 mm²

29: Died



11.67 mm²