

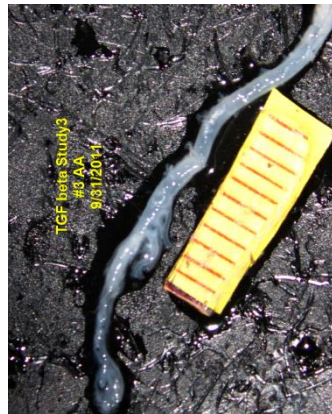
Study #1: Control rabbit IgG  
(10 mg/kg, 2 times/week)  
AngII (1,000 ng/kg/min)



1.17 mm



1.29 mm

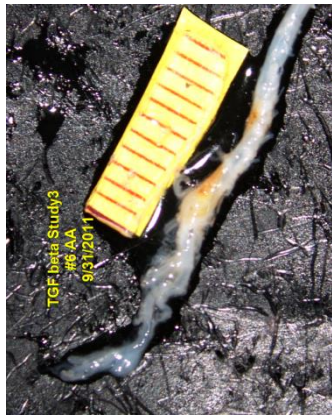


1.11 mm



1.18 mm

# 5: Died



1.85 mm



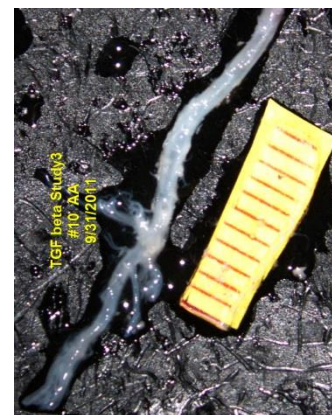
1.07 mm



1.12 mm



1.11 mm



1.18 mm

Study #1: TGF- $\beta$  rabbit IgG  
(10 mg/kg, 2 times/week)  
AngII (1,000 ng/kg/min)



1.03 mm



1.22 mm



1.23 mm



1.16 mm



1.14 mm



2.48 mm



1.24 mm



1.2 mm



1.38 mm



2.12 mm