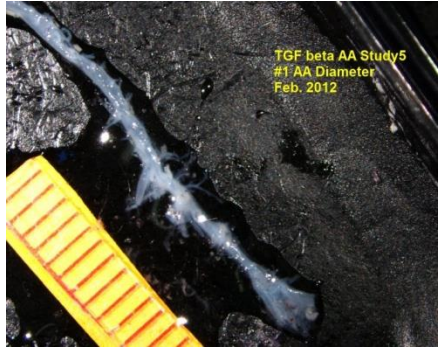


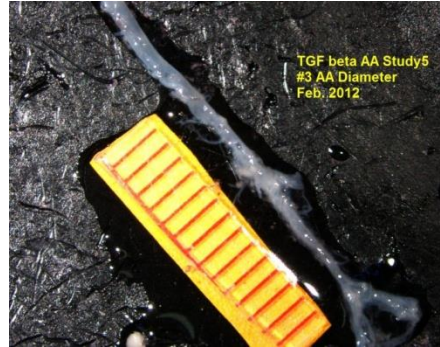
Study #2: Control, isotype-matched mouse IgG (5 mg/kg, 3 times/week) Saline-infused



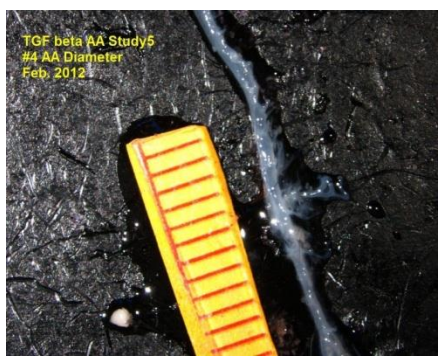
0.78 mm



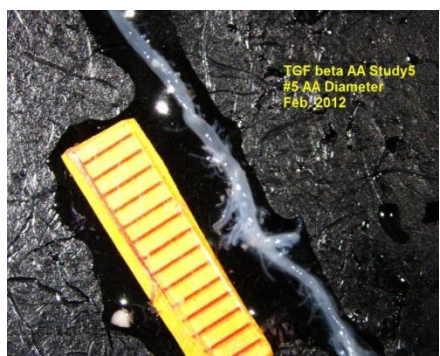
0.82 mm



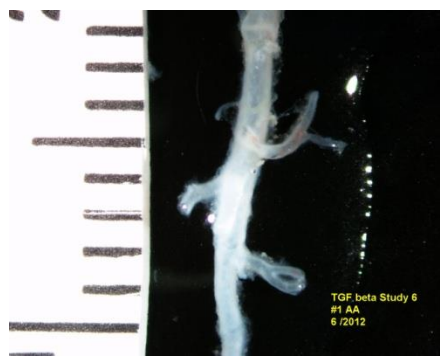
0.72 mm



0.73 mm



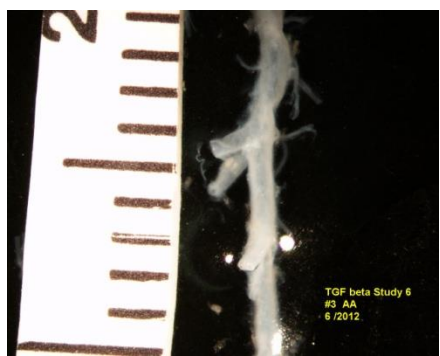
0.75 mm



0.81 mm



0.78 mm



0.81 mm

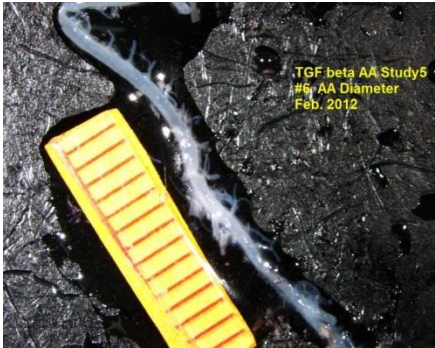


0.74 mm

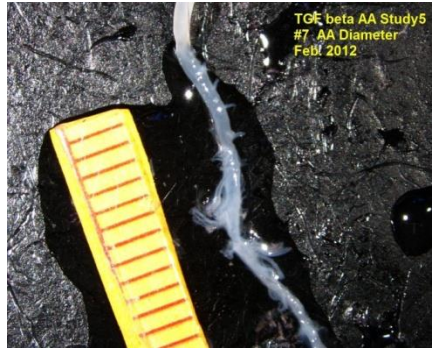


0.84 mm

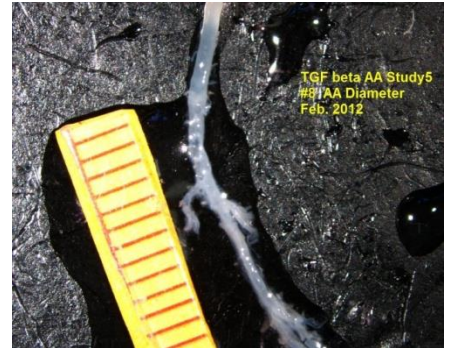
Study #2: TGF- β mouse IgG
(5 mg/kg, 3 times/week)
Saline-infused



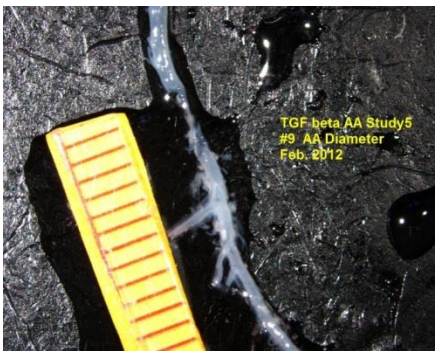
0.80 mm



0.88 mm



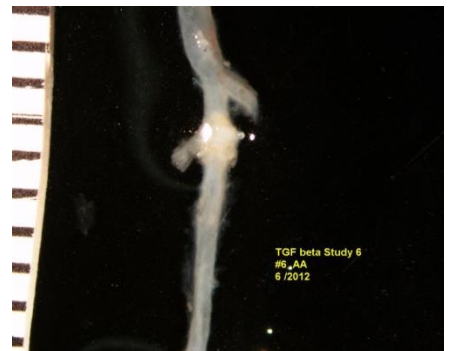
0.84 mm



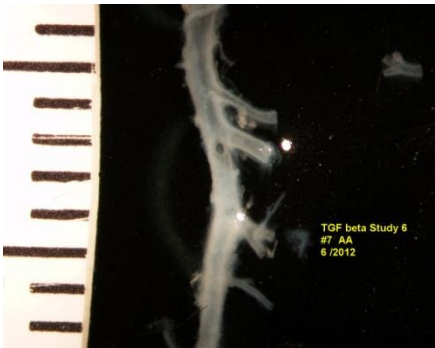
0.82 mm



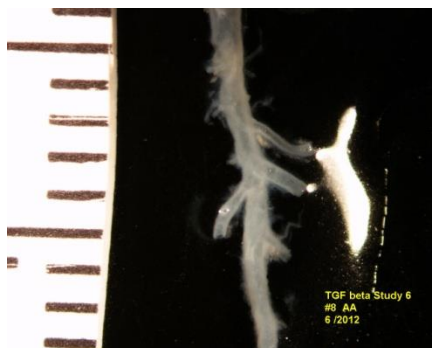
0.80 mm



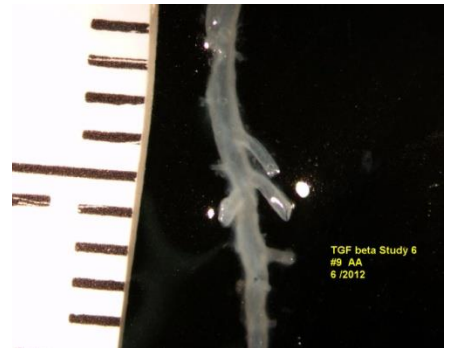
1.12 mm



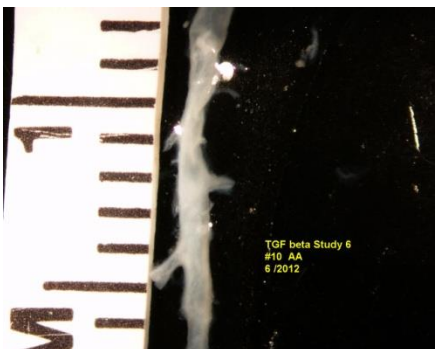
0.83 mm



0.75 mm



1.02 mm



0.73 mm

Study #2: Control, isotype-matched mouse IgG
(5 mg/kg; 3 times/week)
AngII-infused (1,000 ng/kg/min



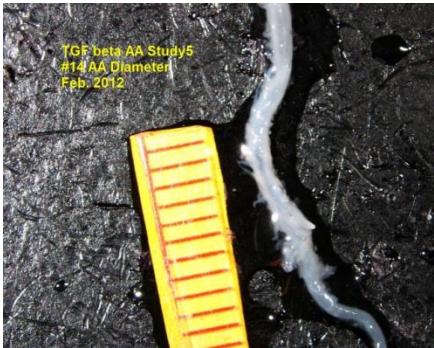
0.98 mm



1.08 mm



1.19 mm



1.06 mm



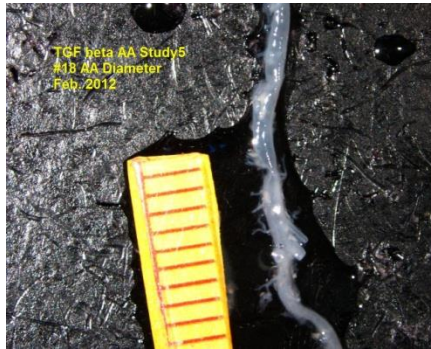
1.13 mm



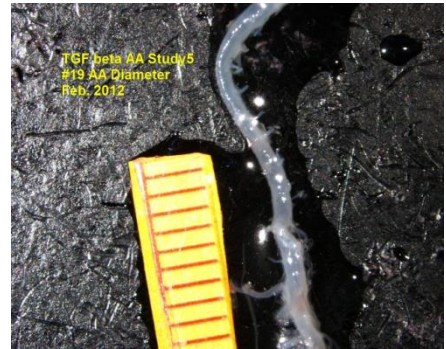
1.10 mm



1.16 mm



1.11 mm

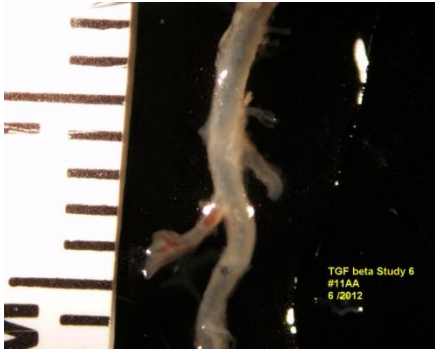


1.15 mm

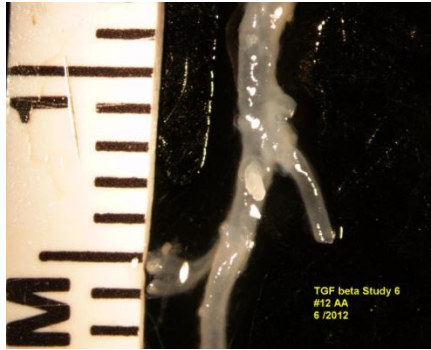


0.99 mm

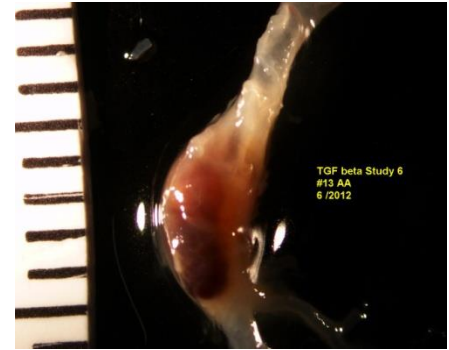
Study #2: Control, isotype-matched IgG
(5 mg/kg, 3 times/week)
AngII (1,000 mg/kg/min)



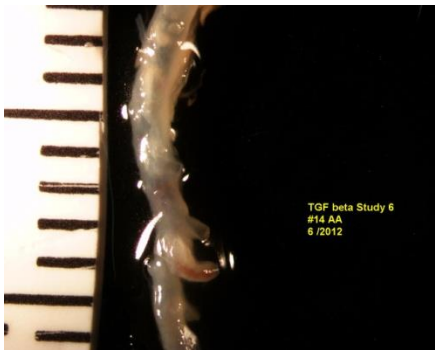
0.94 mm



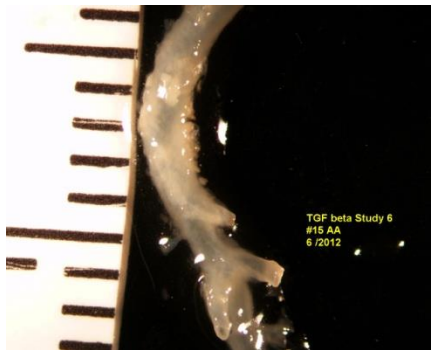
1.06 mm



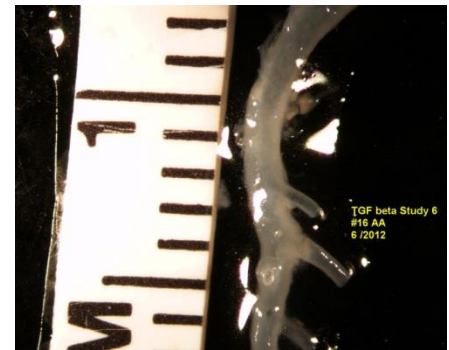
2.63 mm



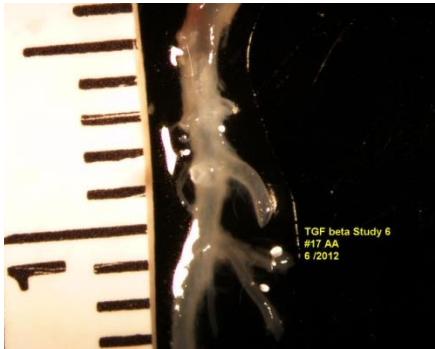
1.05 mm



1.26 mm

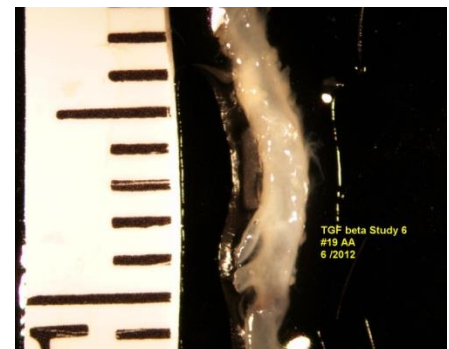


1.04 mm

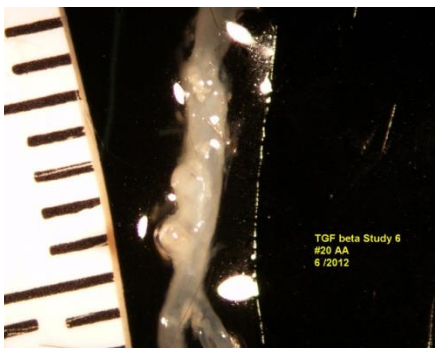


0.98 mm

#18: Died



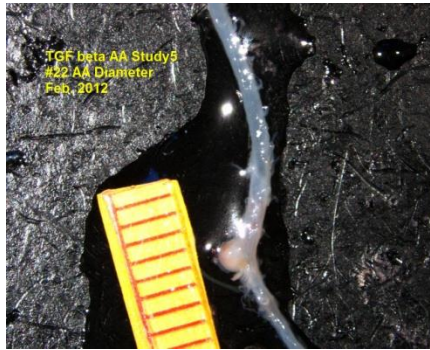
1.23 mm



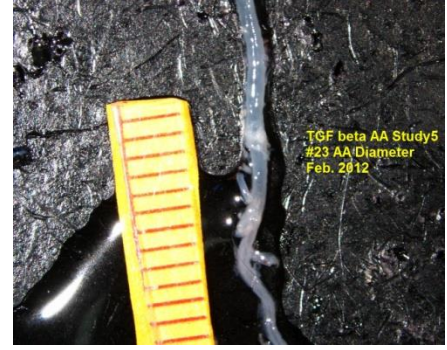
1.37 mm

Study #2: TGF- β mouse IgG
(5 mg/kg, 3 times/week)
AngII-infused (1,000 ng/kg/min)

#21a: Died



2.04 mm



0.82 mm

#24a: Died



0.97 mm



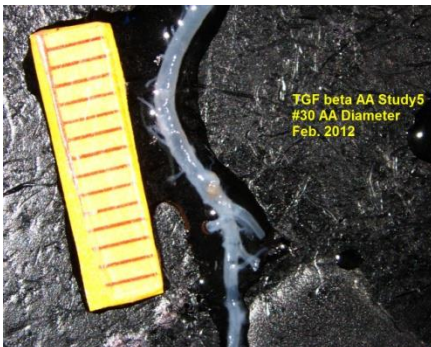
2.26 mm



1.05 mm

#28a: Died

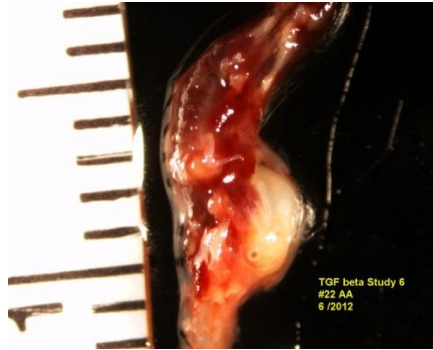
#29a: Died



1.35 mm

Study #2: TGF- β mouse IgG
(5 mg/kg, 3 times/week)
AngII –infused (1,000 ng/kg/min)

#21b: Died



3.63 mm

#23b: Died

#24b: Died

#25b: Died



1.60 mm

#27b: Died

#28b: Died

#29b: Died

#30b: Died