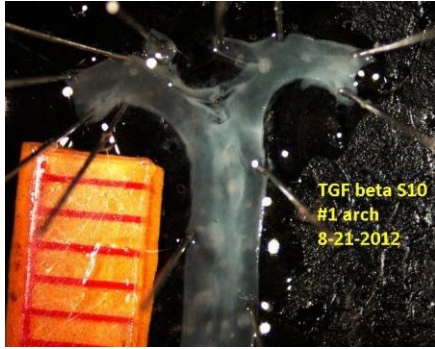
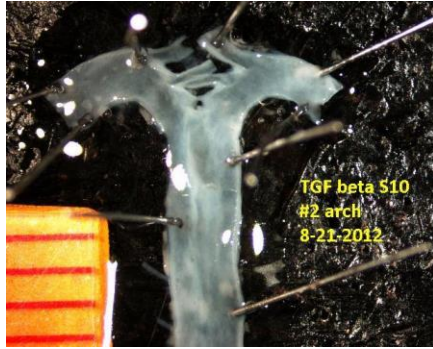


Study #3: Control, isotype-matched IgG
(0.3 mg/kg, 3 times/week)
AngII-infused (1,000 ng/kg/min)



11.6 mm²



10.8 mm²



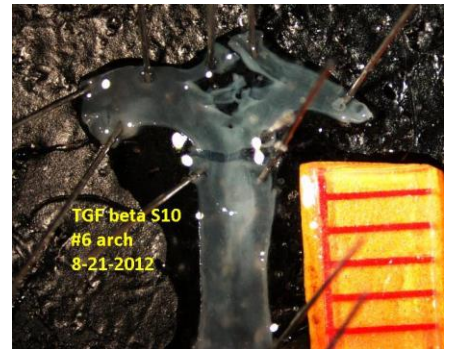
15.5 mm²



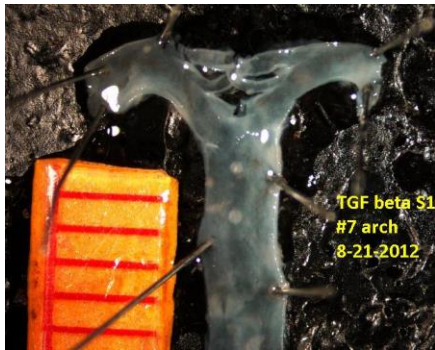
10.1 mm²



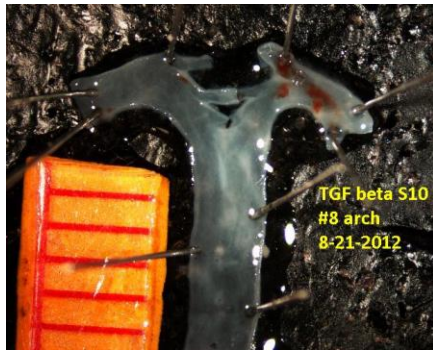
10.3 mm²



11.3 mm²



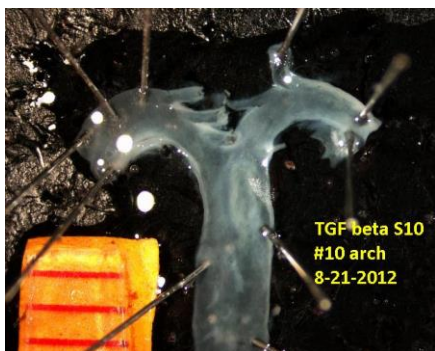
11.0 mm²



11.5 mm²

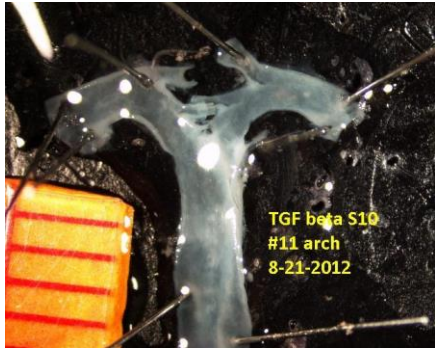


11.4 mm²



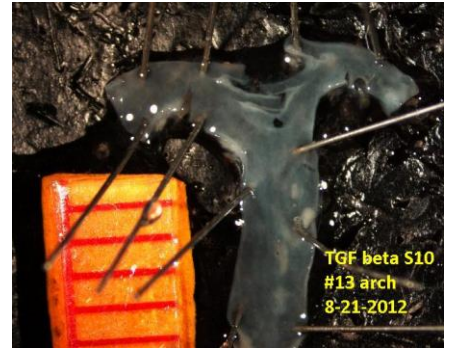
12.2 mm²

Study #3: TGF- β mouse IgG
(0.3 mg/kg, 3 times/week)
AngII-infused (1,000 ng/kg/min)

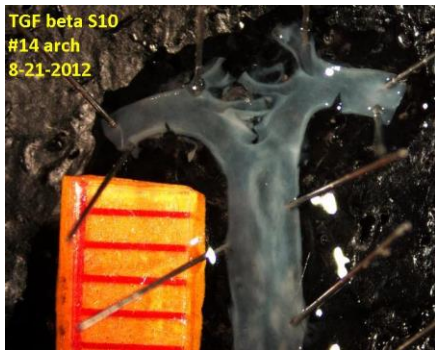


11.6 mm²

#12: Died



12.1 mm²



11.2 mm²



12.0 mm²

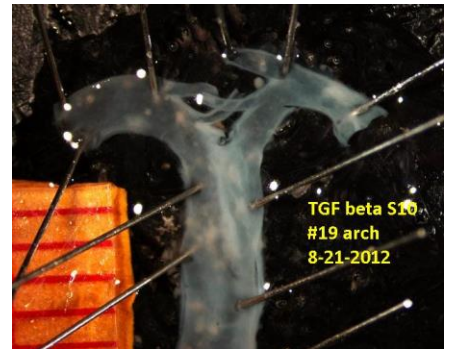


11.8 mm²

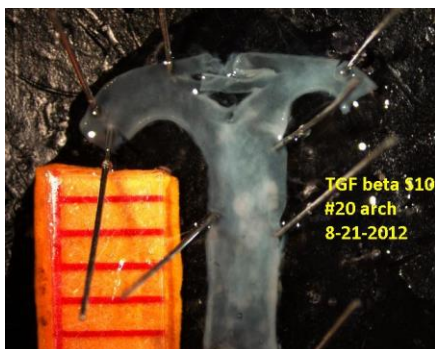
#17: Died



13.1 mm²

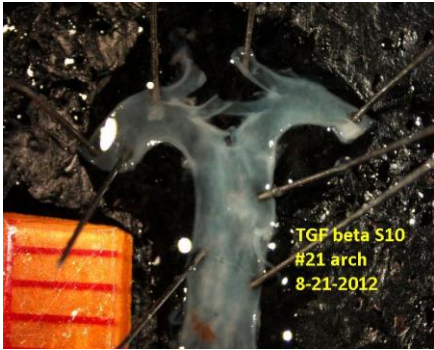


12.5 mm²



10.9 mm²

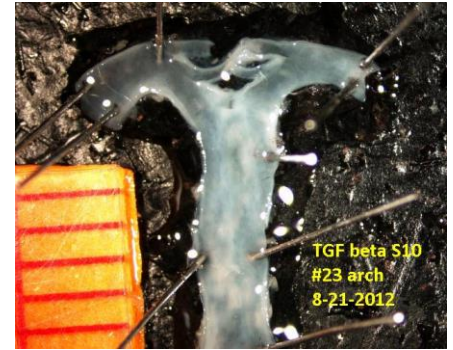
Study #3: Control, isotype-matched IgG
(5 mg/kg, 3 times/week)
AngII-infused (1,000 ng/kg/min)



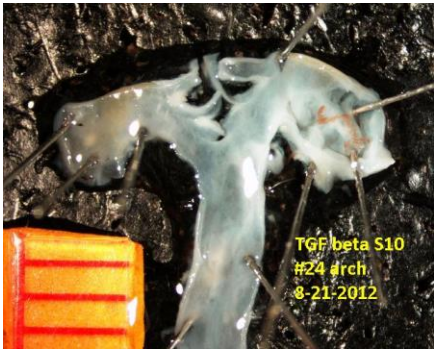
10.3 mm²



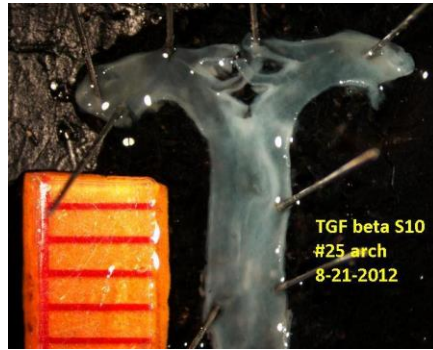
11.2 mm²



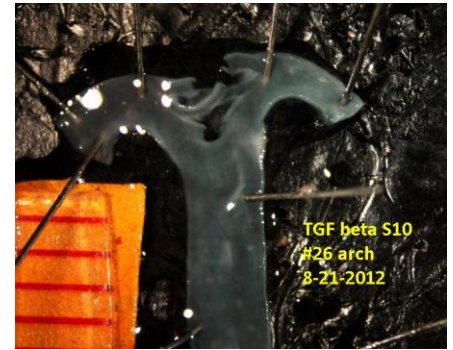
10.9 mm²



22.0 mm²

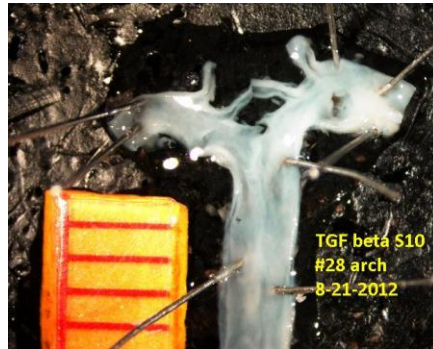


13.7 mm²



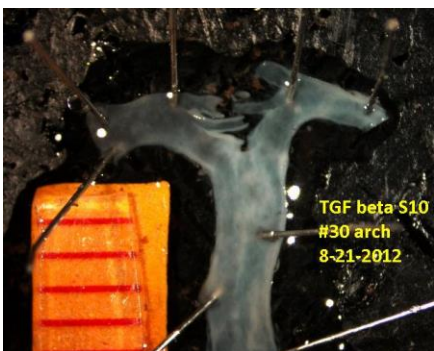
11.8 mm²

#27: Died



12.4 mm²

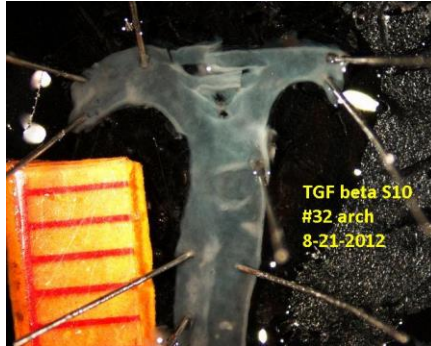
#29: Died



10.3 mm²

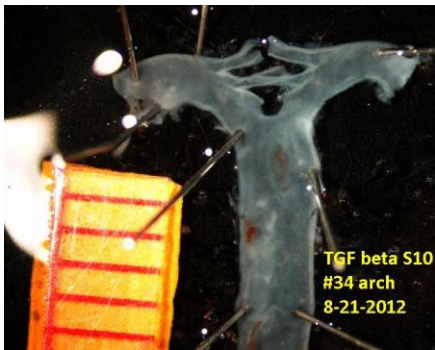
Study #3: TGF- β mouse IgG
(3 mg/kg, 3 times/week)
AngII-infused (1,000 ng/kg/min)

#31: Died



#33: Died

10.5 mm²

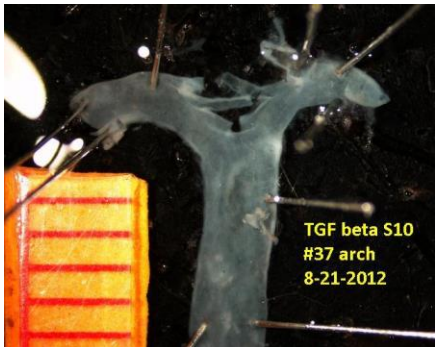


#35:
Not
Available

#36: Died

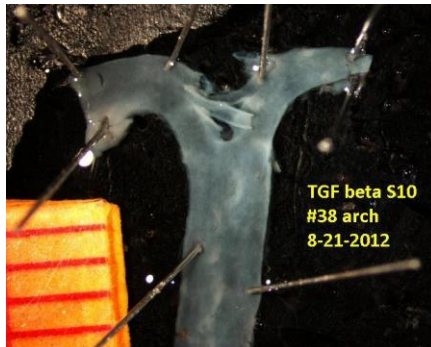
10.8 mm²

10.9 mm²



#39: Died

10.6 mm²



12.8 mm²

#40: Died