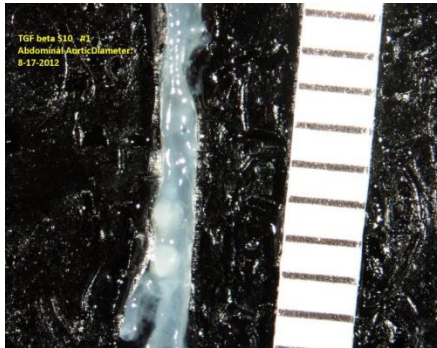
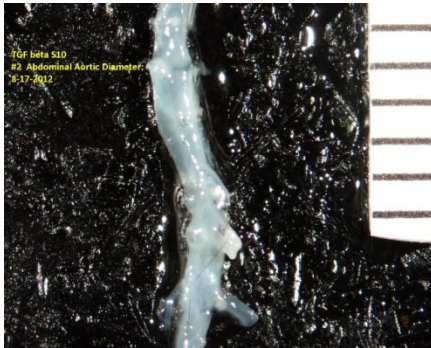


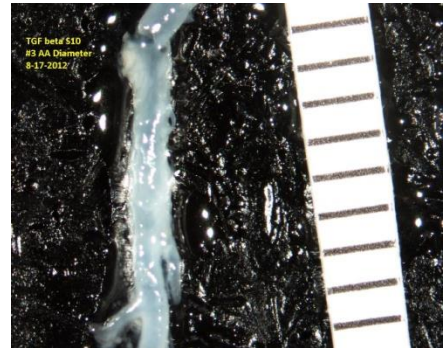
Study #3: Control, isotype-matched IgG
(0.3 mg/kg, 3 times/week)
AngII-infused (1,000 ng/kg/min)



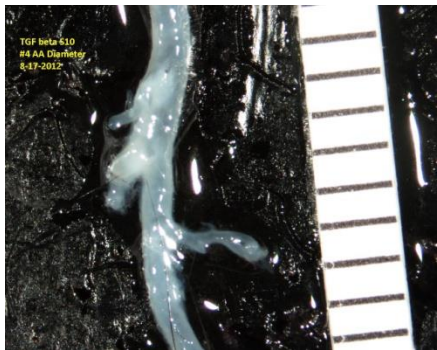
1.07 mm



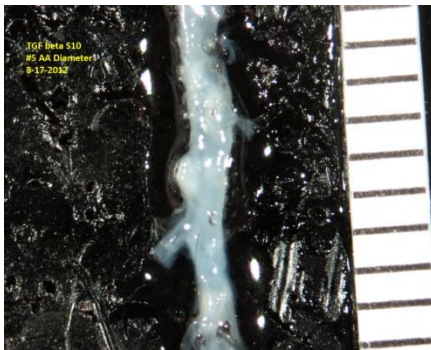
1.06 mm



1.03 mm



1.06 mm



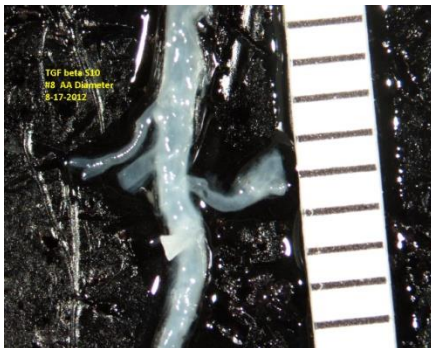
1.21 mm



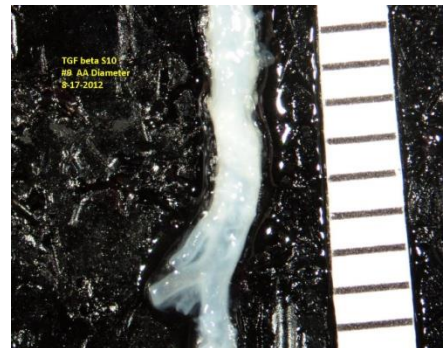
1.07 mm



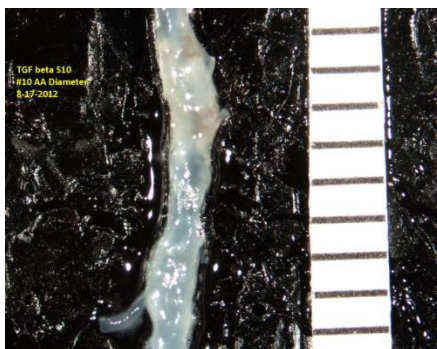
1.08 mm



0.96 mm

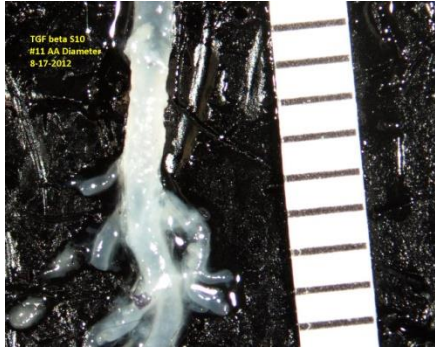


1.19 mm

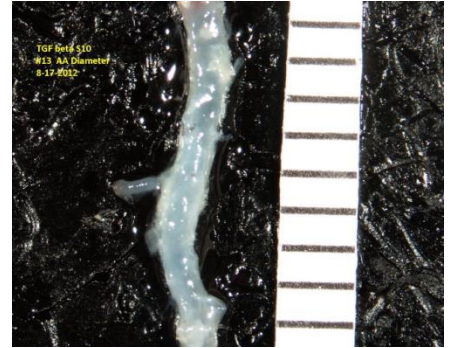


1.35 mm

Study #3: TGF- β mouse IgG
(0.3 mg/kg, 3 times/week)
AngII-infused (1,000 ng/kg/min)

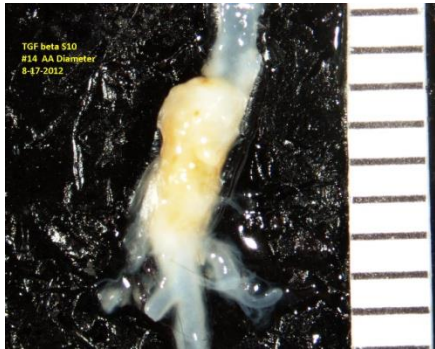


1.08 mm

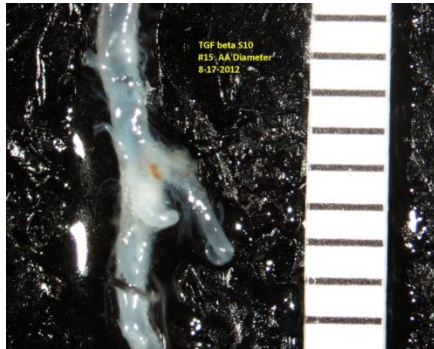


1.05 mm

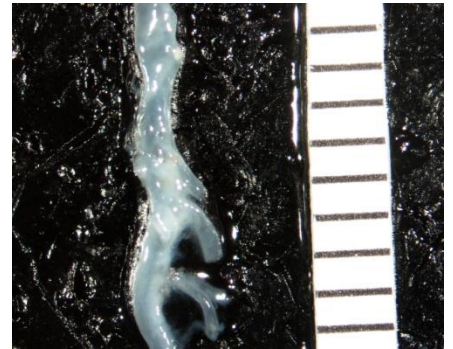
#12: Died



2.13 mm



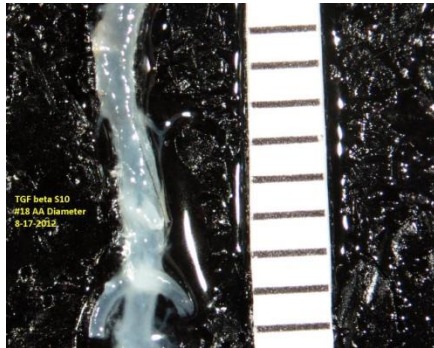
0.98 mm



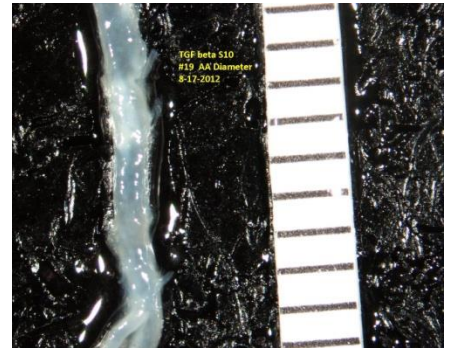
0.98 mm



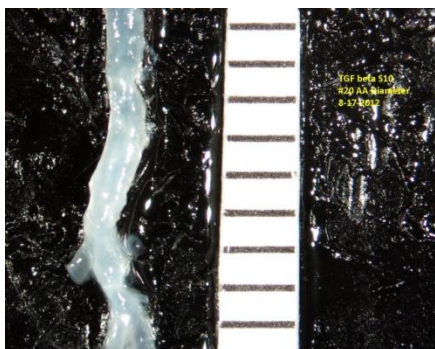
1.03 mm



0.95 mm

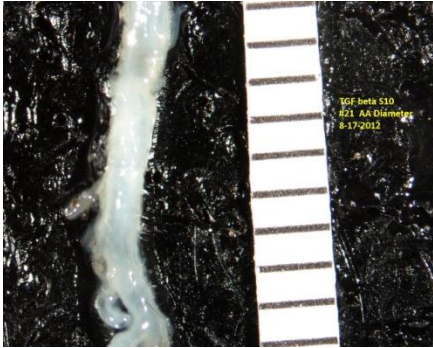


0.93 mm

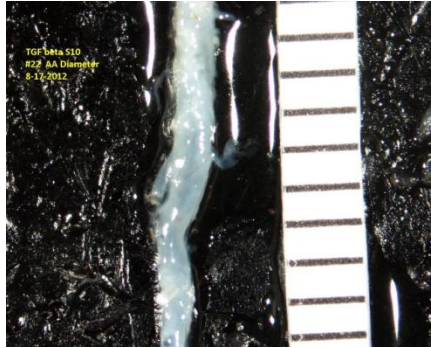


1.05 mm

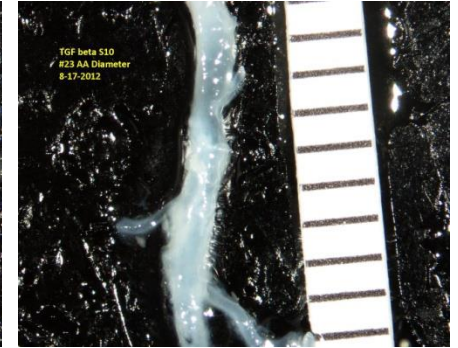
Study #3: Control, isotype-matched IgG
(5 mg/kg, 3 times/week)
AngII-infused (1,000 ng/kg/min)



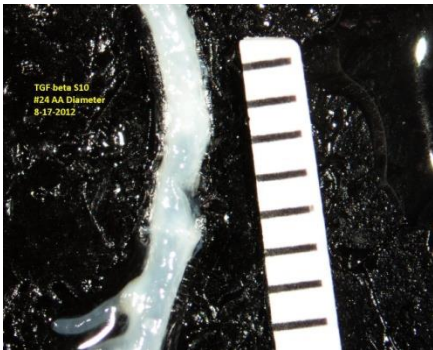
1.20 mm



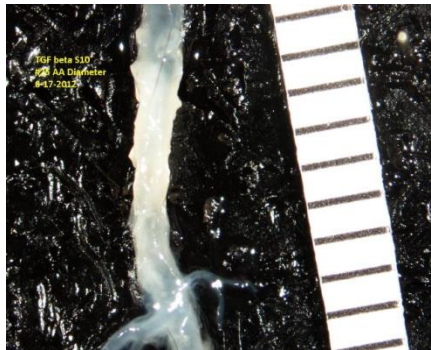
1.05 mm



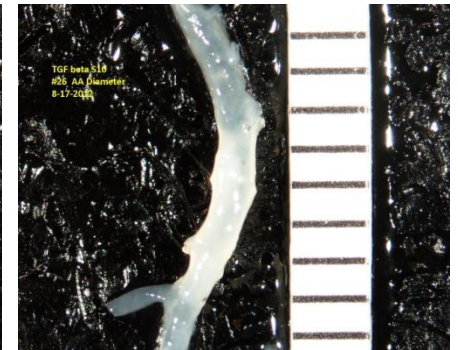
0.96 mm



1.28 mm

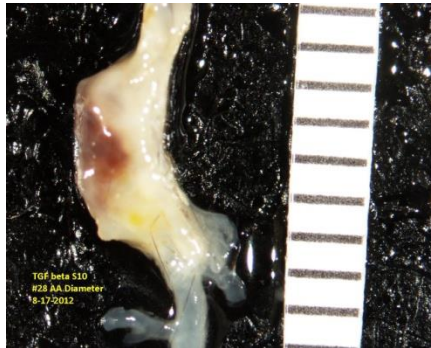


0.98 mm

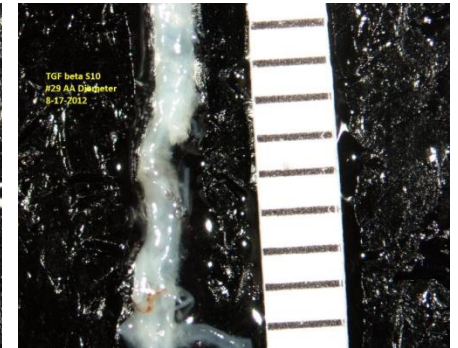


1.02 mm

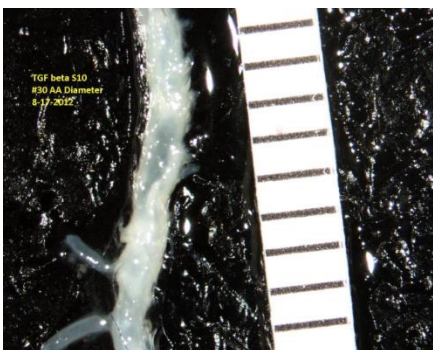
#27: Died



2.51 mm



0.92 mm



1.02 mm

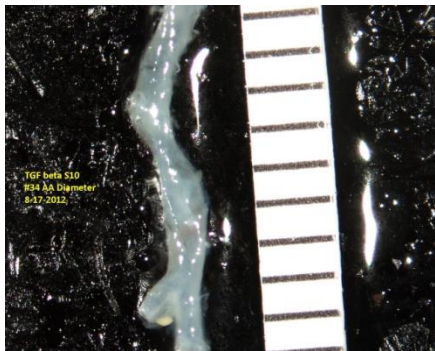
Study #3: TGF- β mouse IgG
(3 mg/kg, 3 times/week)
AngII-infused (1,000 ng/kg/min)

#31: Died

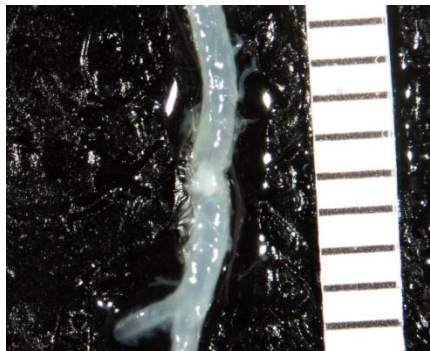


2.29 mm

#33: Died



1.13 mm

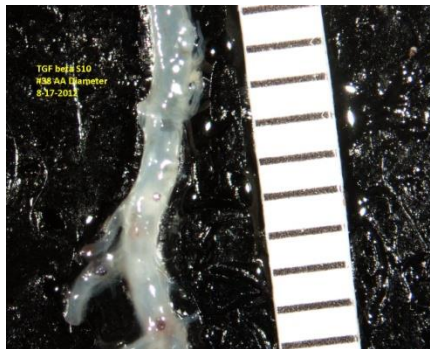


1.06 mm

#36: Died



1.50 mm



1.06 mm

#39: Died

#40: Died