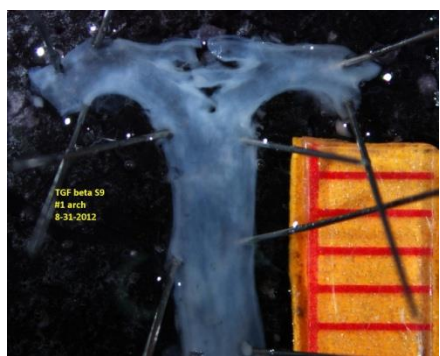
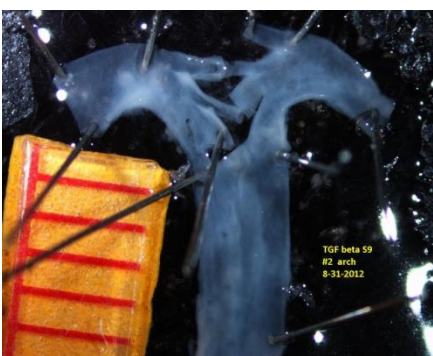


# Study #4: Control, isotype-matched IgG AngII-infusion (1,000 mg/kg/min)



10.7 mm<sup>2</sup>



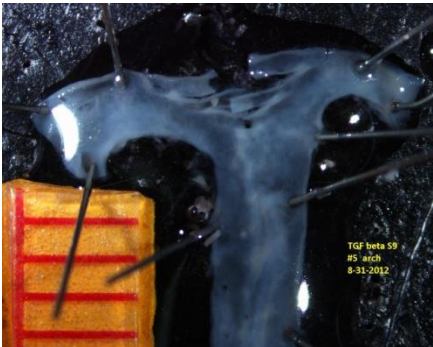
13.0 mm<sup>2</sup>

#3:  
Not  
Available

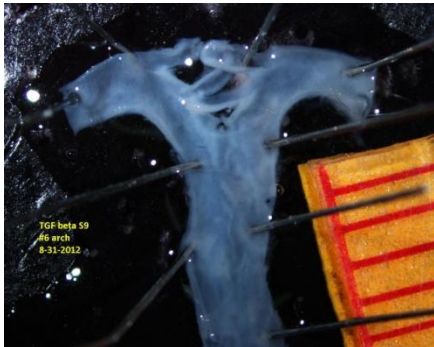
12.3 mm<sup>2</sup>



14.3 mm<sup>2</sup>



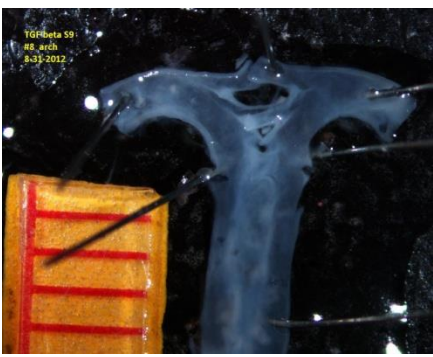
13.9 mm<sup>2</sup>



11.1 mm<sup>2</sup>

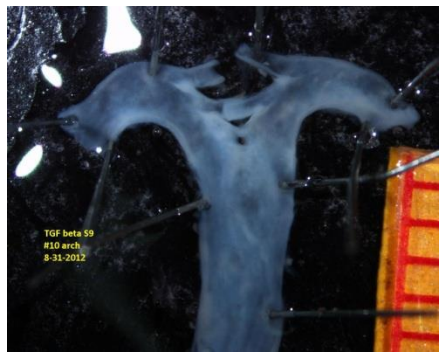


11.2 mm<sup>2</sup>



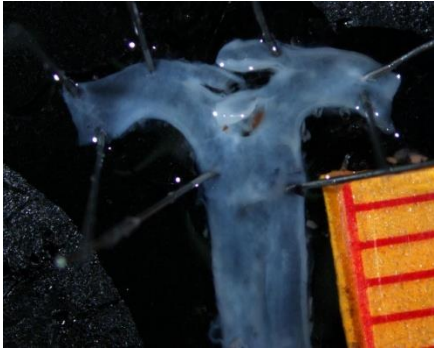
10.1 mm<sup>2</sup>

#9: Died



11.4 mm<sup>2</sup>

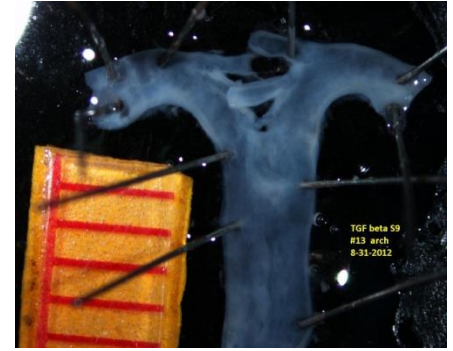
Study #4: TGF- $\beta$  mouse IgG  
AngII-infusion (1,000 mg/kg/min)



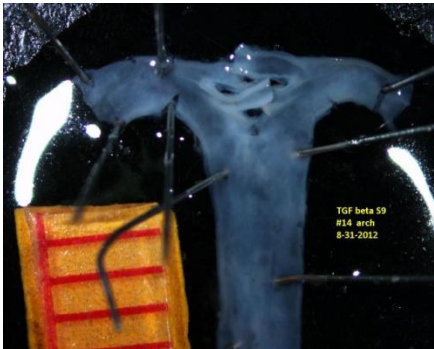
11.8 mm<sup>2</sup>



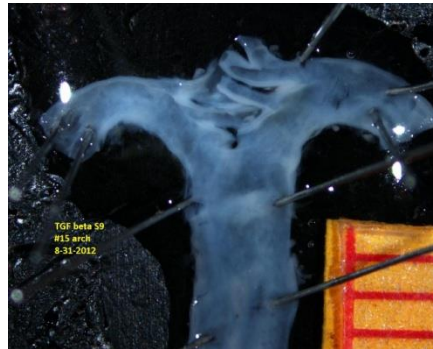
12.3 mm<sup>2</sup>



12.1 mm<sup>2</sup>



11.3 mm<sup>2</sup>

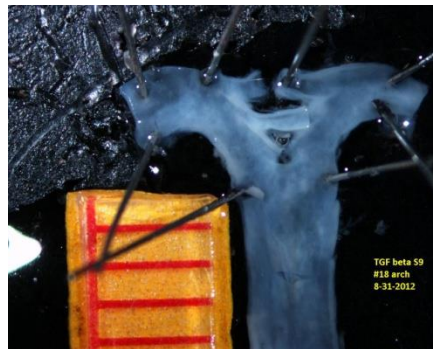


12.9 mm<sup>2</sup>



11.0 mm<sup>2</sup>

#17: Died



11.4 mm<sup>2</sup>

#19: Died



12.4 mm<sup>2</sup>