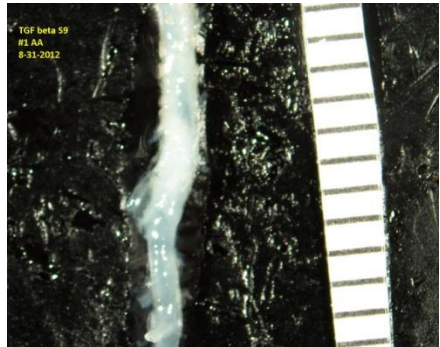
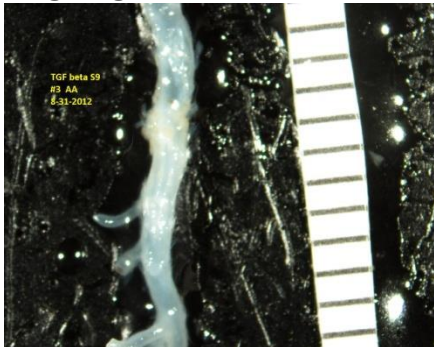


Study #4: Control, isotyped-matched IgG AngII-infusion (1,000 mg/kg/min)

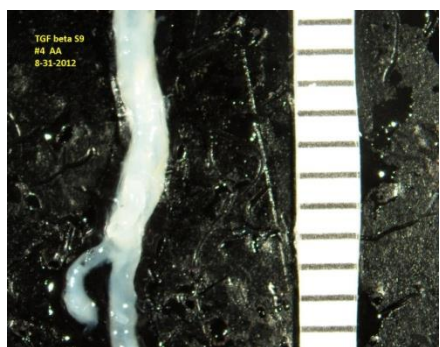
#2:
Not
Available



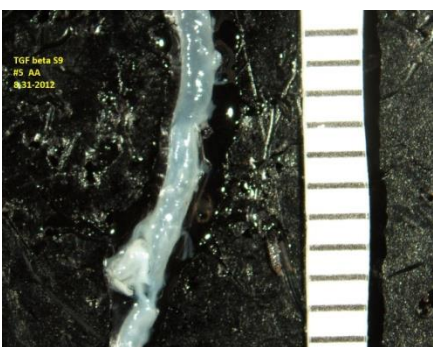
1.24 mm



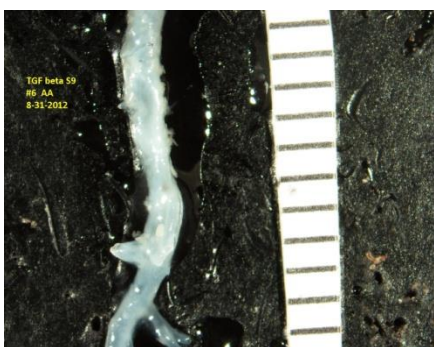
1.11 mm



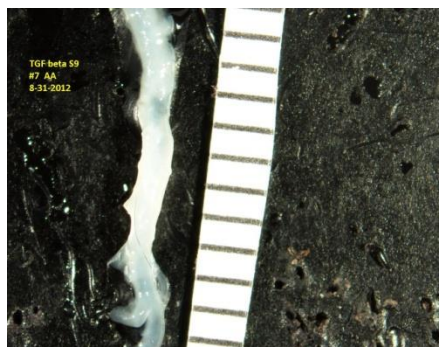
1.16 mm



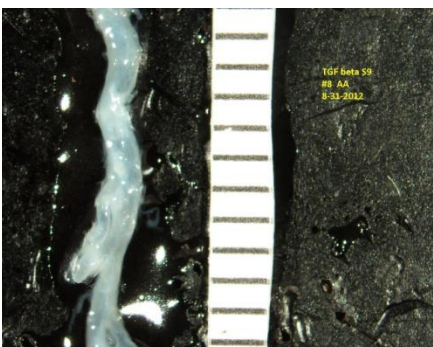
1.13 mm



1.15 mm

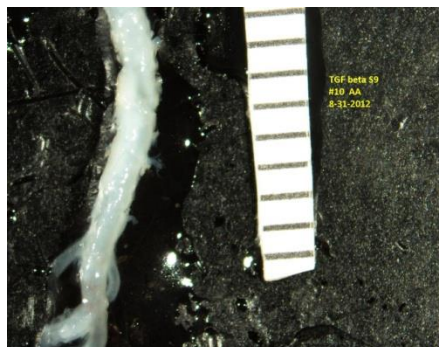


0.88 mm



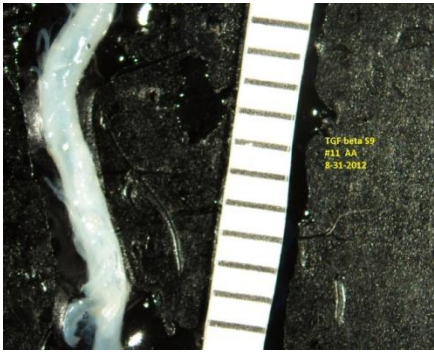
1.10 mm

#9: Died

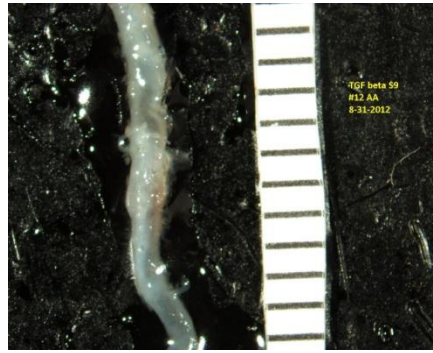


1.19 mm

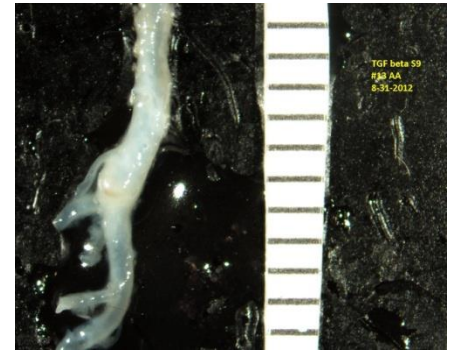
Study #4: TGF- β mouse IgG
AngII-infusion (1,000 mg/kg/min)



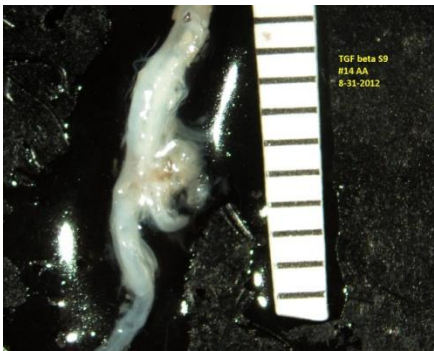
1.19 mm



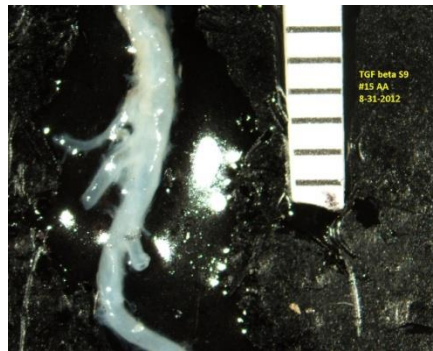
1.36 mm



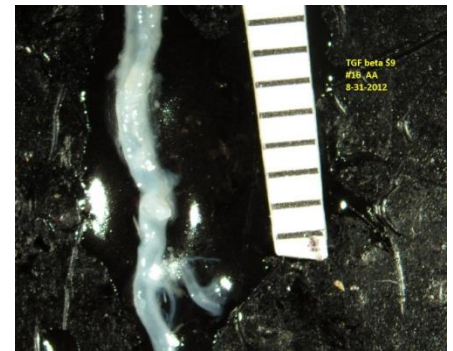
1.54 mm



1.94 mm

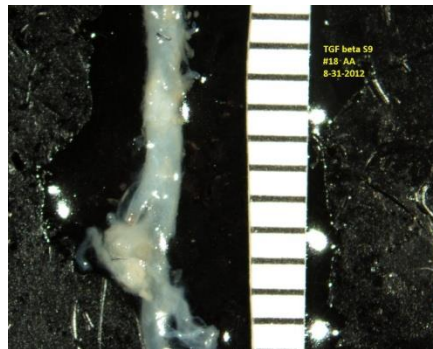


1.12 mm



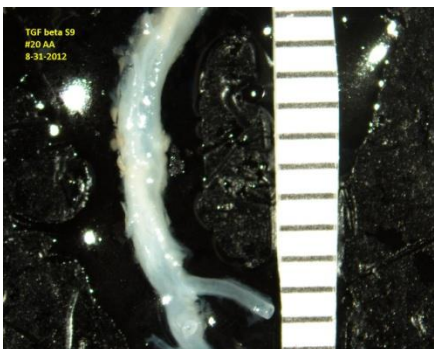
1.06 mm

#17: Died



1.23 mm

#19: Died



1.30 mm