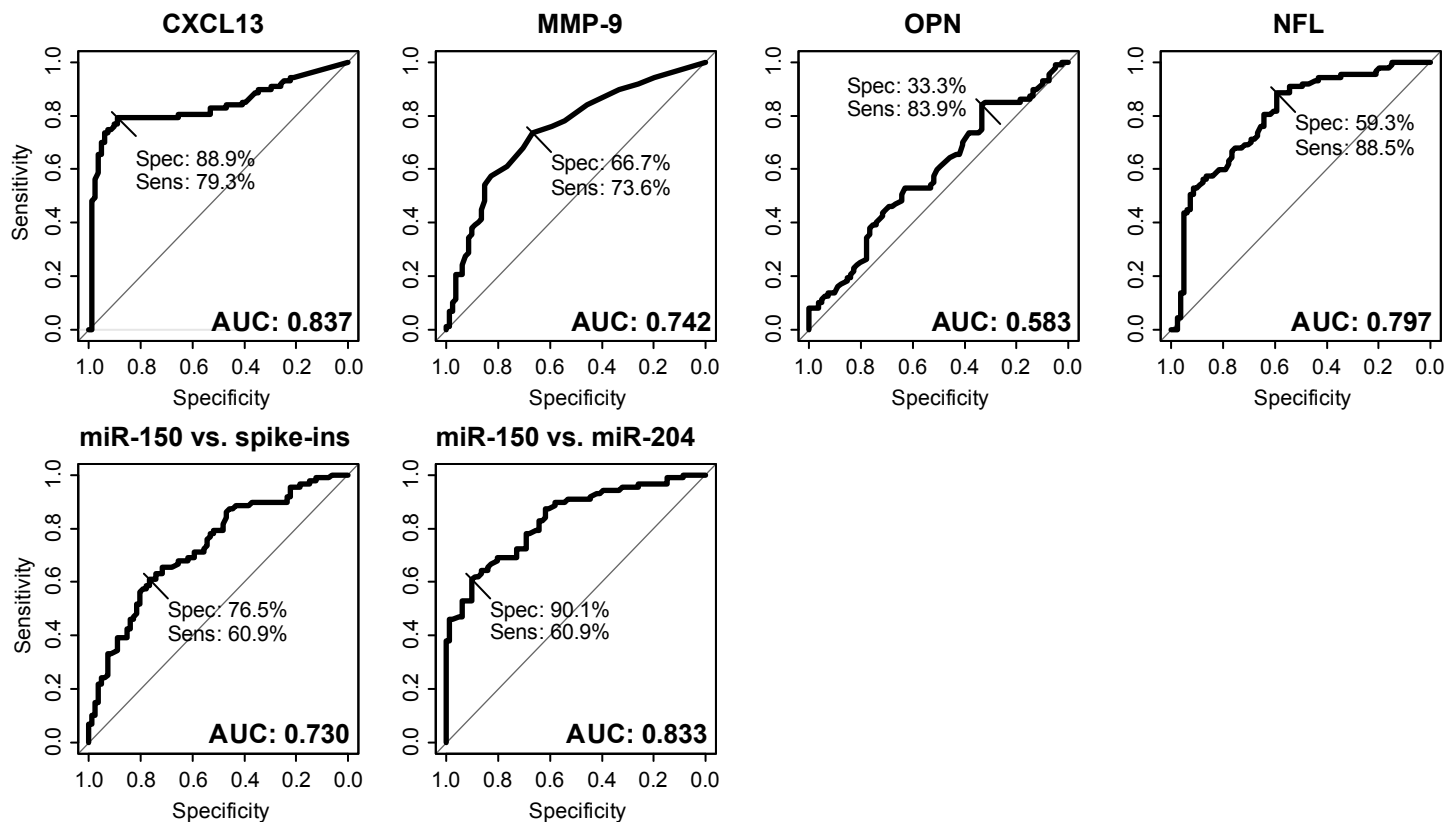
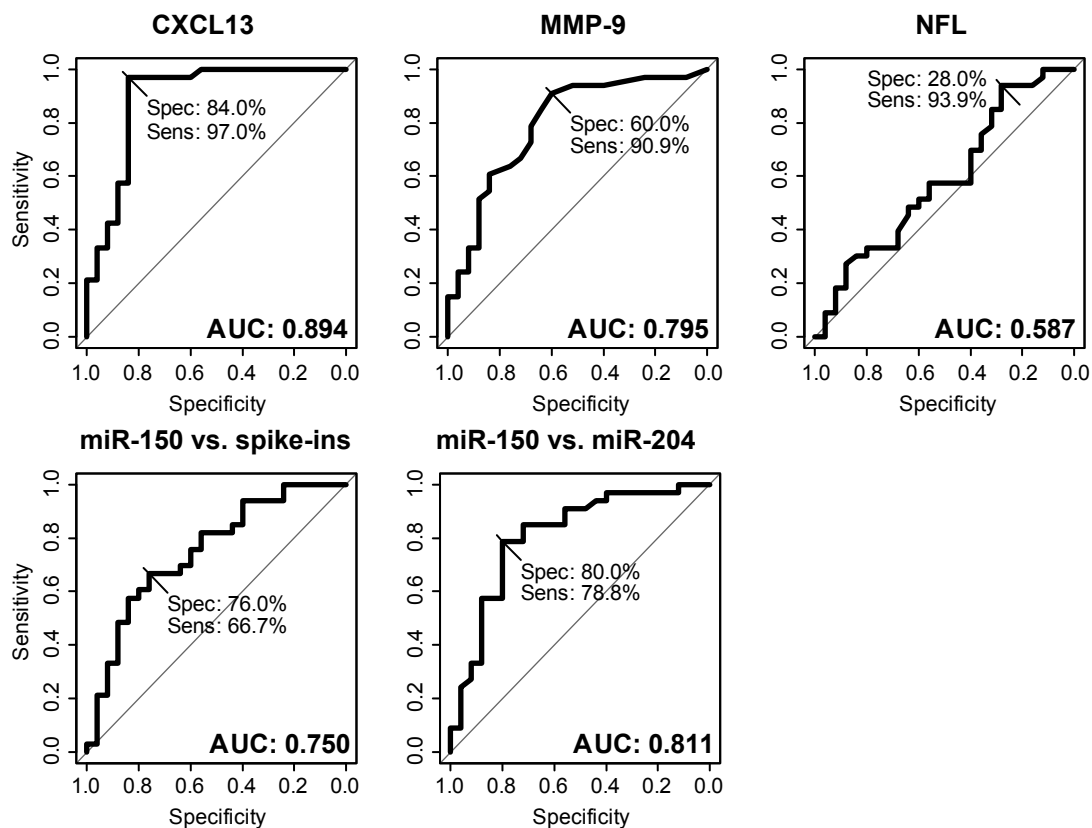


A MS (n=87) vs. NINDC (n=81)



B CIS (n=25) vs. CIS-MS (n=33)



Supplementary figure 2. Receiver operating characteristic (ROC) curve analyses of the candidate biomarkers. ROC curve analyses between a) MS and non-inflammatory neurological disease controls (NINDCs) and b) clinically isolated syndrome (CIS) patients that converted to MS (CIS-MS) and those that never converted (CIS) were performed on a subset of individuals for which measures of all candidate biomarkers were available, CXCL13, MMP-9, OPN, NFL and miR-150. OPN measures were not available for b). NFL and NFL.adj (adjusted for age-related differences) performed equally (data not shown). AUC, area under the curve.