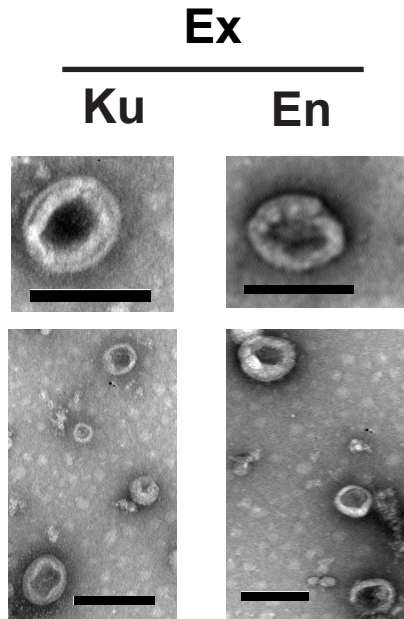
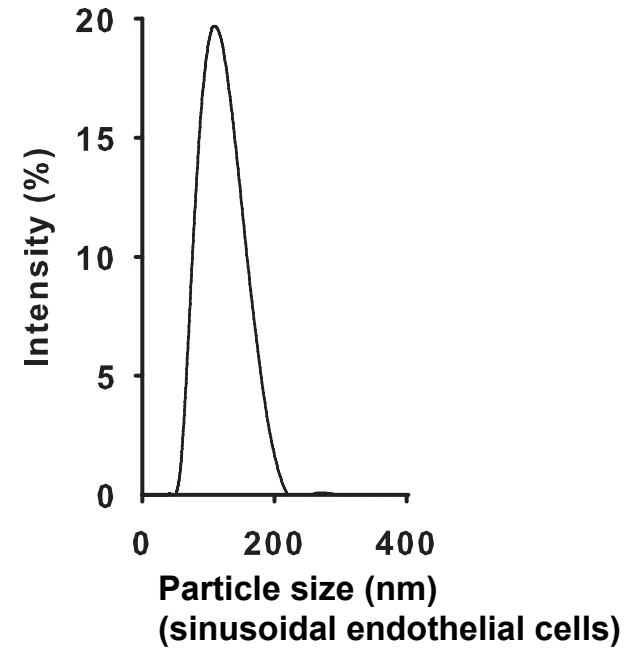
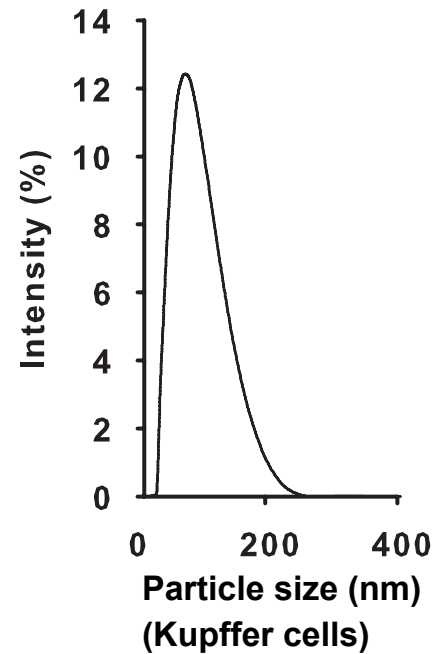


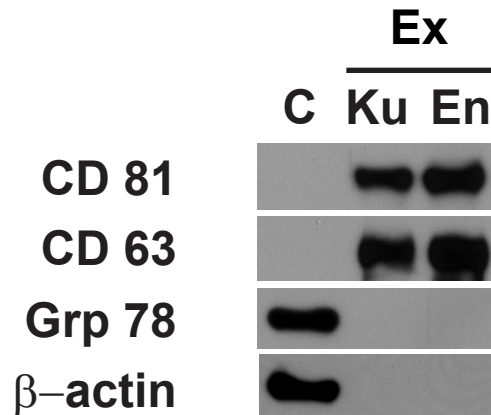
A Electron microscopy



B Zetasizer Nano



C Western blot analysis



Characterization of exosomes secreted by kupffer cells or sinusoidal endothelial cells

(A) Analysis of exosomes from kupffer cells ('Ku') or sinusoidal endothelial cells ('En') by electron microscopy (bars, 100 nm).

(B) Size of exosomes isolated from kupffer cells (mean: 78 nm) or sinusoidal endothelial cells (mean: 99 nm)

(C) Western blot analysis of cell extracts prepared from primary hepatocytes ('C') and exosomes isolated from kupffer cells ('Ku') or sinusoidal endothelial cells ('En') shows expression of CD81, CD63, endoplasmic reticulum (Grp78) and β -actin.