

SUPPLEMENTAL MATERIAL

FIGURE S1 – Flow Chart of the Study Population

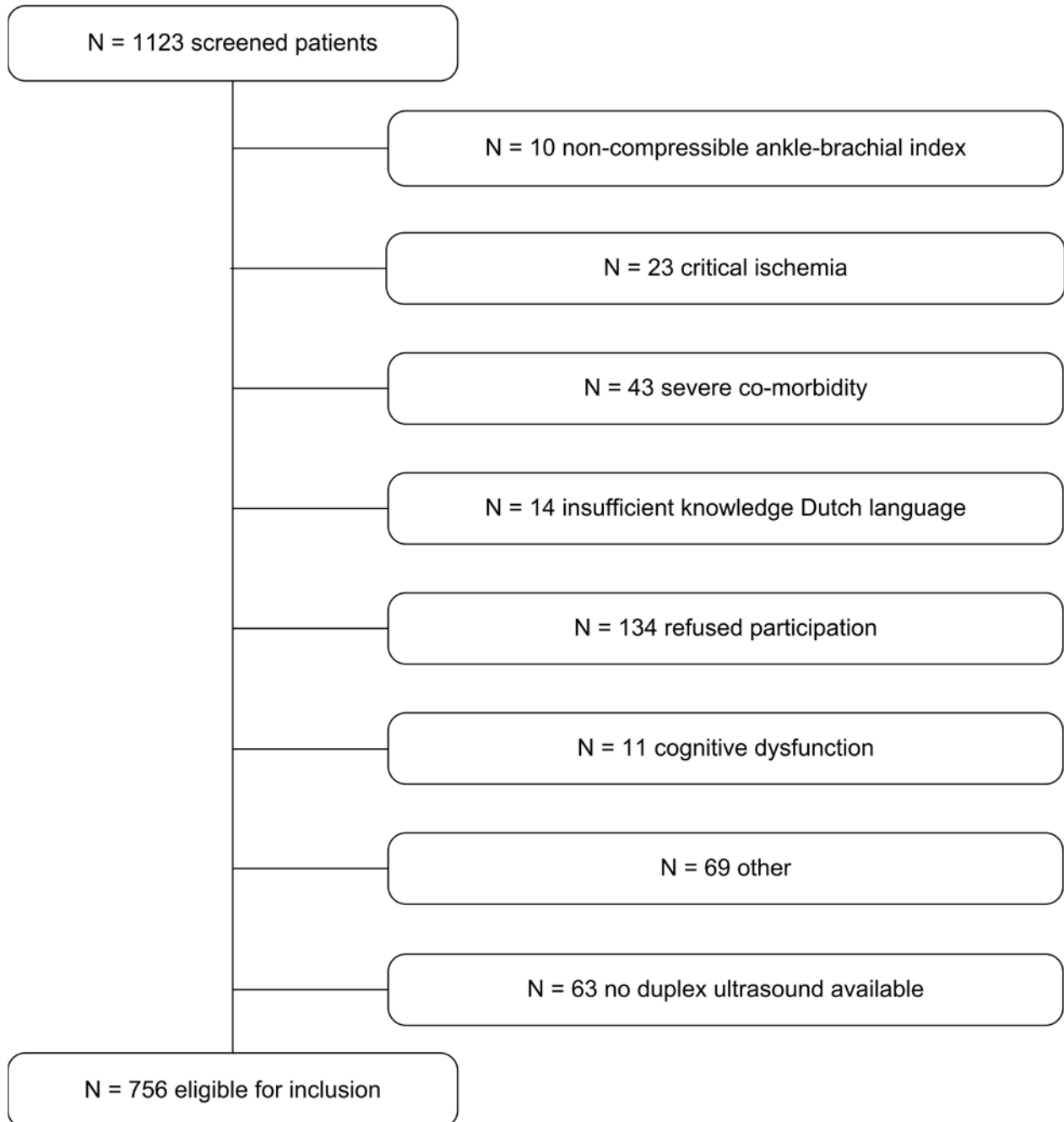


FIGURE S2 – The Mean Cumulative Incidence for Experiencing Multiple Adverse Events by the Number of Lesions during a Median Follow-Up of 3.2-Years. The estimated cumulative incidence curves for 0-1 and 2 lesions were virtually identical, and therefore they are labeled as one curve 0-2 lesions. The p-value for the comparison of 0-2 lesions vs. 3+ lesions was $P=0.001$.

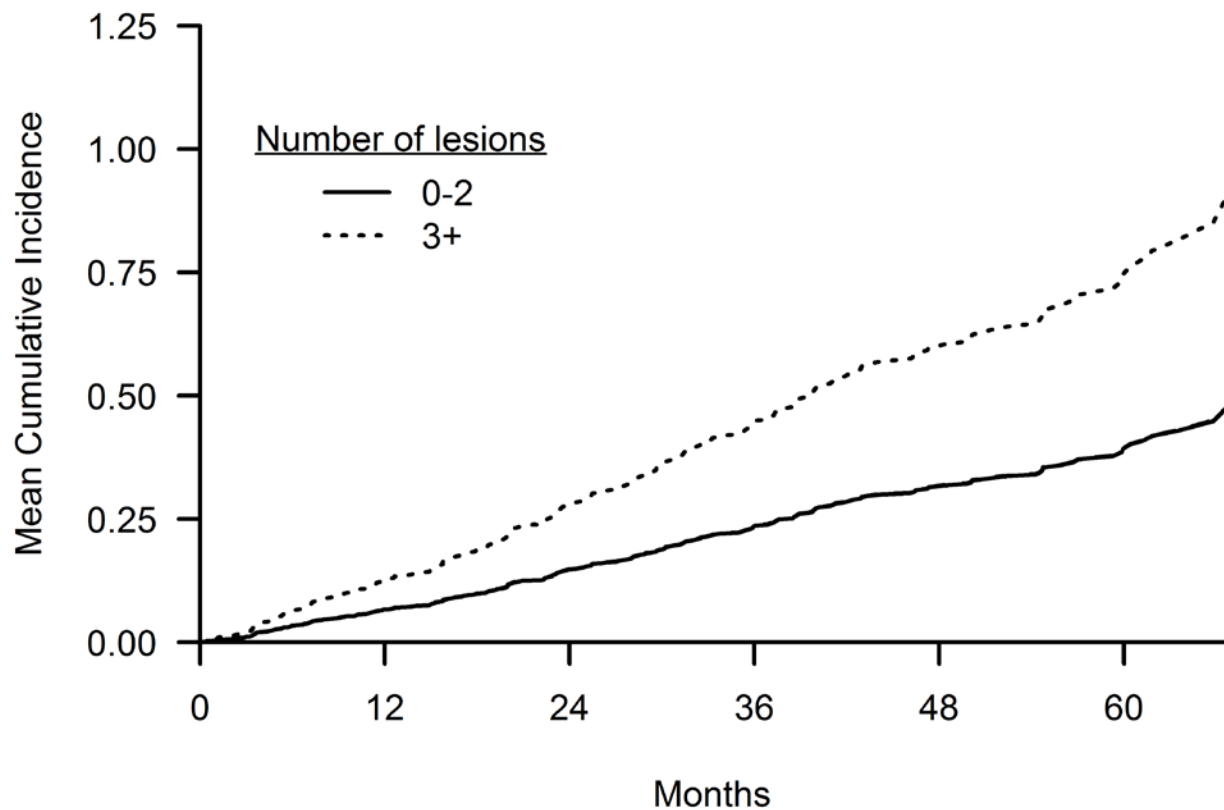


TABLE S1 - The Association between the Number of Lesions and 3.2-Year Multiple Adverse Events Risk.

	Hazard Ratio	95% Confidence Interval	P-value
<hr/>			
Number of lesions			
2 vs. 1	0.92	0.64-1.34	.67
3+ vs. 1	1.53	1.08-2.18	.018
Resting ankle-brachial index (per +10%)	0.92	0.84-1.01	.07
Age (per +10 years)	1.30	1.10-1.54	.003
Female	1.04	0.77-1.39	.82
Body mass index (per +5 kg/m ²)	1.08	0.93-1.26	.32
Prior angina	1.15	0.79-1.68	.46
Prior myocardial infarction	1.47	1.04-2.09	.031
Heart failure	1.76	1.05-2.95	.033
Prior coronary artery bypass graft	1.11	0.74-1.67	.60
Prior percutaneous coronary intervention	1.32	0.86-2.03	.20
Prior stroke	1.25	0.74-2.09	.40
Prior transient ischemic attack	0.58	0.34-1.00	.05
Chronic obstructive pulmonary disease	1.80	1.30-2.51	<.001
Hypertension	1.07	0.78-1.49	.67
Dyslipidemia	1.24	0.89-1.72	.20
Diabetes mellitus	1.14	0.83-1.58	.42

	Hazard	95%	P-value
	Ratio	Confidence	
		Interval	
<i>Table S1 (continued)</i>			
Renal dysfunction	1.09	0.70-1.67	.71
Smoking	1.45	1.06-1.98	.020
Total cholesterol (per +50 mg/dL)	0.88	0.73-1.07	.19
High-density lipoprotein cholesterol (per +10 mg/dL)	1.08	0.97-1.21	.16
Systolic blood pressure (per +10 mmHg)	1.01	0.95-1.08	.72
Proximal lesion	0.79	0.58-1.10	.16

Abbreviations: kg=kilogram, m²=square meters, mg/dL=milligrams per deciliter, mmHg=millimeters of mercury.